

GENERAL NOTES

Plan dimensions and details relative to existing plans are subject to nominal construction variations. The Contractor shall field verify existing dimensions and details affecting new construction and make necessary approved adjustments prior to construction or ordering of materials. Such variations shall not be cause for additional compensation for a change in scope of the work, however, the Contractor will be paid for the quantity actually furnished at the unit price bid for the work.

In addition to the requirements of article 107.16 the contractor shall protect the surface of all bridge decks and bridge approach pavements in a manner satisfactory to the engineer before any equipment is allowed to cross the structure. Protection shall be provided for all equipment as defined in article 101.16 regardless if track mounted or wheeled.

Prior to pouring the new concrete deck, all heavy or loose rust, loose mill scale, and other loose or potentially detrimental foreign material shall be removed from the surfaces in contact with concrete. Tightly adhered paint may remain unless otherwise noted. Removal shall be accomplished by methods that will not damage the steel and the cost will be included in the pay item covering removal of the existing concrete.

The cost of any saw cuts made to complete the work as described in plan details shall not be paid for separately but shall be included in the various pay items involved.

Protective coat shall be applied to all new concrete surfaces on concrete overlay and at joints. Seasonal limits for application shall not apply.

Synthetic Fibers shall be added to the Bridge Deck Microsilica Concrete Overlay, see Special Provisions. The cost of Synthetic Fibers shall be included in the cost of Bridge Deck Microsilica Concrete Overlay.

Reinforcement bars designated (E) shall be epoxy coated.

Joint openings shall be adjusted according to Article 520.04 of the Standard Specifications when the deck is poured at an ambient temperature other than 50°F.

Existing reinforcement bars extending into the removal area shall be cleaned, straightened, and incorporated into the new construction. Any reinforcement bars that are damaged during concrete removal shall be replaced with an approved bar splicer or anchorage system. Cost included with Concrete Removal.

All structural steel shall conform to AASHTO Classification M-270 Gr. 36, unless otherwise noted.

Existing structural steel that will be in contact with new structural steel shall be cleaned and painted prior to erection as required by the Special Provision "Cleaning and Painting Contact Surface Areas of Existing Steel Structures".

The existing structural steel coating contains lead. The Contractor shall take appropriate precautions to deal with the presence of lead on this project.

All new structural steel and bearing assembly shall be hot-dip galvanized. See Special Provisions for "Hot Dip Galvanizing For Structural Steel."

TOTAL BILL OF MATERIAL

	UNIT	QUANTITY
Bituminous Materials (Tack Coat)	Pound	104
PCC Surface Removal - Butt Joint	Sq. Yd.	202
Hot-Mix Asphalt Surface Course, IL-9.5, Mix "C", N70	Ton	23
* Protective Coat	Sq. Yd.	850
Concrete Removal	Cu. Yd.	9.6
Concrete Superstructure	Cu. Yd.	10.6
Bridge Deck Grooving	Sq. Yd.	802
Furnishing and Erecting Structural Steel	Pound	1820
Stud Shear Connectors	Each	24
Reinforcement Bars, Epoxy Coated	Pound	1360
Preformed Joint Strip Seal	Foot	73
Elastomeric Bearing Assembly, Type I	Each	12
Anchor Bolts, 1"	Each	24
Paint Pavement Marking - Line 4"	Foot	730
Approach Slab repair (Partial Depth)	Sq. Yd.	4
Jack and Remove Existing Bearings	Each	12
Bridge Deck Scarification, 3/4"	Sq. Yd.	802
Bridge Deck Microsilica Concrete Overlay, 2 1/2"	Sq. Yd.	802
Plug Existing Deck Drains	Each	10
Protective Shield	Sq. Yd.	517

* On new concrete surfaces only

BRIDGE REPAIRS

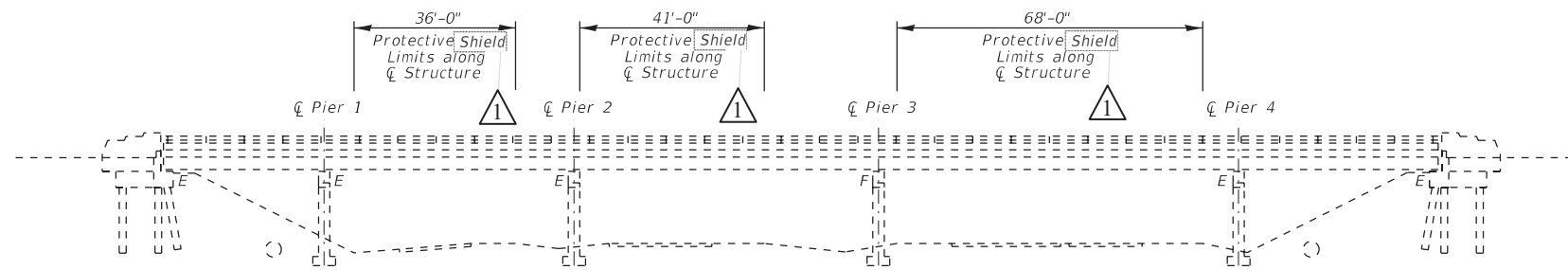
WEBSTER ST. OVER I-57

F.A.I. RTE 57 - D9 BRIDGE OVERLAY 2023-4

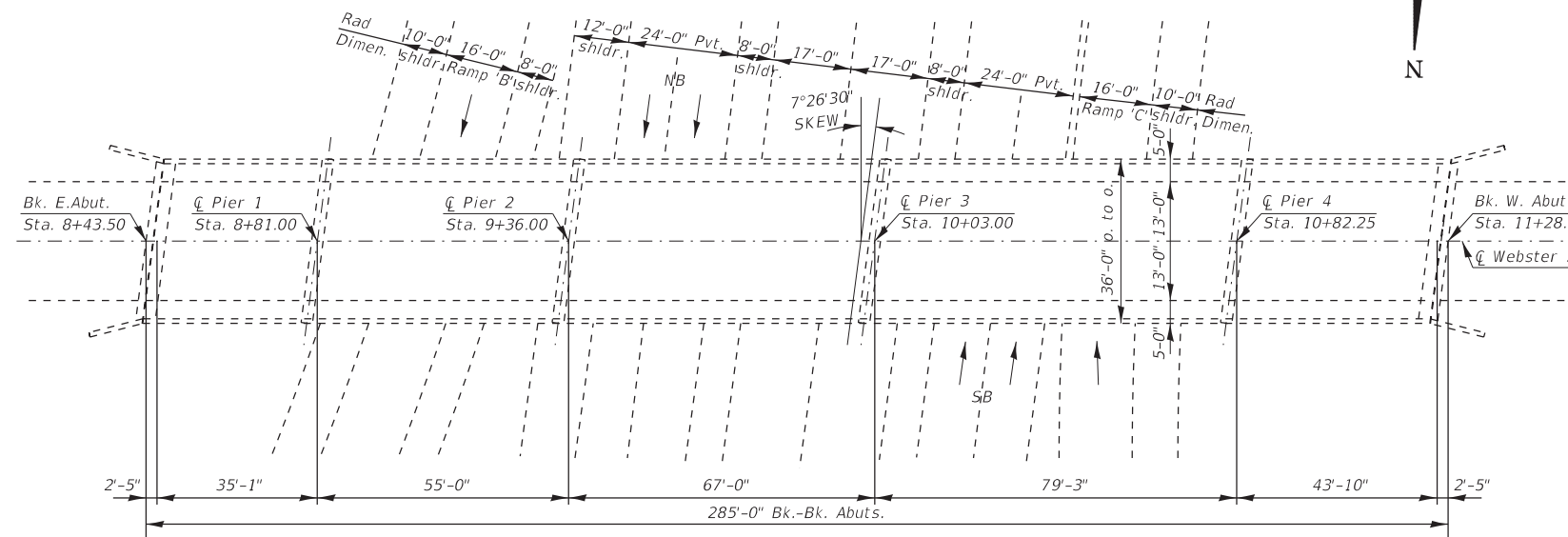
FRANKLIN COUNTY

STRUCTURE NO. 028-0063

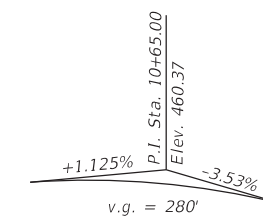
REVISION 11-10-2022



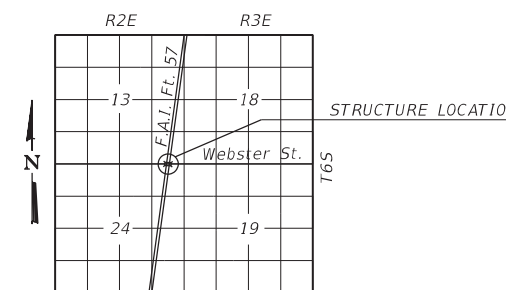
ELEVATION



PLAN



PROFILE WEBSTER ST.



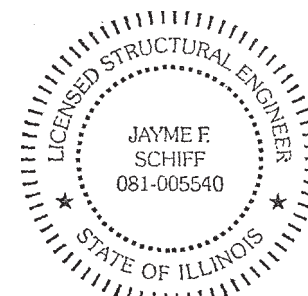
LOCATION MAP

DESIGN STRESSES

(From Existing Plans)
 $f'_c = 1,400$ psi Super & Sub.
 $vc = 75$ psi. Ftgs. & Wingwalls
 $f_s = 20,000$ psi Reinf.
 $f_s = 20,000$ psi. Struct. (A-36)
 $n=10$

SCOPE OF WORK

1. Set up traffic control B.L.R. 21-9 (Construction to be done under Road Closure)
2. Perform full depth joint reconstruction with strip seals at abutments.
3. Install microsilica concrete overlay using 3/4" scarification; 2 1/2" overlay.
4. Replace bearings at the abutments.
5. Perform approach slab repair.



EXPIRES 11-30-2022

Jayme F. Schiff

**STATE OF ILLINOIS
DEPARTMENT OF TRANSPORTATION**

GENERAL PLAN & ELEVATION

SCALE: _____ SHEET _____ OF _____ SHEETS STA. _____ TO STA. _____

F.A.I. RTE.	SECTION	COUNTY	TOTAL SHEETS	SHEET NO.
57	*	FRANKLIN	24	7
CONTRACT NO. 78930				
ILLINOIS FED. AID PROJECT				

*D9 Bridge Overlay 2023-4

MOE:J:Defaul FILE: \\mde:pw_bentley.com:PHWDOT\Documents\DOT Offices\Dir\frt_9\Projects\78930\CADD\Drawings\078930_Sheets.dgn