

6-00390-0000

6-00391-0000

CODE NO.	ITEM	UNIT	URBAN TOTAL QUANTITY	CONSTRUCTION CODE		
				STP FUNDING 100% FED		
				BOX CULVERT 0010 S.N. 059-2513	BOX CULVERT 0010 S.N. 059-2509	REALIGNMENT 0004 S.N. 059-7039
44000100	PAVEMENT REMOVAL	SQ YD	380	216	164	0
44004250	PAVED SHOULDER REMOVAL	SQ YD	1005	578	427	0
48203023	HOT-MIX ASPHALT SHOULDERS, 6 1/2"	SQ YD	1925	573	1352	0
48203100	HOT-MIX ASPHALT SHOULDERS	TON	397	195	202	0
50100300	REMOVAL OF EXISTING STRUCTURES NO. 1	EACH	1	1	0	0
50100400	REMOVAL OF EXISTING STRUCTURES NO. 2	EACH	1	0	1	0
50104400	CONCRETE HEADWALL REMOVAL	EACH	11	3	2	6
50105220	PIPE CULVERT REMOVAL	FOOT	296	35	142	119
50800105	REINFORCEMENT BARS	POUND	54.2	54.2	0	0
50800205	REINFORCEMENT BARS, EPOXY COATED	POUND	98700	28380	70320	0
50800515	BAR SPLICERS	EACH	128		128	
51500100	NAME PLATES	EACH	2	1	1	0
52200020	TEMPORARY SOIL RETENTION SYSTEM	SQ FT	838	771	67	0
52200600	GEOTEXTILE RETAINING WALL	SQ FT	380	380	0	0
54001003	BOX CULVERT END SECTIONS, CULVERT NO. 3	EACH	1	1	0	0



⚠ REVISED 11-9-2022

REV. - MS

REV-SEP

MODEL: Default
 FILE: \\nas01c.pw.bentley.com\PWDOT\Documents\DOT_Offices\Hardt, E\Projects\0672864\CADD\Drawn_Sht_0590001\CADD\Drawn_Sht_0672864-4-500.dgn

USER NAME = cancels	DESIGNED -	REVISED -
	DRAWN -	REVISED -
PLOT SCALE = 100.0000' / in.	CHECKED -	REVISED -
PLOT DATE = 8/19/2021	DATE -	REVISED -

**STATE OF ILLINOIS
DEPARTMENT OF TRANSPORTATION**

SUMMARY OF QUANTITIES

SCALE: SHEET OF SHEETS STA. TO STA.

F.A.P. RTE.	SECTION	COUNTY	TOTAL SHEETS	SHEET NO.
325	(114,116)B-2,3,4	MACOUPIN	194	5
CONTRACT NO. 72B64			ILLINOIS FED. AID PROJECT	

6-00390-0000

6-00391-0000

CODE NO.	ITEM	UNIT	URBAN TOTAL QUANTITY	CONSTRUCTION CODE		
				STP FUNDING 100% FED		
				BOX CULVERT 0010 S.N. 059-2513	BOX CULVERT 0010 S.N. 059-2509	REALIGNMENT 0004 S.N. 059-7039
* 78001120	PAINT PAVEMENT MARKING - LINE 5"	FOOT	7462	2700	4762	0
* 78100100	RAISED REFLECTIVE PAVEMENT MARKER	EACH	38	16	22	0
* 78200005	GUARDRAIL REFLECTORS, TYPE A	EACH	8	0	0	8
78300200	RAISED REFLECTIVE PAVEMENT MARKER REMOVAL	EACH	38	16	22	0
78300201	PAVEMENT MARKING REMOVAL - GRINDING	SQ FT	439	216	223	
X0324744	REMOVAL OF EXISTING PRECAST CONCRETE UNITS	SQ FT	748	449	299	0
X4401198	HOT-MIX ASPHALT SURFACE REMOVAL, VARIABLE DEPTH	SQ YD	9344	4154	5190	0
Z0001900	ASBESTOS BEARING PAD REMOVAL	EACH	44	22	22	0
Z0002900	BASE COURSE (OPTION)	SQ YD	2252	1314	938	
Ø Z0076600	TRAINEES	HOUR	1500	1500		0
Z0023602	GRANULAR CULVERT BACKFILL	CU YD	2484	1462	1022	0
Ø Z0076604	TRAINEES TRAINING PROGRAM GRADUATE	HOUR	1500	1500		
Z0065796	RIPRAP SLURRY	SQ YD	6300	3997	1219	1084

* SPECIALTY ITEM

Ø 0042

△ REVISED 11-9-2022

REV. - MS

REV-SEP

MODEL: Default
FILE: \\nas01c-pw-bentley.com\PWDOT\Documents\DOT_Offices\DH\dte_6\Projects\0672864\CADD\Drawn_Sht_0390001\CADD\Drawn_Sht_0644-ht-500.dgn

USER NAME = cancels	DESIGNED -	REVISED -	STATE OF ILLINOIS DEPARTMENT OF TRANSPORTATION	SUMMARY OF QUANTITIES				F.A.P. RTE.	SECTION	COUNTY	TOTAL SHEETS	SHEET NO.	
DRAWN -	REVISOR -	REVISOR -		SCALE:	SHEET	OF	SHEETS	STA.	TO STA.	(114,116)B-2,3,4	MACOUPIN	194	8
PLOT SCALE = 100,0000 ' / in.	CHECKED -	REVISOR -		CONTRACT NO. 72B64									
PLOT DATE = 8/19/2021	DATE -	REVISOR -		ILLINOIS FED. AID PROJECT									

SHOULDER IMPROVEMENT SCHEDULE

PAY ITEM NUMBER		44004250	Z0002900	X4401198	48203023	48203100	48203100	40600290	64200108	
LOCATION	STATION TO STATION	PROPOSED LENGTH (FT)	PAVED SHOULDER REMOVAL (SQ YD)	BASE CSE (OPTION) 10.75" (SQ YD)	HOT-MIX ASPHALT SURF. REM., VARIABLE DEPTH (SQ YD)	HOT-MIX ASPHALT SHOULDERS, 6.5" (SQ YD)	HOT-MIX ASPHALT SHOULDERS, 1.5" (TON)	HOT-MIX ASPHALT SHOULDERS, 2.75" (TON)	BITUMINOUS MATERIALS (TACK COAT) (POUND)	SHOULDER RUMBLE STRIPS, 8" (FT)
SN 059-2513										
EASTBOUND										
	STA. 622+00.00 TO STA. 626+37.00	437.00				194	16		44	437
	STA. 626+37.00 TO STA. 633+00.00	663.00		737	737			113	166	333
	STA. 633+00.00 TO STA. 634+00.00	100.00				44	4		10	100
	STA. 627+33.26 TO STA. 629+18.88	185.62	124							
	STA. 629+69.05 TO STA. 631+82.87	213.82	190							
SUB-TOTAL			314	737	737	239	20	113	219	870
WESTBOUND										
	STA. 622+00.00 TO STA. 627+66.00	566.00				252	21		57	566
	STA. 627+25.00 TO STA. 632+14.50	489.50		218	218			34	49	330
	STA. 632+14.50 TO STA. 634+00.00	185.50				82	7		19	186
	STA. 627+35.58 TO STA. 629+46.61	211.03	141							
	STA. 629+97.32 TO STA. 631+81.59	184.27	123							
SUB-TOTAL			264	218	218	334	28	34	124	1,082
SN 059-2509										
EASTBOUND										
	STA. 689+50.00 TO STA. 693+26.53	376.53				167	14		38	377
	STA. 693+26.53 TO STA. 698+50.00	523.47				349	29		79	523
	STA. 698+50.00 TO STA. 704+00.00	550.00		489	489			75	134	350
	STA. 704+00.00 TO STA. 706+50.00	250.00				167	14		38	250
	STA. 699+50.00 TO STA. 701+21.94	171.94	115							
	STA. 701+49.32 TO STA. 703+03.64	154.32	103							
SUB-TOTAL			218	489	489	683	57	75	288	1500
WESTBOUND										
	STA. 689+50.00 TO STA. 693+73.47	423.47				188	16		42	423
	STA. 693+73.47 TO STA. 697+41.50	368.03				245	21		55	368
	STA. 697+41.50 TO STA. 699+31.50	190.00				84	7		19	190
	STA. 699+31.50 TO STA. 703+10.50	379.00		168	168			26	38	200
	STA. 703+10.50 TO STA. 706+50.00	339.50				151				340
	STA. 699+58.00 TO STA. 700+93.17	135.17	90							
	STA. 701+20.91 TO STA. 702+99.22	178.31	119							
SUB-TOTAL			209	168	168	669	44	26	154	1521
TOTAL			1004	1612	1612	1925	149	248	786	4973

1 REVISED SHEET 11/9/2022

MODEL: Default
 FILE: \\nas101-pw-bentley.com\PI\DOT\Documents\DOT_Offices\Dir\dir: E:\Projects\DOT\0590001\CAD\Sheet\0590001-Schedule.dgn

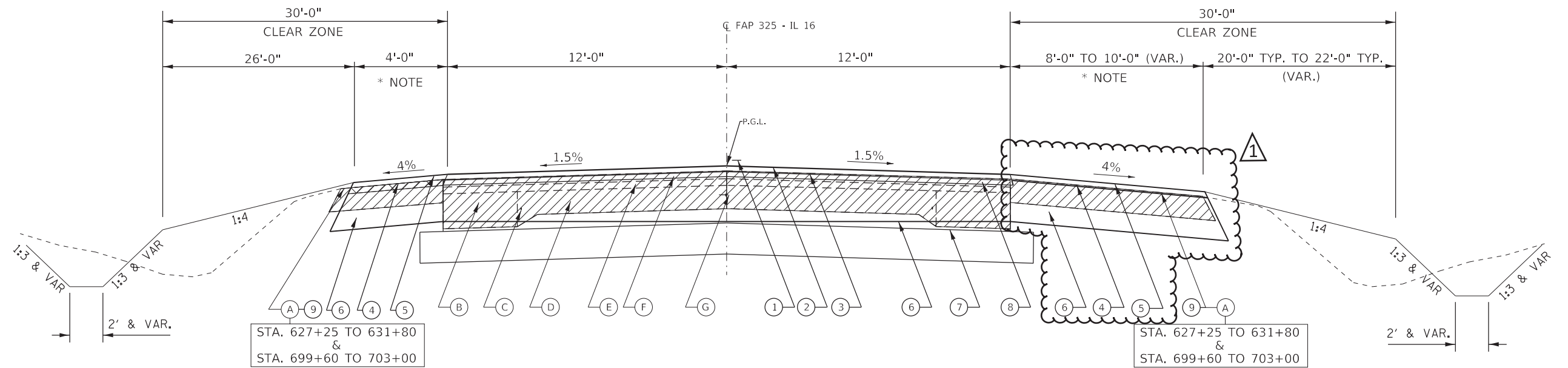
USER NAME = Sylvette.Cancel	DESIGNED -	REVISED -
	DRAWN -	REVISED -
PLOT SCALE = 100.0000' / in.	CHECKED -	REVISED -
PLOT DATE = 11/8/2022	DATE -	REVISED -

**STATE OF ILLINOIS
DEPARTMENT OF TRANSPORTATION**

**SCHEDULE OF QUANTITIES
FAP 325 (IL 16)**

SCALE: SHEET OF SHEETS STA. TO STA.

F.A.P. RTE.	SECTION	COUNTY	TOTAL SHEETS	SHEET NO.
325	(114,116)B-2,3,4	MACOUPIN	194	10
CONTRACT NO. 72B64				
ILLINOIS		FED. AID PROJECT		



TYPICAL SECTION # 3

STA. 628+90.00 TO STA. 630+25.00
 STA. 700+68.25 TO STA. 701+73.75

MILLING VARIES FROM
 STA. 628+00.00 TO STA. 631+00.00

LEGEND

- | | | |
|--|---|--|
| (A) EXIST. BITUMINOUS SHOULDER (6" MIN) | (1) PROP. PAVEMENT MARKING | (7) PROP. SUB BASE GRANULAR MATERIAL, TY B, 8" |
| (B) EXIST. BITUMINOUS CONCRETE BASE COURSE WIDENING 9" | (2) PROP. HMA SURFACE COURSE, IL 9.5, MIX "C" N50 (1 1/2") | (8) PROP. PAVEMENT REMOVAL |
| (C) EXIST. 3/4" DIA SMOOTH BAR | (3) PROP. HMA BINDER COURSE, IL 9.5FG, N50 (1 1/4") | (9) PROP. PAVED SHOULDER REMOVAL |
| (D) EXIST. 18" PCC PAV T | (4) PROP. HMA SURFACE REMOVAL VARIABLE DEPTH (1 1/2" TYP.) | (10) PROP. HMA SHOULDERS, (6 1/2" SQYD) |
| (E) EXIST. BITUMINOUS CONCRETE BINDER COURSE, (1 3/4") | (5) PROP. HMA SHOULDERS, (2 3/4" TON) | (11) PROP. HMA SHOULDERS, (1 1/2" TON) |
| (F) EXIST. BITUM. CON. SURFACE COURSE MIX "D", CLASS 1, (1 1/4") | (6) PROP. HMA BASE CSE (OPTION),
(10 3/4" ON SHOULDERS & 12" ON TRAFFIC LANES) | |
| (G) EXIST. METAL JOINT & 1/2" TIE BAR | | |

1 REVISED SHEET 11/9/2022

* NOTE:
 SEE SCHEDULE FOR SHOULDER
 WIDTH LIMITS & PR IMPROVEMENTS

MODEL: Default
 FILE: \\nas01.pva.usdpc.pa.gov\share\pva\dot\Documents\DOT_Offices\Dir\dr_6\Projects\067286\1\CAD\Drawings\067286\4-11-21\Typical_Sections.dgn

USER NAME = Sylvette.Cancel	DESIGNED -	REVISED -
DRAWN -	REVISOR -	
PLOT SCALE = 40.0000 ' / in.	CHECKED -	REVISOR -
PLOT DATE = 11/8/2022	DATE -	REVISOR -

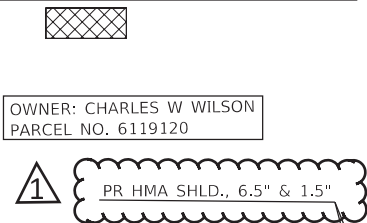
**STATE OF ILLINOIS
 DEPARTMENT OF TRANSPORTATION**

**TYPICAL SECTION SHEETS
 FAP 325 (IL 16)**

SCALE: SHEET OF SHEETS STA. TO STA.

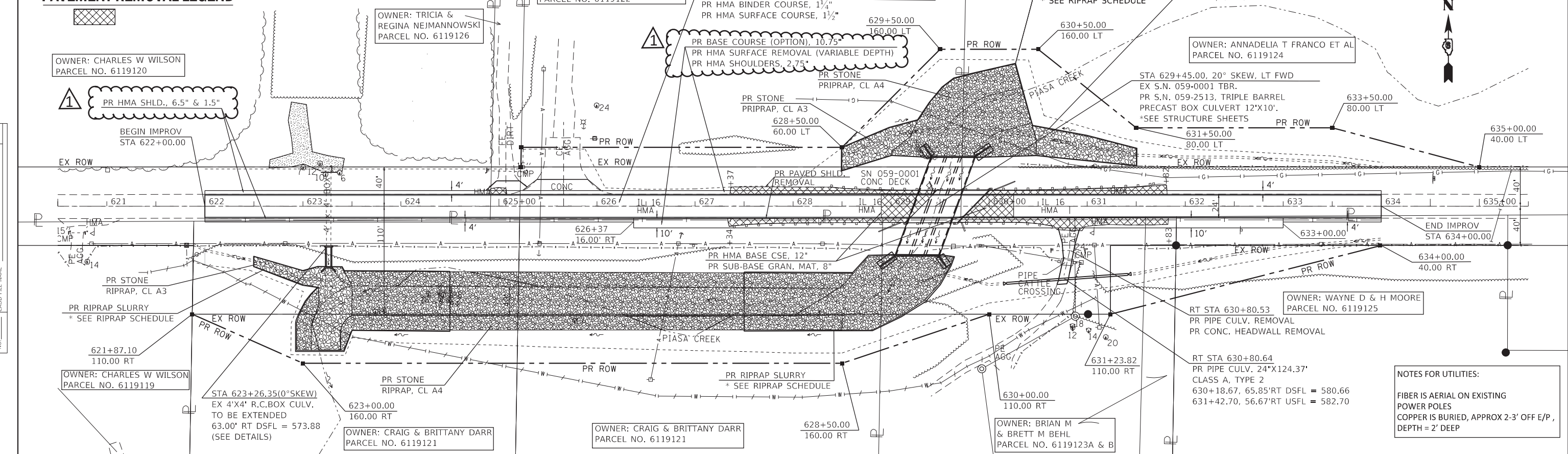
F.A. RTE.	SECTION	COUNTY	TOTAL SHEETS	SHEET NO.
325	(114, 116)B-2,3,4	MACOUPIN	194	17
CONTRACT NO. 72B64				
ILLINOIS FED. AID PROJECT				

PAVEMENT REMOVAL LEGEND

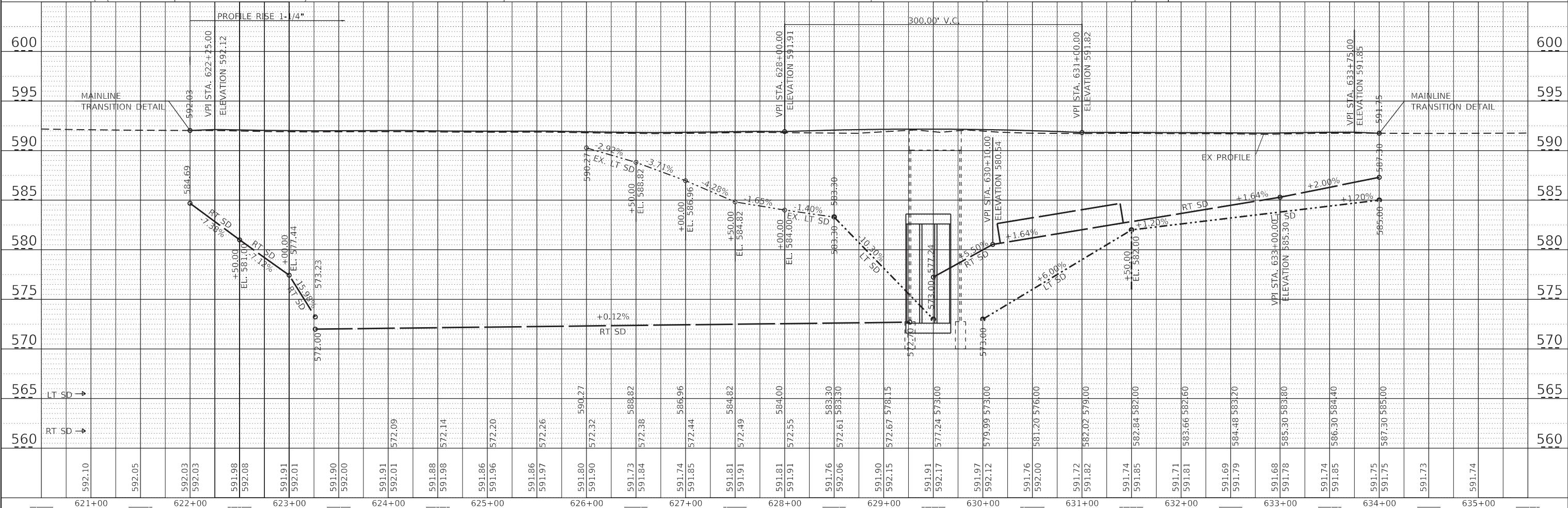


DATE	
BY	
NO.	
NO.	
NO.	
NO.	
NO.	
NO.	

DATE	
BY	
NO.	
NO.	
NO.	
NO.	
NO.	
NO.	



NOTES FOR UTILITIES:
 FIBER IS AERIAL ON EXISTING POWER POLES
 COPPER IS BURIED, APPROX 2-3' OFF E/P, DEPTH = 2' DEEP



MODEL: Default
FILE NAME: p:\1118\2022\pavement_removal\11182022\11182022\11182022.dwg
PROJECT: 11182022
DATE: 11/8/2022

USER NAME = Sylvette.Cancel	DESIGNED -	REVISED -
	DRAWN -	REVISED -
PLOT SCALE = 100.0000' / in.	CHECKED -	REVISED -
PLOT DATE = 11/8/2022	DATE -	REVISED -

**STATE OF ILLINOIS
 DEPARTMENT OF TRANSPORTATION**

PROPOSED PLAN & PROFILE SHEETS (SN 059-2513)

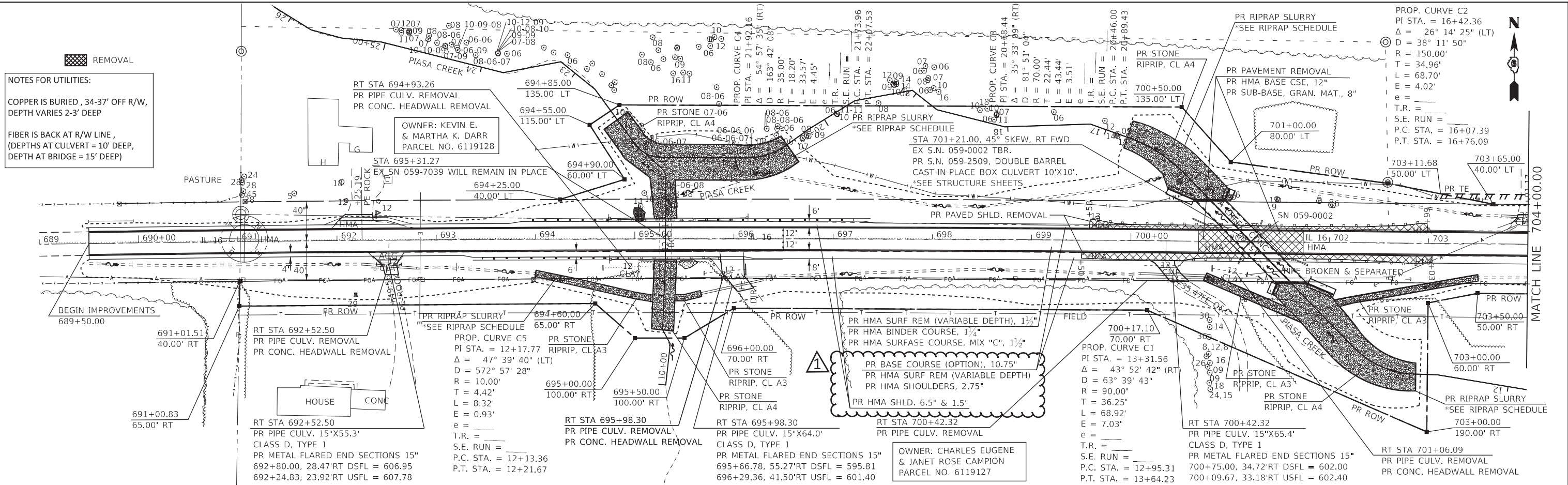
F.A.P. RTE.	SECTION	COUNTY	TOTAL SHEETS	SHEET NO.
325	(114,116)B-2,3,4	MACOUPIN	194	18
				CONTRACT NO. 72B64

SCALE: _____ SHEET _____ OF _____ SHEETS STA. _____ TO STA. _____

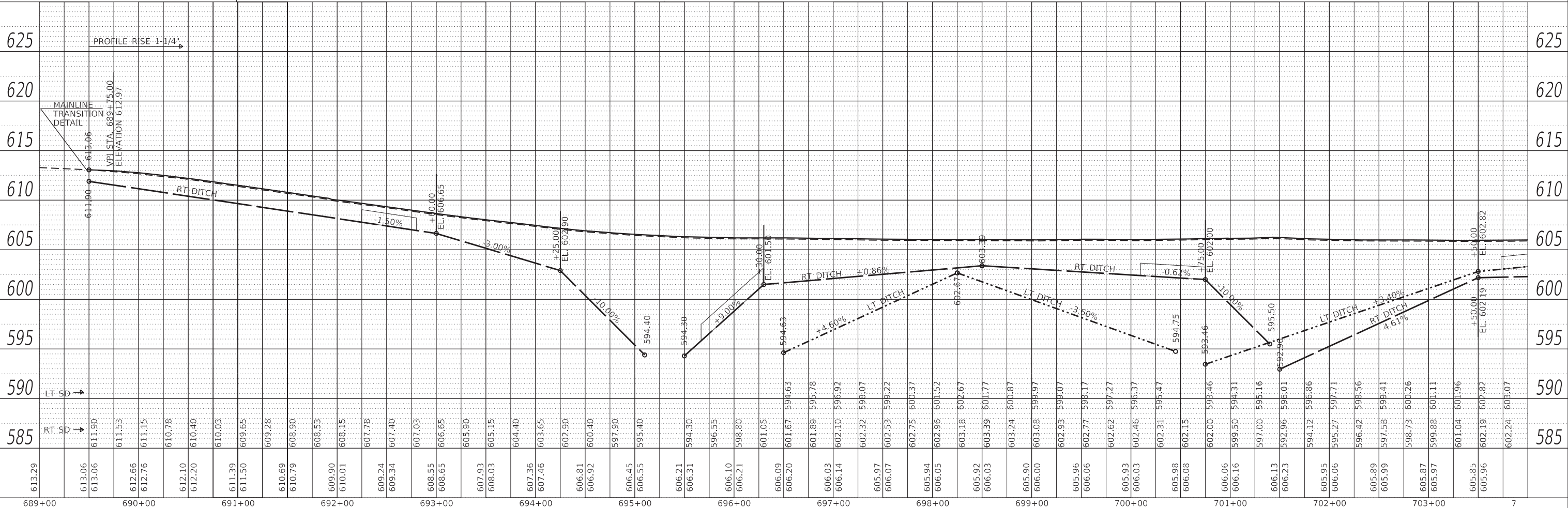
ILLINOIS FED. AID PROJECT **REVISED SHEET 11/9/2022**

PLAN	SURVEYED	DATE
	PLOTTED	
	ALIGNED	
	CHECKED	
	FILE NAME	
	NO.	

NOTES FOR UTILITIES:
 COPPER IS BURIED, 34-37' OFF R/W, DEPTH VARIES 2-3' DEEP
 FIBER IS BACK AT R/W LINE, (DEPTHS AT CULVERT = 10' DEEP, DEPTH AT BRIDGE = 15' DEEP)



PROFILE	SURVEYED	DATE
	PLOTTED	
	GRADES	
	CHECKED	
	STRUCTURE	
	NOTATION	
	NO.	



**STATE OF ILLINOIS
 DEPARTMENT OF TRANSPORTATION**

PROPOSED PLAN & PROFILE SHEETS (SN 059-2509)

USER NAME = Sylvette.Cancel	DESIGNED -	REVISED -	F.A.P. RTE.	SECTION	COUNTY	TOTAL SHEETS	SHEET NO.
PLOT SCALE = 100.0000' / in.	DRAWN -	REVISED -	325	(114,116)B-2,3,4	MACOUPIN	194	19
PLOT DATE = 11/8/2022	CHECKED -	REVISED -	SCALE: SHEET OF SHEETS STA. TO STA.		CONTRACT NO. 72B64		
	DATE -	REVISED -			ILLINOIS FED. AID PROJECT		

11/9/2022