

STATE OF ILLINOIS
 DEPARTMENT OF TRANSPORTATION
 DIVISION OF HIGHWAYS

**PROPOSED
 HIGHWAY PLANS**

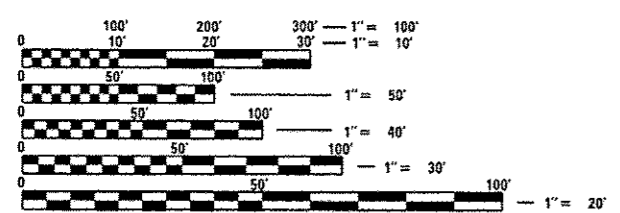
ROUTE: VARIOUS STRUCTURES
 VARIOUS LOCATIONS S. OF & INCLUDING I-80 AND W. OF US 52
 SECTION: 2014-0351
 BRIDGE DECK SEALING
 WILL COUNTY

C-91-346-14

FOR INDEX OF SHEETS, SEE SHEET NO. 2

IMPROVEMENTS ARE LOCATED IN THE TOWNSHIPS OF CHANNAHON,
 CUSTER, FLORENCE, FRANKFORT, JACKSON, JOILET, NEW LENOX,
 REED, TROY, WESLEY, AND WILMINGTON.

SEE LOCATION MAPS
 SHEETS 5 - 12



FULL SIZE PLANS HAVE BEEN PREPARED USING STANDARD
 ENGINEERING SCALES. REDUCED SIZED PLANS WILL NOT
 CONFORM TO STANDARD SCALES. IN MAKING MEASUREMENTS
 ON REDUCED PLANS, THE ABOVE SCALES MAY BE USED.

J.U.L.I.E.
 JOINT UTILITY LOCATION INFORMATION FOR EXCAVATION
 1-800-892-0123
 OR 811

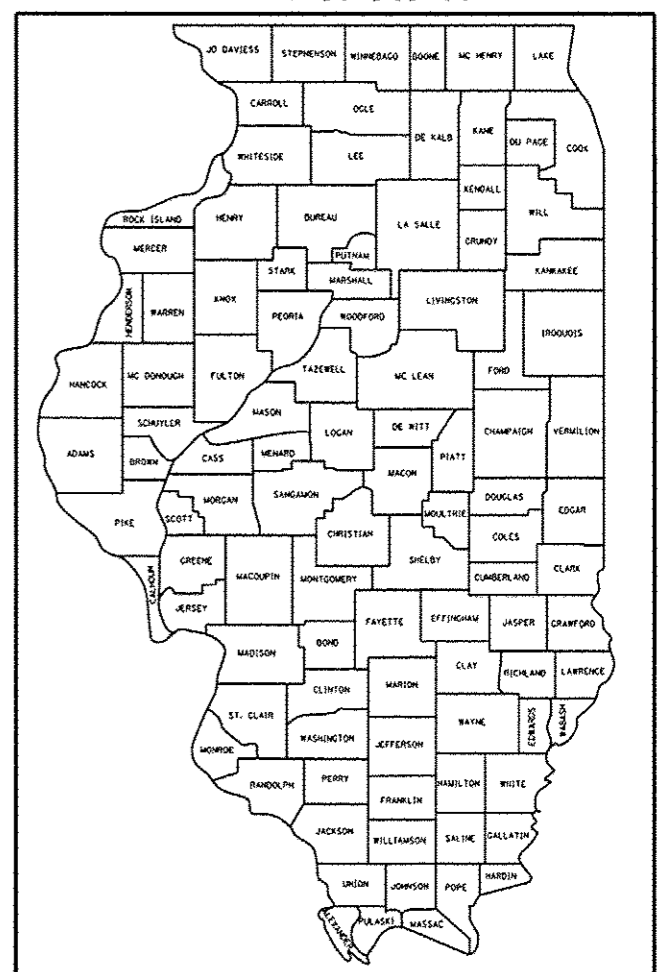
PROJECT ENGINEER - J. ALAIN MIDY (847) 221-3056
 PROJECT MANAGER - ISSAM RAYYAN (847) 705-4178

CONTRACT NO. 60Y29

RYE.	SECTION	COUNTY	TOTAL SHEETS	SHEET NO.
VARIOUS	2014-0351	WILL	50	1
		ILLINOIS	CONTRACT NO. 60Y29	

* 50 41 = 51

D-91-346-14



LOCATION OF SECTION INDICATED THUS: [thick black bar]

STATE OF ILLINOIS
 DEPARTMENT OF TRANSPORTATION
 DIVISION OF HIGHWAYS

SUBMITTED August 1, 2014
John Fontana, Jr.
 DEPUTY DIRECTOR OF HIGHWAYS, REGIONAL ENGINEER

Oct 17, 2014
John D. Baranzelli, P.E.
 ENGINEER OF DESIGN AND ENVIRONMENT

Oct 17, 2014
Ormer Cerman, P.E.
 DIRECTOR OF HIGHWAYS, CHIEF ENGINEER

PRINTED BY THE AUTHORITY
 OF THE STATE OF ILLINOIS