

F.A. RTE.	SECTION	COUNTY	TOTAL SHEETS	SHEET NO.
VARIOUS	2014-0401	LAKE	42	1
		ILLINOIS	CONTRACT NO. 60Y34	

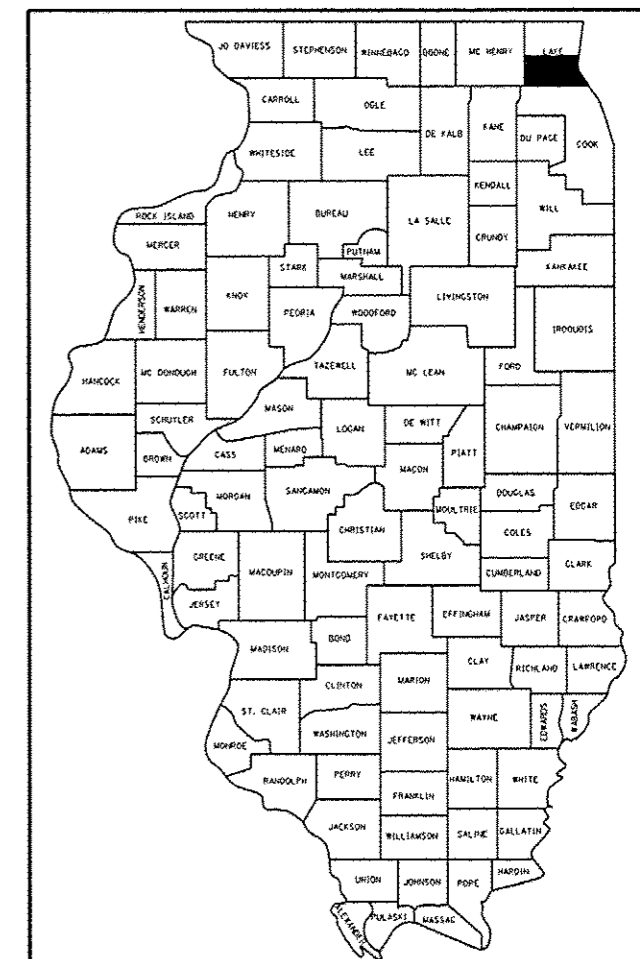
**STATE OF ILLINOIS
DEPARTMENT OF TRANSPORTATION
DIVISION OF HIGHWAYS**

**PROPOSED
HIGHWAY PLANS**

**ROUTE: VARIOUS (VARIOUS)
VARIOUS LOCATIONS: SOUTH OF IL. RTE. 137
SECTION: 2014-0401
BRIDGE DECK SEALING
LAKE COUNTY**

C-91-351-14

D-91-351-14

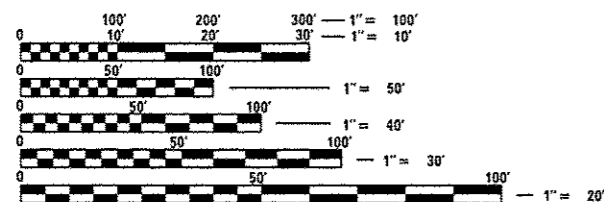


LOCATION OF SECTION INDICATED THUS: -

FOR INDEX OF SHEETS, SEE SHEET NO. 2

IMPROVEMENTS ARE LOCATED IN THE CITY OF NORTH CHICAGO, LAKE FOREST AND VILLAGES OF LAKE VILLA, LINCOLNSHIRE, LAKE FOREST, METTAWA BARRINGTON HILLS, LAKE BARRINGTON, HIGHLAND PARK, LAKE BLUFF, LIBERTYVILLE FOX RIVER GROVE, NORTH BARRINGTON, LINCOLNSHIRE, VERNON HILLS, LONG GROVE AND BUFFALO GROVE.
IMPROVEMENTS ARE LOCATED IN THE TOWNSHIPS OF CUBA, DEERFIELD, SHIELDS ELA, VERNON, WEST DEERFIELD, WAUCONDA, LIBERTYVILLE, MORAINES AND LAKE VILLA

**SEE LOCATION MAPS
SHEETS 5 - 11**



FULL SIZE PLANS HAVE BEEN PREPARED USING STANDARD ENGINEERING SCALES. REDUCED SIZED PLANS WILL NOT CONFORM TO STANDARD SCALES. IN MAKING MEASUREMENTS ON REDUCED PLANS, THE ABOVE SCALES MAY BE USED.

J.U.L.I.E.
JOINT UTILITY LOCATION INFORMATION FOR EXCAVATION
1-800-892-0123
OR 811

PROJECT ENGINEER - J. ALAIN MIDY (847) 221-3056
PROJECT MANAGER - ISSAM RAYYAN (847) 705-4178

CONTRACT NO. 60Y34

STATE OF ILLINOIS
DEPARTMENT OF TRANSPORTATION
DIVISION OF HIGHWAYS

SUBMITTED August 11, 2014
John Furman
DEPUTY DIRECTOR OF HIGHWAYS, REGION ENGINEER

Oct 17, 2014
John D. Baranzelli P.E.
ENGINEER OF DESIGN AND ENVIRONMENT

Oct 17, 2014
Omar Osman P.E.
DIRECTOR OF HIGHWAYS, CHIEF ENGINEER

**PRINTED BY THE AUTHORITY
OF THE STATE OF ILLINOIS**