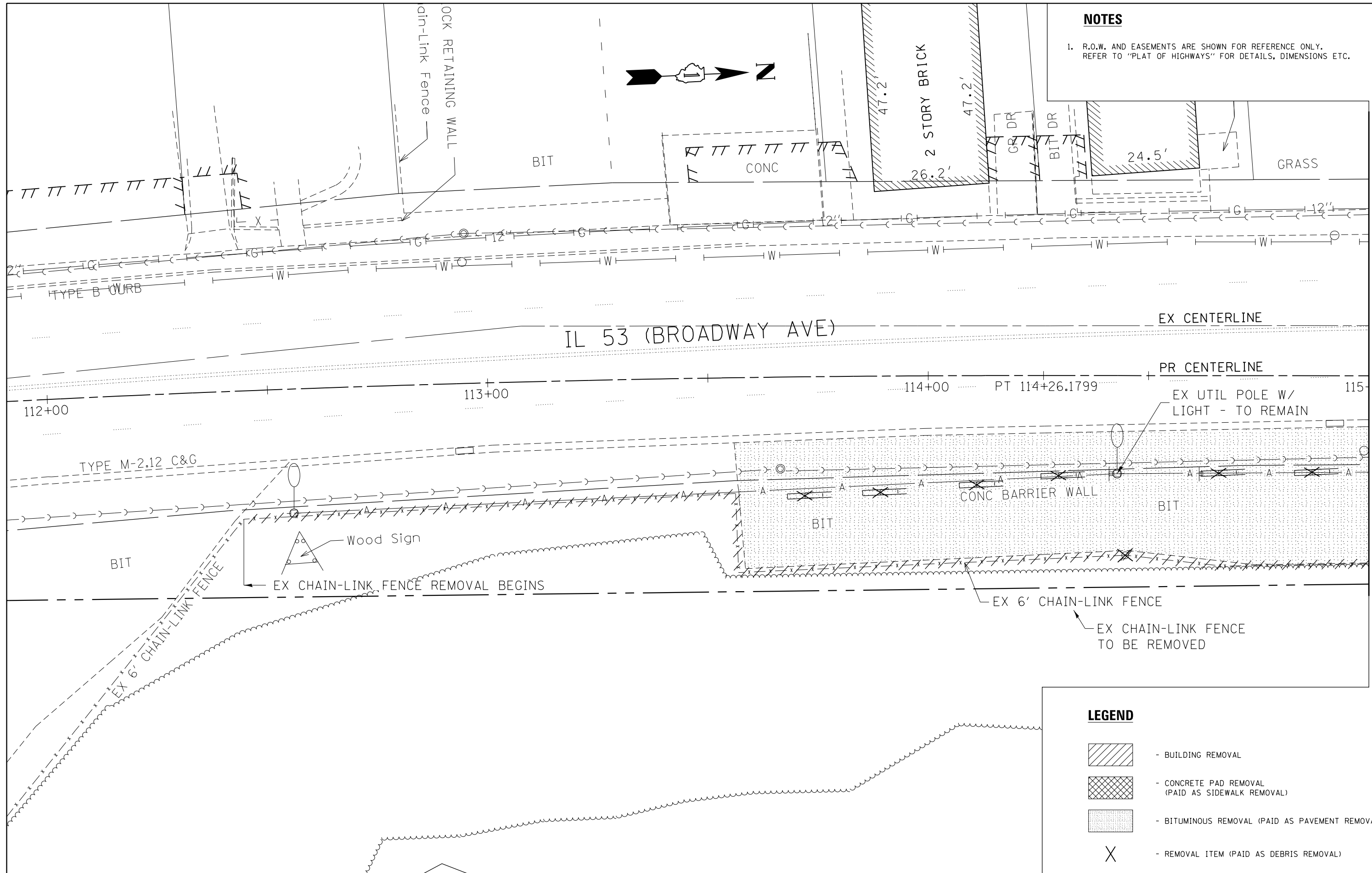






NOTES

1. R.O.W. AND EASEMENTS ARE SHOWN FOR REFERENCE ONLY. REFER TO "PLAT OF HIGHWAYS" FOR DETAILS, DIMENSIONS ETC.



MATCH LINE STA. 115+00

LEGEND

-  - BUILDING REMOVAL
-  - CONCRETE PAD REMOVAL (PAID AS SIDEWALK REMOVAL)
-  - BITUMINOUS REMOVAL (PAID AS PAVEMENT REMOVAL)
-  - REMOVAL ITEM (PAID AS DEBRIS REMOVAL)

FILE NAME =	USER NAME = Velichkovv	DESIGNED -	REVISED -
es:\pw\work\p\midot\velichkovv\d0402920\140514-sht-plan.dgn		DRAWN -	REVISED -
Default	PLOT SCALE = 20.0000' / in.	CHECKED -	REVISED -
	PLOT DATE = 8/25/2014	DATE -	REVISED -

**STATE OF ILLINOIS
DEPARTMENT OF TRANSPORTATION**

**IL 53 (2000 N BROADWAY ST, CREST HILL)
DEMOLITION PLAN**

SCALE: SHEET OF SHEETS STA. TO STA.

F.A.P. RTE.	SECTION	COUNTY	TOTAL SHEETS	SHEET NO.
112	MY-DM 14	WILL	16	4
ILLINOIS FED. AID PROJECT			CONTRACT NO. 60Y47	