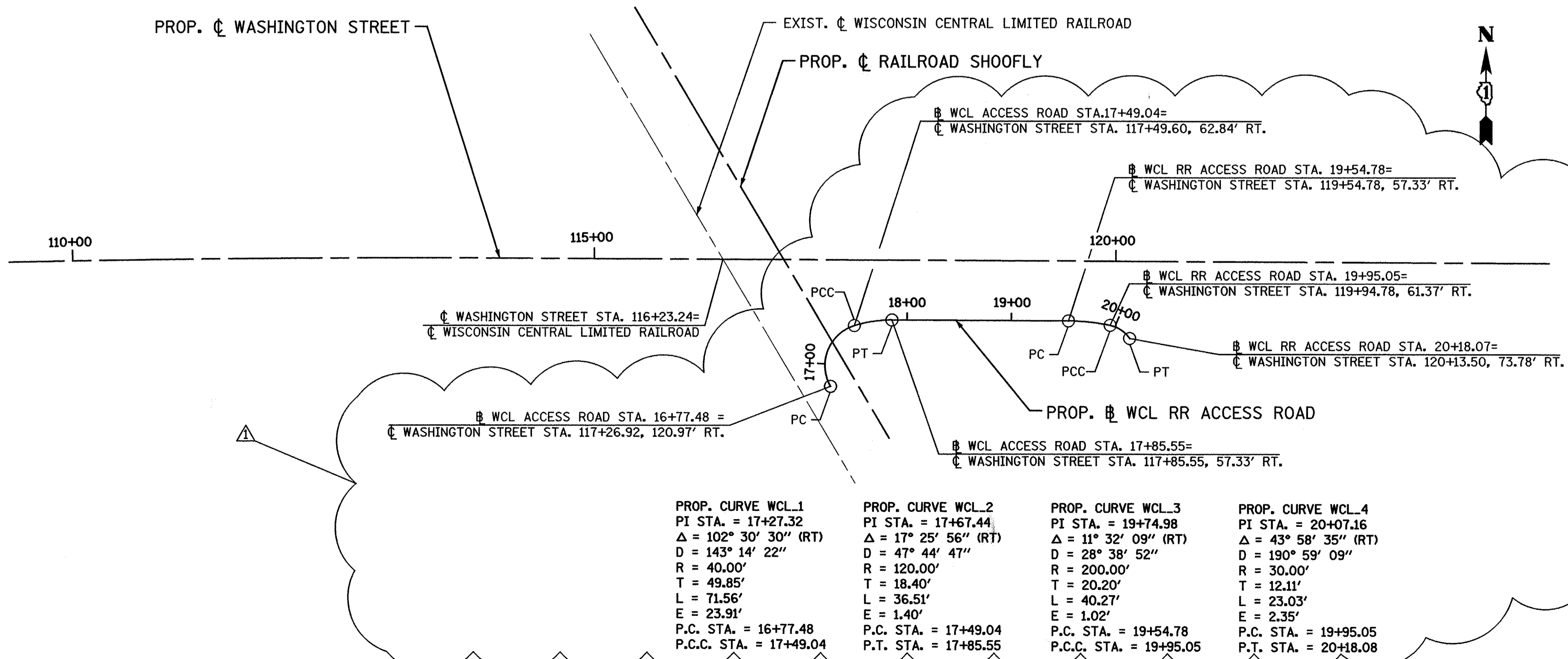


PROP. CURVE MOT-ALI-1	PROP. CURVE MOT-ALI-2	PROP. CURVE MOT-ALI-3	PROP. CURVE MOT-ALI-4	PROP. CURVE MOT-ALI-5
PI STA. = 11+49.17	PI STA. = 14+43.10	PI STA. = 19+19.83	PI STA. = 30+09.63	PI STA. = 32+81.31
$\Delta = 23^\circ 34' 09''$ (LT)	$\Delta = 23^\circ 32' 19''$ (RT)	$\Delta = 2^\circ 09' 17''$ (RT)	$\Delta = 21^\circ 46' 17''$ (RT)	$\Delta = 21^\circ 46' 17''$ (LT)
D = 8° 00' 48"	D = 8° 00' 48"	D = 0° 19' 29"	D = 8° 00' 48"	D = 8° 00' 48"
R = 715.00'	R = 715.00'	R = 17,651.90'	R = 715.00'	R = 715.00'
T = 149.17'	T = 148.97'	T = 331.96'	T = 137.50'	T = 137.50'
L = 294.12'	L = 293.74'	L = 663.85'	L = 271.69'	L = 271.69'
E = 15.40'	E = 15.35'	E = 3.12'	E = 13.10'	E = 13.10'
e = N.C.	e = N.C.	e = N.C.	e = N.C.	e = N.C.
P.C. STA. = 10+00.00	P.R.C. STA. = 12+94.12	P.C.C. STA. = 15+87.86	P.C. STA. = 28+72.12	P.R.C. STA. = 31+43.81
P.R.C. STA. = 12+94.12	P.C.C. STA. = 15+87.86	P.T. STA. = 22+51.71	P.R.C. STA. = 31+43.81	P.T. STA. = 34+51.50

DESCRIPTION	ALIGNMENT POINT	N	E
CURVE MOT-ALI-1	PC 10+00.00	2072823.302	1059810.433
	PI 11+49.17	2072828.161	1059959.526
	PRC 12+94.12	2072892.231	1060094.237
CURVE MOT-ALI-2	PRC 12+94.12	2072892.231	1060094.237
	PI 14+43.10	2072956.214	1060228.768
	PCC 15+87.86	2072961.146	1060377.658
CURVE MOT-ALI-3	PCC 15+87.86	2072961.146	1060377.658
	PI 19+19.83	2072972.138	1060709.439
	PT 22+51.71	2072970.647	1061041.399
CURVE MOT-ALI-4	PC 28+72.12	2072967.860	1061661.805
	PI 30+09.63	2072967.242	1061799.305
	PRC 31+43.81	2072915.669	1061926.770
CURVE MOT-ALI-5	PRC 31+43.81	2072915.669	1061926.770
	PI 32+81.31	2072864.096	1062054.234
	PT 34+51.50	2072863.479	1062191.734
POT 36+73.35	2072862.320	1062449.585	



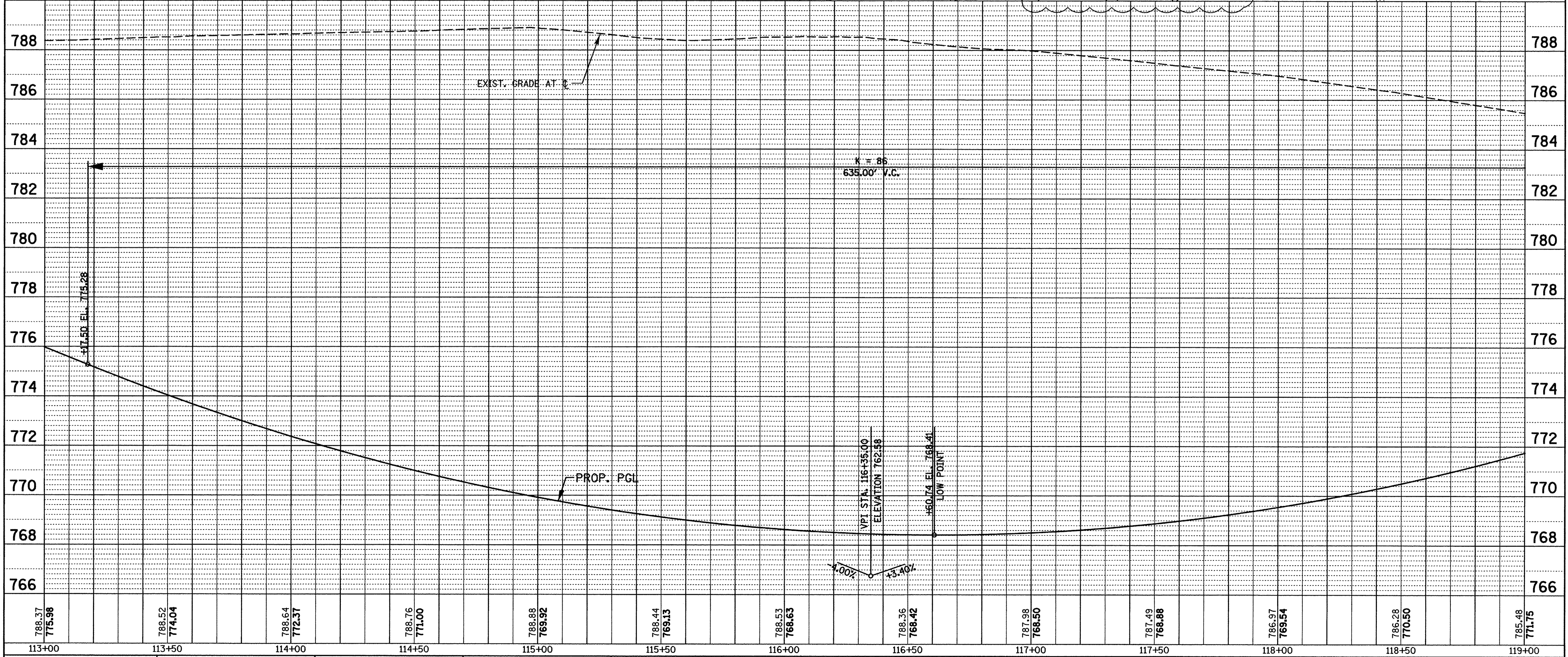
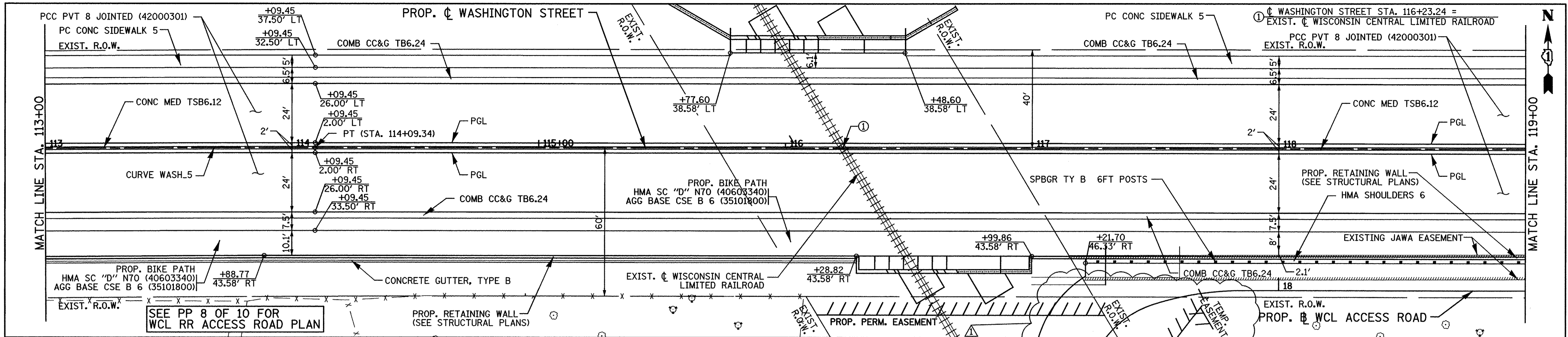
PROP. CURVE WCL_1	PROP. CURVE WCL_2	PROP. CURVE WCL_3	PROP. CURVE WCL_4
PI STA. = 17+27.32	PI STA. = 17+67.44	PI STA. = 19+74.98	PI STA. = 20+07.16
$\Delta = 102^\circ 30' 30''$ (RT)	$\Delta = 17^\circ 25' 56''$ (RT)	$\Delta = 11^\circ 32' 09''$ (RT)	$\Delta = 43^\circ 58' 35''$ (RT)
D = 143° 14' 22"	D = 47° 44' 47"	D = 28° 38' 52"	D = 190° 59' 09"
R = 40.00'	R = 120.00'	R = 200.00'	R = 30.00'
T = 49.85'	T = 18.40'	T = 20.20'	T = 12.11'
L = 71.56'	L = 36.51'	L = 40.27'	L = 23.03'
E = 23.91'	E = 1.40'	E = 1.02'	E = 2.35'
P.C. STA. = 16+77.48	P.C. STA. = 17+49.04	P.C. STA. = 19+54.78	P.C. STA. = 19+95.05
P.C.C. STA. = 17+49.04	P.T. STA. = 17+85.55	P.C.C. STA. = 19+95.05	P.T. STA. = 20+18.08

DESCRIPTION	ALIGNMENT POINT	N	E
CURVE WCL_1	PC 16+77.78	2072728.251	1061357.899
	PI 17+27.32	2072771.556	1061333.215
	PCC 17+49.04	2072786.275	1061380.838
CURVE WCL_2	PCC 17+49.04	2072786.275	1061380.838
	PI 17+67.44	2072791.708	1061398.415
	PT 17+85.55	2072791.625	1061416.812
CURVE WCL_3	PC 19+54.78	2072790.865	1061586.042
	PI 19+74.98	2072790.774	1061606.244
	PCC 19+95.05	2072786.645	1061626.020
CURVE WCL_4	PCC 19+95.05	2072786.645	1061626.020
	PI 20+07.16	2072784.170	1061637.877
	PT 20+18.08	2072774.154	1061644.692

**NOTE:**  
ALL ELEVATIONS SHOWN ON THESE PLANS ARE BASED ON VERTICAL DATUM NGVD29 AND COORDINATES ARE BASED ON STATE PLANE ILLINOIS EAST ZONE (NAD 83, 2007). THE CONTRACTOR SHALL VERIFY ALL ELEVATIONS PRIOR TO COMMENCING WORK.

PLAN	SURVEYED	DATE
	PLOTTED	
	NOTED	
	BY	
	NO.	

PROFILE	SURVEYED	DATE
	PLOTTED	
	NOTED	
	BY	
	NO.	



788.37 775.98	788.52 774.04	788.64 772.37	788.76 771.00	788.88 769.92	788.44 769.13	788.53 768.63	788.36 768.42	787.98 768.50	787.49 768.88	786.97 769.54	786.28 770.50	785.48 771.75
113+00	113+50	114+00	114+50	115+00	115+50	116+00	116+50	117+00	117+50	118+00	118+50	119+00

PATRICK ENGINEERING INC.  
 4970 VARSITY DRIVE  
 LISLE, IL 60532  
 patrickengineering.com

USER NAME = mvesak(Rdwy\_L191e)  
 PLOT CONFIG = PDF(Grey\_Large).plt  
 PLOT SCALE = 1:20  
 PLOT DATE = 10/30/2014 6:48:27 PM

DESIGNED - MJV  
 DRAWN - MJV  
 CHECKED - MJV  
 DATE - 6/30/2014

REVISED - 10/31/2014  
 REVISED -  
 REVISED -  
 REVISED -

STATE OF ILLINOIS  
 DEPARTMENT OF TRANSPORTATION

WASHINGTON STREET FROM HARYAN WAY TO LAKE STREET  
 ROADWAY PLAN AND PROFILE

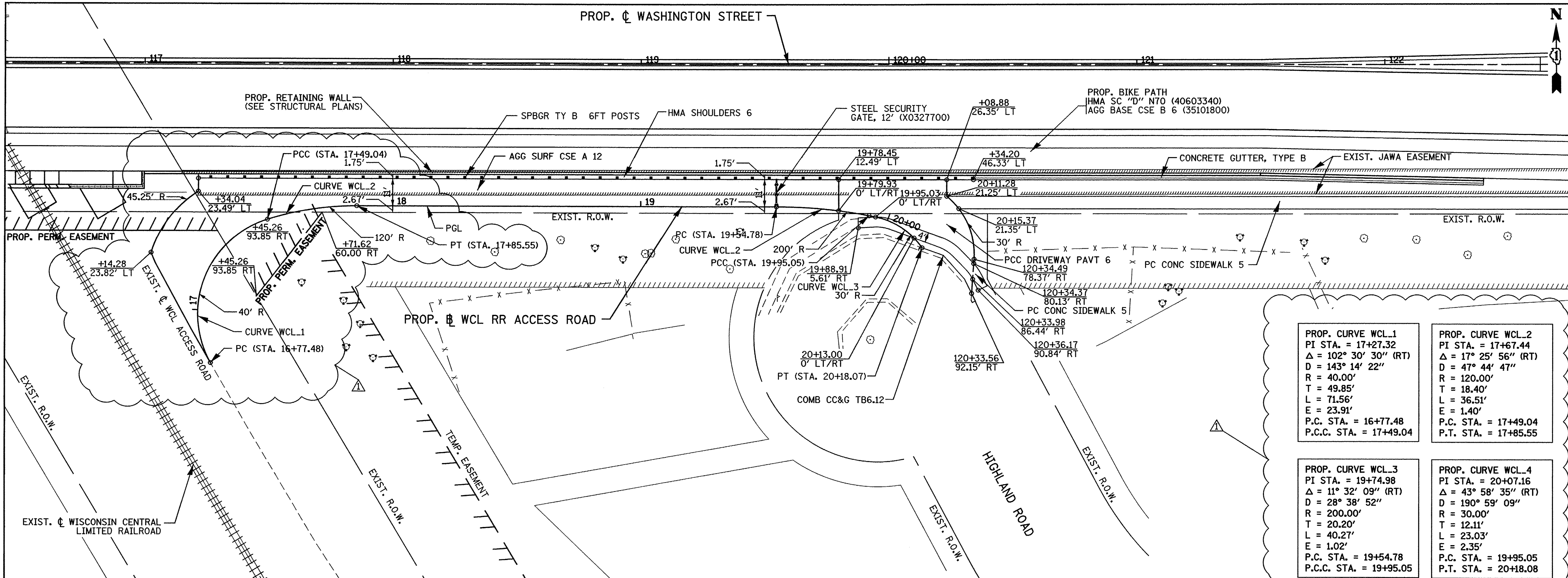
SCALE: 1"=20'  
 SHEET NO. PP 4 OF 10  
 STA. 113+00 TO STA. 119+00

F.A.U. RTE. 187	SECTION 11-00121-11-BR	COUNTY LAKE	TOTAL SHEETS 496	SHEET NO. 41
FED. ROAD DIST. NO. ILLINOIS FED. AID PROJECT				

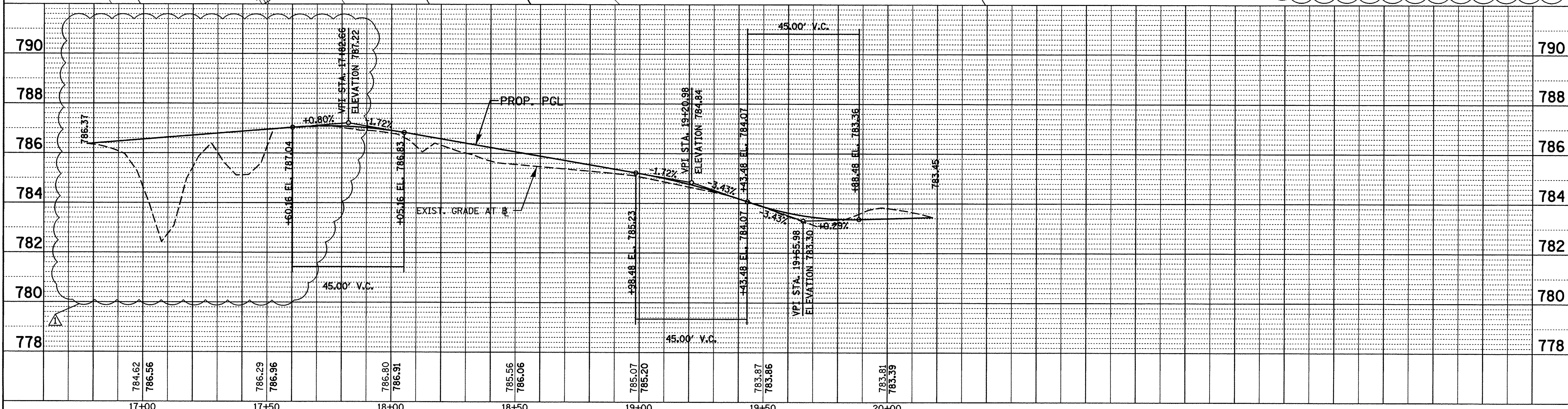
61A63

DATE	
BY	
PLAN	SURVEYED
	PLOTTED
	NOTED
	REVISIONS
	RT OF WAY CHECKED
	NO.
	CADD FILE NAME

DATE	
BY	
PROFILE	SURVEYED
	PLOTTED
	NOTED
	REVISIONS
	STRUCTURE NOTATIONS CIRCD
	NO.



<b>PROP. CURVE WCL_1</b> PI STA. = 17+27.32 $\Delta = 102^\circ 30' 30''$ (RT) $D = 143' 14' 22''$ $R = 40.00'$ $T = 49.85'$ $L = 71.56'$ $E = 23.91'$ P.C. STA. = 16+77.48 P.C.C. STA. = 17+49.04	<b>PROP. CURVE WCL_2</b> PI STA. = 17+67.44 $\Delta = 17^\circ 25' 56''$ (RT) $D = 47' 44' 47''$ $R = 120.00'$ $T = 18.40'$ $L = 36.51'$ $E = 1.40'$ P.C. STA. = 17+49.04 P.T. STA. = 17+85.55
<b>PROP. CURVE WCL_3</b> PI STA. = 19+74.98 $\Delta = 11^\circ 32' 09''$ (RT) $D = 28^\circ 38' 52''$ $R = 200.00'$ $T = 20.20'$ $L = 40.27'$ $E = 1.02'$ P.C. STA. = 19+54.78 P.C.C. STA. = 19+95.05	<b>PROP. CURVE WCL_4</b> PI STA. = 20+07.16 $\Delta = 43^\circ 58' 35''$ (RT) $D = 190^\circ 59' 09''$ $R = 30.00'$ $T = 12.11'$ $L = 23.03'$ $E = 2.35'$ P.C. STA. = 19+95.05 P.T. STA. = 20+18.08



PATRICK ENGINEERING INC. 4970 VARSITY DRIVE LISLE, IL 60532 patrickengineering.com	USER NAME = mvasak(Rdwy_L1s1e) PLOT CONFIG = PDF(Grey_Large).plt PLOT SCALE = 1:20 PLOT DATE = 10/29/2014 8:20:23 PM	DESIGNED - MJV DRAWN - MJV CHECKED - MJP DATE - 6/30/2014	REVISED - $\Delta$ 10/31/2014 REVISED - REVISED - REVISED -	<b>STATE OF ILLINOIS</b> <b>DEPARTMENT OF TRANSPORTATION</b>	<b>WASHINGTON STREET FROM HARYAN WAY TO LAKE STREET</b> <b>WCL RR ACCESS ROAD PLAN AND PROFILE</b>	F.A.U. RTE. 187 SECTION 11-00121-11-BR COUNTY LAKE TOTAL SHEETS 496 SHEET NO. 45 61A63	SCALE: 1"=20' SHEET NO. PP 8 OF 10 STA. 16+83.00 TO STA. 20+18.07 FED. ROAD DIST. NO. ILLINOIS FED. AID PROJECT
---	---	--	--	---	---	---	--

Q:\LCD007\21150\_884\Drawings\shfts\Rd\SS\_PP\_07\_GS\_WCLAccess\_20scale.dgn

### PANELBOARD

PANEL: P480    TYPE: NF    BUS: 225A    VOLTAGE: 277/480    3 PHASE, 4 WIRE

LOCATION: CONTROL BLDG    MOUNTING: FLUSH    MAIN: 225A    NEUTRAL: 100%    OPTIONS: BOLT-ON CIRCUIT BREAKERS  
 PANEL WIDTH: 20"    ENCLOSURE: NEMA 1    SURFACE    MAIN BREAKER    FEED THRU LUGS  
 ENCLOSURE: NEMA 1    BUS TYPE: COPPER    MAIN LUGS ONLY    DOOR TO DOOR CONSTRUCTION  
 FEEDER: TOP    GROUND: EQUIPMENT ISOLATED    SHUNT TRIP  
 BOTTOM    DIGITAL POWER METER

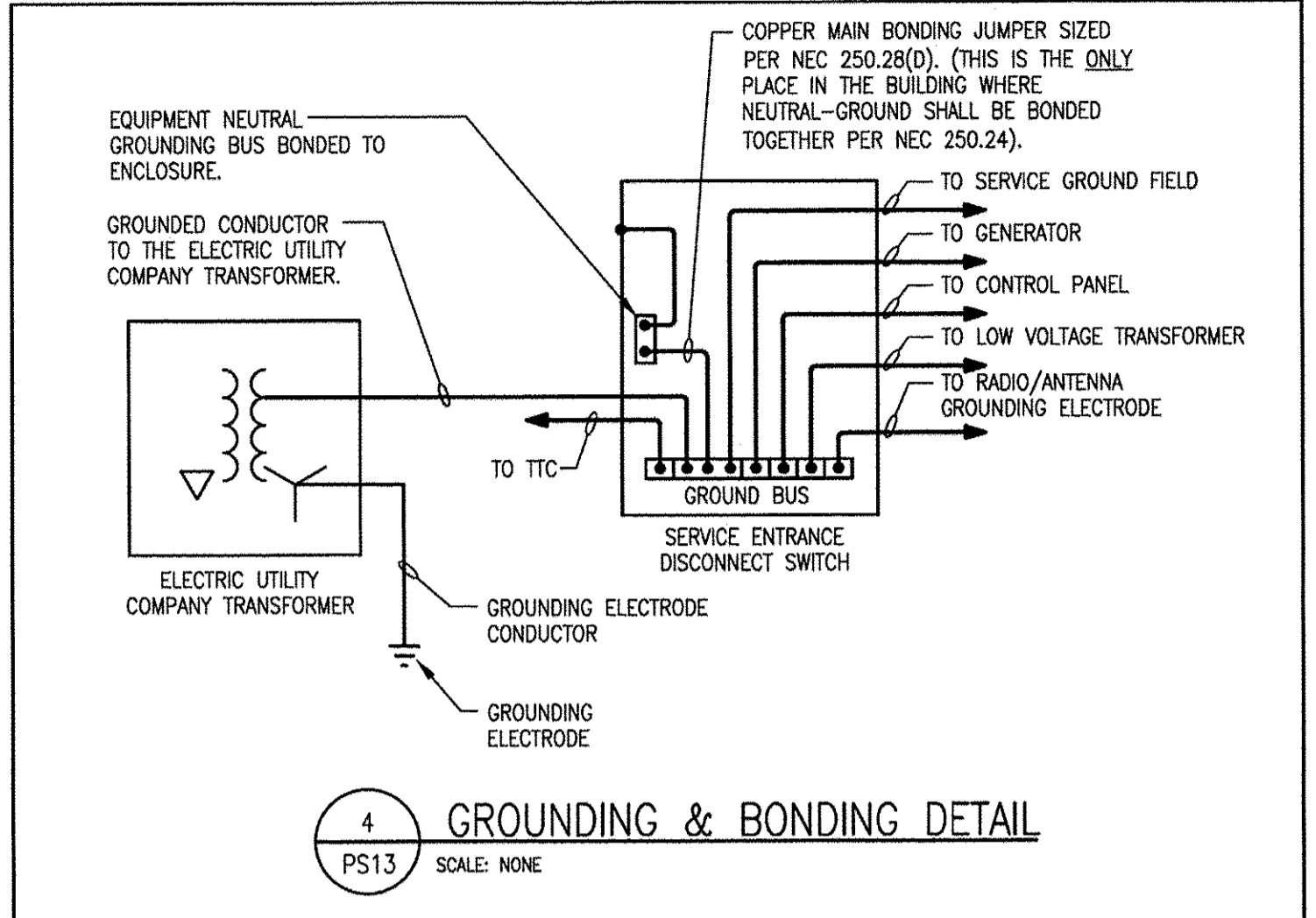
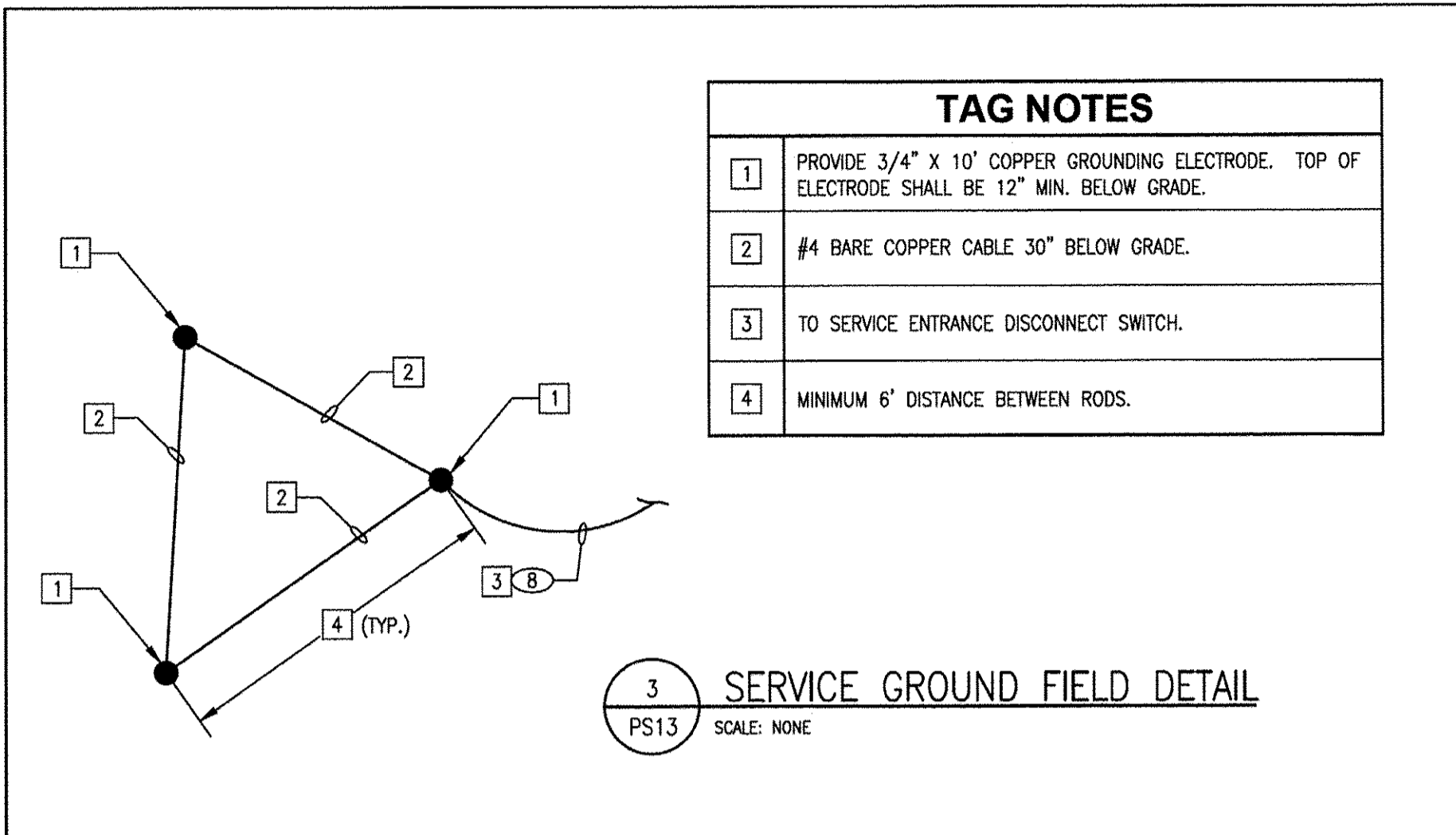
SHORT CIRCUIT RATING: 22,000 AIC

ITEM	TYPE	AMP. RATING	POLE	CIR. NO.	LEFT PHASE LOAD			RIGHT PHASE LOAD			CIR. NO.	AMP. RATING	POLE	TYPE	ITEM
					A	B	C	A	B	C					
30 HP PUMP (P-1)	M	80	3	1	10635			10635			2	80	3	M	30 HP PUMP (P-2)
	M			5		10635			10635		4			M	
	M			3			10635				6			M	
30 HP PUMP (P-3)	M	80	3	1	10635			1270			8	20	3	M	3HP SEWAGE EJECTOR (SE-1)
	M			3		10635			1270		10			M	
PANEL P208 VIA 10KVA XFMR	M			5	5750			500			12			M	*LIGHTING, UNIT BATTERIES
	E			3	5880			500			14	20	1	L	*LIGHTING, UNIT BATTERIES
SPARE	S	20	1	5		500		500		18	20	1	L	*TIMECLOCK	
SPD	E	30	3	19	0			1686		20	20	3	E	UNIT HEATER	
	E			21	0			1686		22				E	
	E			22	0			1686		24				E	
SPARE	S	20	1	25	500			500		26	20	1	S	SPARE	
SPARE	S	20	1	27		500		500		28	20	1	S	SPARE	
SPARE	S	20	1	29		500		500		30	20	1	S	SPARE	
SPARE	S	20	1	31	500			500		32	20	1	S	SPARE	
SPARE	S	20	1	33		500		500		34	20	1	S	SPARE	
SPARE	S	20	1	35		500		500		36	20	1	S	SPARE	
SPARE	S	80	3	37	1500			1500		38	20	3	S	SPARE	
	S			39		1500		1500		40			S	SPARE	
	S			41	1600			1600		42			S	SPARE	
CONNECTED LOAD (VA)					28520	29450	24270	16671	16671	16671					
CONNECTED LOAD PER PHASE (VA)					46091	48021	40841								

DEMAND					
TYPE	FACTOR	LOAD	TYPE	FACTOR	LOAD
L	1.25	1875	E	1.00	16428
R	0.70	0	S	0.25	3875
M	1.00	98528	X	0.00	0

TOTAL CONNECTED LOAD: 132953 VA  
 TOTAL DEMAND LOAD: 121703 VA  
 TOTAL ESTIMATED DEMAND: 148 AMPS

\* PROVIDE BREAKER LOCK ON



### PANELBOARD

PANEL: P208    TYPE: NQ    BUS: 100A    VOLTAGE: 120/208    1 PHASE, 3 WIRE

LOCATION: CONTROL BLDG    MOUNTING: FLUSH    MAIN: 60A    NEUTRAL: 100%    OPTIONS: BOLT-ON CIRCUIT BREAKERS  
 PANEL WIDTH: 20"    ENCLOSURE: NEMA 1    SURFACE    MAIN BREAKER    FEED THRU LUGS  
 ENCLOSURE: NEMA 1    BUS TYPE: COPPER    MAIN LUGS ONLY    DOOR TO DOOR CONSTRUCTION  
 FEEDER: TOP    GROUND: EQUIPMENT ISOLATED    SHUNT TRIP  
 BOTTOM

SHORT CIRCUIT RATING: 10,000 AIC

ITEM	TYPE	AMP. RATING	POLE	CIR. NO.	SINGLE PHASE LOAD			CIR. NO.	AMP. RATING	POLE	TYPE	ITEM
					A	B	C					
* GEN-NG BLOCK HEATER	E	20	2	1	250			2	20	1	E	* GEN-NG BATTERY CHARGER
	E			3		500		4	20	1	E	* GEN-NG ACCESSORIES
PIT LIGHTING UNIT BATTERIES	L	20	1	5	500			6	20	1	R	RECEPTACLES
* CARBON MONOXIDE DEVICES	E	20	1	7				8	20	1	R	RECEPTACLES
CONTROL PANEL	E	20	1	9	500			10	20	1	E	DAMPER OPERATOR
TTC	R	20	1	11		180		12	20	1	E	EXHAUST FAN
MAGNETIC FLOW METER	E	20	1	13	500			14	20	1	E	EXHAUST FAN
SPARE	S	20	1	15		500		16	20	1	S	SPARE
SPARE	S	20	1	17	500			18	20	1	S	SPARE
SPARE	S	20	1	19		500		20	20	1	S	SPARE
SPARE	S	20	1	21	500			22	20	1	S	SPARE
SPARE	S	20	1	23		500		24	20	1	S	SPARE
CONNECTED LOAD (VA)					2750	2900	3000					
CONNECTED LOAD PER PHASE (VA)					5750	5880						

DEMAND					
TYPE	FACTOR	LOAD	TYPE	FACTOR	LOAD
L	1.25	625	E	1.00	4750
R	0.70	895	S	0.25	1250
M	0.80	0	X	0.00	0

TOTAL CONNECTED LOAD: 11430 VA  
 TOTAL DEMAND LOAD: 7451 VA  
 TOTAL ESTIMATED DEMAND: 36 AMPS

\* PROVIDE BREAKER LOCK ON

### TAG NOTES

- UTILITY COMPANY COMPARTMENTAL TRANSFORMER FURNISHED AND INSTALLED BY THE ELECTRIC UTILITY COMPANY.
- PROVIDE 1-4" WIDE SWEEP RIGID ELBOWS FOR THE ELECTRIC UTILITY FOR THE UTILITY COMPANY SERVICE CABLES.
- PROVIDE EMPTY CONDUIT PER THE ELECTRIC UTILITY COMPANY REQUIREMENTS FOR COMPARTMENTAL TRANSFORMER GROUND CONDUCTOR.
- PROVIDE A CONCRETE PAD COMPLETE WITH RE-BAR AND FROST FOOTING PER THE ELECTRIC UTILITY COMPANY REQUIREMENTS.
- ALL ELECTRICAL EQUIPMENT LOCATED ON THE EXTERIOR SHALL BE NEMA 4, STAINLESS STEEL WITH DRIP SHIELD.
- PROVIDE ALL INTERLOCKING REQUIRED BETWEEN THE VARIABLE FREQUENCY DRIVE AND DISCONNECT SWITCHES.
- PROVIDE CURRENT TRANSFORMER AND METERING COMPARTMENT. ALL METERING EQUIPMENT SHALL MEET THE UTILITY COMPANY REQUIREMENTS.

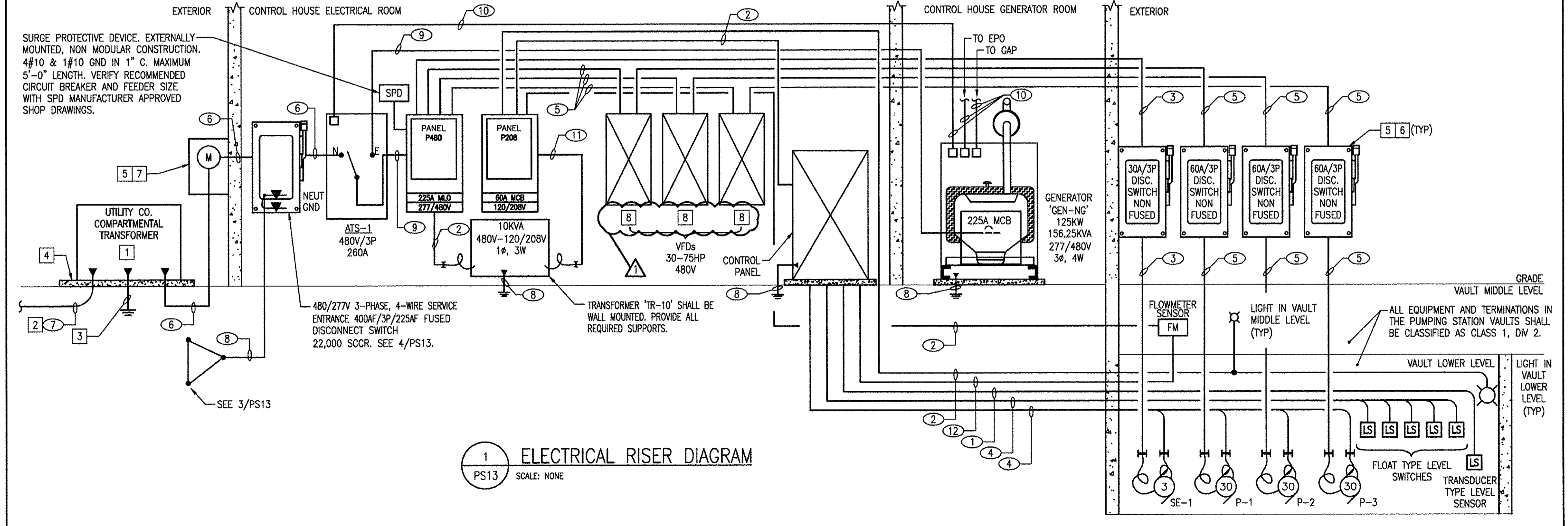
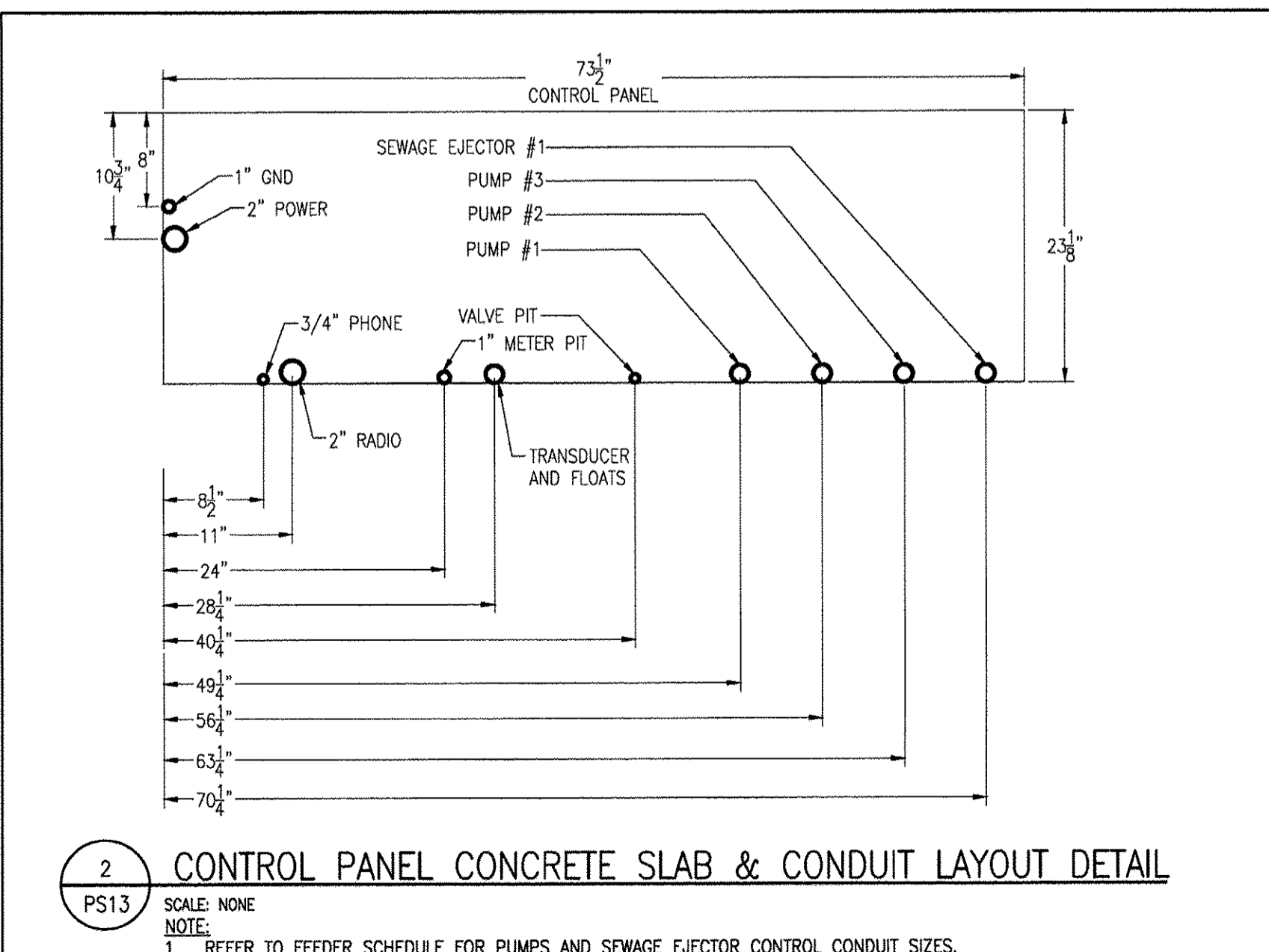
### TAG NOTES (CONTINUED)

- PROVIDE DRIVE ELECTRONIC BYPASS ON VARIABLE FREQUENCY DRIVE, INCLUDING ALL CONDUIT, WIRING AND TERMINATIONS FOR A COMPLETE INSTALLATION PER MANUFACTURER RECOMMENDATIONS.

### FEEDER SCHEDULE

FEEDER TAGS	LOAD AMPS	OC DEVICE AMPS	PHASE CONDUCTORS	GROUND	CONDUIT SIZE
1			RG-62U COAX		1"
2	20	20	2#12	1#12	1"
3	20	20	3#12	1#12	1"
4			5 SETS 3#18		1 1/4"
5		80	3#6	1#10	1 1/2"
6	225	225	4#4/0		3"
7				1#4	4"
8				1#4	1"
9	225	225	4#4/0	1#4	3"
10			4#18	1#18	1 1/2"
11	60	60	3#6	1#10	1 1/4"
12			3#18		1"

NOTES:  
 1 ALL SIZES ABOVE ARE BASED ON COPPER WITH A 75°C TEMPERATURE RATING.  
 2 VERIFY CONTROL WIRING WITH EQUIPMENT MANUFACTURER APPROVED SHOP DRAWINGS.



	PATRICK ENGINEERING INC. 4870 VARSITY DRIVE LISLE, IL 60532 patrickengineering.com	USER NAME = tkoeppert@rvj.lisle.il.gov PLOT CONFIG = PDF(Grey_Small).plt PLOT SCALE = 1:100 PLOT DATE = 11/10/2014 10:18:41 AM	DESIGNED - AG DRAWN - AG CHECKED - DF DATE - 6/30/2014	REVISED - 11/10/14 REVISED - REVISED - REVISED -
--	---	---	---	---

<b>STATE OF ILLINOIS</b> <b>DEPARTMENT OF TRANSPORTATION</b>		<b>WASHINGTON STREET FROM HARYAN WAY TO LAKE STREET</b> <b>PUMP STATION ELECTRICAL RISER AND DETAILS</b>		F.A.U. RTE. 187 SECTION 11-00121-11-BR COUNTY LAKE TOTAL SHEETS 496 SHEET NO. 148 61A63
SCALE: NTS	SHEET NO. PS 13 OF 15	STA. TO STA.	FED. ROAD DIST. NO.	ILLINOIS FED. AID PROJECT

PENTABLE = ...\\S:\E\PROJECTS\TRANSPEN\TEL

G:\L\CDOT\21150\_004\Drawings\shs\DrawElec For Conversion\5\_PStation\_ElecRiserDetails\_05.dgn

F.A.U. R.T.E.	SECTION	COUNTY	TOTAL SHEETS	SHEET NO.
187	08-00121-08-BR	LAKE	43	1
		ILLINOIS	CONTRACT NO. 61A63	

**INDEX OF SHEETS**

- SHEET 1 - COVER SHEET
- SHEET 2 - PLAT OF HIGHWAYS - Washington Street
- SHEET 3 - PLAT OF HIGHWAYS - Washington Street
- SHEET 4 - PLAT OF HIGHWAYS - Washington Street
- SHEET 5 - PLAT OF HIGHWAYS - Washington Street

- SHEET 6 - PLAT OF HIGHWAYS - Washington Street
- SHEET 7 - PLAT OF HIGHWAYS - Washington Street
- SHEET 8 - PLAT OF HIGHWAYS - Washington Street
- SHEET 9 - PLAT OF HIGHWAYS - Washington Street
- SHEET 10 - PLAT OF HIGHWAYS - Washington Street

- SHEET 11 - PLAT OF HIGHWAYS - Washington Street
- SHEET 12 - PLAT OF HIGHWAYS - Washington Street
- SHEET 13 - PLAT OF HIGHWAYS - Washington Street
- SHEET 14 - PLAT OF HIGHWAYS - Washington Street
- SHEET 15 - PLAT OF HIGHWAYS - Washington Street
- SHEET 16 - PLAT OF HIGHWAYS - Washington Street
- SHEET 17 - PLAT OF HIGHWAYS - Washington Street
- SHEET 18 - PLAT OF HIGHWAYS - Washington Street
- SHEET 19 - PLAT OF HIGHWAYS - Washington Street
- SHEET 20 - PLAT OF HIGHWAYS - Washington Street

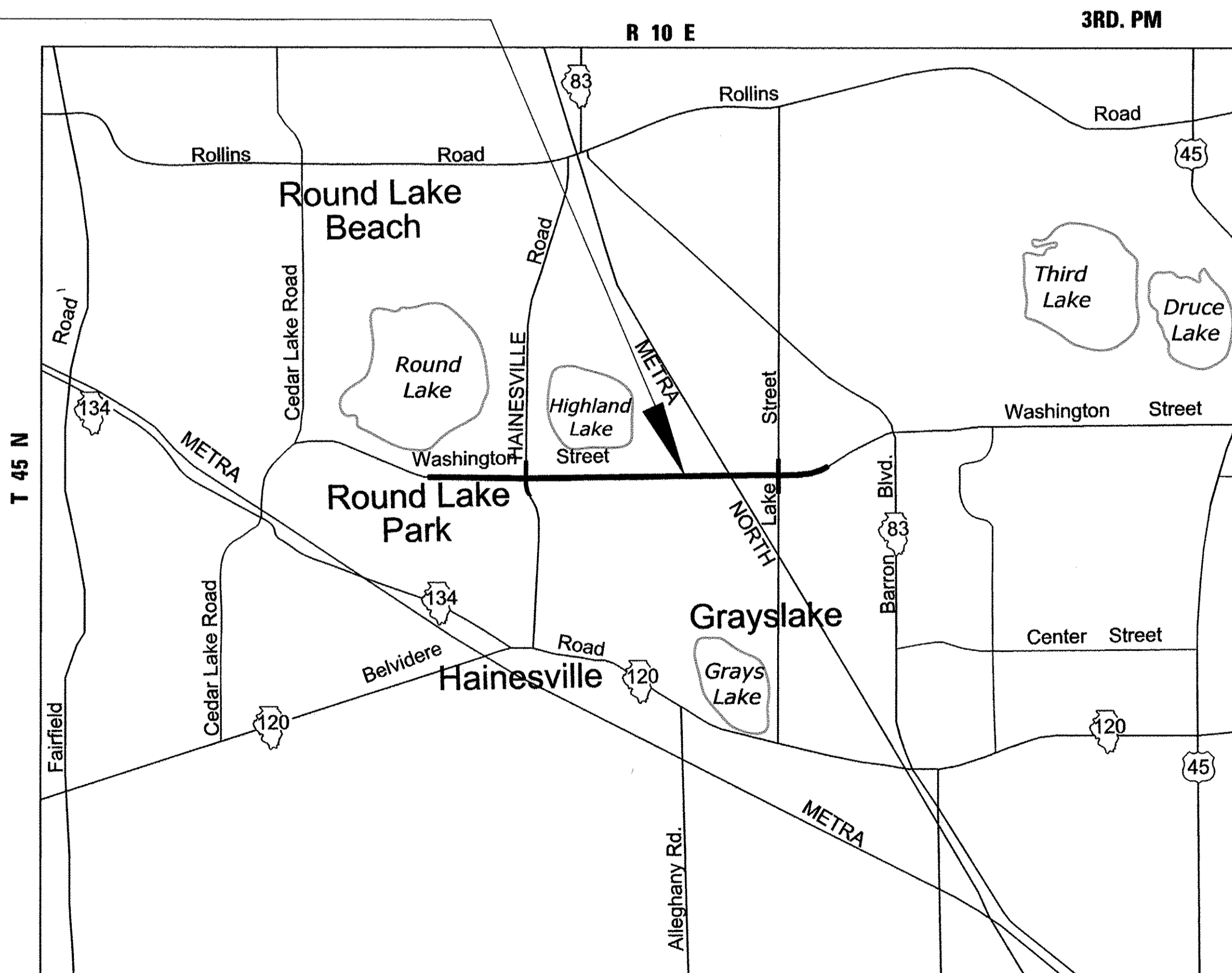
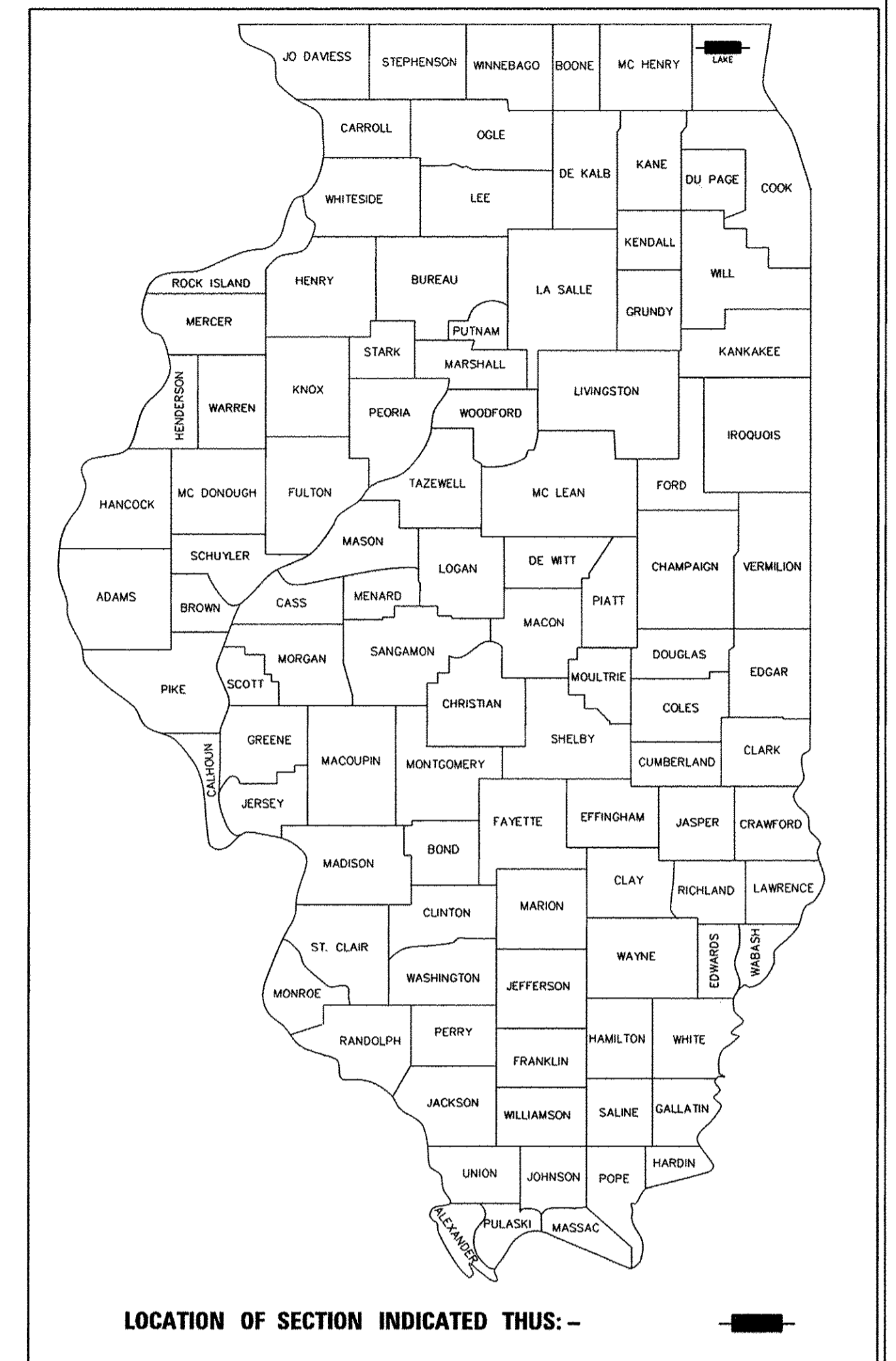
- SHEET 21 - PLAT OF HIGHWAYS - Washington Street
  - SHEET 22 - PLAT OF HIGHWAYS - Washington Street
  - SHEET 23 - PLAT OF HIGHWAYS - Hainesville Road
  - SHEET 24 - PLAT OF HIGHWAYS - Hainesville Road
  - SHEET 25 - PLAT OF HIGHWAYS - Hainesville Road
  - SHEET 26 - PLAT OF HIGHWAYS - Hainesville Road
  - SHEET 27 - PLAT OF HIGHWAYS - Lake Street
  - SHEET 28 - PLAT OF HIGHWAYS - Lake Street
  - SHEET 29 - PLAT OF HIGHWAYS - Lake Street
  - SHEET 30 - PLAT OF HIGHWAYS - Lake Street
- SHEET 31 - PLAT OF HIGHWAYS - Lake Street
  - SHEET 32 - PLAT OF HIGHWAYS - Grayslake Park Dist.
  - SHEET 33 - PLAT OF HIGHWAYS - Metra North
  - SHEET 34 - PLAT OF HIGHWAYS - Metra North
  - SHEET 35 - PLAT OF HIGHWAYS - Metra North
  - SHEET 36 - PLAT OF HIGHWAYS - Metra North
  - SHEET 37 - ALIGNMENT, TIES, AND BENCHMARKS
  - SHEET 38 - ALIGNMENT, TIES, AND BENCHMARKS
  - SHEET 39 - ALIGNMENT, TIES, AND BENCHMARKS
  - SHEET 40 - ALIGNMENT, TIES, AND BENCHMARKS
  - SHEET 41 - TOTAL HOLDINGS - PARCELS 0001 & 0001TE
  - SHEET 42 - TOTAL HOLDINGS - PARCEL 0061 TE
  - SHEET 43 - TOTAL HOLDINGS - PARCELS 0060, 0060TE, 0063, 0063TE, 0064-A, 0064-B, 0064-PE, 0064-TE1 & 0064-TE2

# STATE OF ILLINOIS DEPARTMENT OF TRANSPORTATION DIVISION OF HIGHWAYS

## RIGHT-OF-WAY PLATS FOR PROPOSED FEDERAL AID HIGHWAY

**F.A.U. ROUTE 187 (WASHINGTON STREET)  
F.A.U. ROUTE 193 (HAINESVILLE ROAD)  
F.A.U. ROUTE 195 (LAKE STREET)  
SECTION 08-00121-08-BR  
SECTION 01-00121-10-WR  
PROJECT CMM-9003(923)  
JOB C-91-181-12  
LAKE COUNTY**

**PROJECT LOCATION  
WASHINGTON STREET  
BEGIN IMPROVEMENT  
AT STA. 42+51.70  
END IMPROVEMENT  
AT STA. 143+59.92**



REVISION	
DATE	DESCRIPTION
6-29-11	CNTY REV. 6-29-11
7-15-11	ROW REVISIONS
9-14-11	COUNTY REVISIONS
10-14-11	IDOT REVISIONS
11-18-11	IDOT REVISIONS
2-03-12	IDOT REVISIONS
2-14-12	IDOT REVISIONS
6-5-12	TOTAL HOLD. 0060
12-13-12	LEGAL + TABLE 0060
12-18-12	38TE REM. 38+39 REV.
9-9-13	CN, JAWA, 0001, 0010
9-23-13	0010 REMOVED
11-26-13	65TE REM. SIG. BLOCK
2-27-14	66(CLIP), 66TE REV
4-8-14	SE-X LAKE EX. EASE
5-6-14	0066 CHG. TO 0066PE
7-8-14	0066PE REMOVED
8-1-14	0052 TAKE REV.
9-23-14	LCDOT ROW DEDICAT.
10-31-14	0066PE ADDED

**PROJECT LOCATED IN  
THE VILLAGES OF GRAYSLAKE,  
HAINESVILLE, ROUND LAKE PARK,  
AND AVON TOWNSHIP**

**J.U.L.I.E.  
JOINT UTILITY LOCATION INFORMATION  
FOR EXCAVATION  
1-800-892-0123 OR 811**

**MAP SCALE: NTS**  
**LOCATION MAP**  
WASHINGTON STREET GROSS AND NET LENGTH = 10108 FT. = 1.91 MILE

PART OF SECTION 21, 22, 23, 26, 27 & 28, T45 N, R 10 E, OF THE 3RD P.M. - LAKE COUNTY, ILLINOIS

**CONTRACT NO. 61A63**

**BL Bollinger, Lach & Associates, Inc.**  
333 PIERCE ROAD SUITE 200 ITASCA, IL 60143  
P:(630) 438 6400 F:(630) 438 6444 www.bollingerlach.com  
ITASCA • CHICAGO • LAKE GENEVA • SOUTH BEND • INDIANAPOLIS

STATE OF ILLINOIS  
DEPARTMENT OF TRANSPORTATION  
DIVISION OF HIGHWAYS

APPROVED \_\_\_\_\_ 20 \_\_\_\_\_

COUNTY OF LAKE, COUNTY ENGINEER

STATE OF ILLINOIS  
DEPARTMENT OF TRANSPORTATION  
DIVISION OF HIGHWAYS

PASSED \_\_\_\_\_ 20 \_\_\_\_\_

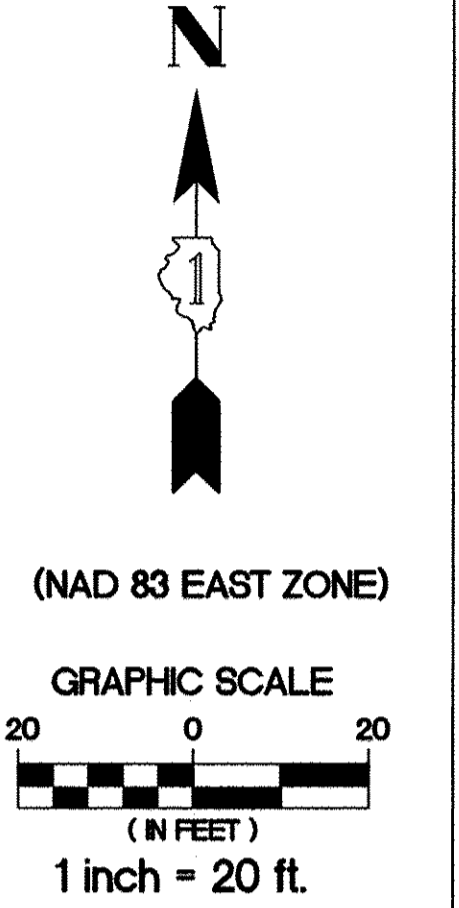
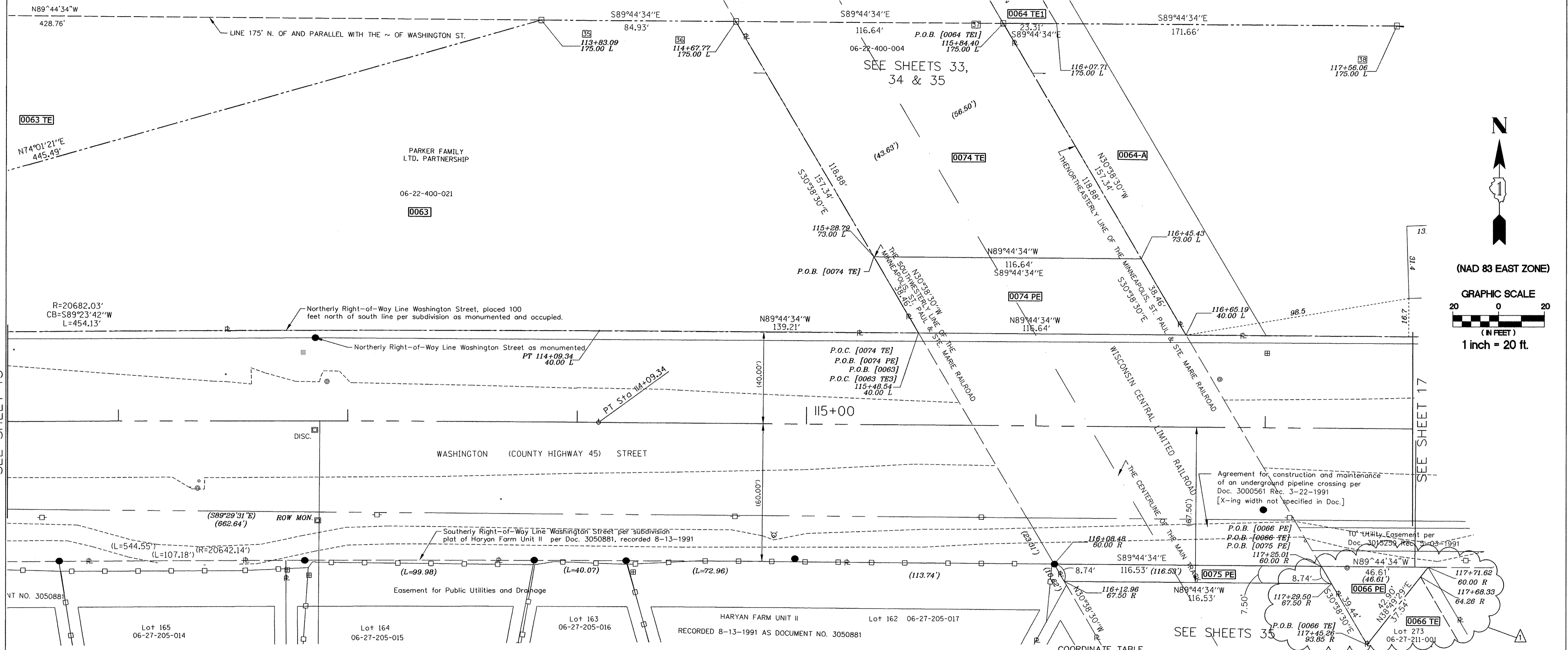
DISTRICT ONE ENGINEER OF LOCAL ROADS & STREETS

RELEASING FOR BID  
BASED ON LIMITED  
REVIEW \_\_\_\_\_ 20 \_\_\_\_\_

DEPUTY DIRECTOR OF HIGHWAYS, REGION ONE ENGINEER

**PRINTED BY THE AUTHORITY  
OF THE STATE OF ILLINOIS**

PART OF THE SE 1/4 SEC. 22, TWP. 45 N., R. 10 E. OF THE 3RD P.M., IN LAKE COUNTY, ILLINOIS.  
 PART OF THE NE 1/4 SEC. 27, TWP. 45 N., R. 10 E. OF THE 3RD P.M., IN LAKE COUNTY, ILLINOIS.



SEE SHEET 15

SEE SHEET 17

SEE SHEETS 33, 34 & 35

**LEGEND**

- PROPOSED RIGHT OF WAY LINE
- PROPOSED EASEMENT
- EXISTING RIGHT OF WAY LINE
- CENTERLINE
- PLATTED LOT LINES
- PROPERTY (DEED) LINE
- APL APPARENT PROPERTY LINE
- SECTION LINE
- 129.324 MEASURED DIMENSION
- 129.324 (COMP) COMPUTED DIMENSION
- (129.324) RECORDED DIMENSION
- + CUT CROSS FOUND OR SET
- IRON PIPE OR IRON ROD
- RESET PIPE OR ROD TO ORIGINAL POSITION.
- T1(B1) THESE STAKES REFERENCE FOUND OR SET MONUMENTATION.
- T2(B2) SET 5/8 INCH IRON ROD TO TIE FOUND IRON STAKE IDENTIFIED BY COLORED PLASTIC CAP BEARING SURVEYORS REGISTRATION NUMBER.
- T3(B3)
- T1 DENOTES TIE POINT NO. 1. SET IRON ROD FLUSH WITH GROUND SURFACE.
- (B1) DENOTES TIE POINT NO. 1. SET IRON ROD 20" BELOW GROUND SURFACE.
- DIVISION OF HIGHWAYS RIGHT OF WAY SURVEY MARKER PROPOSED TO BE SET.
- STAKING OF PROPOSED RIGHT OF WAY. SET DIVISION OF HIGHWAYS SURVEY MARKER TO MONUMENT THE POSITION SHOWN. IDENTIFIED BY INSCRIPTION DATA AND SURVEYORS REGISTRATION NUMBER.
- PERMANENT SURVEY MARKER, I.D.O.T. STANDARD 2135 (TO BE SET BY OTHERS)

NOTE: COORDINATES SHOWN ARE NAD83 ILLINOIS STATE PLANE EAST ZONE

**SCHEDULE OF TIES**

POINT NUMBER	TIE POINT	TIE DISTANCE
35	T1	
	T2	
	T3	
36	T1	
	T2	
	T3	
37	T1	
	T2	
	T3	
38	T1	
	T2	
	T3	

**COORDINATE TABLE**

STATION	OFFSET	COORDINATES
112+ 00.00	- 00.00' LT.	2,072,850.34N - 1,060,831.53E
112+ 00.00	- 60.85' RT.	2,072,789.48N - 1,060,831.96E
112+ 00.00	- 63.85' RT.	2,072,786.48N - 1,060,831.99E
112+ 73.06	- 60.66' RT.	2,072,790.06N - 1,060,904.78E
112+ 73.06	- 63.66' RT.	2,072,787.06N - 1,060,904.79E
113+ 83.09	- 175.00' LT.	2,073,025.75N - 1,061,015.14E
114+ 09.34	- 00.00' LT.	2,072,850.65N - 1,061,040.86E
114+ 09.34	- 40.00' LT.	2,072,890.45N - 1,061,041.03E
114+ 67.77	- 175.00' LT.	2,073,025.37N - 1,061,100.04E
115+ 28.79	- 73.00' LT.	2,072,923.10N - 1,061,160.64E
115+ 48.54	- 40.00' LT.	2,072,890.00N - 1,061,180.22E
115+ 84.40	- 170.00' LT.	2,073,024.85N - 1,061,216.69E
116+ 07.71	- 170.00' LT.	2,073,024.74N - 1,061,239.99E
116+ 08.48	- 60.00' RT.	2,072,789.74N - 1,061,239.73E
116+ 12.96	- 67.50' RT.	2,072,782.22N - 1,061,244.18E

**COORDINATE TABLE**

STATION	OFFSET	COORDINATES
116+ 45.43	- 73.00' LT.	2,072,922.58N - 1,061,277.28E
116+ 65.19	- 40.00' LT.	2,072,889.48N - 1,061,296.88E
117+ 00.00	- 00.00' LT.	2,072,849.34N - 1,061,331.52E
117+ 25.01	- 60.00' RT.	2,072,789.22N - 1,061,356.26E
117+ 25.50	- 67.50' RT.	2,072,781.70N - 1,061,360.71E
117+ 45.26	- 93.85' RT.	2,072,755.29N - 1,061,376.35E
117+ 56.06	- 170.00' LT.	2,073,024.08N - 1,061,388.31E
117+ 68.33	- 64.26' RT.	2,072,784.80N - 1,061,399.55E
117+ 71.62	- 60.00' RT.	2,072,789.01N - 1,061,402.87E

PARCEL NUMBER	OWNER	TOTAL HOLDING ACRES	PART TAKEN/USED ACRES	REMAINDER ACRES	PURPOSE	PERMANENT TAX INDEX NUMBER	ACQUIRED BY DOCUMENT
0063	SEE SHEET 15						
0064-A 0064 TE1	The Parker Family Ltd. Partnership	66.779	2.090 0.456	Sheet 18 see re-cap	R.O.W. Temp. Ease.	06-22-400-021	
0066 PE	Haryan Farm Neighborhood Association	2.103	0.018	2.085	Perm. Ease.	06-27-211-001	
0066 TE	Haryan Farm Neighborhood Association	2.103	0.435	2.103	Temp. Ease.	06-27-211-001	
0074 PE	Wisconsin Central Ltd.		0.087		Perm. Ease.	06-22-400-004	
0074 TE	Wisconsin Central Ltd.		0.273		Temp. Ease.	06-22-400-004	
0075 PE	Wisconsin Central Ltd.		0.020		Perm. Ease.	06-27-200-018	

STATE OF ILLINOIS )  
 ) SS  
 COUNTY OF LAKE )

I, PAULA J. TRIGG, COUNTY ENGINEER OF THE COUNTY AFORESAID, DO HEREBY CERTIFY THAT THE PLAT HEREON IS A TRUE AND CORRECT REPRESENTATION OF THE SURVEY MADE UNDER MY DIRECTION OF PART OF FAU 187, FAU 193 & FAU 195 IN SAID COUNTY.

DATED THIS \_\_\_\_\_ DAY OF \_\_\_\_\_, A.D. 20\_\_\_\_

STATE OF ILLINOIS )  
 ) SS  
 COUNTY OF DUPAGE )

THIS IS TO CERTIFY THAT WE, BOLLINGER LACH & ASSOCIATES, INC., AN ILLINOIS PROFESSIONAL DESIGN FIRM, NUMBER 184-001129, HAVE SURVEYED THE PLAT OF HIGHWAYS SHOWN HEREON IN SECTIONS 21, 22, 27 AND 28, TOWNSHIP 45 NORTH, RANGE 10 EAST OF THE THIRD PRINCIPAL MERIDIAN, LAKE COUNTY, THAT THE SURVEY IS TRUE AND COMPLETE AS SHOWN TO THE BEST OF MY KNOWLEDGE AND BELIEF, THAT THE PLAT CORRECTLY REPRESENTS SAID SURVEY, THAT ALL MONUMENTS FOUND AND ESTABLISHED ARE OF PERMANENT QUALITY AND OCCUPY THE POSITIONS SHOWN THEREON AND THAT THE MONUMENTS ARE SUFFICIENT TO ENABLE THE POSITIONS TO BE RETRACED, MADE FOR THE DIVISION OF TRANSPORTATION, STATE OF ILLINOIS.

DATED AT ITASCA, ILLINOIS THIS \_\_\_\_\_ DAY OF \_\_\_\_\_, 20 \_\_\_\_ A.D.

ILLINOIS PROFESSIONAL LAND SURVEYOR NO.2257  
 LICENSE EXPIRATION DATE: 11/30/2014

THIS PROFESSIONAL SERVICE CONFORMS TO THE CURRENT ILLINOIS MINIMUM STANDARDS FOR A BOUNDARY SURVEY.

RECORDED ON:

**REVISION**

DATE	DESCRIPTION
6-29-11	C'NTY REV. 6-29-11
7-15-11	ROW REVISIONS
9-14-11	COUNTY REVISIONS
10-14-11	IDOT REVISIONS
11-18-11	IDOT REVISIONS
2-03-12	IDOT REVISIONS
2-14-12	IDOT REVISIONS
9-9-13	CN, JAWA EASE.
11-26-13	65TE REM. SIG. BLOCK
10-31-14	0066PE ADDED
2-27-14	66(CLIP), 66TE REV

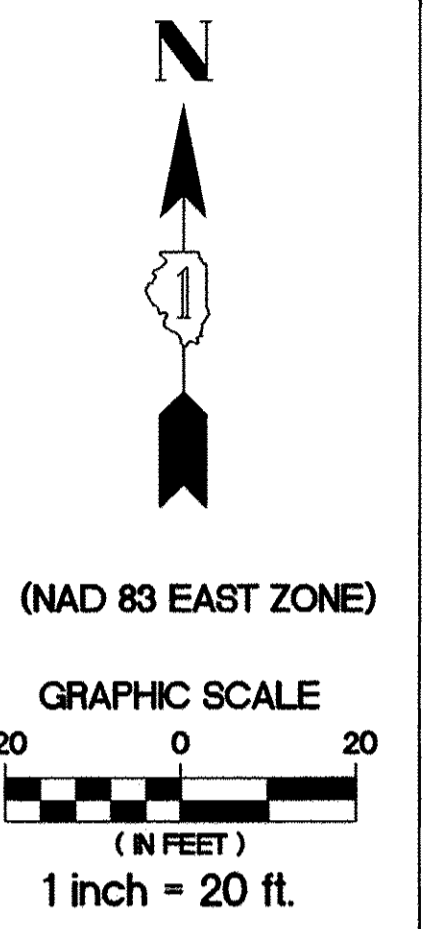
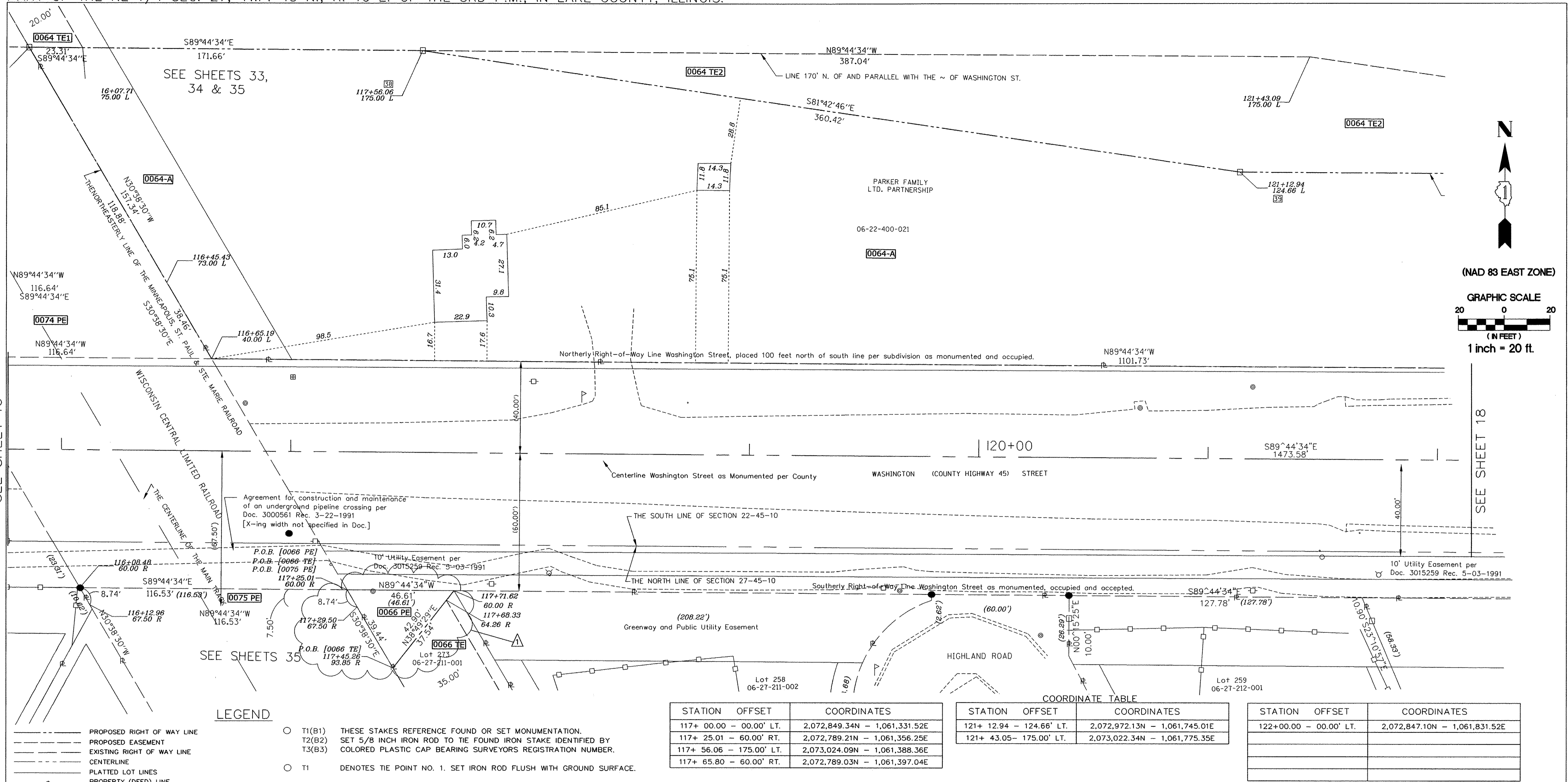
**Bollinger, Lach & Associates, Inc.**  
 333 PIERCE ROAD, SUITE 200 - ITASCA, IL 60143  
 P:(630) 438 6400 F:(630) 438 6444 www.bollingerlach.com  
 ITASCA • CHICAGO • LAKE GENEVA • SOUTH BEND • INDIANAPOLIS

STATE OF ILLINOIS  
 DEPARTMENT OF TRANSPORTATION  
 DIVISION OF HIGHWAYS  
 PLAT OF HIGHWAYS

F.A.U. ROUTE 187 (WASHINGTON STREET)  
 SECTION. 08-00121-08-BR  
 01-00121-10-WR  
 JOB NO. R-91-181-12  
 STA. 111+50 TO STA. 117+50  
 DRAWN: TMS CHECKED: JDB  
 SCALE: 1"=20' PLAT 16 OF 43

AS DOCUMENT NO.:

PART OF THE SE 1/4 SEC. 22, TWP. 45 N., R. 10 E. OF THE 3RD P.M., IN LAKE COUNTY, ILLINOIS.  
 PART OF THE NE 1/4 SEC. 27, TWP. 45 N., R. 10 E. OF THE 3RD P.M., IN LAKE COUNTY, ILLINOIS.



SEE SHEET 16

SEE SHEET 18

**LEGEND**

- PROPOSED RIGHT OF WAY LINE
- - - PROPOSED EASEMENT
- EXISTING RIGHT OF WAY LINE
- CENTERLINE
- PLATTED LOT LINES
- PROPERTY (DEED) LINE
- APPARENT PROPERTY LINE
- SECTION LINE
- 129.324 MEASURED DIMENSION
- 129.324 (COMP) COMPUTED DIMENSION
- (129.324) RECORDED DIMENSION
- + CUT CROSS FOUND OR SET
- IRON PIPE OR IRON ROD
- RESET PIPE OR ROD TO ORIGINAL POSITION.
- T1(B1) THESE STAKES REFERENCE FOUND OR SET MONUMENTATION.
- T2(B2) SET 5/8 INCH IRON ROD TO TIE FOUND IRON STAKE IDENTIFIED BY COLORED PLASTIC CAP BEARING SURVEYORS REGISTRATION NUMBER.
- T3(B3)
- T1 DENOTES TIE POINT NO. 1. SET IRON ROD FLUSH WITH GROUND SURFACE.
- (B1) DENOTES TIE POINT NO. 1. SET IRON ROD 20" BELOW GROUND SURFACE.
- DIVISION OF HIGHWAYS RIGHT OF WAY SURVEY MARKER PROPOSED TO BE SET.
- STAKING OF PROPOSED RIGHT OF WAY. SET DIVISION OF HIGHWAYS SURVEY MARKER TO MONUMENT THE POSITION SHOWN. IDENTIFIED BY INSCRIPTION DATA AND SURVEYORS REGISTRATION NUMBER.
- PERMANENT SURVEY MARKER, I.D.O.T. STANDARD 2135 (TO BE SET BY OTHERS)

STATION	OFFSET	COORDINATES
117+ 00.00	- 00.00' LT.	2,072,849.34N - 1,061,331.52E
117+ 25.01	- 60.00' RT.	2,072,789.21N - 1,061,356.25E
117+ 56.06	- 175.00' LT.	2,073,024.09N - 1,061,388.36E
117+ 65.80	- 60.00' RT.	2,072,789.03N - 1,061,397.04E

STATION	OFFSET	COORDINATES
121+ 12.94	- 124.66' LT.	2,072,972.13N - 1,061,745.01E
121+ 43.05	- 175.00' LT.	2,073,022.34N - 1,061,775.35E

STATION	OFFSET	COORDINATES
122+00.00	- 00.00' LT.	2,072,847.10N - 1,061,831.52E

NOTE: COORDINATES SHOWN ARE NAD83 ILLINOIS STATE PLANE EAST ZONE

SCHEDULE OF TIES		
POINT NUMBER	TIE POINT	TIE DISTANCE
38	T1	
	T2	
	T3	
39	T1	
	T2	
	T3	

STATE OF ILLINOIS )  
 )SS  
 COUNTY OF DUPAGE )

THIS IS TO CERTIFY THAT WE, BOLLINGER LACH & ASSOCIATES, INC., AN ILLINOIS PROFESSIONAL DESIGN FIRM, NUMBER 184-001129, HAVE SURVEYED THE PLAT OF HIGHWAYS SHOWN HEREON IN SECTIONS 21, 22, 27 AND 28, TOWNSHIP 45 NORTH, RANGE 10 EAST OF THE THIRD PRINCIPAL MERIDIAN, LAKE COUNTY, THAT THE SURVEY IS TRUE AND COMPLETE AS SHOWN TO THE BEST OF MY KNOWLEDGE AND BELIEF, THAT THE PLAT CORRECTLY REPRESENTS SAID SURVEY, THAT ALL MONUMENTS FOUND AND ESTABLISHED ARE OF PERMANENT QUALITY AND OCCUPY THE POSITIONS SHOWN THEREON AND THAT THE MONUMENTS ARE SUFFICIENT TO ENABLE THE SURVEY TO BE RETRACED, MADE FOR THE DIVISION OF TRANSPORTATION, STATE OF ILLINOIS.

DATED AT ITASCA, ILLINOIS THIS \_\_\_\_\_ DAY OF \_\_\_\_\_, 20\_\_\_\_ A.D.

ILLINOIS PROFESSIONAL LAND SURVEYOR NO.2257  
 LICENSE EXPIRATION DATE: 11/30/2014

THIS PROFESSIONAL SERVICE CONFORMS TO THE CURRENT ILLINOIS MINIMUM STANDARDS FOR A BOUNDARY SURVEY.

5-6-14	0066 CHG. TO 0066PE	9-09-13	CN, JAWA EASE.
7-8-14	0066PE REMOVED	11-26-13	SIG. BLOCK
10-31-14	0066PE ADDED	2-27-14	66(CLIP),66TE REV

REVISION	
DATE	DESCRIPTION
6-29-11	C'NTY REV. 6-29-11
7-15-11	ROW REVISIONS
9-14-11	COUNTY REVISIONS
10-14-11	IDOT REVISIONS
11-18-11	IDOT REVISIONS
2-03-12	IDOT REVISIONS
2-14-12	IDOT REVISIONS
9-09-13	CN, JAWA EASE.
11-26-13	SIG. BLOCK
2-27-14	66(CLIP),66TE REV

**Bollinger, Lach & Associates, Inc.**  
 333 PIERCE ROAD, SUITE 200 - ITASCA, IL 60143  
 P(630) 438 6400 F(630) 438 6444 www.bollingerlach.com  
 ITASCA • CHICAGO • LAKE GENEVA • SOUTH BEND • INDIANAPOLIS

STATE OF ILLINOIS  
 DEPARTMENT OF TRANSPORTATION  
 DIVISION OF HIGHWAYS  
 PLAT OF HIGHWAYS  
 F.A.U. ROUTE 187 (WASHINGTON STREET)  
 SECTION. 08-00121-08-BR  
 01-00121-10-WR  
 JOB NO. R-91-181-12  
 STA. 115+75 TO STA. 122+25  
 DRAWN: TMS CHECKED: JDB  
 SCALE: 1"=20' PLAT 17 OF 43

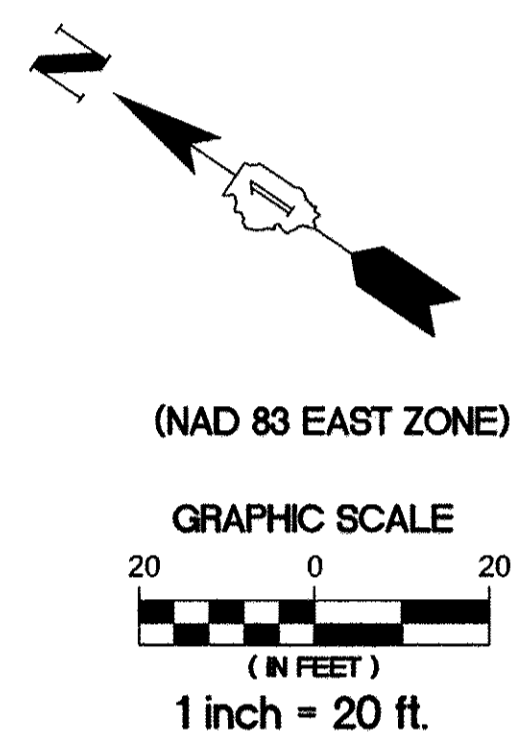
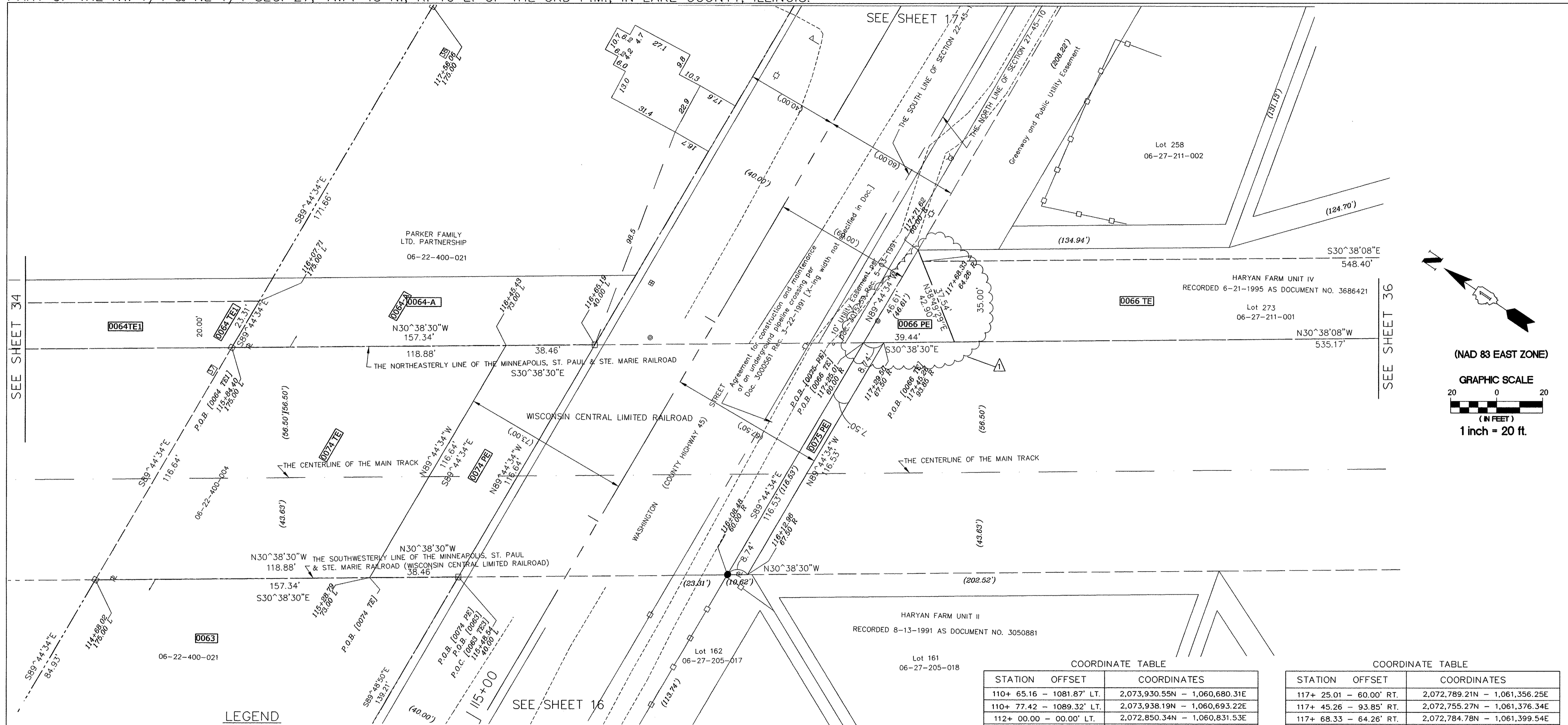
PARCEL NUMBER	OWNER	TOTAL HOLDING ACRES	PART TAKEN/USED ACRES	REMAINDER ACRES	PURPOSE	PERMANENT TAX INDEX NUMBER	ACQUIRED BY DOCUMENT
0066 TB 0066 PE	SEE SHEET 16						
0064-A	The Parker Family Ltd. Partnership SEE SHEET 14, 16 & 17	66.779	2.090	Sheet 18 see re-cap	R.O.W.	06-22-400-021	
0064 TE1			0.456		Temp. Ease.	06-22-400-021	
0064 TE2			0.447			Temp. Ease.	06-22-400-021

STATE OF ILLINOIS )  
 )SS  
 COUNTY OF LAKE )

I, PAULA J. TRIGG, COUNTY ENGINEER OF THE COUNTY AFORESAID, DO HEREBY CERTIFY THAT THE PLAT HEREON IS A TRUE AND CORRECT REPRESENTATION OF THE SURVEY MADE UNDER MY DIRECTION OF PART OF FAU 187, FAU 193 & FAU 195 IN SAID COUNTY.

DATED THIS \_\_\_\_\_ DAY OF \_\_\_\_\_, A.D. 20\_\_\_\_

PART OF THE SW 1/4 & SE 1/4 SEC. 22, TWP. 45 N., R. 10 E. OF THE 3RD P.M., IN LAKE COUNTY, ILLINOIS.  
 PART OF THE NW 1/4 & NE 1/4 SEC. 27, TWP. 45 N., R. 10 E. OF THE 3RD P.M., IN LAKE COUNTY, ILLINOIS.



**LEGEND**

- PROPOSED RIGHT OF WAY LINE
- - - PROPOSED EASEMENT
- EXISTING RIGHT OF WAY LINE
- CENTERLINE
- PLATTED LOT LINES
- PROPERTY (DEED) LINE
- APPARENT PROPERTY LINE
- SECTION LINE
- 129.324 MEASURED DIMENSION
- 129.324 (COMP) COMPUTED DIMENSION
- (129.324) RECORDED DIMENSION
- + CUT CROSS FOUND OR SET
- IRON PIPE OR IRON ROD
- RESET PIPE OR ROD TO ORIGINAL POSITION.
- T1(B1) THESE STAKES REFERENCE FOUND OR SET MONUMENTATION.
- T2(B2) SET 5/8 INCH IRON ROD TO TIE FOUND IRON STAKE IDENTIFIED BY
- T3(B3) COLORED PLASTIC CAP BEARING SURVEYORS REGISTRATION NUMBER.
- T1 DENOTES TIE POINT NO. 1. SET IRON ROD FLUSH WITH GROUND SURFACE.
- (B1) DENOTES TIE POINT NO. 1. SET IRON ROD 20" BELOW GROUND SURFACE.
- DIVISION OF HIGHWAYS RIGHT OF WAY SURVEY MARKER PROPOSED TO BE SET.
- STAKING OF PROPOSED RIGHT OF WAY. SET DIVISION OF HIGHWAYS SURVEY MARKER TO MONUMENT THE POSITION SHOWN. IDENTIFIED BY INSCRIPTION DATA AND SURVEYORS REGISTRATION NUMBER.
- PERMANENT SURVEY MARKER, I.D.O.T. STANDARD 2135 (TO BE SET BY OTHERS)

NOTE: COORDINATES SHOWN ARE NAD83 ILLINOIS STATE PLANE EAST ZONE

COORDINATE TABLE

STATION	OFFSET	COORDINATES
110+	65.16 - 1081.87' LT.	2,073,930.55N - 1,060,680.31E
110+	77.42 - 1089.32' LT.	2,073,938.19N - 1,060,693.22E
112+	00.00 - 00.00' LT.	2,072,850.34N - 1,060,831.53E
112+	20.51 - 828.38' LT.	2,073,678.83N - 1,060,846.83E
112+	24.63 - 830.90 LT.	2,073,681.37N - 1,060,851.12E
115+	90.37 - 165.00' LT.	2,073,014.83N - 1,061,222.62E
117+	00.00 - 00.00' LT.	2,072,849.34N - 1,061,331.52E

COORDINATE TABLE

STATION	OFFSET	COORDINATES
117+	25.01 - 60.00' RT.	2,072,789.21N - 1,061,356.25E
117+	45.26 - 93.85' RT.	2,072,755.27N - 1,061,376.34E
117+	68.33 - 64.26' RT.	2,072,784.78N - 1,061,399.54E
117+	71.62 - 60.00' RT.	2,072,788.99N - 1,061,402.86E
120+	20.03 - 553.09' RT.	2,072,294.80N - 1,061,649.06E
120+	49.89 - 534.83' RT.	2,072,312.93N - 1,061,679.00E

STATE OF ILLINOIS )  
 COUNTY OF DUPAGE )

THIS IS TO CERTIFY THAT WE, BOLLINGER LACH & ASSOCIATES, INC., AN ILLINOIS PROFESSIONAL DESIGN FIRM, NUMBER 184-00129, HAVE SURVEYED THE PLAT OF HIGHWAYS SHOWN HEREON IN SECTIONS 21, 22, 27 AND 28, TOWNSHIP 45 NORTH, RANGE 10 EAST OF THE THIRD PRINCIPAL MERIDIAN, LAKE COUNTY, THAT THE SURVEY IS TRUE AND COMPLETE AS SHOWN TO THE BEST OF MY KNOWLEDGE AND BELIEF, THAT THE PLAT CORRECTLY REPRESENTS SAID SURVEY, THAT ALL MONUMENTS FOUND AND ESTABLISHED ARE OF PERMANENT QUALITY AND OCCUPY THE POSITIONS SHOWN THEREON AND THAT THE MONUMENTS ARE SUFFICIENT TO ENABLE THE SURVEY TO BE RETRACED, MADE FOR THE DIVISION OF TRANSPORTATION, STATE OF ILLINOIS.

DATED AT ITASCA, ILLINOIS THIS \_\_\_\_\_ DAY OF \_\_\_\_\_, 20\_\_\_\_ A.D.

ILLINOIS PROFESSIONAL LAND SURVEYOR NO.2257  
 LICENSE EXPIRATION DATE: 11/30/2014

THIS PROFESSIONAL SERVICE CONFORMS TO THE CURRENT ILLINOIS MINIMUM STANDARDS FOR A BOUNDARY SURVEY.

5-6-14	0066 CHG. TO 0066PE	9-9-13	CN,JAWA EASE.
7-8-14	0066PE REMOVED	11-26-13	SIG. BLOCK
10-31-14	0066PE ADDED	2-27-14	66(CLIP),66TE REV

REVISION

DATE	DESCRIPTION
6-29-11	C'NTY REV. 6-29-11
7-15-11	ROW REVISIONS
9-14-11	COUNTY REVISIONS
10-14-11	IDOT REVISIONS
11-18-11	IDOT REVISIONS
2-03-12	IDOT REVISIONS
2-14-12	IDOT REVISIONS
5-6-14	0066 CHG. TO 0066PE
7-8-14	0066PE REMOVED
10-31-14	0066PE ADDED

**Bollinger, Lach & Associates, Inc.**  
 333 PIERCE ROAD, SUITE 200 - ITASCA, IL 60143  
 P:(630) 438 6400 F:(630) 438 6444 www.bollingerlach.com  
 ITASCA • CHICAGO • LAKE GENEVA • SOUTH BEND • INDIANAPOLIS

STATE OF ILLINOIS  
 DEPARTMENT OF TRANSPORTATION  
 DIVISION OF HIGHWAYS  
 PLAT OF HIGHWAYS  
 F.A.U. ROUTE 187 (WASHINGTON STREET)  
 SECTION. 08-00121-08-BR  
 01-00121-10-WR  
 JOB NO. R-91-181-12  
 STA. 115+00 TO STA. 118+00  
 DRAWN: TMS CHECKED: JDB  
 SCALE: 1"=20' PLAT 35 OF 43

PARCEL NUMBER	OWNER	TOTAL HOLDING ACRES	PART TAKEN/USED ACRES	REMAINDER ACRES	PURPOSE	PERMANENT TAX INDEX NUMBER	ACQUIRED BY DOCUMENT
0063	SEE SHEETS 15 & 16						
0063 TE	SEE SHEETS 15 & 16						
0064-A	SEE SHEETS 16, 17, 18, 19 & 20						
0063	SEE SHEETS 16, 17, 18, 19 & 20						
0066 TE 0066 PE	SEE SHEETS 16, 17 & 38						

STATE OF ILLINOIS )  
 COUNTY OF LAKE )  
 I, PAULA J. TRIGG, COUNTY ENGINEER OF THE COUNTY AFORESAID, DO HEREBY CERTIFY THAT THE PLAT HEREON IS A TRUE AND CORRECT REPRESENTATION OF THE SURVEY MADE UNDER MY DIRECTION OF PART OF FAU 187, FAU 193 & FAU 195 IN SAID COUNTY.  
 DATED THIS \_\_\_\_\_ DAY OF \_\_\_\_\_, A.D., 20\_\_\_\_.