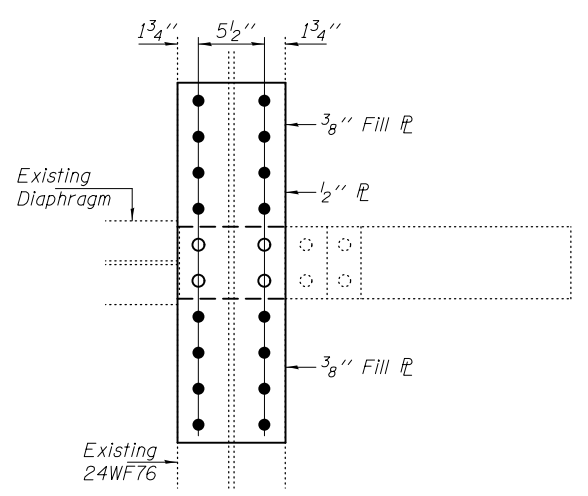
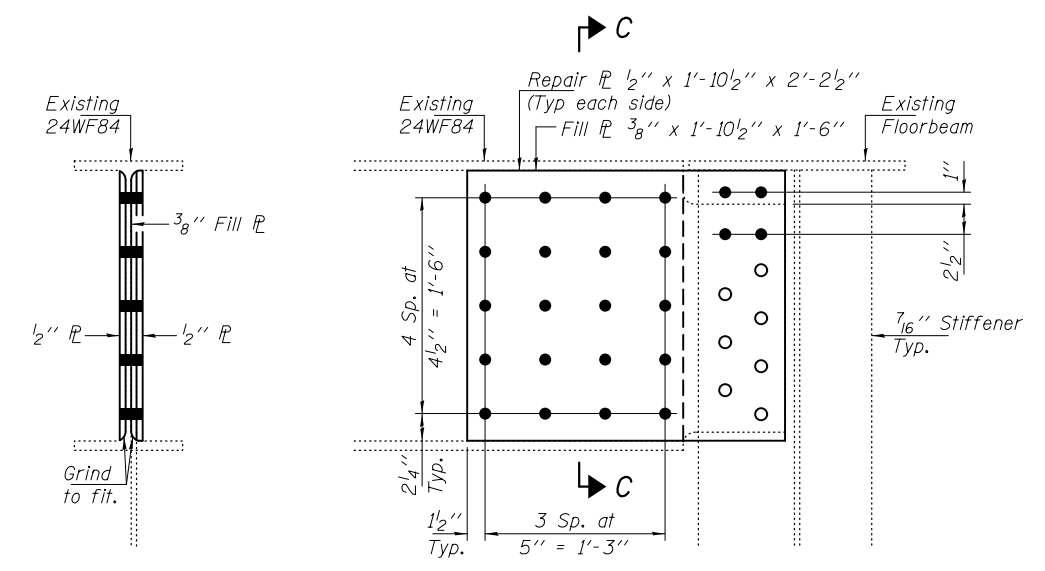


SECTION A-A

ELEVATION REPAIR 233



VIEW B-B



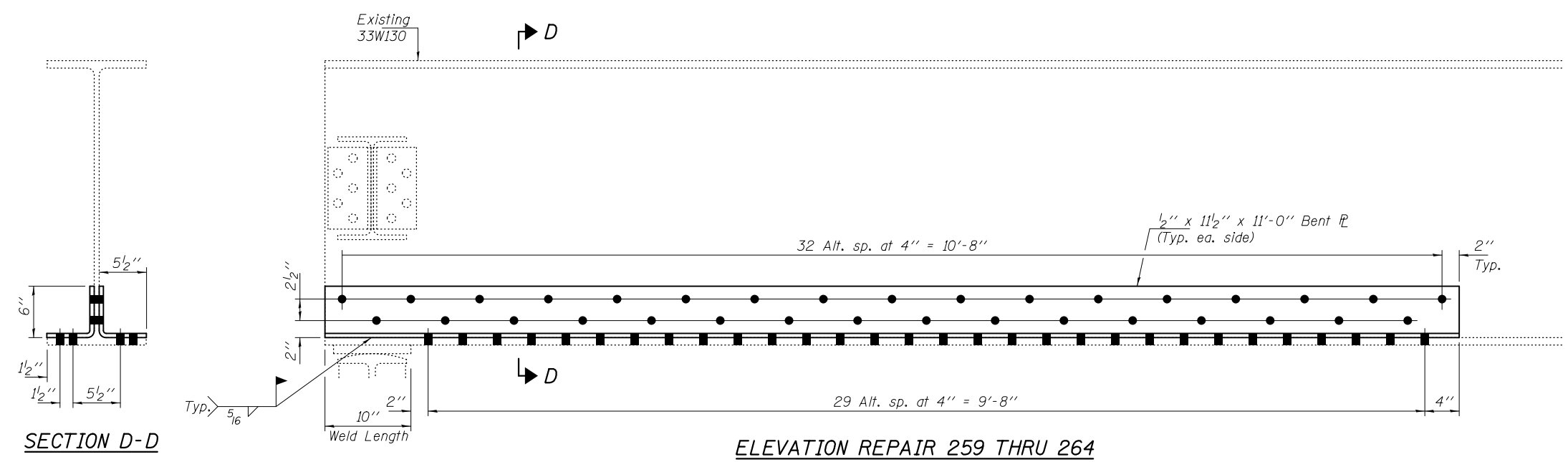
SECTION C-C

ELEVATION REPAIR 256

Note:  
Contractor must provide temporary support for stringer.

**BOLT HOLE LEGEND**

- - Use holes in new steel as template
- - Use holes in existing steel as template



SECTION D-D

ELEVATION REPAIR 259 THRU 264

DESIGNED - GGE	EXAMINED - <i>Timothy A. [Signature]</i>	DATE - OCTOBER 17, 2014	STATE OF ILLINOIS DEPARTMENT OF TRANSPORTATION		REPAIR 233, 256, 259 THRU 264 DETAILS SN 099-0056		F.A.I. RTE.	SECTION	COUNTY	TOTAL SHEETS	SHEET NO.
CHECKED - TLC	ACTING ENGINEER OF STRUCTURAL SERVICES						80	99-3-BR-2	WILL	57	18
DRAWN - Kyle M. Steffen/balva	PASSED - <i>Carl [Signature]</i>		SHEET NO. 15 OF 24 SHEETS		ILLINOIS FED. AID PROJECT		CONTRACT NO. 60Y64				
CHECKED - GGE TLC	ACTING ENGINEER OF BRIDGES AND STRUCTURES										