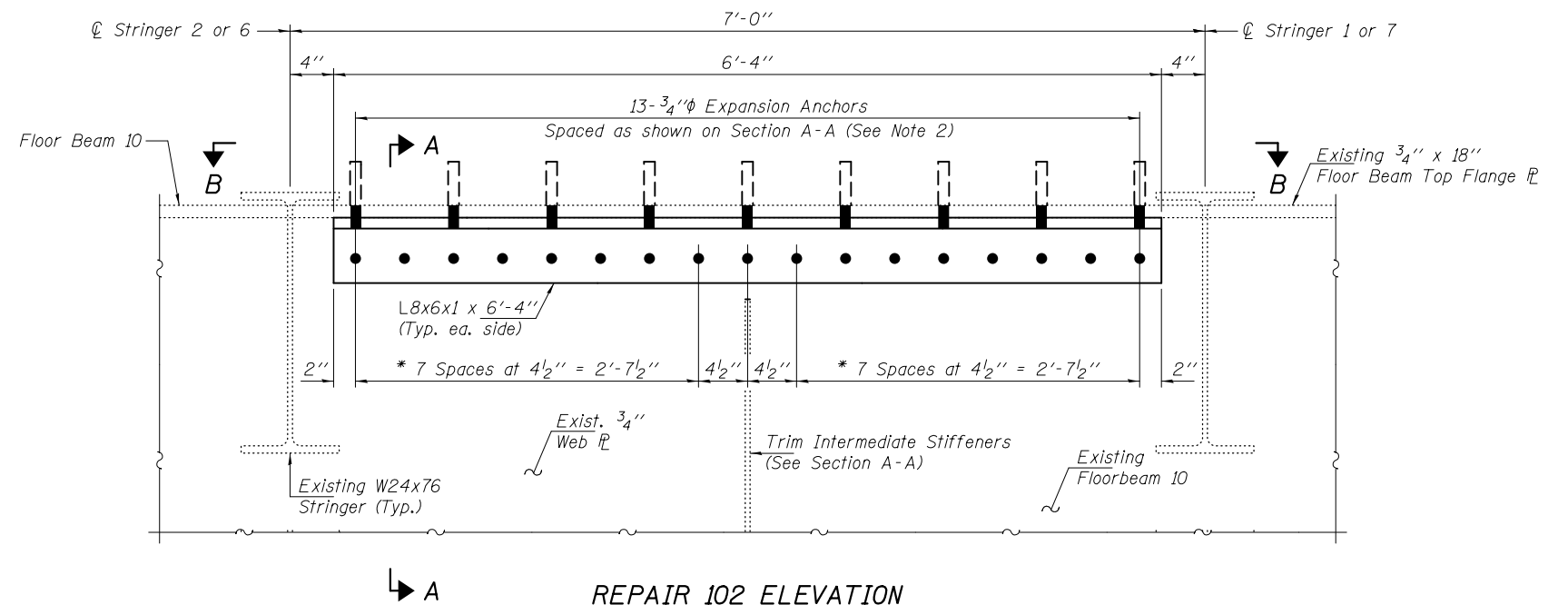


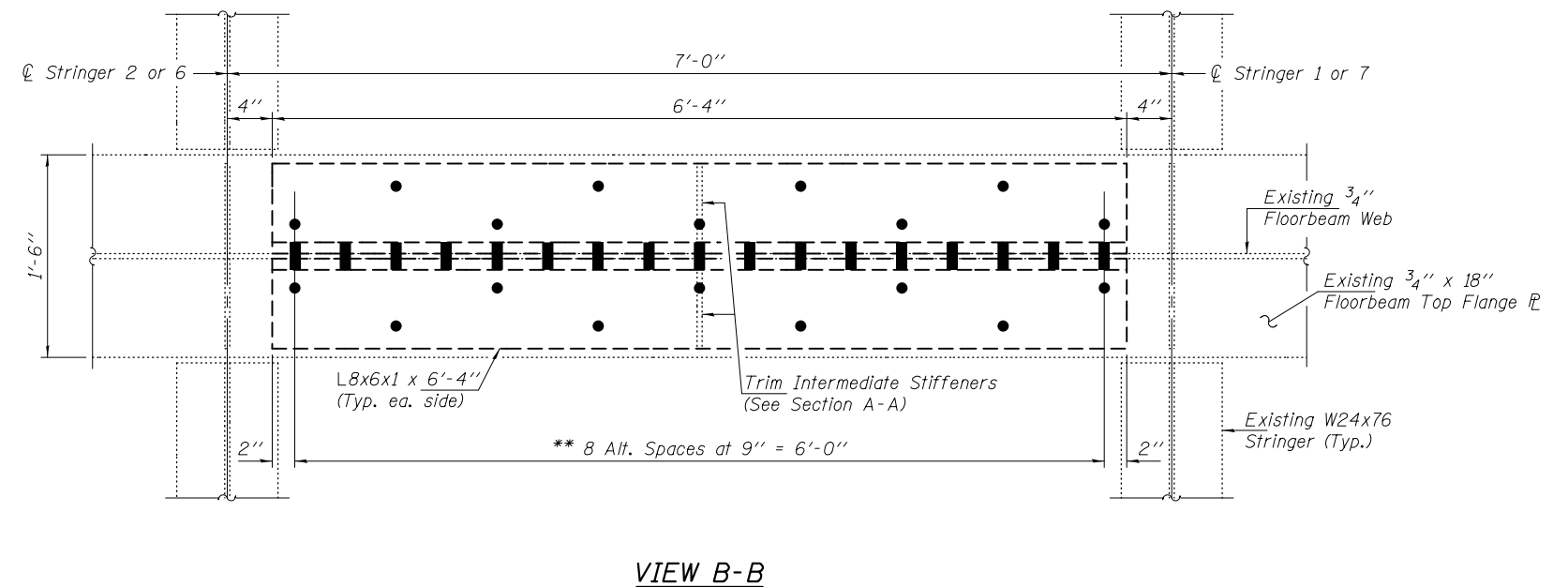
SECTION A-A



REPAIR 102 ELEVATION

NOTES

1. Remove and dispose of existing repair angles. Cut existing epoxy grouted threaded rods off flush. (Between stringers 6 & 7 only)
2. Field drill 1 3/16" hole 4" into existing concrete and install 3/4" expansion anchor bolts with min. pull out capacity of 1.5 kips. Expansion anchor bolts shall be carbon steel. Cost included in the cost of Structural Steel Repair.
3. Cost of field drilling included in the cost of Structural Steel Repair.
4. The repair angle and shape lengths shown are anticipated based on existing plan data. Longer repair angles and shapes may be required based on field conditions.
5. For additional requirements, see Special Provision for Structural Steel Repair and Structural Steel Removal.
6. Procedure for cutting existing Web Stiffener:
 - A. Cut existing vertical stiffener and along web as shown, with a 1" radius min. at web. The minimum distance from cut to face of web shall be the larger of 1/4" or web flange weld size, with removal of remaining material by grinding as described below. The cut shall be made parallel to the web without angling the cut towards the web. Equipment and method of cutting shall be approved by the Engineer. Any method of removal to be used shall ensure that no damage is done to the existing web, vertical stiffener or welds connecting these elements. Cutting shall be done in a manner such that the paint on the opposite face of the web is not damaged. If damage occurs, the damaged area shall be repainted at the Contractor's expense and procedures shall be modified to prevent damage at subsequent removal locations.
 - B. Remove material between cut and web by grinding and grind smooth at web surface and cut end of stiffener. Web flange surfaces and cut end of stiffener shall have a roughness average (Ra) of 250 μ in. or less. Grinding equipment shall be approved by the Engineer. The grinding operator should not gouge the girder web flange.
 - C. The web surface at the modification shall be inspected using dye penetrant or magnetic particle (MT) methods. Any cracks found shall be identified and reported to the Bureau of Bridges and Structures for further disposition.
 - D. The exposed steel surfaces shall be cleaned and painted using an aluminum epoxy mastic primer according to Article 506.05 of the Standard Specifications.
 - E. Cost shall be included with Structural Steel Repair.



VIEW B-B

- * Field Drill holes in New L's using existing Floor Beam as template.
- ** Space to miss existing Epoxy Grouted Threaded Rods.

DESIGNED - GGE	EXAMINED - <i>Timothy A. [Signature]</i>	DATE - OCTOBER 17, 2014
CHECKED - TLC	ACTING ENGINEER OF STRUCTURAL SERVICES	
DRAWN - Kyle M. Steffen/balva	PASSED - <i>Carl [Signature]</i>	
CHECKED - GGE TLC	ACTING ENGINEER OF BRIDGES AND STRUCTURES	

STATE OF ILLINOIS
DEPARTMENT OF TRANSPORTATION

REPAIR DETAIL 102
SN 099-0057

SHEET NO. 16 OF 24 SHEETS

F.A.I. RTE.	SECTION	COUNTY	TOTAL SHEETS	SHEET NO.
80	99-3-BR-2	WILL	57	19
CONTRACT NO. 60Y64			ILLINOIS FED. AID PROJECT	