

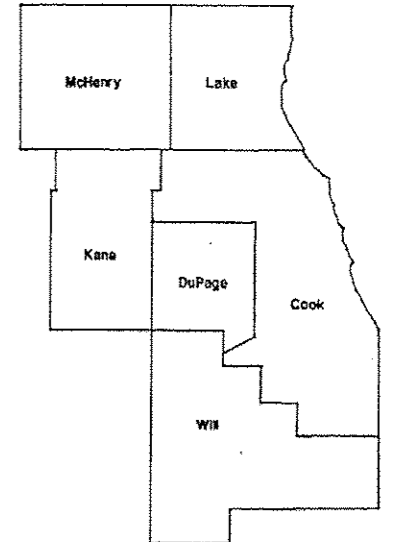
11-21-14 LETTING ITEM 022

ROUTE	SECTION	COUNTY	TOTAL SHEETS	SHEET NUMBER
VARIOUS	2014-054LS	VARIOUS	19	1

D-91-453-14
CONTRACT 60Y70

STATE OF ILLINOIS
DEPARTMENT OF TRANSPORTATION
DIVISION OF HIGHWAYS
DISTRICT ONE
PROPOSED HIGHWAY PLANS

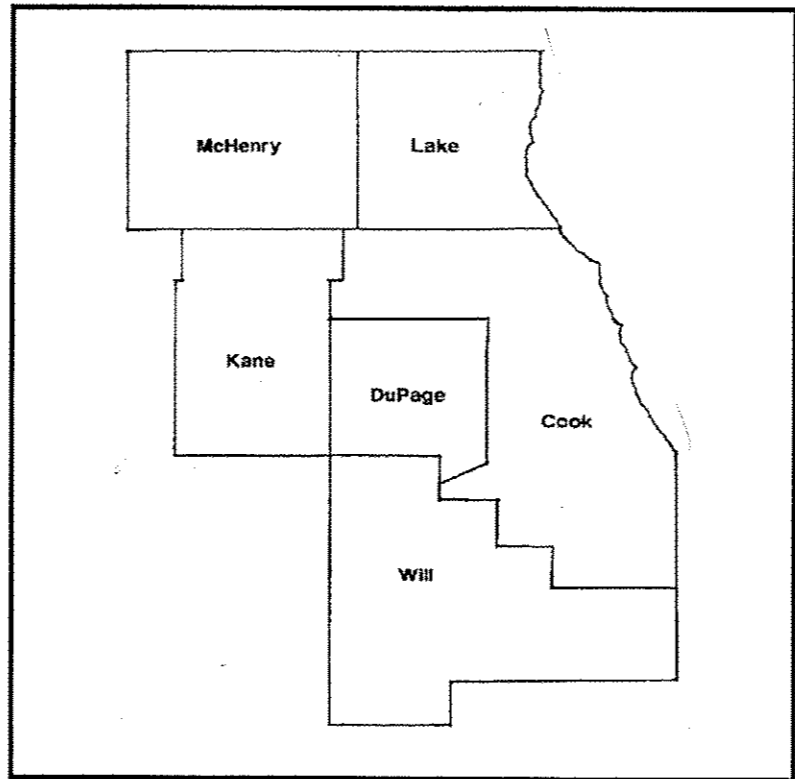
ROUTE: VARIOUS
SECTION: 2014-054LS
LANDSCAPE REPAIR & RENOVATION
VARIOUS COUNTIES
JOB NO.: C-91-453-14



LOCATION OF IMPROVEMENT INDICATED THUS:

FOR INDEX OF SHEETS SEE PAGE 2

**IMPROVEMENTS ARE AT
VARIOUS LOCATIONS WITHIN
DISTRICT ONE**



DISTRICT ONE BUREAU OF MAINTENANCE: J. STUMPNER
MAINTENANCE LANDSCAPE DESIGNER: R. WANNER / M. DEL ROSARIO (847) 705-4171

CONTRACT 60Y70

STATE OF ILLINOIS
DEPARTMENT OF TRANSPORTATION
DIVISION OF HIGHWAYS

SUBMITTED: August 22 2014
John Fortmann
DEPUTY DIRECTOR OF HIGHWAYS, REGION ENGINEER

Oct 17 2014
John D. Baranzelli, P.E.
actg ENGINEER OF DESIGN AND ENVIRONMENT

Oct 17 2014
Omer Osman, P.E.
DIRECTOR OF HIGHWAYS, CHIEF ENGINEER

**PRINTED BY THE AUTHORITY
OF THE STATE OF ILLINOIS**

J.U.L.I.E.: JOINT UTILITY LOCATION
INFORMATION FOR EXCAVATION
(800) 892-0123

ROUTE	SECTION	COUNTY	TOTAL SHEETS	SHEET NUMBER
VARIOUS	2014-054LS	VARIOUS	19	2

CONTRACT 60Y70

INDEX OF SHEETS

- 1 TITLE SHEET
- 2 INDEX OF SHEETS, STATE STANDARDS AND GENERAL NOTES
- 3-4 SUMMARY OF QUANTITIES
- 5 CALENDAR OF CONSTRUCTION
- 6 WORK ORDER
- 7 LOCATION SUMMARY
- 8-18 LAYOUT PLAN SHEETS
- 19 TRAFFIC DETAILS

STATE STANDARDS

- 701001-02 701006-05
- 701101-04 701106-02
- 701501-06 701601-09
- 701701-09 701901-03

GENERAL NOTES

THE CONTRACTOR SHALL ORDER PLANT MATERIAL AND SUBMIT COMPLETED PLANT INSPECTION SHEETS TO IDOT BY JANUARY 31, 2015 TO ASSURE PLANT AVAILABILITY FOR THE SPRING PLANTING SEASON.

FOR ARTERIALS THE CONTRACTOR SHALL CONTACT THE DISTRICT ONE TRAFFIC CONTROL SUPERVISOR AT (847) 705-4470 A MINIMUM OF 72 HOURS IN ADVANCE OF BEGINNING WORK.

BEFORE STARTING ANY EXCAVATION THE CONTRACTOR SHALL CALL THE STATE ELECTRICAL MAINTENANCE CONTRACTOR AT (773) 287-7600, EXTENSION 601, FOR FIELD LOCATIONS OF BURIED CABLE. THE CONTRACTOR SHALL ALSO CALL "JULIE" AT 800-892-0123 AND C.U.A.N. (CHICAGO UTILITY ALERT NETWORK) AT 312-744-7000 FOR FIELD LOCATIONS OF BURIED ELECTRICAL, TELEPHONE, AND GAS FACILITIES. (48 HOUR NOTIFICATION IS REQUIRED).

WHENEVER, DURING CONSTRUCTION OPERATIONS, ANY LOOSE MATERIAL IS DEPOSITED IN THE FLOW LINE OF DRAINAGE STRUCTURES SUCH THAT THE NATURAL FLOW OF WATER IS OBSTRUCTED, IT SHALL BE REMOVED AT THE CLOSE OF EACH WORKING DAY. AT THE CONCLUSION OF CONSTRUCTION OPERATIONS, ALL UTILITY STRUCTURES SHALL BE FREE FROM DIRT AND DEBRIS. THE WORK SPECIFIED ABOVE WILL NOT BE PAID FOR SEPARATELY BUT SHALL BE INCLUDED IN THE COST FOR CATCH BASINS AND MANHOLES TO BE ADJUSTED IN THIS CONTRACT.

THE CONTRACTOR SHALL ADHERE TO LIMITS OF RESTORATION SHOWN. AREAS OUTSIDE THESE LIMITS THAT ARE DAMAGED OR DISTURBED BY THE CONTRACTOR SHALL BE RESTORED AT THE CONTRACTOR'S OWN EXPENSE. NO ADDITIONAL COMPENSATION WILL BE ALLOWED.

PAY ITEMS IN THE SUMMARY OF QUANTITIES HAVE BEEN ESTIMATED, IF, IN THE ENGINEER'S OPINION, THE WORK IS NOT REQUIRED, THE ITEM WILL BE DEDUCTED FROM THE CONTRACT AND NO ADDITIONAL COMPENSATION TO THE CONTRACTOR WILL BE ALLOWED.

ANY WORK WITHIN A LANDSCAPED MEDIAN REQUIRES A LANE CLOSURE AND USE OF AN ARROW BOARD PER IDOT SPECIFICATIONS.

WORK PLANS WILL BE GIVEN AT THE PRECONSTRUCTION MEETING.

**ILLINOIS DEPARTMENT OF TRANSPORTATION
LANDSCAPE REPAIR
INDEX OF SHEETS
GENERAL NOTES
STATE STANDARDS**

ROUTE	SECTION	COUNTY	TOTAL SHEETS	SHEET NUMBER
VARIOUS	2014-054LS	VARIOUS	19	3

PAY ITEM	DESCRIPTION	UNIT	CONTRACT	
			TOTAL	MAINT FUND
X2010310	TREE REMOVAL (SPECIAL)	EACH	15	15
20101700	SUPPLEMENTAL WATERING	UNIT	80	80
21101605	TOPSOIL FURNISH AND PLACE, 2"	SQ YD	5445	5445
21101615	TOPSOIL FURNISH AND PLACE, 4"	SQ YD	1815	1815
25000210	SEEDING, CLASS 2A	ACRE	1.5	1.5
25000400	NITROGEN FERTILIZER NUTRIENT	POUND	165	165
25000500	PHOSPHORUS FERTILIZER NUTRIENT	POUND	120	120
25000600	POTASSIUM FERTILIZER NUTRIENT	POUND	165	165
25003210	INTERSEEDING, CLASS 2A	ACRE	1.0	1.0
25100630	EROSION CONTROL BLANKET	SQ YD	7260	7260
25200110	SODDING, SALT TOLERANT	SQ YD	250	250
67100100	MOBILIZATION	L SUM	1	1
A2000116	TREE, ACER X FREEMANII AUTUMN BLAZE (AUTUMN BLAZE FREEMAN MAPLE), 2" CALIPER, BALLED AND BURLAPPED	EACH	21	21
A2002816	TREE, CATALPA SPECIOSA (NORTHERN CATALPA), 2" CALIPER, BALLED AND BURLAPPED	EACH	10	10
A2002916	TREE, CELTIS OCCIDENTALIS (COMMON HACKBERRY), 2" CALIPER, BALLED AND BURLAPPED	EACH	60	60
A2004716	TREE, GLEDITSIA TRIACANTHOS INERMIS SHADEMASTER (SHADEMASTER THORNLESS COMMON HONEYLOCUST), 2" CALIPER, BALLED AND BURLAPPED	EACH	6	6
A2005016	TREE, GYMNOCLADUS DIOICUS (KENTUCKY COFFEETREE), 2" CALIPER, BALLED AND BURLAPPED	EACH	60	60
A2006516	TREE, QUERCUS BICOLOR (SWAMP WHITE OAK), 2" CALIPER, BALLED AND BURLAPPED	EACH	54	54
A2008468	TREE, ULMUS AMERICANA PRINCETON (PRINCETON AMERICAN ELM), 2" CALIPER, BALLED AND BURLAPPED	EACH	34	34
B2001616	TREE, CRATAEGUS CRUSGALLI INERMIS (THORNLESS COCKSPUR HAWTHORN), 2" CALIPER, TREE FORM, BALLED AND BURLAPPED	EACH	14	14
B2001664	TREE, CRATAEGUS CRUSGALLI INERMIS (THORNLESS COCKSPUR HAWTHORN), 5' HEIGHT, SHRUB FORM, BALLED AND BURLAPPED	EACH	1	1

URBAN
100% STATE 0031

CONTRACT 60Y70

ILLINOIS DEPARTMENT OF TRANSPORTATION

SUMMARY OF QUANTITIES

ROUTE	SECTION	COUNTY	TOTAL SHEETS	SHEET NUMBER
VARIOUS	2014-054LS	VARIOUS	19	4

PAY ITEM	DESCRIPTION	UNIT	URBAN 0031 100% STATE	
			TOTAL	CONTRACT MAINT FUND
B2006216	TREE, SYRINGA RETICULATA (JAPANESE TREE LILAC), 2" CALIPER, TREE FORM, BALLED AND BURLAPPED	EACH	7	7
D2002460	EVERGREEN, PINUS FLEXILIS VANDERWOLF'S PYRAMID (VANDERWOLF'S PYRAMID LIMBER PINE), 5' HEIGHT, BALLED AND BURLAPPED	EACH	33	33

CONTRACT 60Y70

2

ILLINOIS DEPARTMENT OF TRANSPORTATION
SUMMARY OF QUANTITIES

ROUTE VARIOUS	SECTION 2014-054LS	COUNTY VARIOUS	TOTAL SHEETS 19	SHEET NUMBER 5
------------------	-----------------------	-------------------	--------------------	-------------------

CONTRACT 60Y70

60Y70 - SCHEDULE OF LANDSCAPE CONSTRUCTION AND ESTABLISHMENT WORK

Item	2014		2015										2016																			
	November	December	January	February	March	April	May	June	July	August	September	October	November	December	January	February	March	April	May	June	July	August	September	October	November							
PHASE I													PHASE II																			
Plant Material Inspections																																
Submit completed plant inspection forms to IDOT by Jan 31 for spring planting season & Sept 30 for fall planting season	Submit completed plant inspection sheets to IDOT for SPRING plantings		IDOT inspects SPRING plant material at various nurseries												Submit completed plant inspection sheets to IDOT for FALL 2015 replacement plantings (if necessary)	Submit completed plant inspection sheets to IDOT for SPRING 2016 replacement plantings (if necessary)		IDOT inspects SPRING plant material at various nurseries														
Tree Planting																																
Spring plantings of balled and burlapped: March 15 - May 30			spring planting												Period of Establishment Inspection by IDOT			spring planting - replacements & clean-up work														
Fall (ONLY) plantings of balled and burlapped: Nov 1 - Nov 30																fall (ONLY) replacement plantings																
Period of Establishment Plant Care: Weed & Water (Included in cost of tree installation)					2		2		3		3		3		3		2		2													
Supplemental Tree Care																																
Supplemental Watering																	1		2		3		3		3		2		2		1	
Turf Restoration																																
Seeding, Class 2A Spring: March 15 to June 1 Fall: August 1 to Sept 15 Dormant: Sept 16 to March 15			spring seeding period												fall seeding period	dormant seeding period		spring seeding period		fall seeding period												
Tree Removal <6" and Turf Restoration			spring seeding period												fall seeding period	dormant seeding period		spring seeding period		fall seeding period												

ILLINOIS DEPARTMENT OF TRANSPORTATION
CALENDAR OF CONSTRUCTION

ROUTE	SECTION	COUNTY	TOTAL SHEETS	SHEET NUMBER
VARIOUS	2014-054LS	VARIOUS	19	6

CONTRACT 60Y70



LANDSCAPE REPAIR
WORK ORDER
CONTRACT 60Y70

WORK ORDER NUMBER	PAGE: _____ OF _____
-------------------	----------------------

MARKED ROUTE	LOCATION	COUNTY	MUNICIPALITY

WORK ORDER SUMMARY		
PAY CODE	PAY ITEM	QUANTITY

SPECIAL INSTRUCTIONS/ CALCULATIONS	

AUTHORIZATION OF WORK ORDER	CERTIFICATION OF COMPLETED WORK
IDOT Resident Engineer/Technician Signature	Contractor Signature
Date Work Order Issued	Date Work Order Completed
Contractor Initials	

OFFICE USE ONLY	INSPECTION AND ACCEPTANCE OF COMPLETED WORK
Prepared by: _____ INITIAL(S) _____ DATE _____	Inspector Signature
Measured in place by: _____	Date Work Ordered Inspected and Accepted
Calculated by: _____	This is to certify that the work has been completed in conformance
Checked by: _____	

ILLINOIS DEPARTMENT OF TRANSPORTATION
LANDSCAPE REPAIR LOCATION AND
LAYOUT PLAN

ROUTE	SECTION	COUNTY	TOTAL SHEETS	SHEET NUMBER
VARIOUS	2014-054LS	VARIOUS	19	7

CONTRACT 60Y70

LOCATION SUMMARY

COUNTY	CITY/TOWN	SHEET #	GENERAL LOCATION
LAKE	WAUKEGAN	8	US 41 AT WASHINGTON STREET
COOK	MORTON GROVE, SKOKIE	9	I-94 (EDENS EXPRESSWAY) VARIOUS LOCATIONS
COOK	SOUTH BARRINGTON	10	IL 62: EASTINGS WAY TO PENNY ROAD
COOK	WILLOW SPRINGS (UNINCORPORATED)	11	95 TH STREET AT 104 TH (FLAVIN ROAD), COOK COUNTY FOREST PRESERVE
COOK	PALOS HILLS	12	111 TH STREET: DEERPATH LANE TO IL 7 (SOUTHWEST HIGHWAY)
COOK	PARK FOREST	13	WESTERN AVENUE: SAUK TRAIL TO 26 TH STREET
WILL	FRANKFORT	14	US 30 (LINCOLN HIGHWAY): S. ELSNER ROAD TO IL 43 (HARLEM AVENUE)
DUPAGE	WHEATON	15	IL 56 (BUTTERFIELD ROAD): MADISON STREET TO S. NAPERVILLE ROAD
DUPAGE	WARRENVILLE	16	IL 56 (BUTTERFIELD ROAD): EAST OF EJ&E RAILROAD TO EAST OF WINFIELD ROAD
DUPAGE	CAROL STREAM	17	23W634 NORTH AVENUE

ILLINOIS DEPARTMENT OF TRANSPORTATION

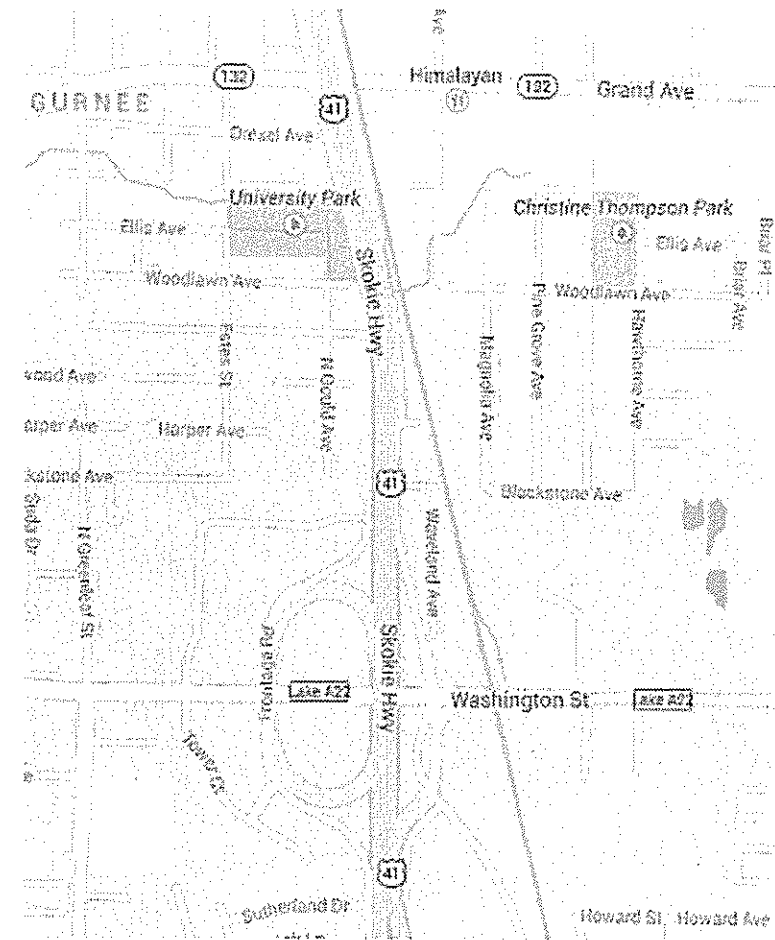
LOCATION SUMMARY

ROUTE	SECTION	COUNTY	TOTAL SHEETS	SHEET NUMBER
VARIOUS	2014-054LS	VARIOUS	19	8

CONTRACT 60Y70

DESCRIPTION	SCHEDULE OF LANDSCAPE ITEMS	TOTAL QTY/UNIT
NITROGEN FERTILIZER NUTRIENT		45 POUND
POTASSIUM FERTILIZER NUTRIENT		45 POUND
SEEDING, CLASS 2A		0.5 ACRE
EROSION CONTROL BLANKET		2420 SQ YD

GENERAL LOCATION MAP



LOCATION: IL 41 (SKOKIE HWY) AT WASHINGTON ST.

CITY/TOWN: WAUKEGAN

COUNTY: COOK

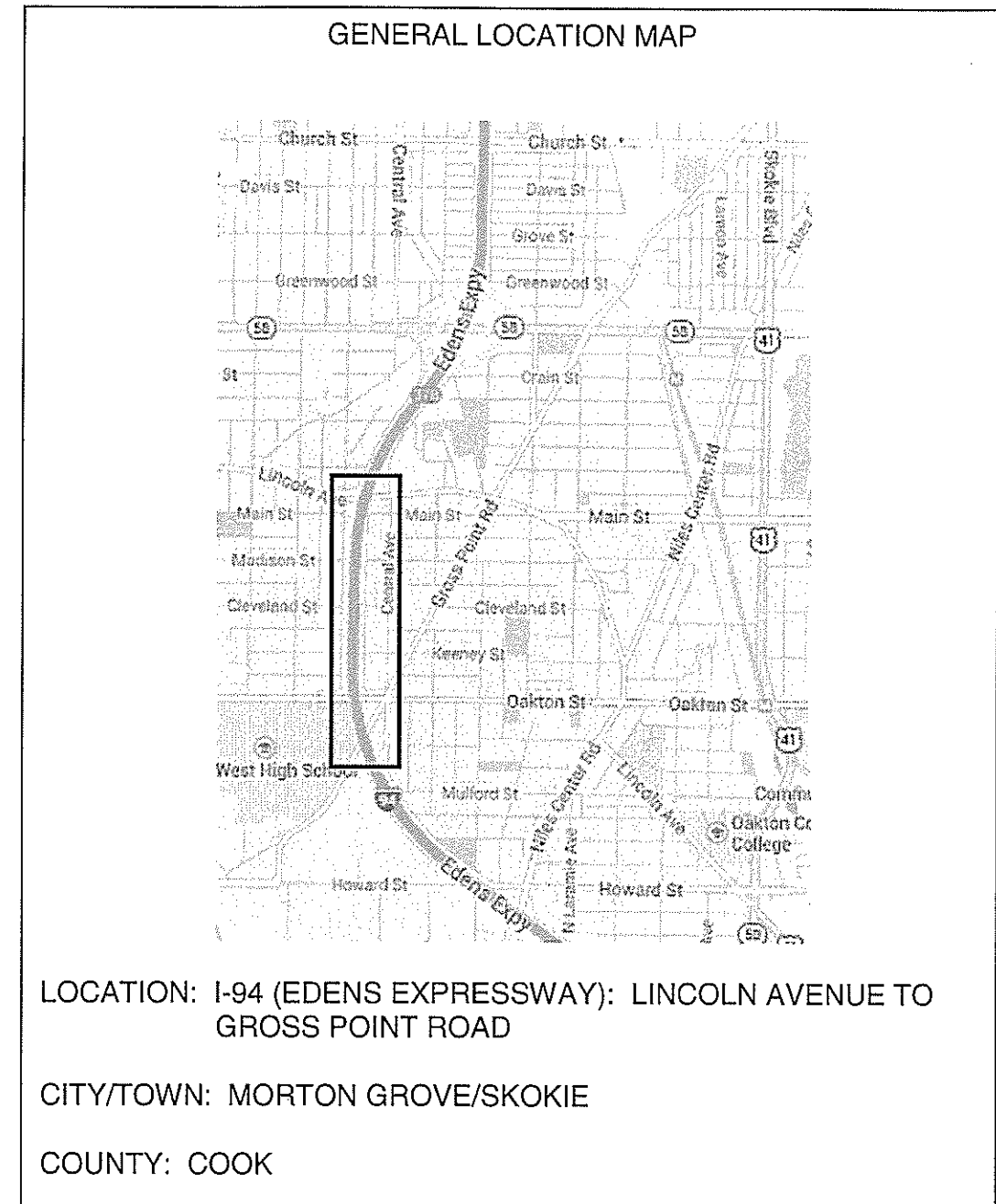
ILLINOIS DEPARTMENT OF TRANSPORTATION

LANDSCAPE REPAIR LOCATION AND
LAYOUT PLAN

ROUTE	SECTION	COUNTY	TOTAL SHEETS	SHEET NUMBER
VARIOUS	2014-054LS	VARIOUS	19	9

CONTRACT 60Y70

DESCRIPTION	SCHEDULE OF LANDSCAPE ITEMS	TOTAL QTY/UNIT
CELTIS OCCIDENTALIS		15 EA
GYMNOCLADUS DIOICUS		10 EA
ULMUS AMERICANA 'PRINCETON'		10 EA
PINUS FLEXILIS VANDERWOLF'S PYRAMID		20 EA



ILLINOIS DEPARTMENT OF TRANSPORTATION
LANDSCAPE REPAIR LOCATION AND LAYOUT PLAN

ROUTE	SECTION	COUNTY	TOTAL SHEETS	SHEET NUMBER
VARIOUS	2014-054LS	VARIOUS	19	10

CONTRACT 60Y70

DESCRIPTION	SCHEDULE OF LANDSCAPE ITEMS	TOTAL QTY/UNIT
CELTIS OCCIDENTALIS		8 EA
QUERCUS BICOLOR		8 EA
ULMUS AMERICANA 'PRINCETON'		8 EA
PINUS FLEXILIS VANDERWOLF'S PYRAMID		11 EA

GENERAL LOCATION MAP

LOCATION: IL 62 (ALGONQUIN ROAD): EASTINGS WAY TO EAST PENNY ROAD
 CITY/TOWN: SOUTH BARRINGTON
 COUNTY: COOK

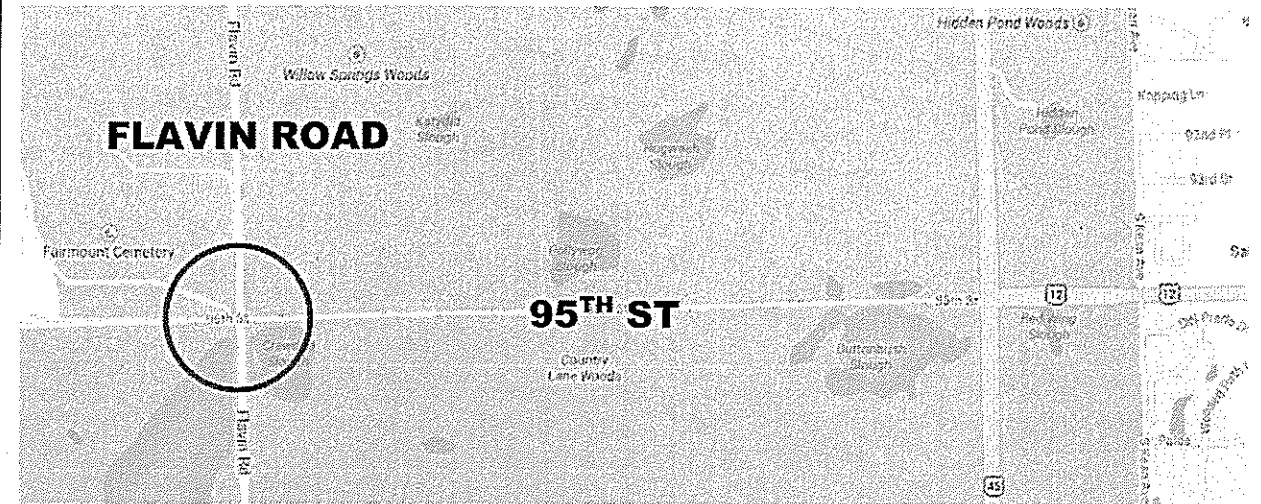
ILLINOIS DEPARTMENT OF TRANSPORTATION
 LANDSCAPE REPAIR LOCATION AND
 LAYOUT PLAN

ROUTE	SECTION	COUNTY	TOTAL SHEETS	SHEET NUMBER
VARIOUS	2014-054LS	VARIOUS	19	11

CONTRACT 60Y70

DESCRIPTION	SCHEDULE OF LANDSCAPE ITEMS	TOTAL QTY/UNIT
QUERCUS BICOLOR		3 EA

GENERAL LOCATION MAP



LOCATION: 95TH ST AT 104TH (FLAVIN RD.), COOK COUNTY FOREST PRESERVE
 CITY/TOWN: WILLOW SPRINGS (UNINCORPORATED)
 COUNTY: COOK

ILLINOIS DEPARTMENT OF TRANSPORTATION

LANDSCAPE REPAIR LOCATION AND
 LAYOUT PLAN

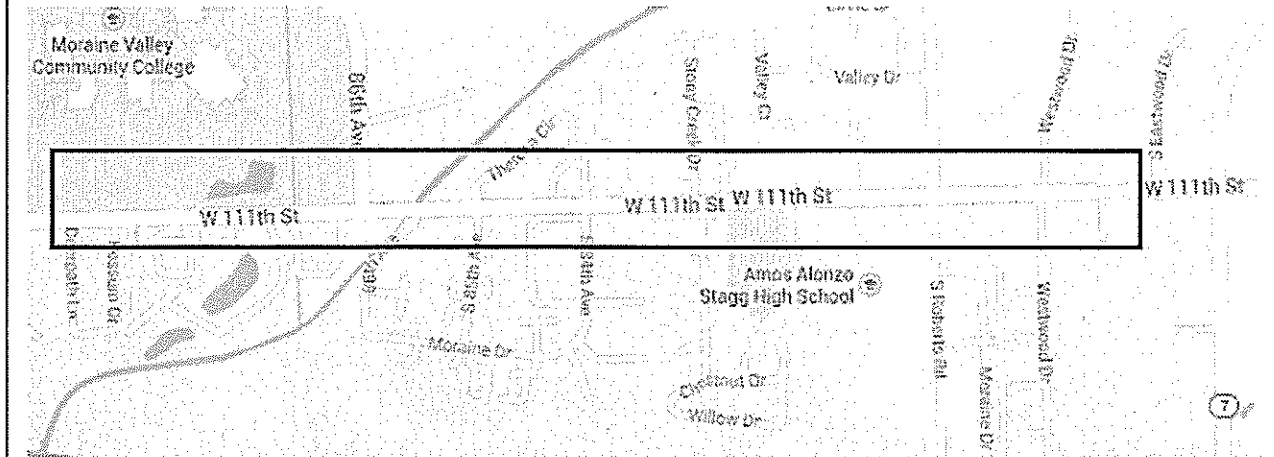
ROUTE	SECTION	COUNTY	TOTAL SHEETS	SHEET NUMBER
VARIOUS	2014-054LS	VARIOUS	19	12

CONTRACT 60Y70

DESCRIPTION SCHEDULE OF LANDSCAPE ITEMS TOTAL QTY/UNIT

GYMNOCLADUS DIOICUS	3 EA
QUERCUS BICOLOR	1 EA
CRATAEGUS CRUSGALLI INERMIS, 2" CAL.	9 EA
SYRINGA RETICULATA	7 EA

GENERAL LOCATION MAP



LOCATION: 111TH ST.: DEERPATH LANE TO IL 7 (SOUTHWEST HIGHWAY)
 CITY/TOWN: PALOS HILLS
 COUNTY: COOK

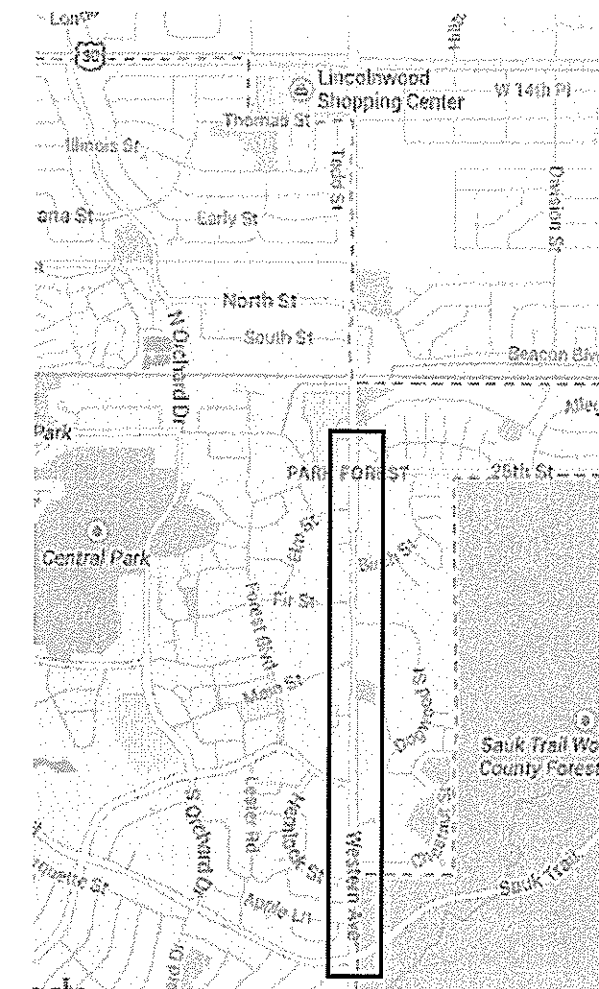
ILLINOIS DEPARTMENT OF TRANSPORTATION
 LANDSCAPE REPAIR LOCATION AND
 LAYOUT PLAN

ROUTE	SECTION	COUNTY	TOTAL SHEETS	SHEET NUMBER
VARIOUS	2014-054LS	VARIOUS	19	13

CONTRACT 60Y70

DESCRIPTION	SCHEDULE OF LANDSCAPE ITEMS	TOTAL QTY/UNIT
CATALPA SPECIOSA		2 EA
CELTIS OCCIDENTALIS		9 EA
GYMNOCLADUS DIOICUS		9 EA
QUERCUS BICOLOR		4 EA
ULMUS AMERICANA 'PRINCETON'		2 EA

GENERAL LOCATION MAP



LOCATION: WESTERN AVENUE: SAUK TRAIL TO 26TH STREET
 CITY/TOWN: PARK FOREST
 COUNTY: COOK

ILLINOIS DEPARTMENT OF TRANSPORTATION
 LANDSCAPE REPAIR LOCATION AND
 LAYOUT PLAN

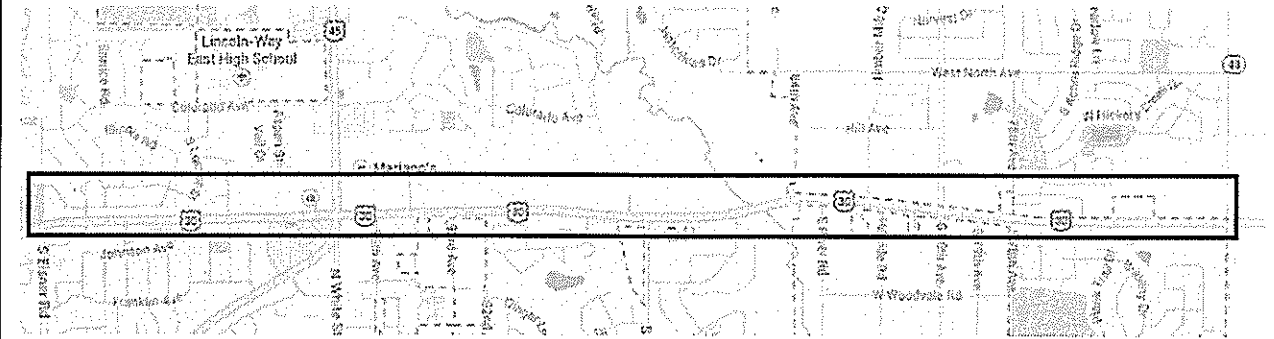
ROUTE	SECTION	COUNTY	TOTAL SHEETS	SHEET NUMBER
VARIOUS	2014-054LS	VARIOUS	19	14

CONTRACT 60Y70

DESCRIPTION SCHEDULE OF LANDSCAPE ITEMS TOTAL QTY/UNIT

ACER X FREEMANII 'AUTUMN BLAZE'	3 EA
GLEDITSIA TRIACANTHOS VAR. INERMIS 'SHADEMASTER'	1 EA
QUERCUS BICOLOR	1 EA
CRATAEGUS CRUSGALLI INERMIS, 2" CAL.	5 EA
PINUS FLEXILIS VANDERWOLF'S PYRAMID	2 EA

GENERAL LOCATION MAP



LOCATION: US 30 (LINCOLN HIGHWAY): S. ELSNER ROAD TO IL 43

CITY/TOWN: FRANKFORT

COUNTY: WILL

ILLINOIS DEPARTMENT OF TRANSPORTATION

LANDSCAPE REPAIR LOCATION AND
LAYOUT PLAN

ROUTE	SECTION	COUNTY	TOTAL SHEETS	SHEET NUMBER
VARIOUS	2014-054LS	VARIOUS	19	15

CONTRACT 60Y70

DESCRIPTION	SCHEDULE OF LANDSCAPE ITEMS	TOTAL QTY/UNIT
ACER X FREEMANII 'AUTUMN BLAZE'		5 EA
GLEDITSIA TRIACANTHOS VAR. INERMIS 'SHADEMASTER'		2 EA
GYMNOCLADUS DIOICUS		1 EA
QUERCUS BICOLOR		4 EA
ULMUS AMERICANA 'PRINCETON'		1 EA
TREE REMOVAL <6" & TURF RESTORATION		3 EA

GENERAL LOCATION MAP

LOCATION: IL 56 (BUTTERFIELD ROAD); MADISON ST. TO S. NAPERVILLE RD.
 CITY/TOWN: WHEATON
 COUNTY: DUPAGE

ILLINOIS DEPARTMENT OF TRANSPORTATION
 LANDSCAPE REPAIR LOCATION AND
 LAYOUT PLAN

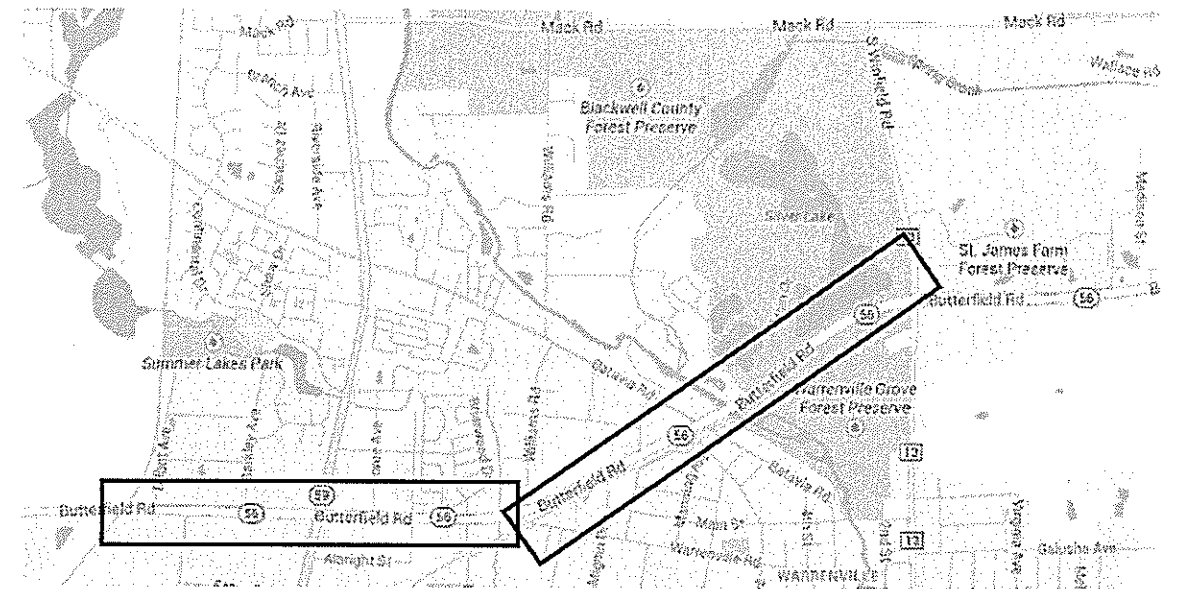
ROUTE	SECTION	COUNTY	TOTAL SHEETS	SHEET NUMBER
VARIOUS	2014-054LS	VARIOUS	19	16

CONTRACT 60Y70

SCHEDULE OF LANDSCAPE ITEMS

DESCRIPTION	TOTAL QTY/UNIT
ACER X FREEMANII 'AUTUMN BLAZE'	13 EA
CELTIS OCCIDENTALIS	15 EA
GYMNOCLADUS DIOICUS	22 EA
QUERCUS BICOLOR	27 EA
ULMUS AMERICANA 'PRINCETON'	3 EA
CRATAEGUS CRUSGALLI INERMIS, 5'	1 EA

GENERAL LOCATION MAP



LOCATION: IL 56 (BUTTERFIELD RD.) EAST OF EJ&E RAILROAD TO EAST OF WINFIELD RD.

CITY/TOWN: WARRENVILLE

COUNTY: DUPAGE

ILLINOIS DEPARTMENT OF TRANSPORTATION

LANDSCAPE REPAIR LOCATION AND LAYOUT PLAN

ROUTE	SECTION	COUNTY	TOTAL SHEETS	SHEET NUMBER
VARIOUS	2014-054LS	VARIOUS	19	18

CONTRACT 60Y70

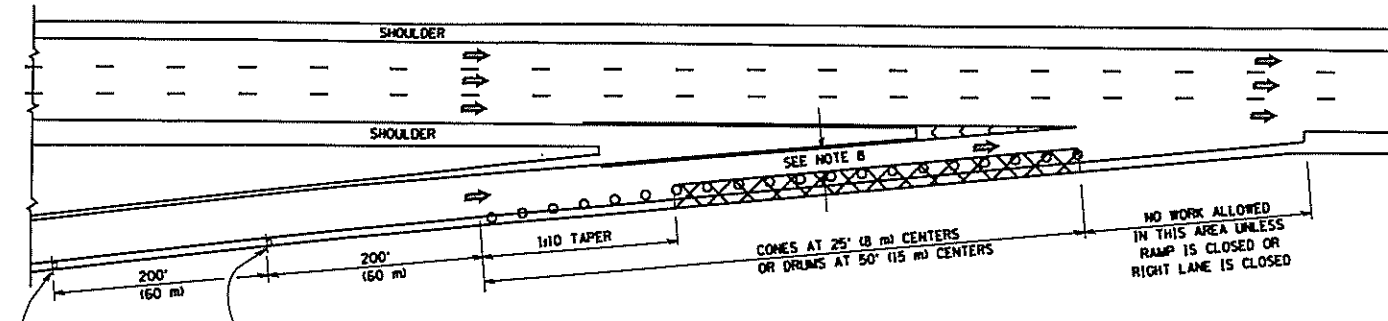
DESCRIPTION	<u>SCHEDULE OF LANDSCAPE ITEMS</u>	TOTAL QTY/UNIT
TOPSOIL FURNISH AND PLACE, 2"		5445 SQ YD
TOPSOIL FURNISH AND PLACE, 4"		1815 SQ YD
NITROGEN FERTILIZER NUTRIENT		90 POUND
PHOSPHORUS FERTILIZER NUTRIENT		90 POUND
POTASSIUM FERTILIZER NUTRIENT		90 POUND
SEEDING, CLASS 2A		1 ACRE
INTERSEEDING, CLASS 2A		1 ACRE
EROSION CONTROL BLANKET		4840 SQ YD
SODDING, SALT TOLERANT		250 SQ YD
TREE REMOVAL <6" & TURF RESTORATION		12 EA

ILLINOIS DEPARTMENT OF TRANSPORTATION

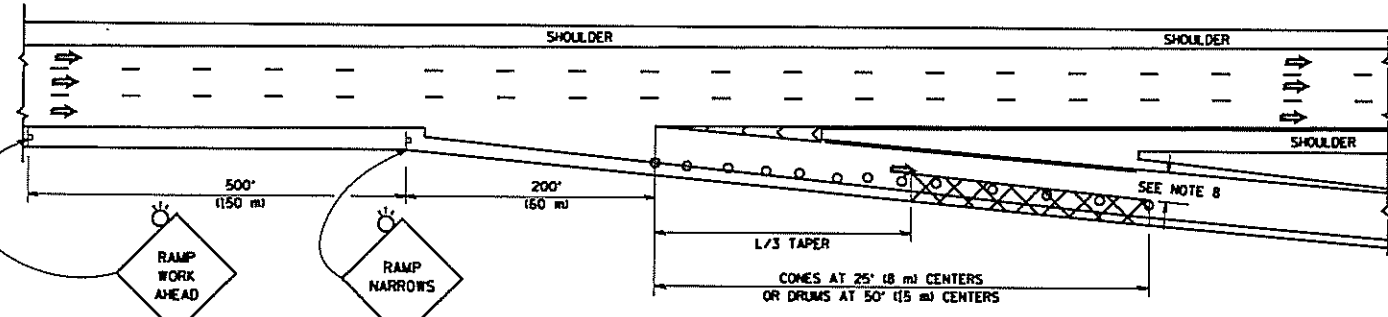
LANDSCAPE REPAIR LOCATION AND
LAYOUT PLAN

PARTIAL RAMP CLOSURE DETAILS

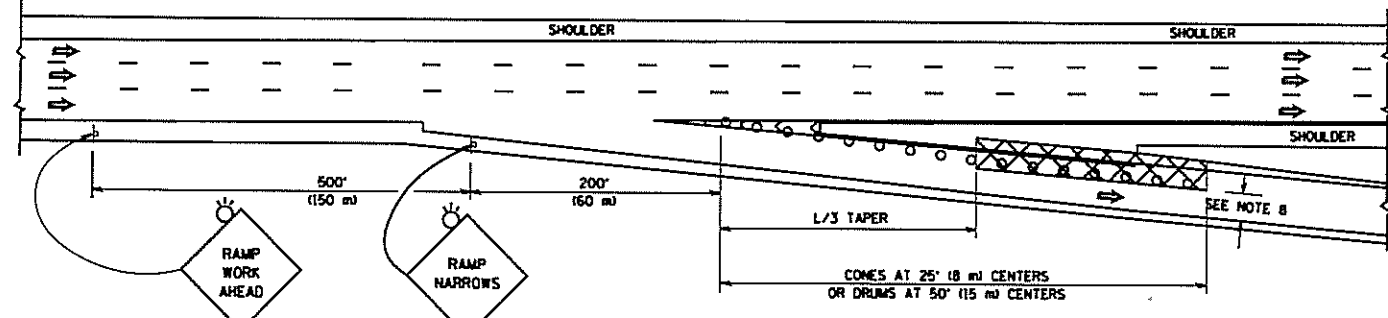
SHOULDER CLOSURE DETAILS



TYPICAL ENTRANCE RAMP



TYPICAL EXIT RAMP



TYPICAL EXIT RAMP

SYMBOLS

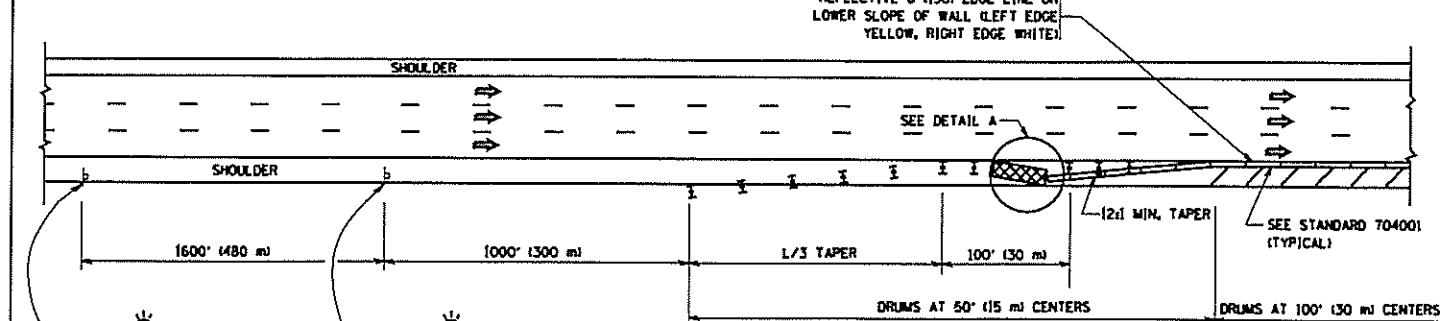
- ACTIVE WORK AREA
- SIGN ON PORTABLE OR PERMANENT SUPPORT
- FLAGGER WITH CONTROL SIGN
- TYPE II BARRICADE OR DRUM WITH STEADY BURN MONO-DIRECTIONAL LIGHT
- CONE, DRUM OR BARRICADE
- IMPACT ATTENUATOR OF TYPE AND TEST LEVEL SPECIFIED

GENERAL NOTES

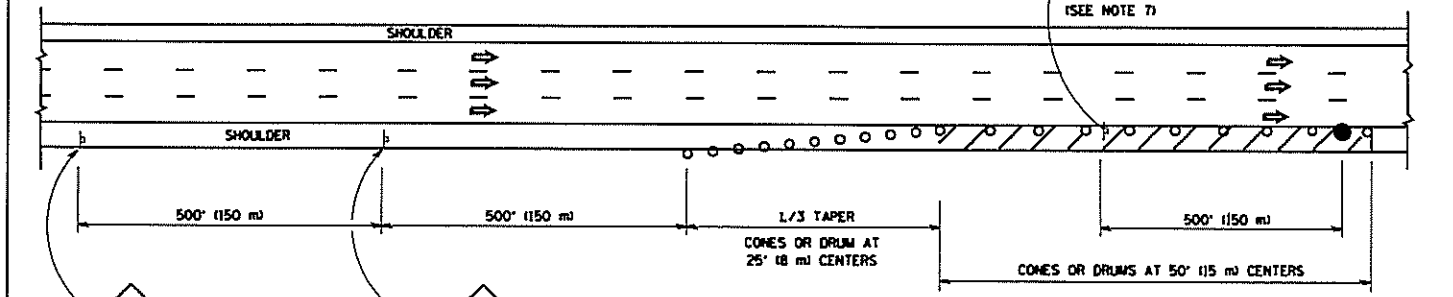
1. THE "L" DISTANCE EQUALS:

SPEED LIMIT	FORMULAS
45 mph (80 km/h) OR GREATER	METRIC: $L = 0.65(W)(S)$ ENGLISH: $L = W(S)$

W = WIDTH OF OFFSET IN FEET (METERS)
S = NORMAL POSTED SPEED MPH (KM/H)
2. PLASTIC DRUMS WITH HIGH PERFORMANCE REFLECTIVE SHEETING AND STEADY BURNING LIGHTS ARE REQUIRED FOR ALL NIGHTTIME CLOSURES.
3. ALL SIGNS SHALL BE POST MOUNTED IF THE CLOSURE TIME EXCEEDS FOUR DAYS.
4. FLASHING LIGHTS SHALL BE USED DURING THE HOURS OF DARKNESS AND SHALL BE INSTALLED ABOVE THE FIRST TWO SETS OF SIGNS.

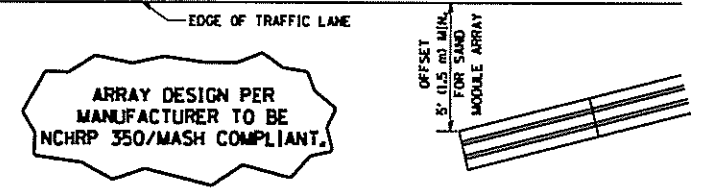


PERMANENT SHOULDER CLOSURE



DAYTIME SHOULDER CLOSURE

THIS DETAIL IS USED WHERE:
 1. VEHICLES, EQUIPMENT, WORKERS OR THEIR ACTIVITIES ENCRUSH IN AN AREA CLOSER THAN 15' (4.5 m) TO THE EDGE OF PAVEMENT FOR A PERIOD IN EXCESS OF 15 MINUTES.



ARRAY DESIGN PER MANUFACTURER TO BE NCHRP 350/MASH COMPLIANT.

DETAIL "A" IMPACT ATTENUATOR, TEMPORARY (SEE NOTE 5)

5. THE IMPACT ATTENUATOR, TEMPORARY IS NOT REQUIRED WHEN THE TEMPORARY CONCRETE BARRIER WALL IS PROTECTED BY OR IS TIED INTO THE EXISTING GUARDRAIL. IF OFFSET IS LESS THAN 5 FEET USE NARROW USE TYPE DEVICE TO MEET NCHRP350/MASH.
6. AUTHORIZATION FROM THE DISTRICT'S BUREAU OF TRAFFIC IS REQUIRED FOR ALL FREEWAY CLOSURES.
7. THE FLAGGER AND FLAGGER SIGN ARE REQUIRED AT THE ABOVE WORK SITES WHEN:
 - a. FOUR OR MORE WORK VEHICLES ENTER THE TRAFFIC LANES IN A ONE HOUR PERIOD.
 - b. THE WORK ACTIVITY REQUIRES FREQUENT ENCRUSHMENT INTO THE LANE OPEN TO TRAFFIC.
 THE FLAGGER SHALL BE STATIONED APPROXIMATELY 100' (30 m) TO 200' (60 m) IN ADVANCE OF THE WORKERS.
8. 12' MIN. WIDTH TANGENT SECTION
16' MIN. WIDTH CURVE SECTION.

ALL DIMENSIONS ARE IN INCHES (MILLIMETERS) UNLESS OTHERWISE SHOWN.

FILE NAME =	USER NAME = lcyca	DESIGNED -	REVISED - J.A.F. 12-06	STATE OF ILLINOIS DEPARTMENT OF TRANSPORTATION	TRAFFIC CONTROL DETAILS FOR FREEWAY SHOULDER CLOSURES AND PARTIAL RAMP CLOSURES		F.A. RTE.	SECTION	COUNTY	TOTAL SHEETS	SHEET NO.	
m:\p\work\p\dot\lcyca\108335\17.dwg		DRAWN - D.W.S.	REVISED - S.P.B. 01-07		SCALE: NONE	SHEET NO. 1 OF 1 SHEETS	STA.	TO STA.	2014-054LS	VARIOUS	19	19
		CHECKED -	REVISED - S.P.B. 12-09						IC-17			
		DATE - 11-96	REVISED - M.D. 06-13									CONTRACT NO. 60470