

STATE OF ILLINOIS  
DEPARTMENT OF TRANSPORTATION  
DIVISION OF HIGHWAYS

**PROPOSED  
HIGHWAY PLANS**

FAP ROUTE 646 (IL 40)  
SECTION 101 BR-3

**PROJECT: ACBRF-ACF-0646(078)**  
BRIDGE REPLACEMENT  
WHITESIDE COUNTY

F.A.P. RTE.	SECTION	COUNTY	TOTAL SHEETS	SHEET NO.
646	101 BR-3	WHITESIDE	130	1
FED. ROAD DIST. NO. 2	ILLINOIS	CONTRACT NO. 64C17		

D-92-045-06

FOR INDEX OF SHEETS, SEE SHEET NO. 2

FOR STATE STANDARDS, SEE SHEET NO. 2

FUNCTIONAL CLASSIFICATION

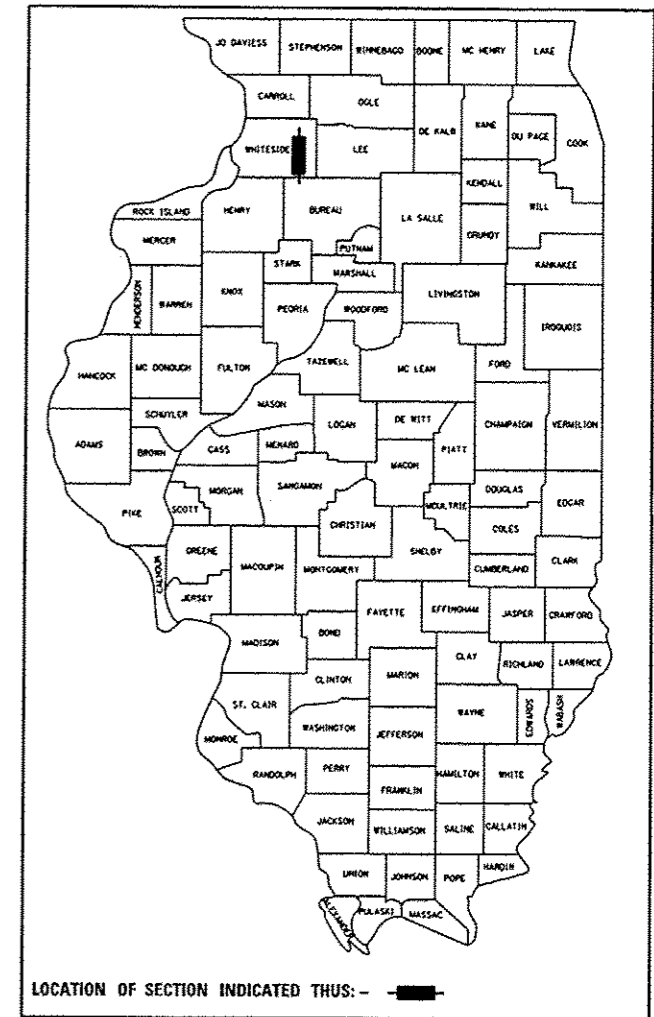
OTHER PRINCIPAL ARTERIAL

2007 ADT = 8,500

2027 ADT = 11,000

POSTED AND DESIGN SPEED LIMIT = 55 MPH

C-92-091-12  
R 7 E



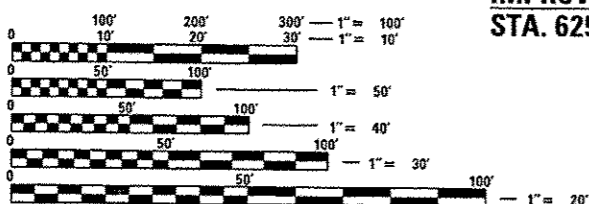
STRUCTURE REMOVAL AND REPLACEMENT STA. 632 + 59.38  
(EXISTING SN = 098-0015)  
IL 40 OVER HENNEPIN CANAL FEEDER

PROJECT BEGINS  
STA. 628 + 50.00

IMPROVEMENT BEGINS  
STA. 625 + 00.00

IMPROVEMENT ENDS  
STA. 641 + 71.93

STRAND ASSOCIATES, INC.  
IDFPR NO. 184001273



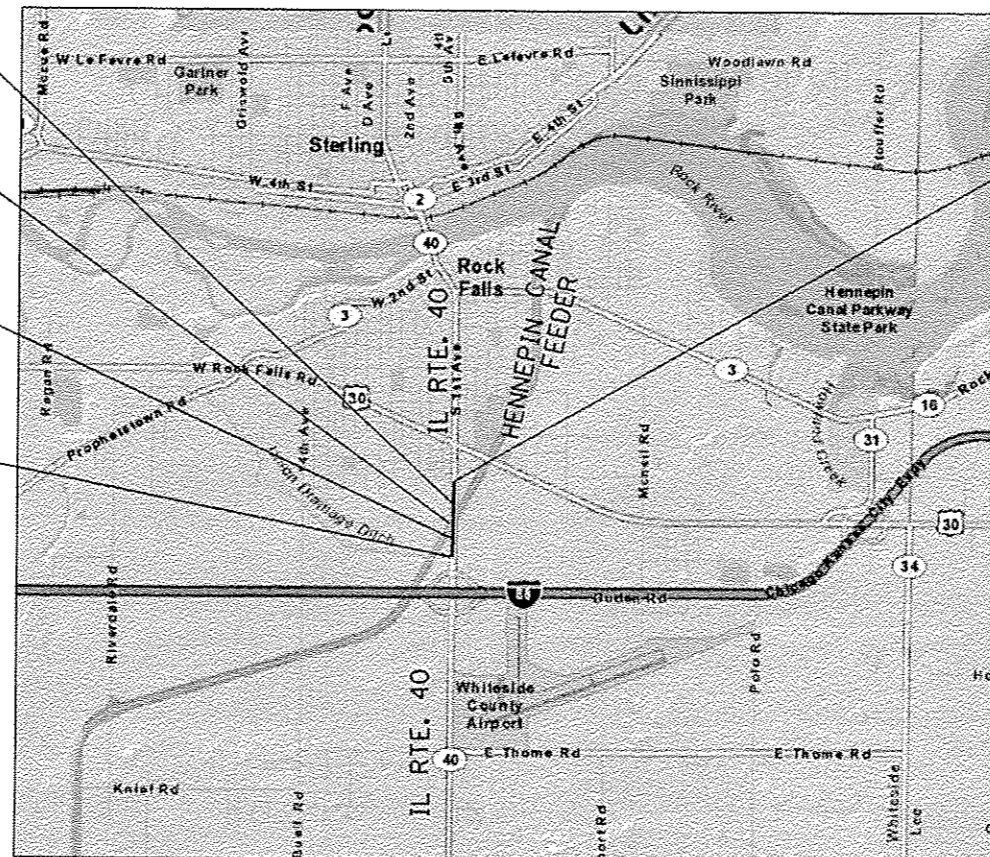
FULL SIZE PLANS HAVE BEEN PREPARED USING STANDARD ENGINEERING SCALES. REDUCED SIZED PLANS WILL NOT CONFORM TO STANDARD SCALES. IN MAKING MEASUREMENTS ON REDUCED PLANS, THE ABOVE SCALES MAY BE USED.

J.U.L.I.E.  
JOINT UTILITY LOCATION INFORMATION FOR EXCAVATION  
1-800-892-0123  
OR 811

COLOMA TOWNSHIP, SECTION 33 & 34, MONTMORENCY TOWNSHIP, SECTION 3 & 4

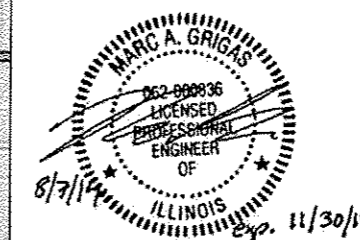
PROJECT ENGINEER: BECKY MARRUFFO  
PROJECT MANAGER: BECKY MARRUFFO (815) 284-5902

CONTRACT NO. 64C17



LOCATION MAP

GROSS LENGTH = 850 FEET = 0.161 MILE  
NET LENGTH = 850 FEET = 0.161 MILE



MARC A. GRIGAS, P.E.  
THIS STAMP APPLIES TO  
DRAWINGS NO. 1-60, 110-130



ANTHONY J. STANDISH, P.E., S.E.  
THIS STAMP APPLIES TO  
DRAWINGS NO. 61-109



STATE OF ILLINOIS  
DEPARTMENT OF TRANSPORTATION  
DIVISION OF HIGHWAYS

SUBMITTED 8-15-2014  
Paul A. Loeter  
DEPUTY DIRECTOR OF HIGHWAYS, REGION ENGINEER

Oct 17, 2014  
John D. Baranzelli PE, Jr.  
ENGINEER OF DESIGN AND ENVIRONMENT

Oct 17, 2014  
Omer Osman PE, Jr.  
DIRECTOR OF HIGHWAYS, CHIEF ENGINEER

PRINTED BY THE AUTHORITY  
OF THE STATE OF ILLINOIS

Rev. 11-4-14

CONSULTANT: STRAND ASSOCIATES INC. (815) 744-4200 ANTHONY J. STANDISH, P.E., S.E. (815) 722-4200