

STATE OF ILLINOIS  
DEPARTMENT OF TRANSPORTATION  
DIVISION OF HIGHWAYS

**PROPOSED  
HIGHWAY PLANS**

FAP ROUTE 646 (IL 40)  
SECTION 101 BR-3

**PROJECT: ACBRF-ACF-0646(078)**  
BRIDGE REPLACEMENT  
WHITESIDE COUNTY

F.A.P. RTE.	SECTION	COUNTY	TOTAL SHEETS	SHEET NO.
646	101 BR-3	WHITESIDE	130	1
FED. ROAD DIST. NO. 2	ILLINOIS	CONTRACT NO. 64C17		

D-92-045-06

FOR INDEX OF SHEETS, SEE SHEET NO. 2

FOR STATE STANDARDS, SEE SHEET NO. 2

FUNCTIONAL CLASSIFICATION

OTHER PRINCIPAL ARTERIAL

2007 ADT = 8,500

2027 ADT = 11,000

POSTED AND DESIGN SPEED LIMIT = 55 MPH



C-92-091-12  
R 7 E

PROJECT ENDS  
STA. 637 + 00.00

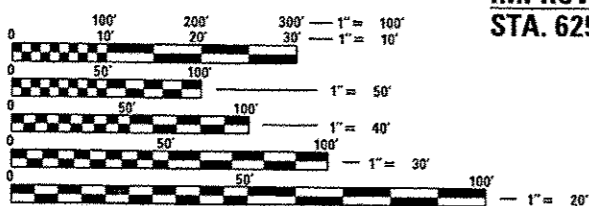
STRUCTURE REMOVAL AND REPLACEMENT STA. 632 + 59.38  
(EXISTING SN = 098-0015)  
IL 40 OVER HENNEPIN CANAL FEEDER

PROJECT BEGINS  
STA. 628 + 50.00

IMPROVEMENT BEGINS  
STA. 625 + 00.00

IMPROVEMENT ENDS  
STA. 641 + 71.93

STRAND ASSOCIATES, INC.  
IDFPR NO. 184001273



FULL SIZE PLANS HAVE BEEN PREPARED USING STANDARD ENGINEERING SCALES. REDUCED SIZED PLANS WILL NOT CONFORM TO STANDARD SCALES. IN MAKING MEASUREMENTS ON REDUCED PLANS, THE ABOVE SCALES MAY BE USED.

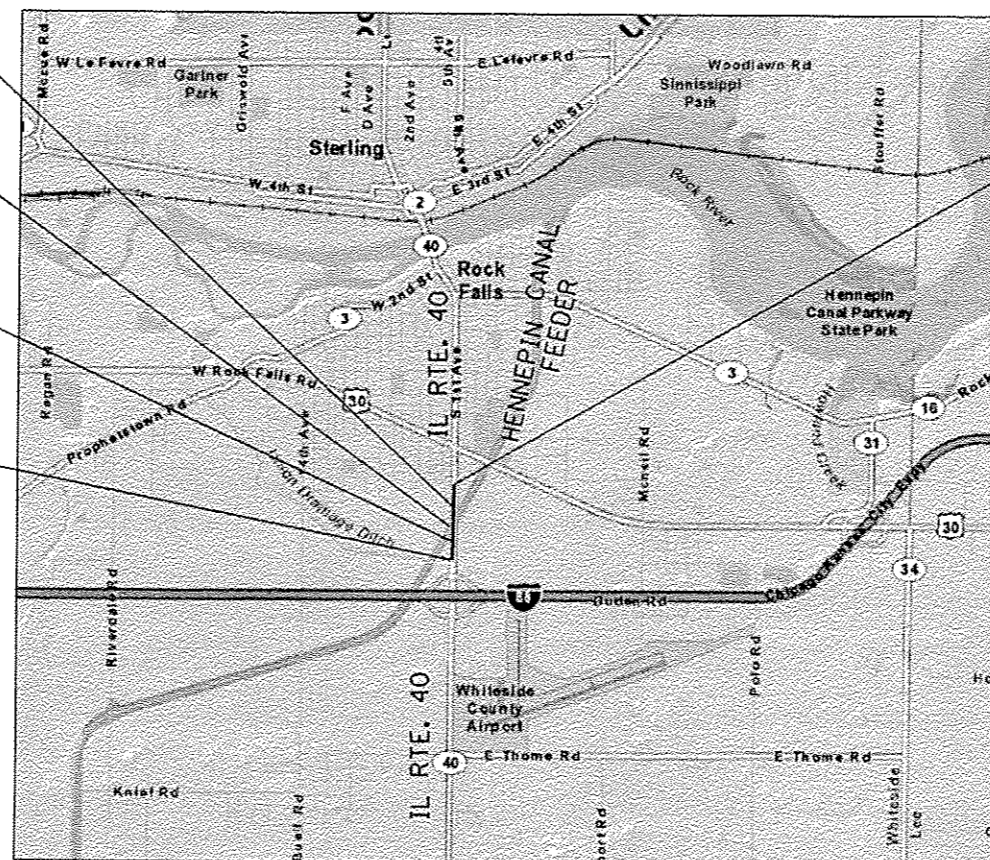
J.U.L.I.E.  
JOINT UTILITY LOCATION INFORMATION FOR EXCAVATION  
1-800-892-0123  
OR 811

COLOMA TOWNSHIP, SECTION 33 & 34, MONTMORENCY TOWNSHIP, SECTION 3 & 4

PROJECT ENGINEER: BECKY MARRUFFO

PROJECT MANAGER: BECKY MARRUFFO (815) 284-5902

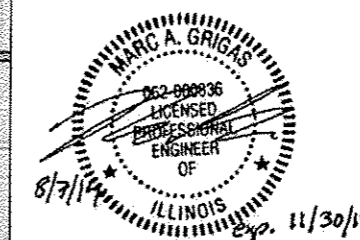
CONTRACT NO. 64C17



LOCATION MAP

GROSS LENGTH = 850 FEET = 0.161 MILE

NET LENGTH = 850 FEET = 0.161 MILE



MARC A. GRIGAS, P.E.  
THIS STAMP APPLIES TO  
DRAWINGS NO. 1-60, 110-130



ANTHONY J. STANDISH, P.E., S.E.  
THIS STAMP APPLIES TO  
DRAWINGS NO. 61-109

**SA STRAND ASSOCIATES**  
1170 SOUTH HOUBOLT ROAD  
JOLIET, ILLINOIS 60431  
(815) 744-4200  
IDFPR NO. 184-001273

STATE OF ILLINOIS  
DEPARTMENT OF TRANSPORTATION  
DIVISION OF HIGHWAYS

SUBMITTED 8-15-2014

Paul A. Loeter  
DEPUTY DIRECTOR OF HIGHWAYS, REGION ENGINEER

Oct 17 2014  
John D. Baranzelli PE  
ENGINEER OF DESIGN AND ENVIRONMENT

Oct 17 2014  
Omer Osman PE  
DIRECTOR OF HIGHWAYS, CHIEF ENGINEER

PRINTED BY THE AUTHORITY  
OF THE STATE OF ILLINOIS

Rev. 11-4-14

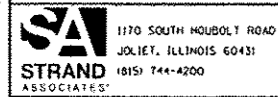
CONSULTANT: STRAND ASSOCIATES INC. (815) 744-4200 ANTHONY J. STANDISH, P.E., S.E. (815) 722-4200

ACE ACBRF A

CODE NO.	ITEM	UNIT	TOTAL QUANTITY	URBAN	
				CONST. CODE 80% FED 20% STATE ROADWAY 0004 RURAL	CONST. CODE 80% FED 20% STATE BRIDGE 0011 S. N. 098-0015
20200100	EARTH EXCAVATION	CU YD	1,580	1,580	
20400800	FURNISHED EXCAVATION	CU YD	630	630	
20700220	POROUS GRANULAR EMBANKMENT	CU YD	448		448
20900110	POROUS GRANULAR BACKFILL	CU YD	250	250	
21101615	TOPSOIL FURNISH AND PLACE, 4"	SQ YD	4,820	4,820	
25000210	SEEDING, CLASS 2A	ACRE	1.25	1.25	
25000400	NITROGEN FERTILIZER NUTRIENT	POUND	96	96	
25000500	PHOSPHORUS FERTILIZER NUTRIENT	POUND	96	96	
25000600	POTASSIUM FERTILIZER NUTRIENT	POUND	96	96	
25100115	MULCH, METHOD 2	ACRE	1.25	1.25	
25100630	EROSION CONTROL BLANKET	SQ YD	5,109	5,109	
28000250	TEMPORARY EROSION CONTROL SEEDING	POUND	3,500	3,500	
28000400	PERIMETER EROSION BARRIER	FOOT	1,696	1,696	
28000500	INLET AND PIPE PROTECTION	EACH	4	4	

+ SPECIALTY ITEM

FILE NAME : H:\jpl\6289--6399\6246-025\Micro\DATA\026-C17-141-5001.dgn



1170 SOUTH HOUBOLT ROAD  
JOLIET, ILLINOIS 60431  
(815) 744-4200

USER NAME : brianf  
DESIGNED - VLF  
DRAWN - DJW  
CHECKED - MAG  
DATE - 8-14-14  
REVISOR -  
REVISION -  
REVISOR -  
REVISION -

STATE OF ILLINOIS  
DEPARTMENT OF TRANSPORTATION

SUMMARY OF QUANTITIES  
SCALE: N/A SHEET 1 OF 9 SHEETS STA. TO STA.

F.A.P. RTE. 646 SECTION 101 BR-3 COUNTY WHITESIDE TOTAL SHEETS 130 SHEET NO. 5 CONTRACT NO. 64C17  
FED. ROAD DIST. NO. 2 ILLINOIS FED. AID PROJECT

Rev. 11-6-14

ACF ACBRF

CODE NO.	ITEM	UNIT	URBAN TOTAL QUANTITY	CONST. CODE	
				80% FED 20% STATE ROADWAY 0004 RURAL	80% FED 20% STATE BRIDGE 0011 S.N. 098-0015
28100107	STONE RIPRAP, CLASS A4	SO YD	30	30	
28200200	FILTER FABRIC	SO YD	30	30	
30300011	AGGREGATE SUBGRADE IMPROVEMENT	TON	567	567	
30300112	AGGREGATE SUBGRADE IMPROVEMENT 12"	SO YD	861	861	
40600400	MIXTURE FOR CRACKS, JOINTS, AND FLANGWAYS	TON	2	2	
40600635	LEVELING BINDER (MACHINE METHOD), N70	TON	122	122	
40603085	HOT-MIX ASPHALT BINDER COURSE, IL-19.0, N70	TON	1,576	1,576	
40603310	HOT-MIX ASPHALT SURFACE COURSE, MIX "C", N50	TON	180	180	
40603340	HOT-MIX ASPHALT SURFACE COURSE, MIX "D", N70	TON	406	406	
42001430	BRIDGE APPROACH PAVEMENT CONNECTOR (FLEXIBLE)	SO YD	213	213	
42400200	PORTLAND CEMENT CONCRETE SIDEWALK 5 INCH	SO FT	4,780.0	4,780.0	
44000100	PAVEMENT REMOVAL	SO YD	163	163	
44000500	COMBINATION CURB AND GUTTER REMOVAL	FOOT	3,368	3,368	
44000600	SIDEWALK REMOVAL	SO FT	700	700	

+ SPECIALTY ITEM

FILE NAME: s:\j\16380-6349\6346-025\Micro\Sh\1026\CI7-INT-5001.dgn



1170 SOUTH HOUBOLT ROAD  
JOLIET, ILLINOIS 60431  
(815) 744-4200

USER NAME: brionf	DESIGNED: VLF	REVISED:
PLOT SCALE: 20.0000' / in.	DRAWN: DJW	REVISED:
PLOT DATE: 8/14/2014	CHECKED: MAG	REVISED:
	DATE: 8-14-14	REVISED:

STATE OF ILLINOIS  
DEPARTMENT OF TRANSPORTATION

SUMMARY OF QUANTITIES

SCALE: N/A	SHEET 2 OF 9 SHEETS	STA. TO STA.
------------	---------------------	--------------

F.A.P. RTE.	SECTION	COUNTY	TOTAL SHEETS	SHEET NO.
646	101 BR-3	WHITESIDE	130	6
CONTRACT NO. 64C17				

FED. ROAD DIST. NO. 2 ILLINOIS FED. AID PROJECT

Rev. 11-6-14

ACF ACBRF 1

CODE NO.	ITEM	UNIT	TOTAL QUANTITY	URBAN	
				CONST. CODE 80% FED 20% STATE ROADWAY 0004 RURAL	CONST. CODE 80% FED 20% STATE BRIDGE 0011 S. N. 098-0015
44004250	PAVED SHOULDER REMOVAL	SO YD	1.873	1.873	
44300200	STRIP REFLECTIVE CRACK CONTROL TREATMENT	FOOT	325	325	
48203023	HOT-MIX ASPHALT SHOULDERS, 6 1/2"	SO YD	1,721	1,721	
50100100	REMOVAL OF EXISTING STRUCTURES	EACH	1		1
50102400	CONCRETE REMOVAL	CU YD	82.0		82.0
50200100	STRUCTURE EXCAVATION	CU YD	1,313		1,313
50200450	REMOVAL AND DISPOSAL OF UNSUITABLE MATERIAL FOR STRUCTURES	CU YD	448		448
50300225	CONCRETE STRUCTURES	CU YD	778.0		778.0
50300255	CONCRETE SUPERSTRUCTURE	CU YD	643.0		643.0
50300260	BRIDGE DECK GROOVING	SO YD	1,307		1,307
50300300	PROTECTIVE COAT	SO YD	1,431		1,431
50500105	FURNISHING AND ERECTING STRUCTURAL STEEL	L SUM	1		1
50500505	STUD SHEAR CONNECTORS	EACH	6,480		6,480
50800205	REINFORCEMENT BARS, EPOXY COATED	POUND	271,220		271,220

+ SPECIALTY ITEM

FILE NAME: I:\Jpl\6388-6391\6345\825\microw\sh\028\c17.plt-5001.dgn

**SA**  
1170 SOUTH HOUBOLT ROAD  
JOLIET, ILLINOIS 60431  
STRAND ASSOCIATES  
(815) 744-4200

USER NAME	* brianf
DESIGNED	- VLF
DRAWN	- DJW
CHECKED	- MAG
DATE	- 8-14-14
PLT SCALE	* 20.0000' / 1" =
PLT DATE	* 8/14/2014

DESIGNED	- VLF	REVISED	-
DRAWN	- DJW	REVISED	-
CHECKED	- MAG	REVISED	-
DATE	- 8-14-14	REVISED	-

STATE OF ILLINOIS  
DEPARTMENT OF TRANSPORTATION

SUMMARY OF QUANTITIES

SCALE: N/A SHEET 3 OF 9 SHEETS STA. TO STA.

F.A.P. RTE.	SECTION	COUNTY	TOTAL SHEETS	SHEET NO.
646	101 BR-3	WHITESIDE	130	7
CONTRACT NO.			64C17	
FED. ROAD DIST. NO. 2 ILLINOIS FED. AID PROJECT				

Rev. 11-6-14

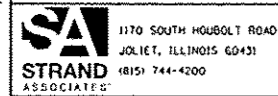
ACF ACBRF

CODE NO.	ITEM	UNIT	TOTAL QUANTITY	URBAN	
				CONST. CODE 80% FED 20% STATE ROADWAY 0004 RURAL	CONST. CODE 80% FED 20% STATE BRIDGE 0011 S. N. 098-0015
50800515	BAR SPLICERS	EACH	941		941
50901720	BICYCLE RAILING	FOOT	478	478	
51201600	FURNISHING STEEL PILES HP12X53	FOOT	4,701		4,701
51202305	DRIVING PILES	FOOT	4,701		4,701
51203600	TEST PILE STEEL HP12X53	EACH	2		2
51500100	NAME PLATES	EACH	1		1
52000110	PREFORMED JOINT STRIP SEAL	FOOT	378		378
52100010	ELASTOMERIC BEARING ASSEMBLY, TYPE I	EACH	16		16
52100520	ANCHOR BOLTS, 1"	EACH	64		64
58700300	CONCRETE SEALER	SO FT	3,921		3,921
59000200	EPOXY CRACK INJECTION	FOOT	100		100
59100100	GEOCOMPOSITE WALL DRAIN	SO YD	409		409
60260400	INLETS TO BE ADJUSTED WITH NEW TYPE 1 FRAME, CLOSED LID	EACH	2	2	
60261000	INLETS TO BE ADJUSTED WITH NEW TYPE 8 GRATE	EACH	2	2	

14  
+ SPECIALTY ITEM

Rev. 11-6-14

FILE NAME: s:\p1\ASB00-5399\6345\025\micro\sh\026\c17-sv-5001.dgn



1170 SOUTH HOUBOLT ROAD  
JOLIET, ILLINOIS 60431  
(815) 744-4200

USER NAME	DESIGNED	REVISIONS
brianf	- VLF	-
	DRAWN	- DJW
	CHECKED	- MAG
	DATE	- 8-14-14

STATE OF ILLINOIS  
DEPARTMENT OF TRANSPORTATION

SUMMARY OF QUANTITIES

SCALE: N/A	SHEET 4	OF 9	SHEETS	STA.	TO STA.
------------	---------	------	--------	------	---------

F.A.P. RTE.	SECTION	COUNTY	TOTAL SHEETS	SHEET NO.
646	101 BR-3	WHITESIDE	130	8
CONTRACT NO. 64C17				

FED. ROAD DIST. NO. 2 ILLINOIS FED. AID PROJECT

ACE ACRF

CODE NO.	ITEM	UNIT	URBAN TOTAL QUANTITY	CONST. CODE	
				80% FED 20% STATE ROADWAY 0004 RURAL	80% FED 20% STATE BRIDGE 0011 S.N. 098-0015
60610400	COMBINATION CONCRETE CURB AND GUTTER, TYPE M-6.24	FOOT	2,319.0	2,319.0	
60618300	CONCRETE MEDIAN SURFACE, 4 INCH	SO FT	4,691	4,691	
60623200	CONCRETE MEDIAN, TYPE SM-6.24	SO FT	4,596	4,596	
+ 63000003	STEEL PLATE BEAM GUARDRAIL, TYPE A, 9 FOOT POSTS	FOOT	196	196	
+ 63100045	TRAFFIC BARRIER TERMINAL, TYPE 2	EACH	1	1	
+ 63100085	TRAFFIC BARRIER TERMINAL, TYPE 6	EACH	3	3	
+ 63100167	TRAFFIC BARRIER TERMINAL, TYPE 1 (SPECIAL) TANGENT	EACH	2	2	
63200310	GUARDRAIL REMOVAL	FOOT	205	205	
+ 63500105	DELINEATORS	EACH	2	2	
63800920	MODULAR GLARE SCREEN SYSTEM, TEMPORARY	FOOT	401	401	
66700305	PERMANENT SURVEY MARKERS, TYPE II	EACH	2	2	
67000400	ENGINEER'S FIELD OFFICE, TYPE A	CAL MO	9	9	
67100100	MOBILIZATION	L SUM	1	1	
70100410	TRAFFIC CONTROL AND PROTECTION, STANDARD 701416	EACH	1	1	

+ SPECIALTY ITEM

FILE NAME: H:\14152000-6389461025\14152000\SNA\DEBACT17-14152001.dgn

**SA**  
1170 SOUTH HOUBOLT ROAD  
JOLIET, ILLINOIS 60431  
**STRAND**  
ASSOCIATES  
(815) 744-4200

USER NAME	DESIGNED	REVISIONS
• brianf	- VLF	-
	DRAWN	REVISIONS
	- DJW	-
	CHECKED	REVISIONS
	- MAG	-
	DATE	REVISIONS
	- 8-14-14	-

**STATE OF ILLINOIS  
DEPARTMENT OF TRANSPORTATION**

**SUMMARY OF QUANTITIES**

SCALE: N/A	SHEET 5	OF 9	SHEETS	STA.	TO STA.
------------	---------	------	--------	------	---------

Rev. 11-6-14

F.A.P. RTE.	SECTION	COUNTY	TOTAL SHEETS	SHEET NO.
646	101 BR-3	WHITESIDE	130	9
				CONTRACT NO. 64C17
FED. ROAD DIST. NO. 2 ILLINOIS FED. AID PROJECT				

ACF ACBRF

CODE NO.	ITEM	UNIT	TOTAL QUANTITY	URBAN	
				CONST. CODE 80% FED 20% STATE ROADWAY	CONST. CODE 80% FED 20% STATE BRIDGE
				0004	0011
				RURAL	S. N. 098-0015
70102625	TRAFFIC CONTROL AND PROTECTION, STANDARD 701606	L SUM	1	1	
70102630	TRAFFIC CONTROL AND PROTECTION, STANDARD 701601	L SUM	1	1	
70102635	TRAFFIC CONTROL AND PROTECTION, STANDARD 701701	L SUM	1	1	
70102640	TRAFFIC CONTROL AND PROTECTION, STANDARD 701801	L SUM	1	1	
70300210	TEMPORARY PAVEMENT MARKING LETTERS AND SYMBOLS	SO FT	46.8	46.8	
70300220	TEMPORARY PAVEMENT MARKING - LINE 4"	FOOT	22,577	22,577	
70300250	TEMPORARY PAVEMENT MARKING - LINE 8"	FOOT	348	348	
70300280	TEMPORARY PAVEMENT MARKING - LINE 24"	FOOT	34	34	
70301000	WORK ZONE PAVEMENT MARKING REMOVAL	SO FT	6,471	6,471	
70400100	TEMPORARY CONCRETE BARRIER	FOOT	2,906	2,906	
70400200	RELOCATE TEMPORARY CONCRETE BARRIER	FOOT	2,555	2,555	
70600250	IMPACT ATTENUATORS, TEMPORARY (NON- REDIRECTIVE), TEST LEVEL 3	EACH	4	4	
70600260	IMPACT ATTENUATORS, TEMPORARY (FULLY REDIRECTIVE, NARROW), TEST LEVEL 3	EACH	1	1	
70600350	IMPACT ATTENUATORS, RELOCATE (NON- REDIRECTIVE), TEST LEVEL 3	EACH	2	2	

+ SPECIALTY ITEM

Rev. 11-6-14

FILE NAME : s:\p1\6302--6399\6346\025\Micro\1\BNA\026417-INT-001.dgn



USER NAME : brianf	DESIGNED - VLF	REVISED -
DESIGNED - DJW	REVISED -	
CHECKED - MAG	REVISED -	
DATE - 8-14-14	REVISED -	

STATE OF ILLINOIS  
DEPARTMENT OF TRANSPORTATION

SUMMARY OF QUANTITIES			
SCALE: N/A	SHEET 6	OF 9 SHEETS	STA. TO STA.

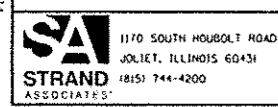
F.A.P. RATE	SECTION	COUNTY	TOTAL SHEETS	SHEET NO.
646	101 BR-3	WHITESIDE	130	10
CONTRACT NO. 64C17			FED. ROAD DIST. NO. 2 ILLINOIS FED. AID PROJECT	

ACF ACRF

CODE NO.	ITEM	UNIT	URBAN TOTAL QUANTITY	CONST. CODE	
				80% FED 20% STATE	80% FED 20% STATE
				ROADWAY	BRIDGE
				0004 RURAL	0011 S.N. 098-0015
+ 78001100	PAINT PAVEMENT MARKING - LETTERS AND SYMBOLS	SO FT	93.6	93.6	
+ 78001110	PAINT PAVEMENT MARKING - LINE 4"	FOOT	7,053	7,053	
+ 78001130	PAINT PAVEMENT MARKING - LINE 6"	FOOT	1,878	1,878	
+ 78001140	PAINT PAVEMENT MARKING - LINE 8"	FOOT	670	670	
+ 78001180	PAINT PAVEMENT MARKING - LINE 24"	FOOT	32	32	
+ 78100100	RAISED REFLECTIVE PAVEMENT MARKER	EACH	36	36	
	78100200 TEMPORARY RAISED REFLECTIVE PAVEMENT MARKER	EACH	212	212	
+ 78100300	REPLACEMENT REFLECTOR	EACH	107	107	
+ 78200410	GUARDRAIL MARKERS, TYPE A	EACH	12	12	
+ 78200520	BARRIER WALL MARKERS, TYPE B	EACH	156	156	
+ 78201000	TERMINAL MARKER - DIRECT APPLIED	EACH	2	2	
	78300100 PAVEMENT MARKING REMOVAL	SO FT	3,820	3,820	
	78300200 RAISED REFLECTIVE PAVEMENT MARKER REMOVAL	EACH	6	6	
	X4400110 TEMPORARY PAVEMENT REMOVAL	SO YD	1,430	1,430	

+ SPECIALTY ITEM

FILE NAME: s:\p1\16300-5399\6346\B25\H\proj\sh\10264017-sh-5001.dgn



USER NAME: brianf	DESIGNED: VLF	REVISED: -
PLOT SCALE: 20,000 / 1" = 1 mi	DRAWN: DJW	REVISED: -
PLOT DATE: 8/14/2014	CHECKED: MAG	REVISED: -
	DATE: 8-14-14	REVISED: -

STATE OF ILLINOIS  
DEPARTMENT OF TRANSPORTATION

SUMMARY OF QUANTITIES			
SCALE:	SHEET	OF	SHEETS
N/A	7	9	
			STA. TO STA.

F.A.P. RTE. 646	SECTION 101 BR-3	COUNTY WHITESIDE	TOTAL SHEETS 130	SHEET NO. 11
CONTRACT NO. 64C17				
FED. ROAD DIST. NO. 2 ILLINOIS FED. AID PROJECT				

Rev. 11-6-14



ACF ACBRF

CODE NO.	ITEM	UNIT	TOTAL QUANTITY	URBAN	
				CONST. CODE	CONST. CODE
				80% FED 20% STATE ROADWAY	80% FED 20% STATE BRIDGE
				0004 RURAL	0011 S.N. 098-0015
X4401198	HOT-MIX ASPHALT SURFACE REMOVAL, VARIABLE DEPTH	SO YD	783	783	
X4402020	CONCRETE MEDIAN SURFACE REMOVAL	SO FT	7,210	7,210	
X5121800	PERMANENT STEEL SHEET PILING	SO FT	12,893		12,893
X5860110	GRANULAR BACKFILL FOR STRUCTURES	CU YD	545		545
X7010216	TRAFFIC CONTROL AND PROTECTION, (SPECIAL)	L SUM	1	1	
+ X8410102	TEMPORARY LIGHTING SYSTEM	L SUM	1	1	
Z0001900	ASBESTOS BEARING PAD REMOVAL	EACH	80		80
Z0004552	APPROACH SLAB REMOVAL	SO YD	834	834	
Z0004638	PAVEMENT BREAKING	SO YD	1,777	1,777	
Z0012754	STRUCTURAL REPAIR OF CONCRETE (DEPTH EQUAL TO OR LESS THAN 5 INCHES)	SO FT	50		50
Z0013798	CONSTRUCTION LAYOUT	L SUM	1	1	
Z0034210	MECHANICALLY STABILIZED EARTH RETAINING WALL	SO FT	2,472		2,472
Z0046304	PIPE UNDERDRAINS FOR STRUCTURES 4"	FOOT	304		304
Z0062456	TEMPORARY PAVEMENT	SO YD	1,430	1,430	

14

Rev. 11-6-14

FILE NAME: I:\Projects\2009-6399\6346\025\MicroStation\0284C17.dwg



1170 SOUTH HOUBOLT ROAD JOLIET, ILLINOIS 60431 (815) 744-4200	USER NAME: brianf	DESIGNED - VLF	REVISOR -
PLOT SCALE: 20,000 / 1 in.	DRAWN - DJW	CHECKED - MAG	REVISIONS -
PLOT DATE: 8/14/2014	DATE - 8-14-14		

**STATE OF ILLINOIS  
DEPARTMENT OF TRANSPORTATION**

SUMMARY OF QUANTITIES			
SCALE: N/A	SHEET 8	OF 9 SHEETS	STA. TO STA.

F.A.P. RTE. 646	SECTION 101 BR-3	COUNTY WHITESIDE	TOTAL SHEETS 130	SHEET NO. 12
FED. ROAD DIST. NO. 2 ILLINOIS FED. AID PROJECT			CONTRACT NO. 64C17	

ACF ACBRF

CODE NO.	ITEM	UNIT	URBAN		CONST. CODE	
			TOTAL QUANTITY		80% FED	80% FED
					20% STATE	20% STATE
					ROADWAY	BRIDGE
			0004	0011		
			RURAL	S. N. 098-0015		
Z0073002	TEMPORARY SOIL RETENTION SYSTEM	50 FT	2,795		2,795	

FILE NAME = S:\JDL\6288--6399\6246025\hh\op\Shn\0264C17-ah-5001.dgn

**SA STRAND ASSOCIATES**  
 1170 SOUTH HOUBOLT ROAD  
 JOLIET, ILLINOIS 60431  
 (815) 744-4200

USER NAME \* brianf  
 PLOT SCALE \* 20,0000 1" = 100'  
 PLOT DATE \* 8/14/2014

DESIGNED - VLF	REVISED -
DRAWN - DJW	REVISED -
CHECKED - MAG	REVISED -
DATE - 8-14-14	REVISED -

**STATE OF ILLINOIS  
DEPARTMENT OF TRANSPORTATION**

**SUMMARY OF QUANTITIES**

SCALE: N/A    SHEET 9 OF 9 SHEETS    STA.    TO STA.

F.A.P. RTE.	SECTION	COUNTY	TOTAL SHEETS	SHEET NO.
646	101 BR-3	WHITESIDE	130	13
FED. ROAD DIST. NO. 2			ILLINOIS	FED. AID PROJECT
			CONTRACT NO.	64C17

Rev 11-6-14