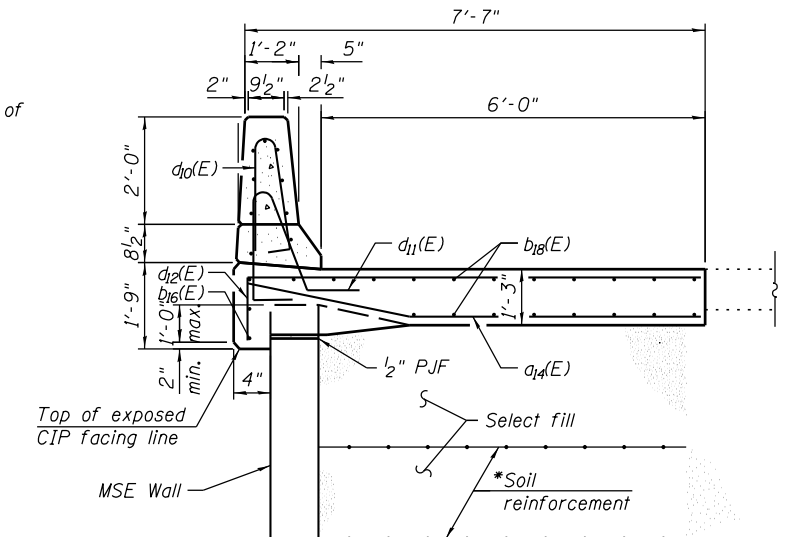


Notes:
 See Sheet 15 of 35 for Views E-E.
 a₁₀(E) and a₁₁(E) bar spacings measured along C Rdwy.
 See Sheet 16 of 35 for Sections G-G, H-H, and I-I.
 Bars indicated thus 20x3-#5 etc. indicates 20 lines of bars with 3 lengths per line.
 Median to be constructed in Stage II.
 Tilt #9 b₁₁(E) bars as required to maintain clearance.

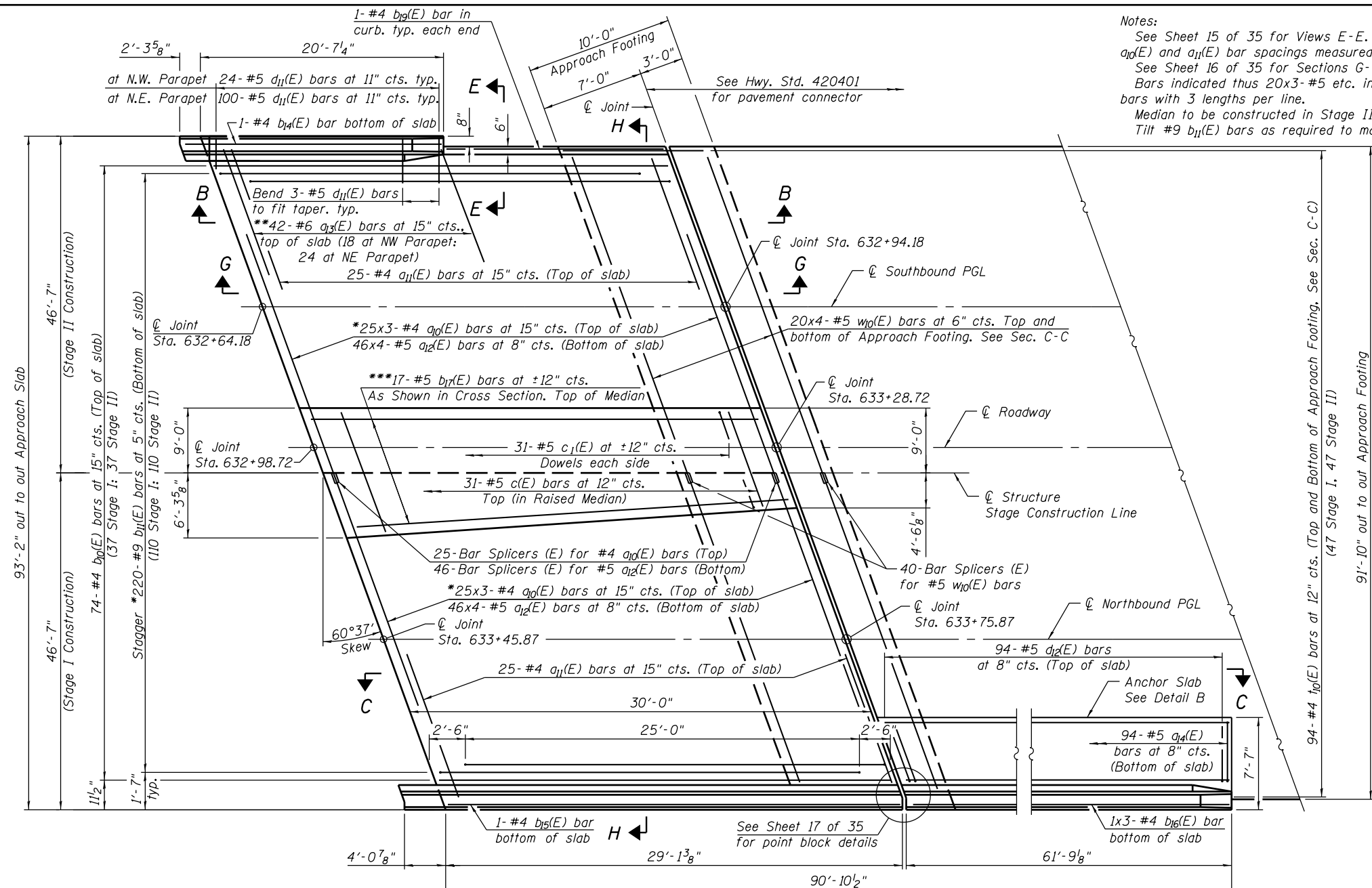


DETAIL B
 *The MSE Wall supplier's internal stability design shall account for the anchorage slab's bearing pressure surcharge of 1.0 ksf and horizontal sliding force of 0.5 kips/ft. of wall

**NORTH APPROACH
 BILL OF MATERIAL**

Bar	No.	Size	Length	Shape
a ₁₀ (E)	150	#4	25'-6"	—
a ₁₁ (E)	50	#4	25'-11"	—
a ₁₂ (E)	368	#5	25'-9"	—
a ₁₃ (E)	42	#6	6'-6"	—
a ₁₄ (E)	94	#5	7'-3"	—
b ₁₀ (E)	74	#4	29'-8"	—
b ₁₁ (E)	220	#9	29'-9"	—
b ₁₄ (E)	1	#4	20'-3"	—
b ₁₅ (E)	1	#4	28'-9"	—
b ₁₆ (E)	3	#4	21'-11"	—
b ₁₇ (E)	17	#5	29'-8"	—
b ₁₈ (E)	48	#4	26'-6"	—
b ₁₉ (E)	1	#5	9'-1"	—
c(E)	31	#5	31'-6"	—
c ₁ (E)	62	#5	1'-7"	—
d ₁₀ (E)	132	#5	5'-7"	—
d ₁₁ (E)	124	#5	7'-11"	—
d ₁₂ (E)	94	#5	8'-6"	—
e ₁₁ (E)	14	#4	11'-1"	—
e ₁₂ (E)	28	#4	15'-0"	—
e ₁₄ (E)	1	#8	22'-7"	—
e ₁₅ (E)	2	#8	33'-4"	—
e ₁₆ (E)	14	#4	16'-3"	—
e ₁₇ (E)	1	#8	32'-10"	—
e ₁₈ (E)	1	#4	22'-7"	—
e ₁₉ (E)	2	#4	31'-9"	—
e ₂₀ (E)	1	#4	32'-10"	—
t ₁₀ (E)	188	#4	20'-0"	—
w ₁₀ (E)	320	#5	25'-6"	—
Concrete Superstructure		Cu. Yd.	207	
Concrete Structures		Cu. Yd.	58	
Reinforcement Bars, Epoxy Coated		Pound	44,300	****
Reinforcement Bars, Epoxy Coated		Pound	11,030	*****

**** Included in Superstructure quantity
 ***** Included in Substructure quantity

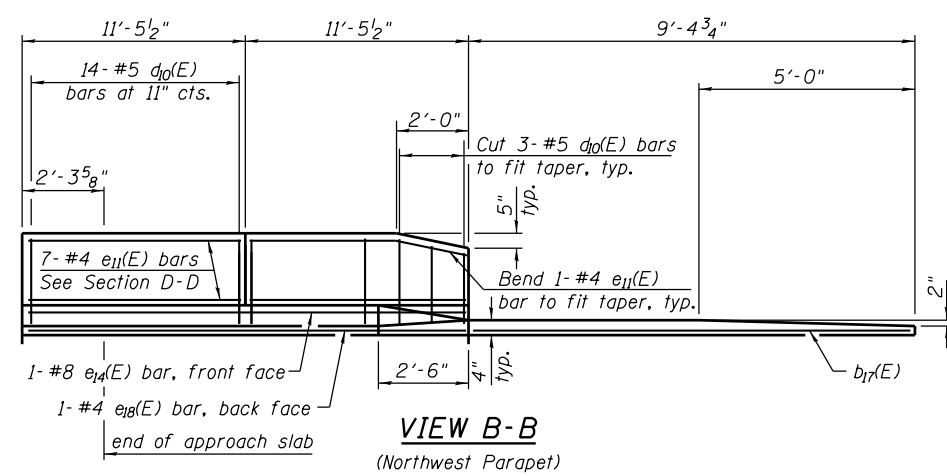


NORTH PLAN

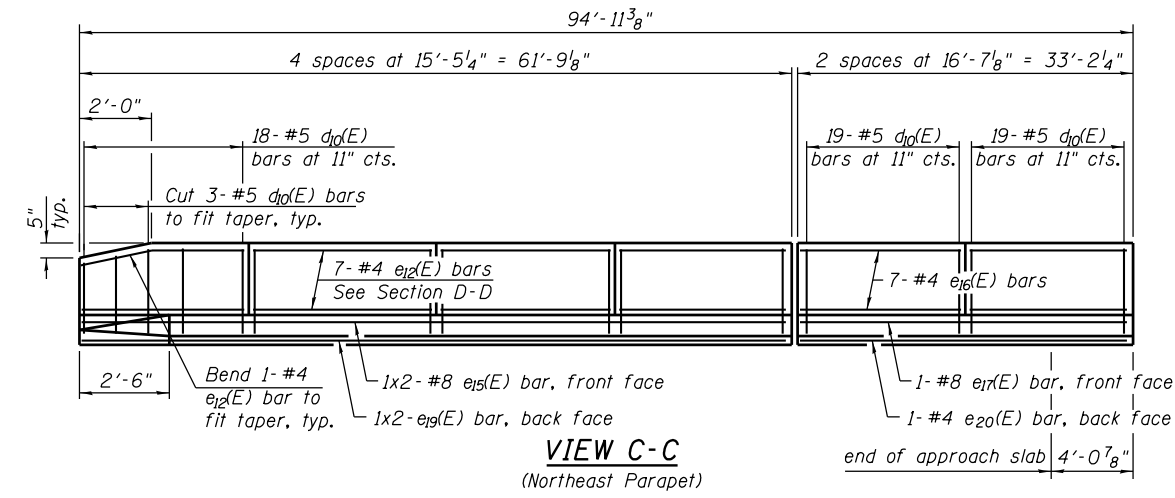
MIN. BAR LAP
 (Approach Slab)
 #4 bar = 2'-4"
 #5 bar = 2'-7"

MIN. BAR LAP
 (Parapet)
 #4 bar = 2'-0"
 #8 bar = 5'-2"

* Lap with a₁₁(E) bars.
 ** Space between a₁₀(E) and a₁₁(E) bars, typ. each parapet.
 *** Rotate to fit b₁₇(E) bars.



VIEW B-B
 (Northwest Parapet)



VIEW C-C
 (Northeast Parapet)

FILE NAME = s:\p1\6380--6395\6346\025\macro\Sh1\Structural\Plans\0980015-64C17-014-BAP.dgn