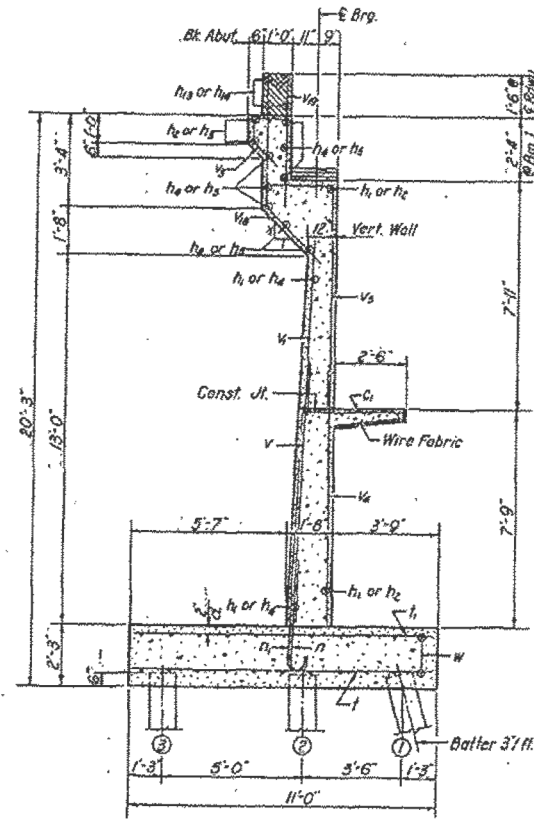
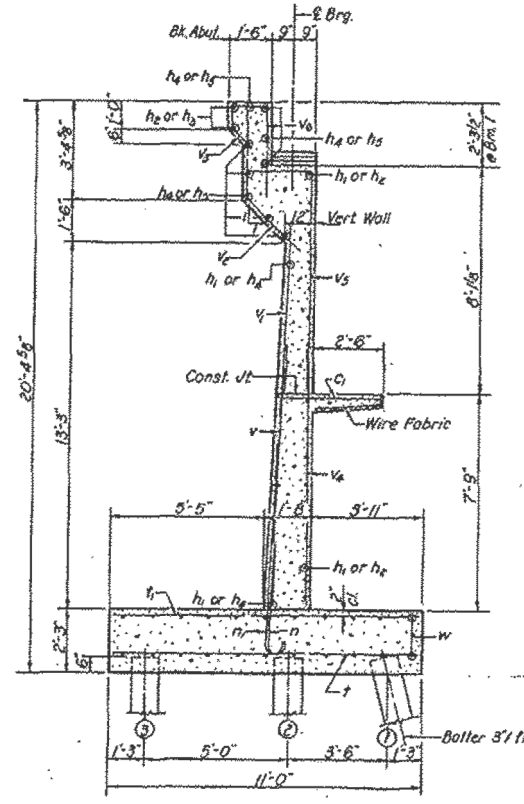


STATE OF ILLINOIS  
DEPARTMENT OF PUBLIC WORKS & BUILDINGS  
DIVISION OF HIGHWAYS

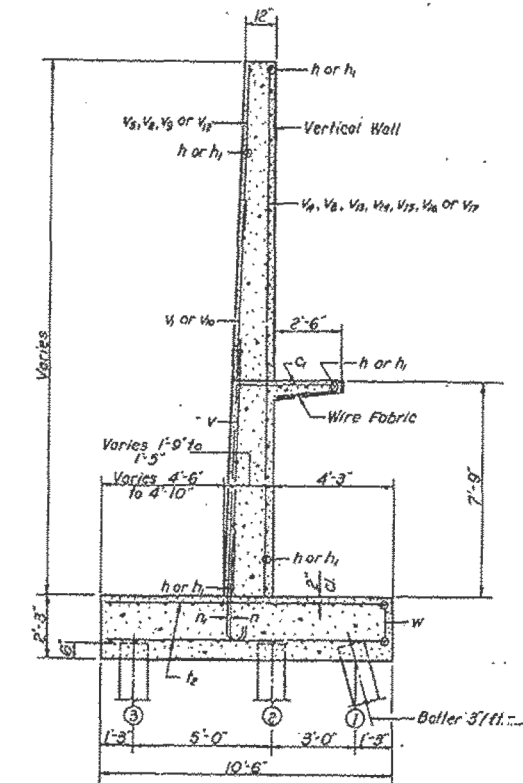
PROJECT NO.	SECTION	QUANTITY	TOTAL SHEETS	SHEET NO.
68	(D1) D-1	WHITE SIDE	31	12
SHEET NO. 6				
10 SHEETS				



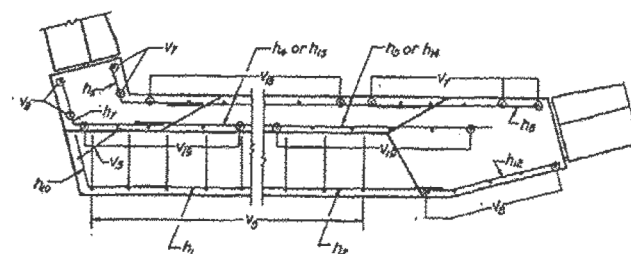
SECTION THRU N. ABUT.



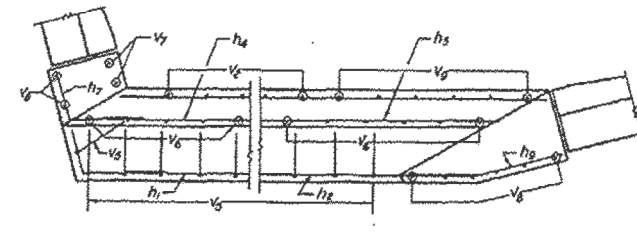
SECTION THRU S. ABUT.



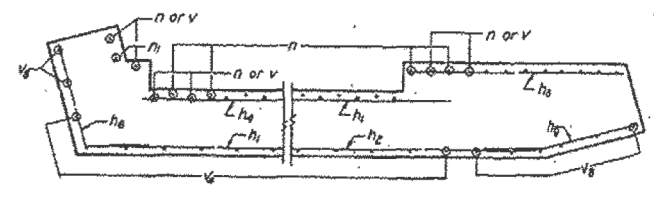
SECTION THRU WINGS



CORNER REINF.  
(Top N. Abut.)



CORNER REINF.  
(Top S. Abut.)



CORNER REINF.  
(Bottom)

DESIGNED	Walter Perry	EXAMINED	JAN 01 1966
CHECKED	[Signature]	PASSED	[Signature]
DRAWN	J.L. Armstrong	APPROVED	[Signature]
CHECKED	[Signature]		

Note: All bars shall have 1/2" clearance except as noted. Pour sidewalk monolithically with stem.

ABUTMENT DETAILS  
S.B.I. RT. 88 (FA. 40) SEC. 1018-1  
WHITESIDE COUNTY  
STA. 78+50

FOR INFORMATION ONLY

FILE NAME = s:\p\1\6300--6395\6346\025\Micro\Sh\Structural\Plans\0980015-64C17-034-EPLANS.dgn