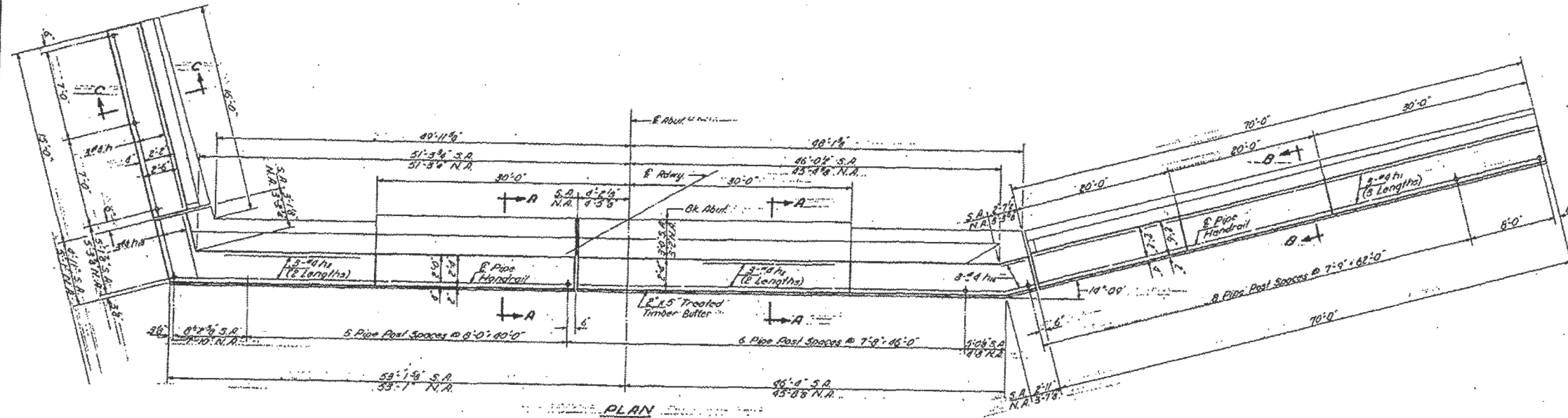
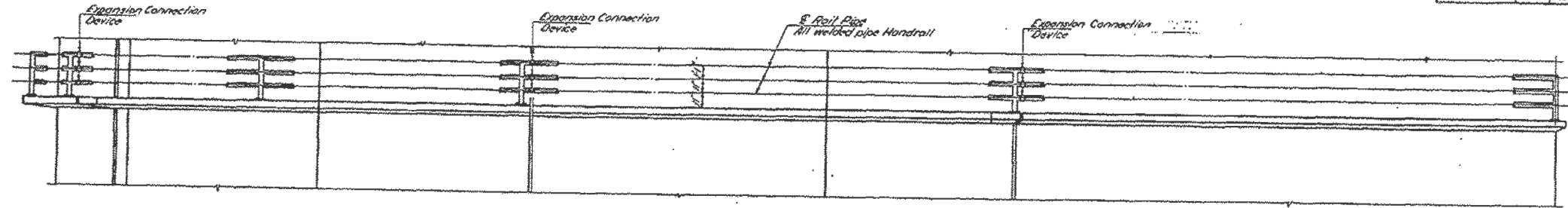


STATE OF ILLINOIS
DEPARTMENT OF PUBLIC WORKS & BUILDINGS
DIVISION OF HIGHWAYS

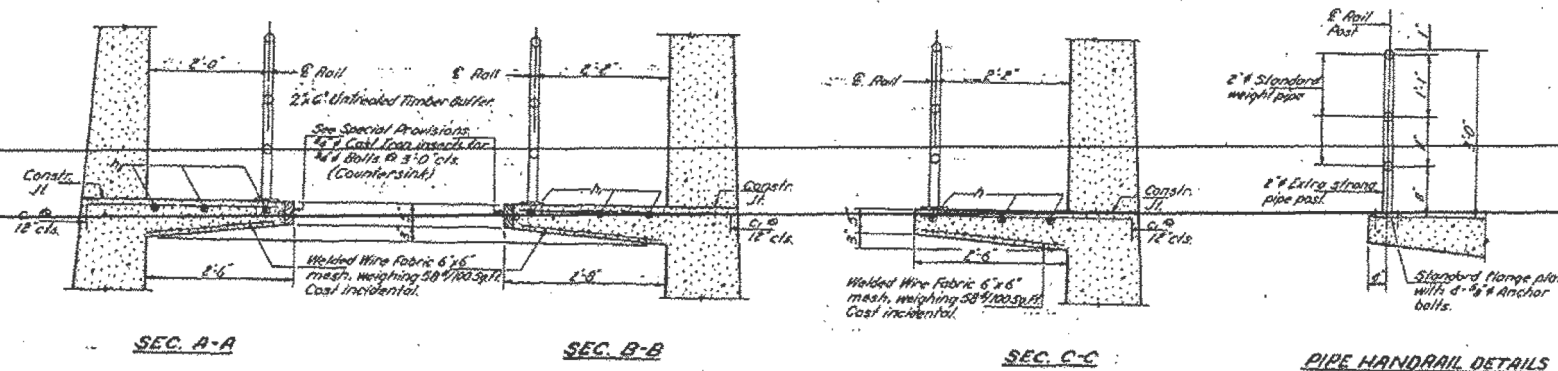
PROJECT NO.	SECTION	COUNTY	TOTAL SHEETS	SHEET NO.
64C17	101B-1	WHITESIDE	13	7
10 SHEETS				



BILL OF MATERIAL

Bar No.	Size	Length	Shape
F1	#6	14'-5"	---
F2	#6	28'-0"	---
F3	#4	25'-3"	---
F4	#4	8'-6"	---
F5	#4	2'-0"	---
Class II Concrete			Cu. Yds. 18.4
Reinforcement Bars			Lbs. 780
Pipe Handrail			Lin. Ft. 380

Note: c. bar billed in Abutment bill of material.



DESIGNED	Walt Perry
CHECKED	[Signature]
DRAWN	L. Worless
CHECKED	[Signature]

EXAMINED	[Signature]
PASSED	[Signature]
APPROVED	[Signature]

SIDEWALK & PIPE HANDRAIL
S.B.T. RT. 89 - SEC. 101B-1
WHITESIDE COUNTY
S.T.A. 78+50

FOR INFORMATION ONLY

FILE NAME = s:\p\1\6300-6399\6346\025\Micro\Str\Struct\Struct\1\6347-934-EPLANS.dgn