

### HORIZONTAL CONTROL POINTS

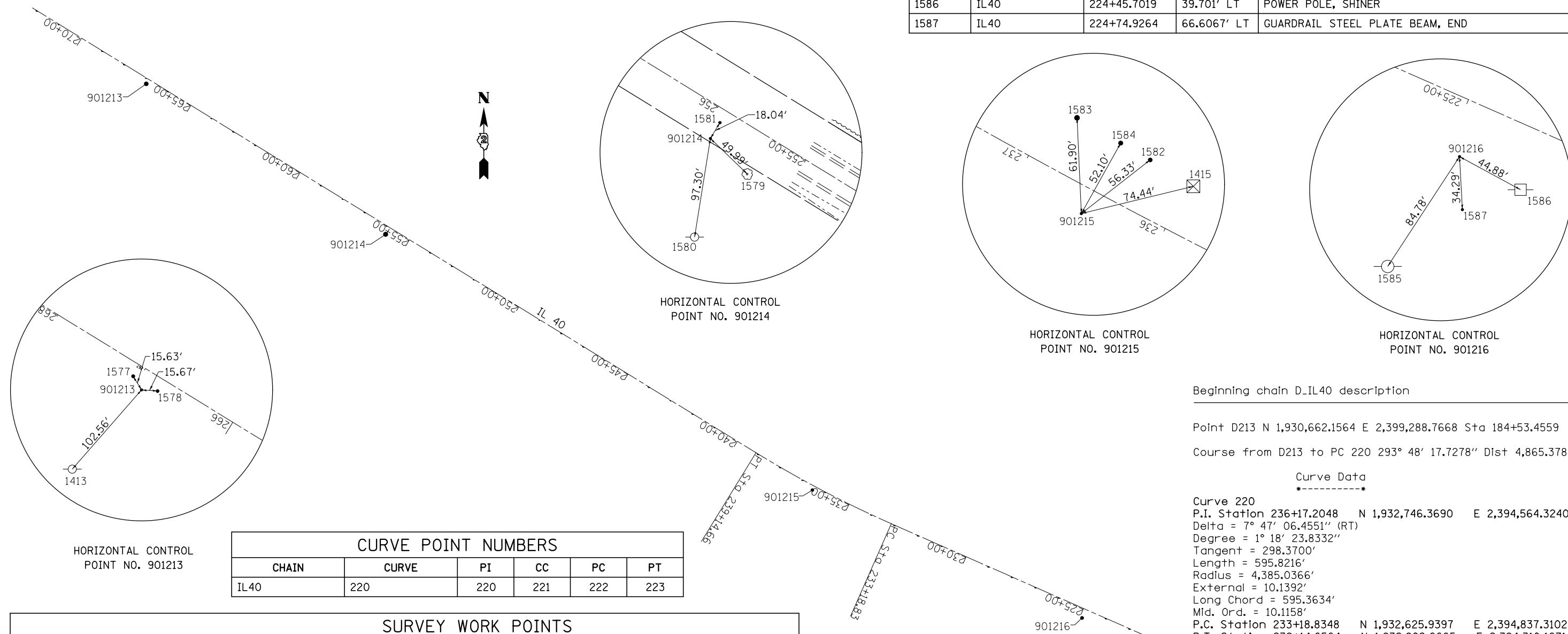
POINT	NORTH	EAST	ELEVATION	CHAIN	STATION	OFFSET	DESCRIPTION
901213	1934340.8550	2391933.7820	744.3090	IL40	266+92.2815	19.7661' LT	PHOTO CONTROL H. & V., PIN
901214	1933754.0160	2392866.8180	725.6780	IL40	255+90.0962	30.8864' LT	PHOTO CONTROL H. & V., PIN
901215	1932757.2300	2394529.7770	734.1020	IL40	236+52.2472	16.7246' LT	PHOTO CONTROL H. & V., PIN
901216	1932258.6220	2395580.6950	734.3790	IL40	224+90.4352	36.0203' LT	PHOTO CONTROL H. & V., PIN

### BENCH MARKS

POINT	NORTH	EAST	ELEVATION	CHAIN	STATION	OFFSET	DESCRIPTION
1413	1934263.6210	2391866.2960	745.703	IL40	267+09.3092	120.9072' LT	TELEGRAPH POLE, 60D NAIL
1415	1932774.8240	2394602.1030	740.684	IL40	235+96.3701	32.5680' RT	R.O.W. MARKER, TOP

### REFERENCE TIES

POINT	CHAIN	STATION	OFFSET	DESCRIPTION
1577	IL40	267+06.2031	12.6691' LT	PAVEMENT, SHINER
1578	IL40	266+78.3794	12.5293' LT	PAVEMENT, SHINER
1579	IL40	255+41.4521	41.7389' LT	TREE DECIDUOUS
1580	IL40	255+52.9161	120.7972' LT	TELEGRAPH POLE, SHINER
1581	IL40	255+90.2340	12.8476' LT	PAVEMENT - EDGE, BITUMINOUS
1582	IL40	236+29.2359	34.7085' RT	FENCE POST, SHINER
1583	IL40	236+84.1715	36.3464' RT	FENCE POST, SHINER
1584	IL40	236+51.3316	35.3698' RT	FENCE POST, SHINER
1585	IL40	225+04.2212	119.6745' LT	TELEGRAPH POLE, SHINER
1586	IL40	224+45.7019	39.701' LT	POWER POLE, SHINER
1587	IL40	224+74.9264	66.6067' LT	GUARDRAIL STEEL PLATE BEAM, END



HORIZONTAL CONTROL POINT NO. 901213

HORIZONTAL CONTROL POINT NO. 901214

HORIZONTAL CONTROL POINT NO. 901215

HORIZONTAL CONTROL POINT NO. 901216

### CURVE POINT NUMBERS

CHAIN	CURVE	PI	CC	PC	PT
IL40	220	220	221	222	223

### SURVEY WORK POINTS

POINT	NORTH	EAST	ELEVATION	CHAIN	STATION	OFFSET	DESCRIPTION
1001	1933308.0073	2393624.5547	706.096	IL40	247+11.0062	13.8733' LT	TRAVERSE STATION, NAIL
1002	1933140.9619	2393974.5793	710.761	IL40	243+25.3443	27.1906' RT	TRAVERSE STATION, NAIL
1003	1933361.3894	2393627.5088	699.338	IL40	247+36.4534	33.1460' RT	BILL HOLT PIN AND CAP

Beginning chain D\_IL40 description

Point D213 N 1,930,662.1564 E 2,399,288.7668 Sta 184+53.4559  
 Course from D213 to PC 220 293° 48' 17.7278" Dist 4,865.3789'

#### Curve Data

Curve 220  
 P.I. Station 236+17.2048 N 1,932,746.3690 E 2,394,564.3240  
 Delta = 7° 47' 06.4551" (RT)  
 Degree = 1° 18' 23.8332"  
 Tangent = 298.3700'  
 Length = 595.8216'  
 Radius = 4,385.0366'  
 External = 10.1392'  
 Long Chord = 595.3634'  
 Mid. Ord. = 10.1158'  
 P.C. Station 233+18.8348 N 1,932,625.9397 E 2,394,837.3102  
 P.T. Station 239+14.6564 N 1,932,902.6665 E 2,394,310.1671  
 C.C. N 1,936,637.9193 E 2,396,607.2159

Course from PT 220 to D232 301° 35' 24.1829" Dist 4,139.5166'

Point D232 N 1,935,071.1026 E 2,390,784.0527 Sta 280+54.1730