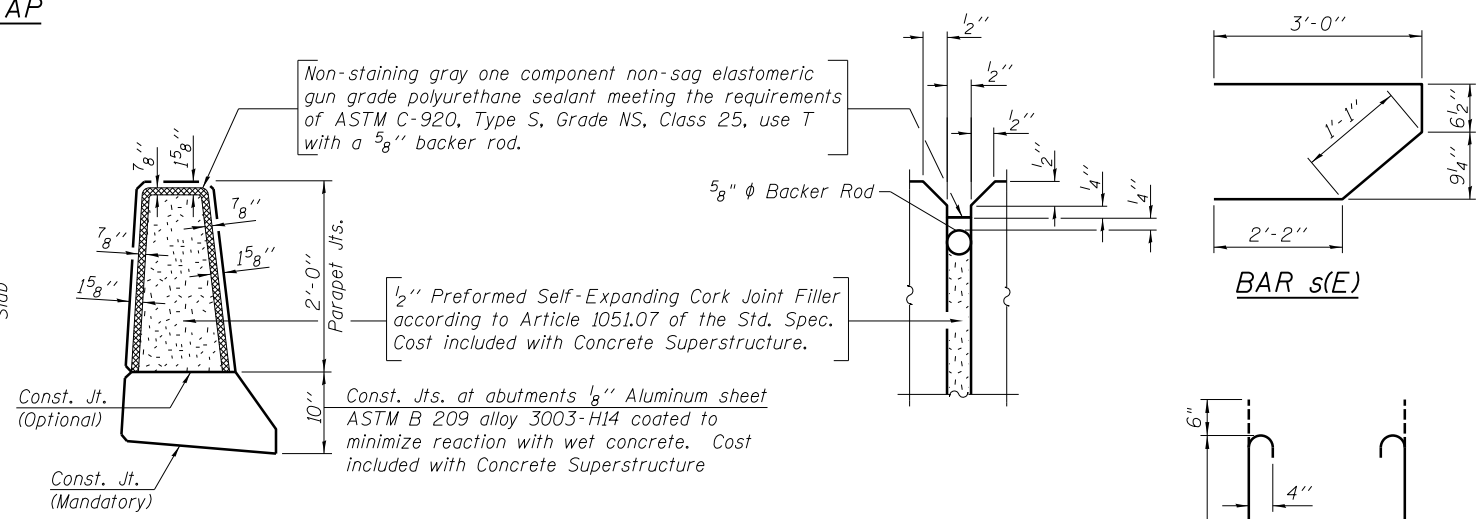
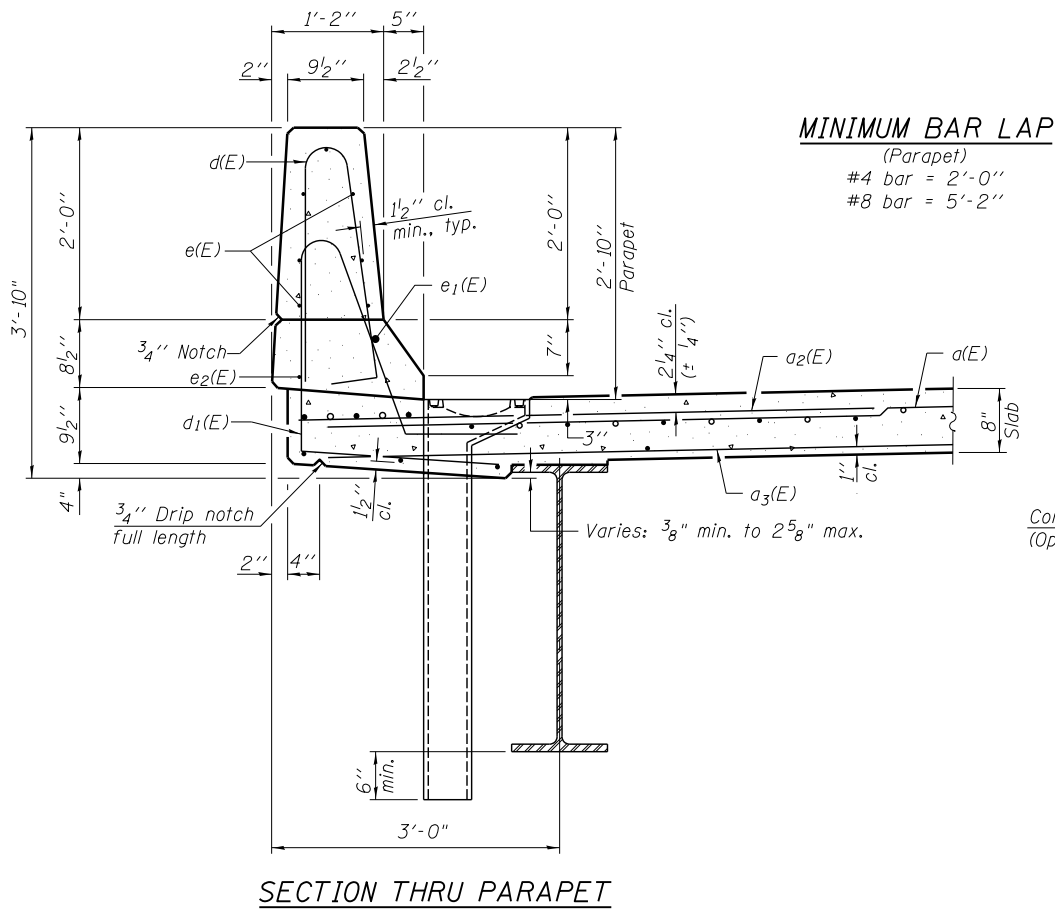


INSIDE ELEVATION OF PARAPET

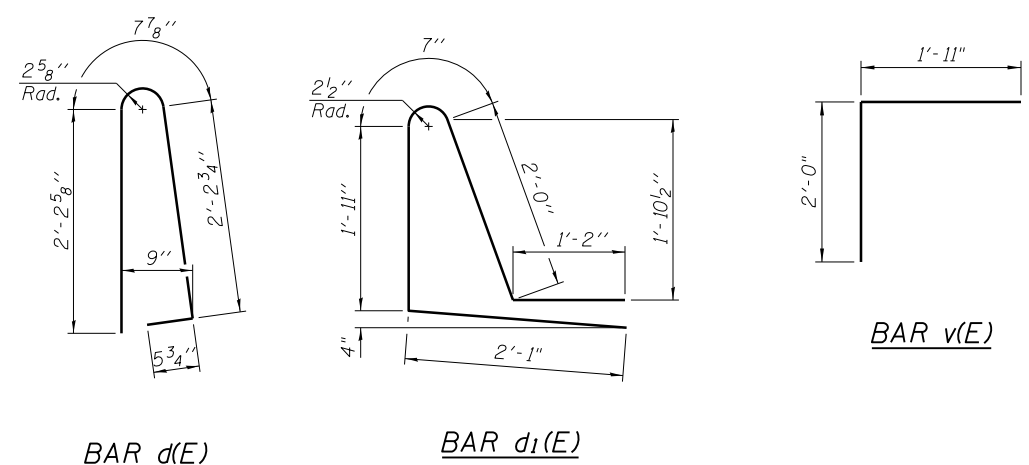


PARAPET JOINT DETAILS

SUPERSTRUCTURE BILL OF MATERIAL

Bar	No.	Size	Length	Shape
d(E)	312	#5	19'-0"	—
a ₁ (E)	110	#5	21'-6"	—
a ₂ (E)	312	#6	6'-6"	—
a ₃ (E)	110	#5	15'-8"	—
a ₄ (E)	16	#5	1'-6"	—
b(E)	152	#5	25'-1"	—
b ₁ (E)	155	#5	20'-9"	—
d(E)	200	#5	5'-7"	┘
d ₁ (E)	200	#5	7'-9"	┘
e(E)	84	#4	14'-9"	—
e ₁ (E)	8	#8	26'-6"	—
e ₂ (E)	8	#4	24'-2"	—
m(E)	20	#6	19'-3"	—
m ₁ (E)	24	#6	8'-7"	—
m ₂ (E)	10	#6	5'-7"	—
m ₃ (E)	4	#6	2'-8"	—
s(E)	72	#5	6'-10"	┘
s ₁ (E)	62	#4	10'-4"	┘
v(E)	72	#5	3'-11"	┘
Reinforcement Bars, Epoxy Coated			Pound	27,380
Concrete Superstructure			Cu. Yds.	131.2

Bars indicated thus: 1x4- #8 etc. indicates 1 line of bars with 4 lengths per line.



BAR d(E)

BAR d₁(E)

BAR v(E)

FILE NAME = ...E4DB4-SN0080051-008-SupDetails.dgn



USER NAME = SAW	DESIGNED - PMM	REVISED -
PLOT SCALE = 0:2.0000 't' / in.	CHECKED - DAZ	REVISED -
PLOT DATE = 8/1/2013	DRAWN - SAW	REVISED -
	CHECKED - PMM	REVISED -

**STATE OF ILLINOIS
DEPARTMENT OF TRANSPORTATION**

**SUPERSTRUCTURE DETAILS
S.N. 008-0051**

SHEET NO. 8 OF 19 SHEETS

F.A.P. RTE.	SECTION	COUNTY	TOTAL SHEETS	SHEET NO.
646	5BR-3	CARROLL	84	31
CONTRACT NO. 64DB4				

ILLINOIS FED. AID PROJECT