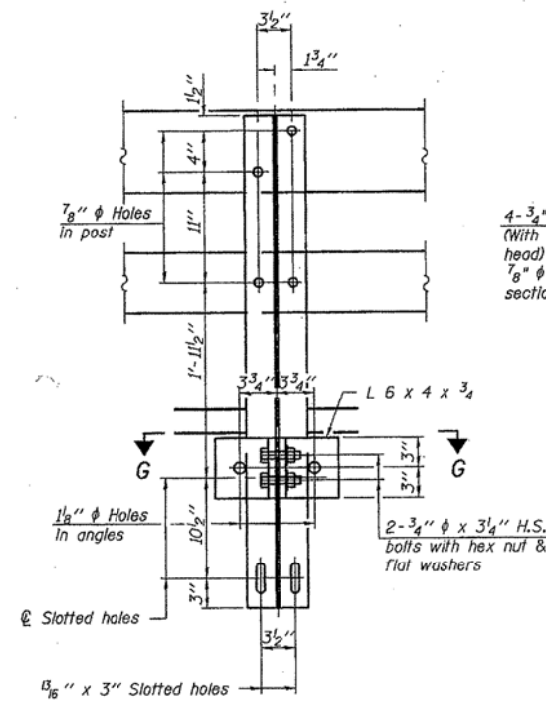
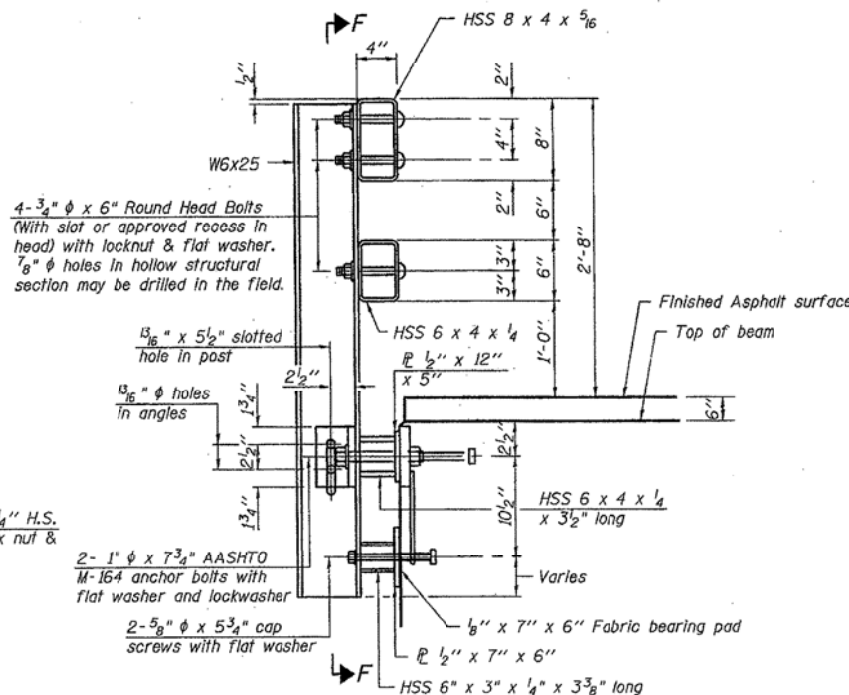


STATE OF ILLINOIS
DEPARTMENT OF TRANSPORTATION

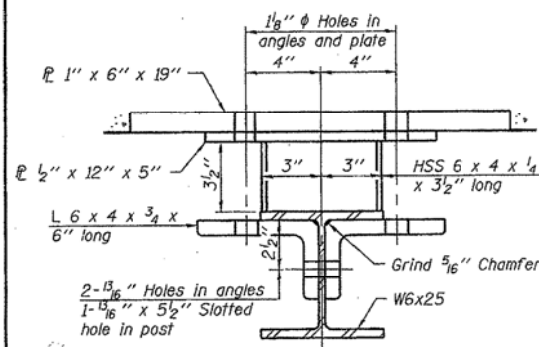
ROUTE NO.	SECTION	COUNTY	SHEET	NO.	SHEET NO. 8
FAP 646		CARROLL	19		8 SHEETS
FED. ROAD DIST. NO. 7		BLDG. NO.	FED. AID PROJECT		



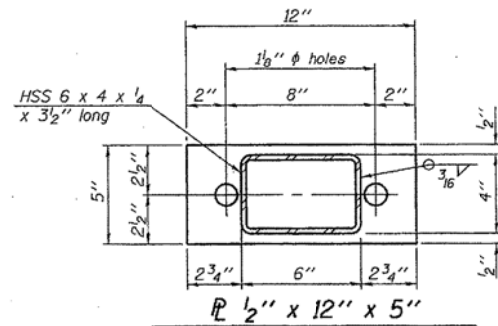
SECTION F-F



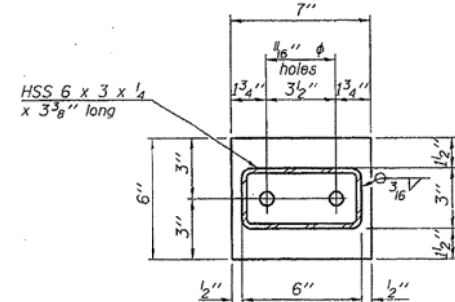
SECTION AT RAIL POST ON APPROACH SLAB



SECTION G-G

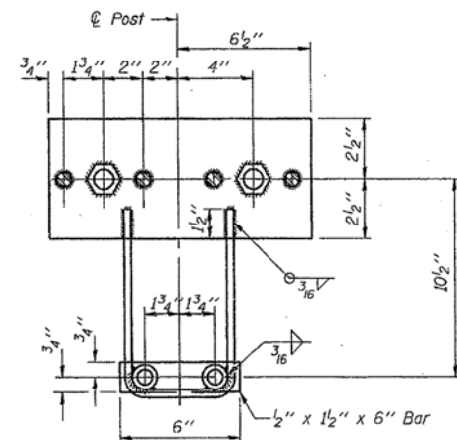


1 1/2" x 12" x 5"



1 1/2" x 7" x 6"

(6'-3" Maximum Post Spacing) (5" minimum to 7 1/8" maximum CWS thickness)



EXISTING ANCHOR DEVICE IN APPROACH

* Threaded areas shall be plugged or blocked off during casting of beam. Galvanized after fabrication.

See Sheet 7 of 8 for additional details and notes.

STEEL RAILING, TYPE SM
ON APPROACH SLAB
F.A.P. 646 (IL RTE 40)
CARROLL COUNTY
STRUCTURE NO. 008-0014
SHEET 19 OF 52

DESIGNED	DFM
CHECKED	CH
DRAWN	MV
CHECKED	DFM

FILE NAME = ... \0264084-SHT-ExBr-ridge.dgn

USER NAME = SAW
PLOT SCALE = 40.0000' / in.
PLOT DATE = 8/1/2013

DESIGNED - RAC
DRAWN - SAW
CHECKED - DAZ
DATE - 08-08-13

REVISED -
REVISED -
REVISED -
REVISED -

STATE OF ILLINOIS
DEPARTMENT OF TRANSPORTATION

ZROKA
engineering

Zroka Engineering, P.C.
4216 North Hermitage
Chicago, IL 60613

EXISTING BRIDGE PLANS
FOR INFORMATION ONLY

SCALE: SHEET 28 OF 28 SHEETS STA. TO STA.

F.A.P. RTE.	SECTION	COUNTY	TOTAL SHEETS	SHEET NO.
646	5 BR-3	CARROLL	84	70
			CONTRACT NO. 64084	
ILLINOIS FED. AID PROJECT				