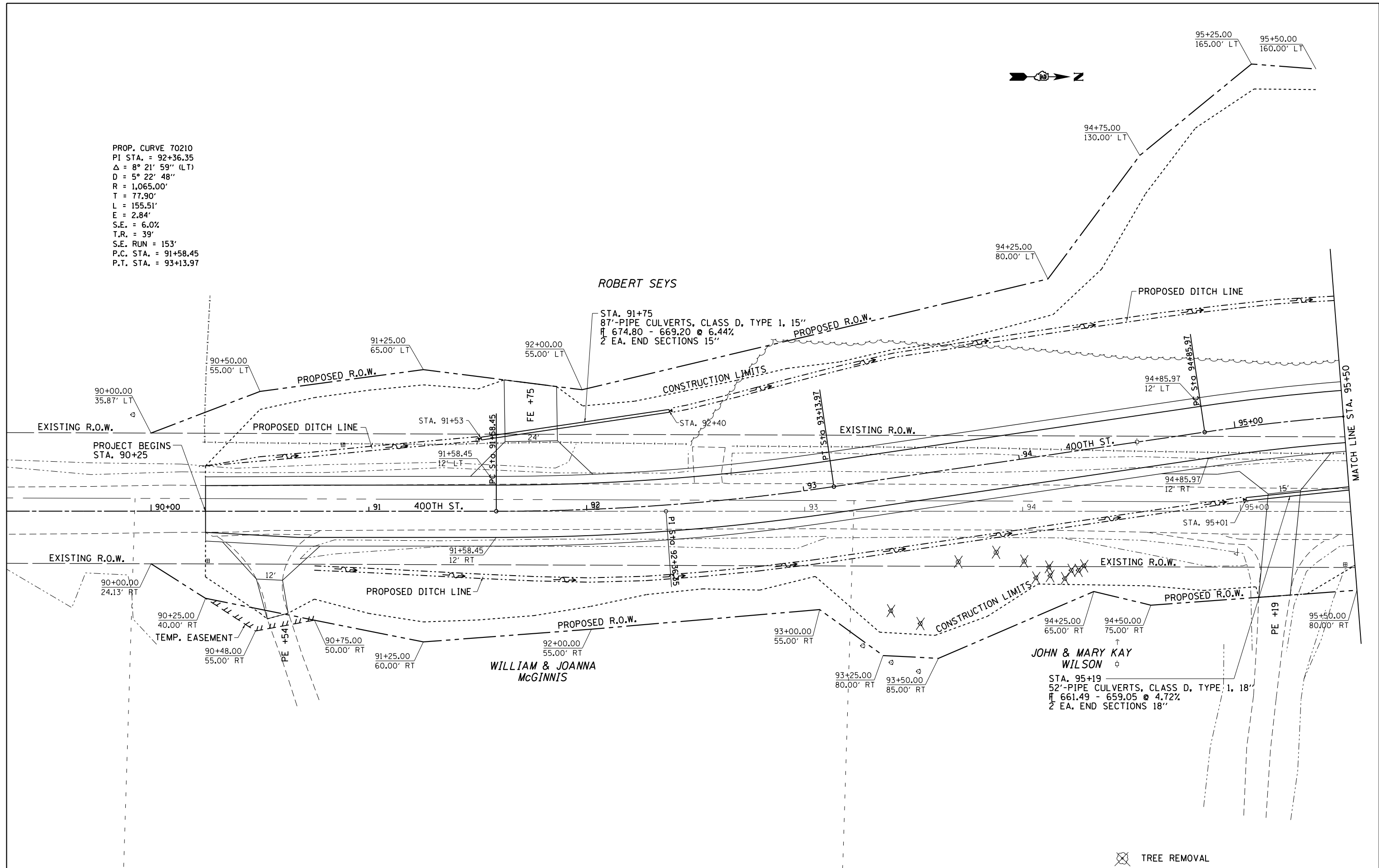


PROP. CURVE 70210
 PI STA. = 92+36.35
 $\Delta = 8^\circ 21' 59''$ (LT)
 $D = 5^\circ 22' 48''$
 $R = 1,065.00'$
 $T = 77.90'$
 $L = 155.51'$
 $E = 2.84'$
 $S.E. = 6.0\%$
 $T.R. = 39'$
 $S.E. RUN = 153'$
 $P.C. STA. = 91+58.45$
 $P.T. STA. = 93+13.97$



⊗ TREE REMOVAL

| | | | |
|--|--------------------------------------|------------|-----------|
| FILE NAME = | USER NAME = cushmenbw | DESIGNED - | REVISED - |
| et:\pwork\pwork\cushmenbw\d0333009\p201709-sh-t-pln1.dgn | | DRAWN - | REVISED - |
| Default | PLOT SCALE = 40.0000' / in. | CHECKED - | REVISED - |
| | PLOT DATE = Fri Aug 01 11:17:21 2014 | DATE - | REVISED - |

STATE OF ILLINOIS
 DEPARTMENT OF TRANSPORTATION

400TH ST.
 PLAN

SCALE: SHEET OF SHEETS STA. TO STA.

| F.A.U. RTE. | SECTION | COUNTY | TOTAL SHEETS | SHEET NO. |
|--------------------|---------|--------|---------------------------|-----------|
| * | 2R-1 | HENRY | 235 | 39 |
| CONTRACT NO. 64J43 | | | ILLINOIS FED. AID PROJECT | |

* 5789 & 5861