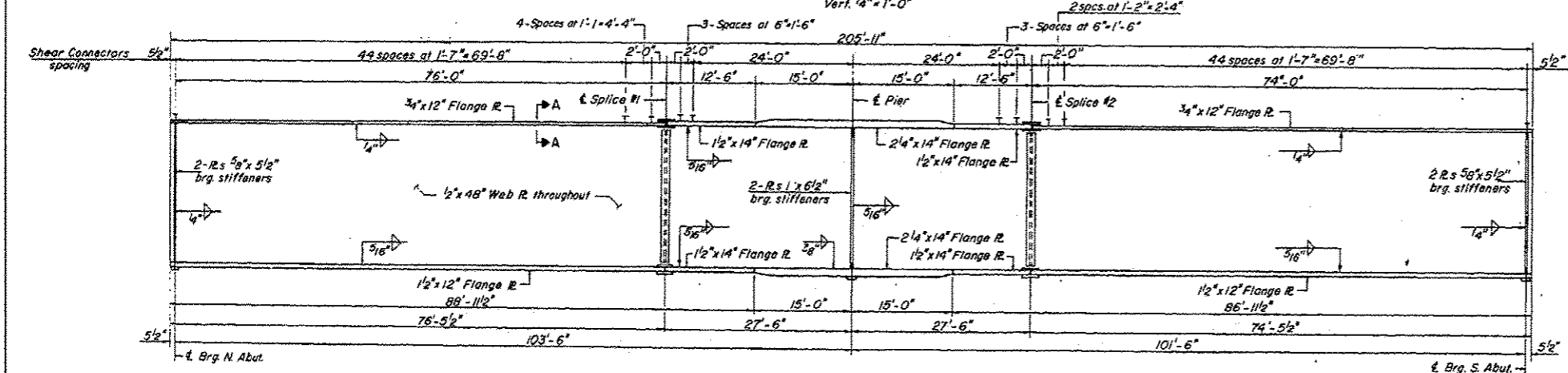


FRAMING PLAN
Scale: Horiz. 3/32" = 1'-0"
Vert. 1/4" = 1'-0"



GIRDER ELEVATION
Scale: Horiz. 3/32" = 1'-0"
Vert. 1/2" = 1'-0"

(Composite in Positive Moment Areas only)

	0.4 Span 1	Pier	0.4 Span 2
I_s (in ⁴)	199.2	44.404	199.2
I_c (in ⁴)	518.8	---	518.8
S_s (in ³)	94.8	16.91	94.8
S_c (in ³)	130.1	---	130.1
Q (ksi)	0.953	1.061	0.953
M_Q (k)	647	1455	600
S_R (ksi)	0.485	0.485	0.485
M_{sQ} (k)	397	565	374
M_{cQ} (k)	877	704	86.1
Total (k)	1274	1269	1235
S_s (ksi)	11.75	9.01	11.39
S_s Total (ksi)	19.94	19.34	18.98
VR (k)	45.1	---	45.1

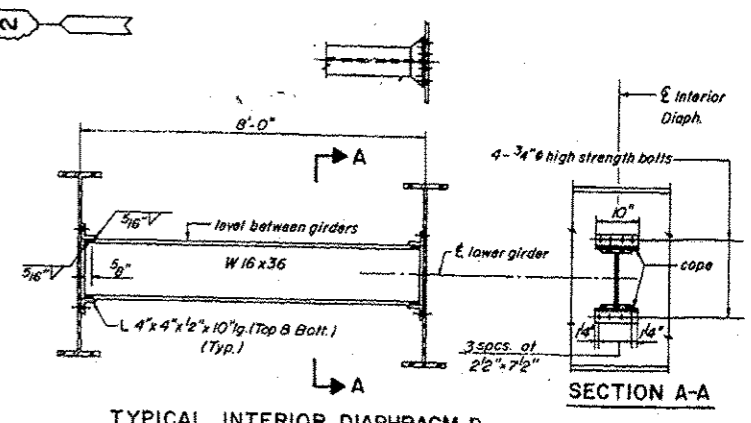
	N. Abutment	Pier	S. Abutment
R (k)	54.9	189.4	53.1
R & Imp (k)	47.0	74.1	46.9
R Total (k)	101.9	263.5	100.0

	Brig. N. Abut.	Splice 1	Brig. Pier	Splice 2	Brig. S. Abut.
Girder 1	602.17	603.09	603.09	603.09	602.27
Girder 2	602.33	603.23	603.23	603.23	602.39
Girder 3	602.35	603.23	603.23	603.23	602.37
Girder 4	602.23	603.09	603.09	603.09	602.21

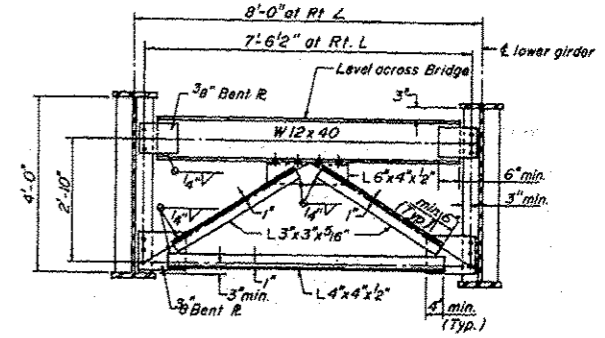
I_s and S_s are the moment of inertia and section modulus of the steel section.
 I_c and S_c are the moment of inertia and section modulus of the composite section used in computing I_s .
 VR is the maximum I_c & Impact shear range in span.

* For fabrication only

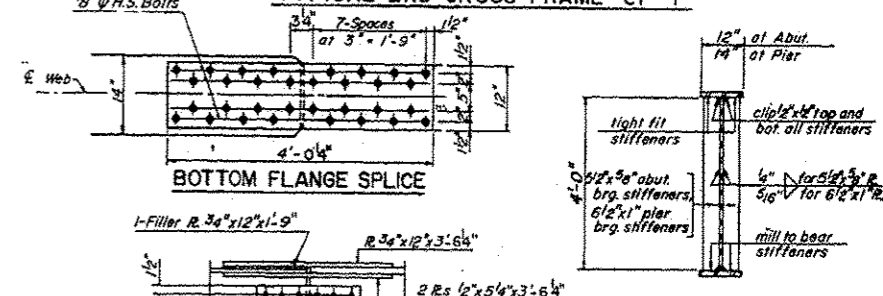
DESIGNED	P. B.
CHECKED	A. A.
DRAWN	J. P.
CHECKED	A. A.



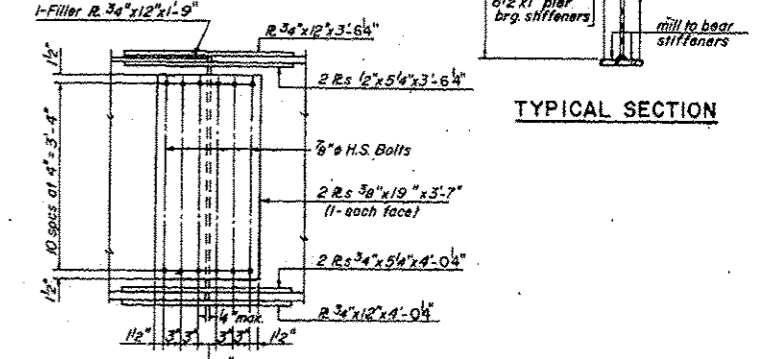
TYPICAL INTERIOR DIAPHRAGM D



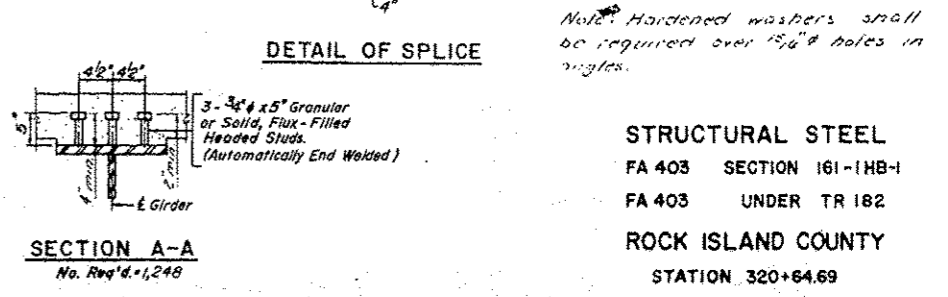
TYPICAL END CROSS FRAME CF-1



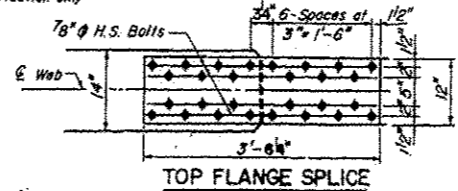
BOTTOM FLANGE SPlice



TYPICAL SECTION



DETAIL OF SPlice



TOP FLANGE SPlice

Note: Hardened washers shall be required over 1/2" holes in angles.

STRUCTURAL STEEL
 FA 403 SECTION 161-1HB-1
 FA 403 UNDER TR 182
 ROCK ISLAND COUNTY
 STATION 320+64.69

FOR INFORMATION ONLY

FILE NAME	USER NAME	DESIGNED	REVISED	STATE OF ILLINOIS DEPARTMENT OF TRANSPORTATION	EXISTING PLANS SN 081-0120	F.A.I. RTE.	SECTION	COUNTY	TOTAL SHEETS	SHEET NO.
0:\BR\Draws\Rock Island\64K16 Cleaning & Painting SH 081-0120 & 0127\CADD\02-shr.com	dossdd	-	-			88	DZ BRIDGE PAINTING 2015-	ROCK ISLAND	17	14
Default	Plot Scale = 1/8" = 1'-0"	CHECKED	REVISED			CONTRACT NO. 64K16		ILLINOIS FED. AID PROJECT		