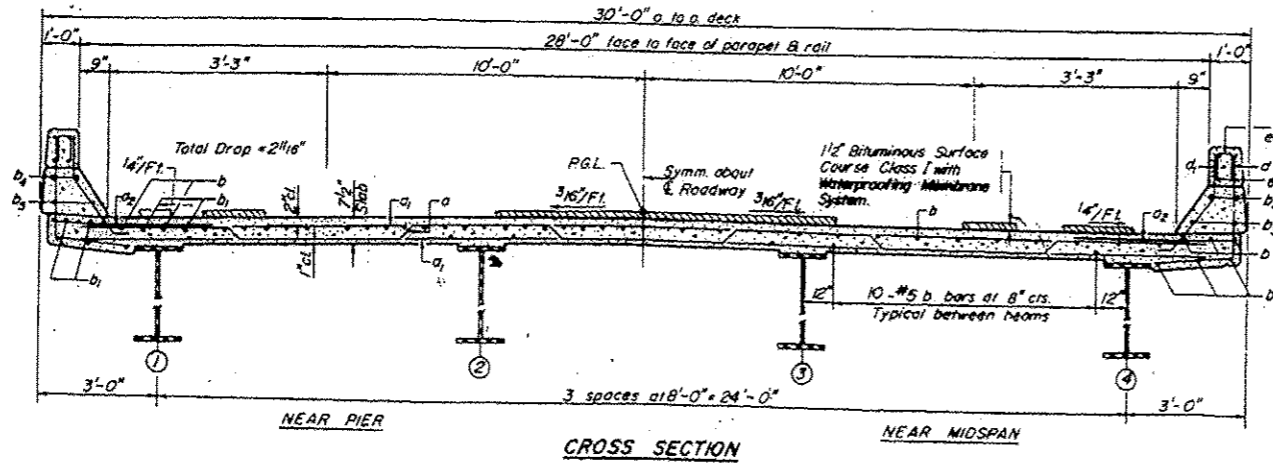
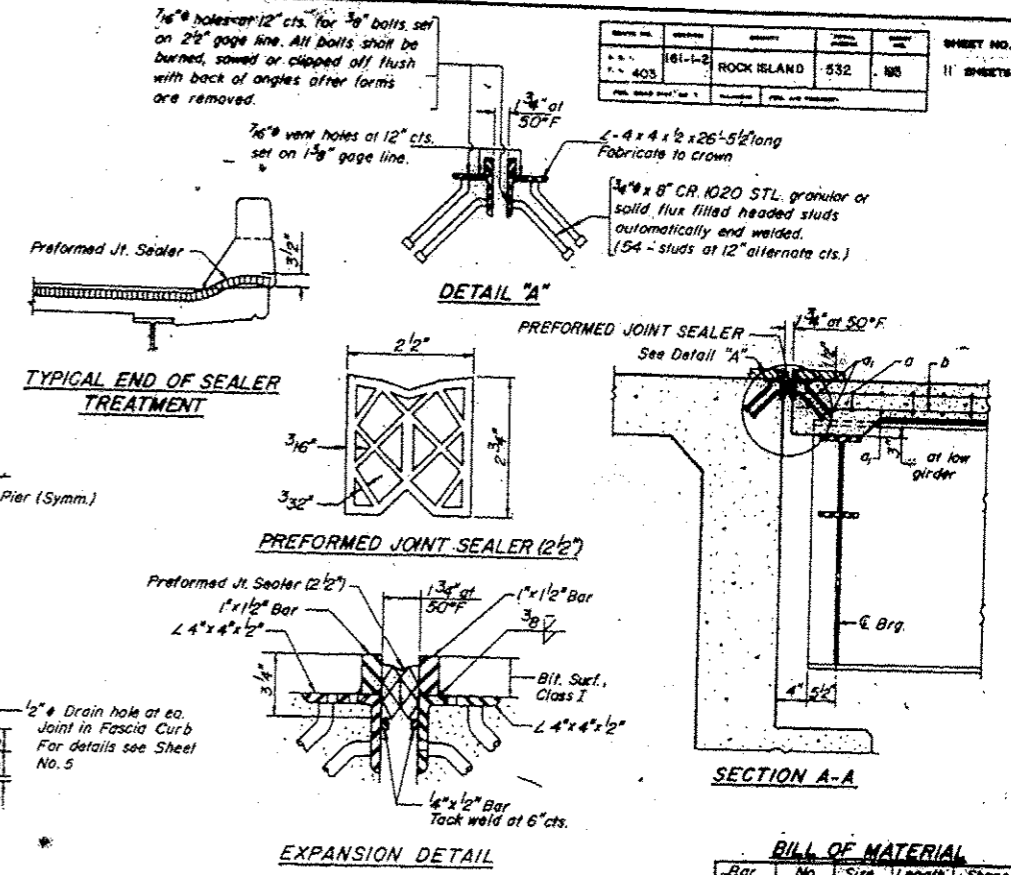
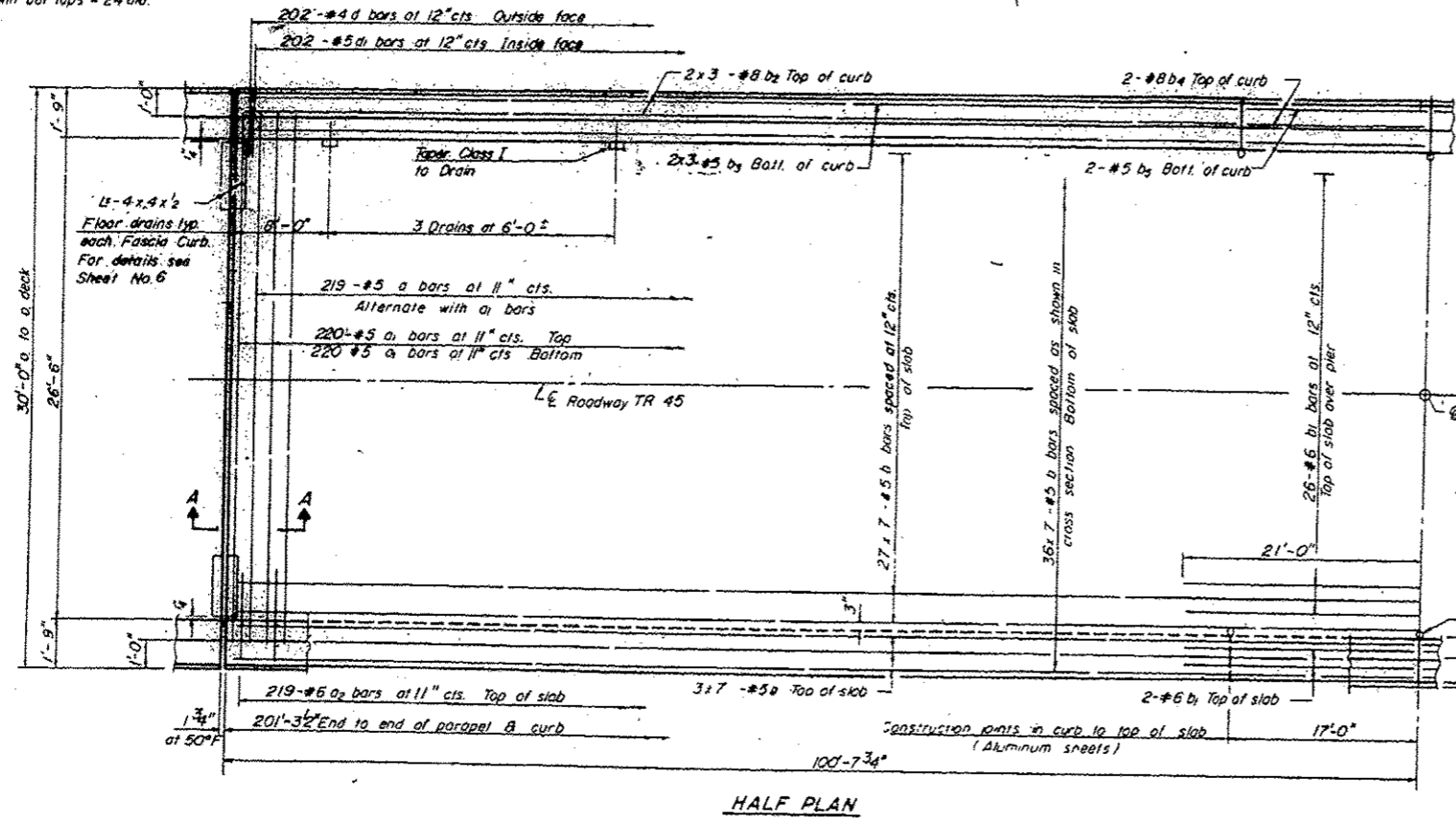
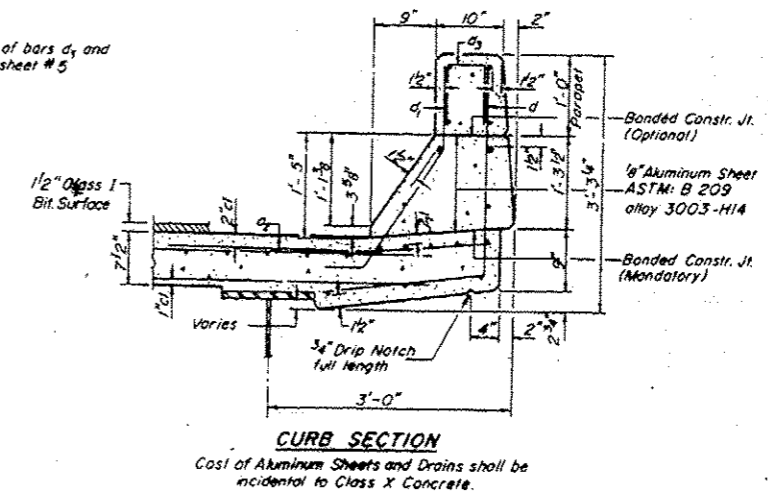


NOTE:
 Bars indicated thus 27 x 7 #5 etc
 indicates 27 lines of bars with 7
 lengths per line.
 Min bar laps = 24 dia.

PROJECT NO.	SECTION	COUNTY	TOTAL SHEETS	SHEET NO.
403	161-1-B	ROCK ISLAND	532	185



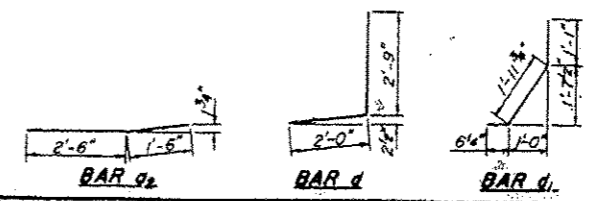
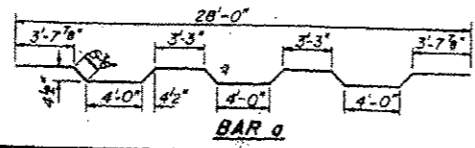
NOTES:
 For placement of bars d₁ and
 e thru e₂ see sheet # 5



BILL OF MATERIAL

Bar No.	Size	Length	Shape
a	219 #5	29'-5"	
a ₁	440 #5	28'-0"	
a ₂	438 #5	4'-0"	
b	183 #5	29'-9"	
b ₁	30 #6	42'-0"	
b ₂	24 #8	29'-3"	
b ₃	24 #5	28'-9"	
b ₄	8 #8	16'-9"	
b ₅	8 #5	16'-9"	
d	404 #4	4'-9"	
e	404 #5	3'-7"	
Preformed Jt. Sealer	Lin. Ft.	60	
Reinforcement Bars	Lbs.	44,960	
Class X Concrete	Cu. Yds.	175.5	
Structural Steel	Lbs.	84,900	
Protective Coat	Sq. Yd.	157	
Bituminous Concrete Surface Course Class I	Ton	50	
Waterproofing Membrane System	Sq. Yd.	593	

DESIGNED	H.R.S.
CHECKED	P.B.
DRAWN	I.P.
CHECKED	P.B.



DECK DETAILS
 FA 403 - SECTION 161-1 H B-D
 FA 403 UNDER TR 45
 ROCK ISLAND COUNTY
 STATION 668+50.00

FOR INFORMATION ONLY