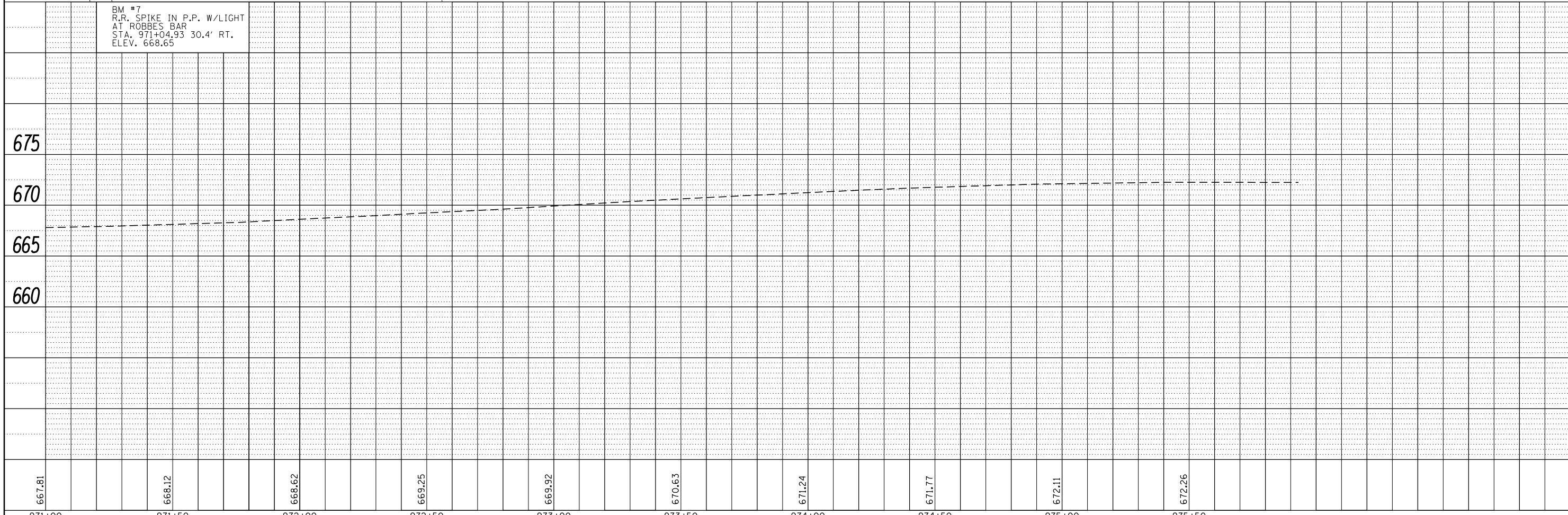
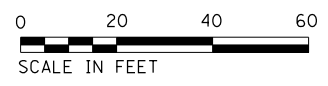
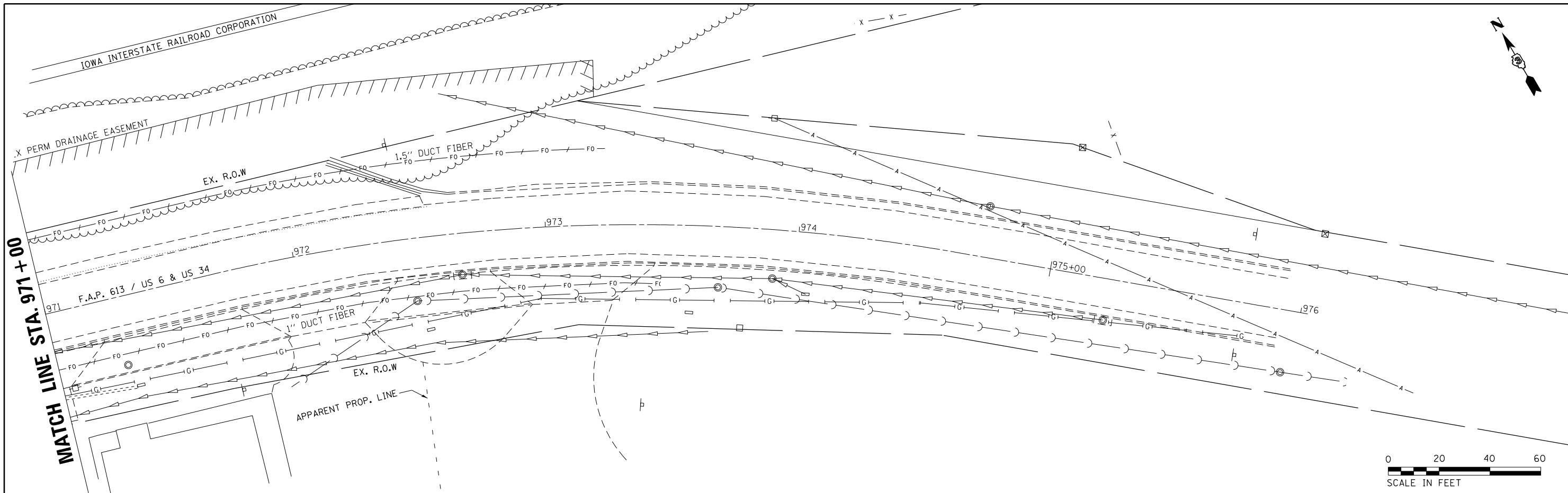


PLAN	SURVEYED	DATE
	PLOTTED	BY
	ALIGNED	CHECKED
	FILED	FILED
	NO.	NO.
	NO.	NO.

PROFILE	SURVEYED	DATE
	PLOTTED	BY
	GRADES	CHECKED
	STRUCTURE	NOTATIS
	NO.	NO.
	NO.	NO.



BM #7
R.R. SPIKE IN P.P. W/LIGHT
AT ROBBES BAR
STA. 971+04.93 30.4' RT.
ELEV. 668.65

667.81	668.12	668.62	669.25	669.92	670.63	671.24	671.77	672.11	672.26
971+00	971+50	972+00	972+50	973+00	973+50	974+00	974+50	975+00	975+50

FILE NAME =	USER NAME = carpenterdj	DESIGNED -	REVISED -
c:\pwork\pwork\carpenterdj\d0183264\0366A17-shr-plnpr.f.dgn		DRAWN -	REVISED -
		CHECKED -	REVISED -
		DATE -	REVISED -

STATE OF ILLINOIS
DEPARTMENT OF TRANSPORTATION

US 6 / US 34, SN 006-0140
PLAN & PROFILE

F.A.P. RTE.	SECTION	COUNTY	TOTAL SHEETS	SHEET NO.
613	(8D-BR)BR	BUREAU	63	19
CONTRACT NO. 66A17				

SCALE: SHEET NO. OF SHEETS STA. TO STA.

ILLINOIS FED. AID PROJECT