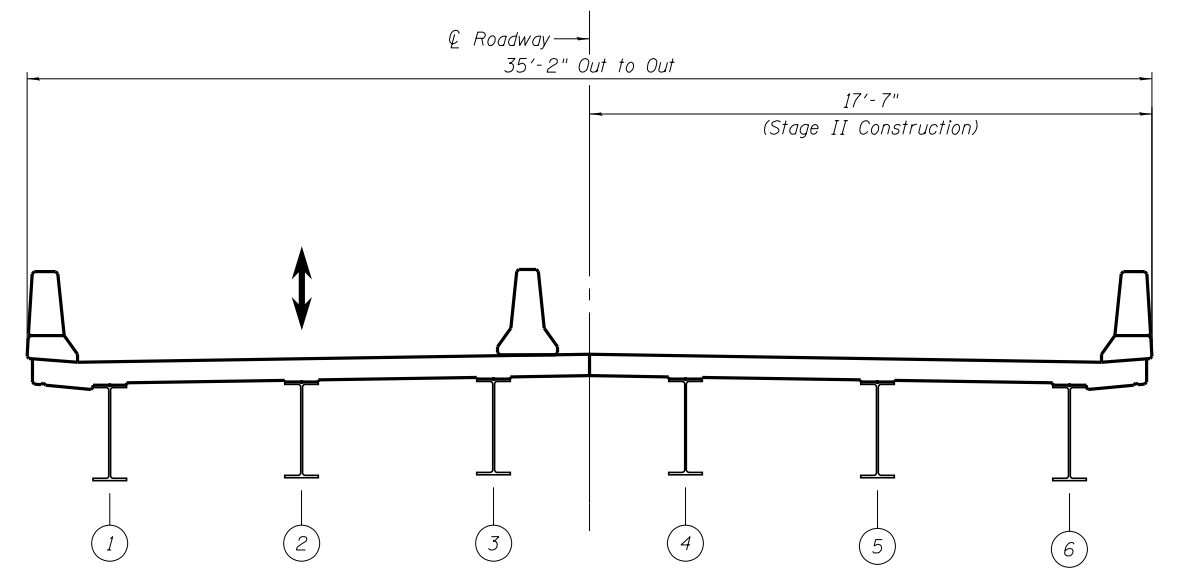
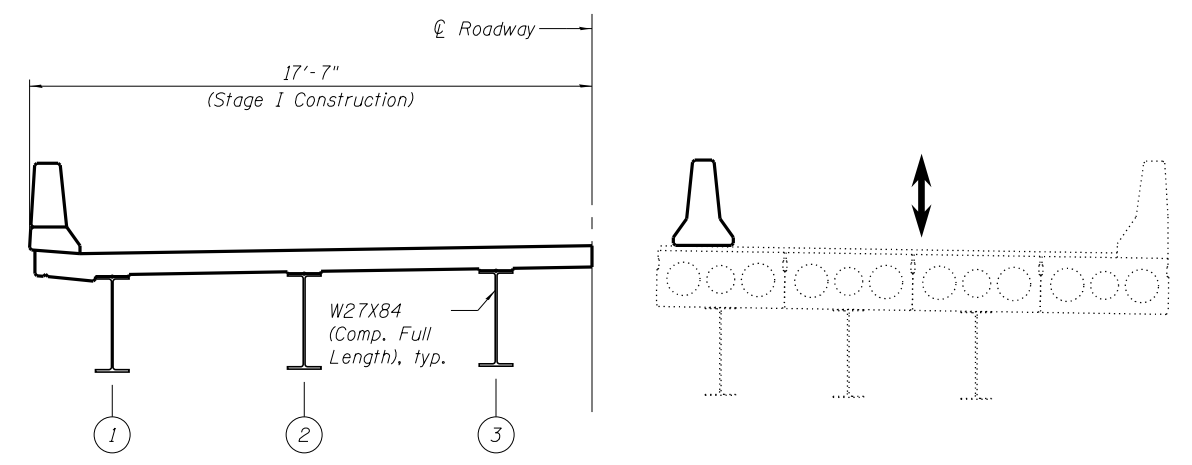


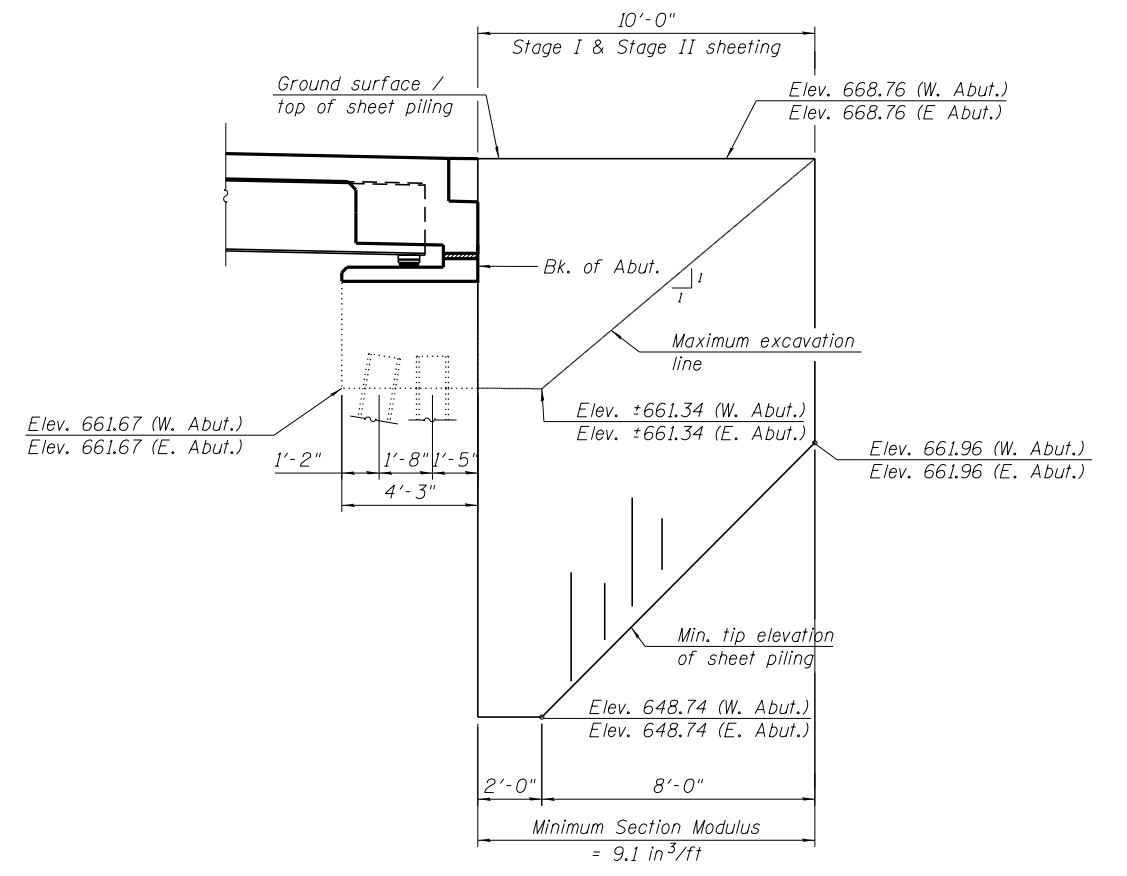
STAGE I REMOVAL



STAGE II CONSTRUCTION

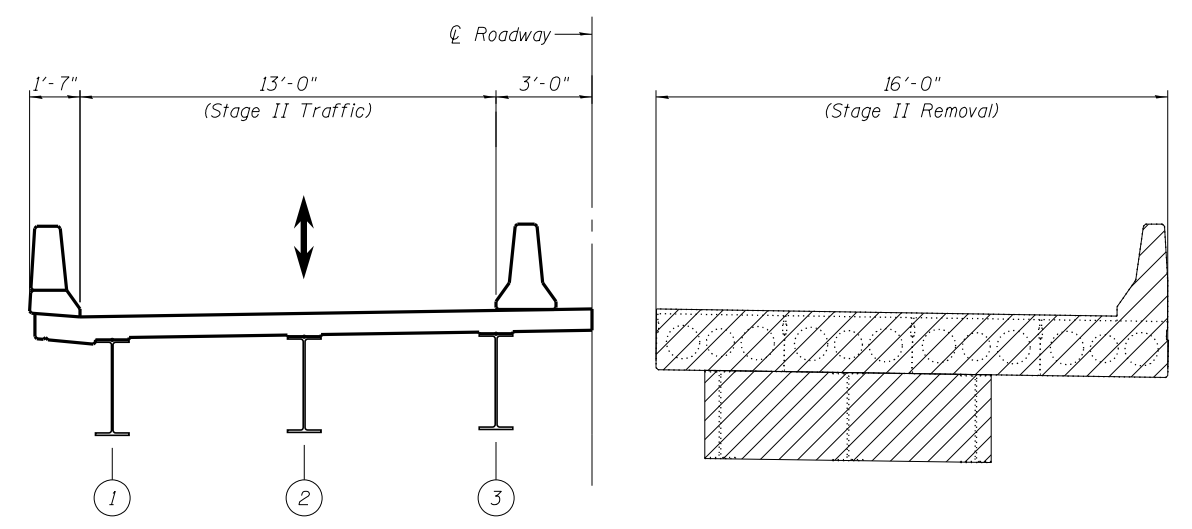


STAGE I CONSTRUCTION



TEMPORARY SHEET PILING

If the Contractor chooses to alter the temporary cantilevered sheet piling design requirements shown on the plans, a design submittal including plan details and calculations will be required for review and acceptance by the Engineer.



STAGE II REMOVAL

Notes:
For quantity of Temporary Concrete Barrier, See roadway plans.
Current load posting of 10 tons axle and 40 tons gross to remain in effect with visible sign during construction.
All staging cross sections are looking East.

LEGEND

- Removal of Existing Superstructures

FILE NAME: c:\pwworkspace\carpenter\d\08660149_66A17-2003-StageConst.dgn



USER NAME = carpenterdj	DESIGNED - BCM	REVISED
	CHECKED - BCM	REVISED
PLOT SCALE = N/A	DRAWN - KO	REVISED
PLOT DATE = 8/1/2014	CHECKED - 7/26/2012	REVISED

**STATE OF ILLINOIS
DEPARTMENT OF TRANSPORTATION**

**STAGE CONSTRUCTION DETAILS
STRUCTURE NO. 006-0140**
SHEET NO. S3 OF S26 SHEETS

F.A.P. RTE.	SECTION	COUNTY	TOTAL SHEETS	SHEET NO.
613	(8D-BR) BR	BUREAU	63	25
CONTRACT NO. 66A17				
ILLINOIS FED. AID PROJECT				