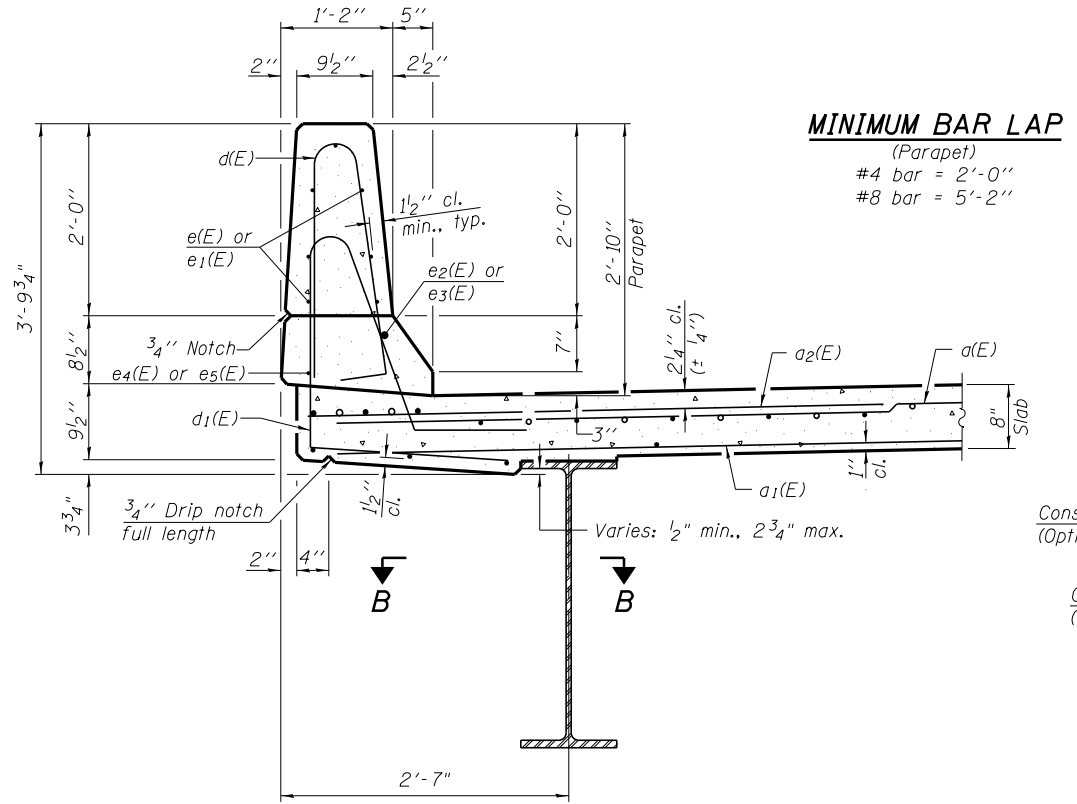
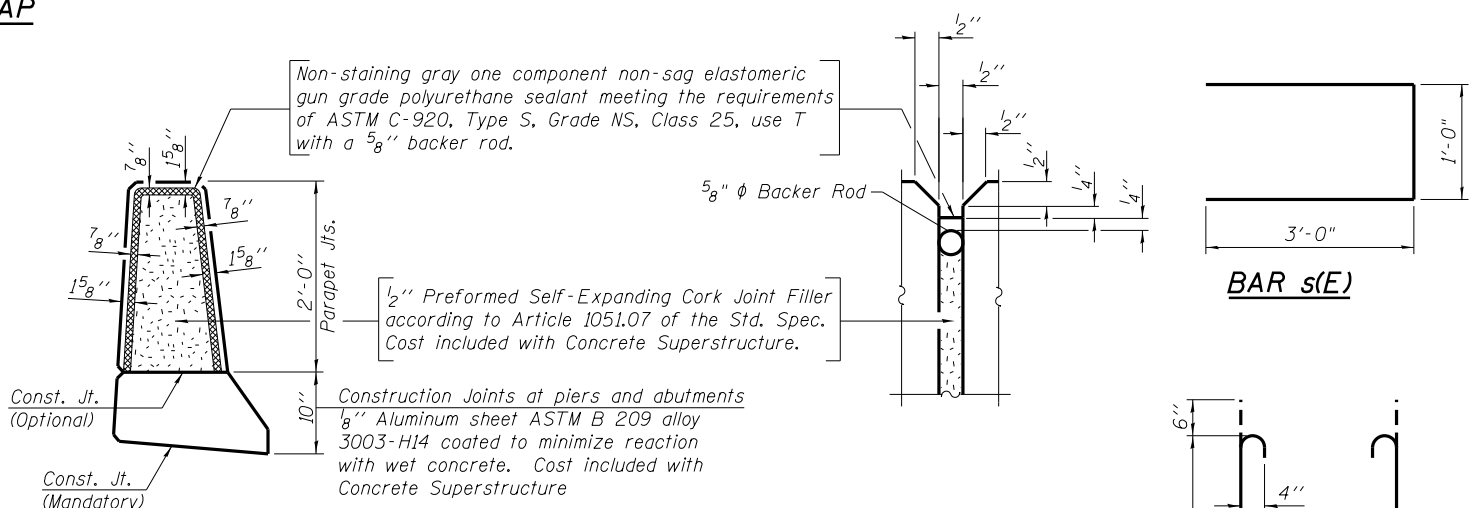


INSIDE ELEVATION OF PARAPET



SECTION THRU PARAPET



PARAPET JOINT DETAILS

SUPERSTRUCTURE BILL OF MATERIAL

Bar	No.	Size	Length	Shape
a(E)	440	#5	17'-1"	—
a ₁ (E)	308	#5	16'-8"	—
a ₂ (E)	440	#6	6'-6"	—
a ₃ (E)	8	#5	20'-5"	—
b(E)	190	#5	27'-8"	—
b ₁ (E)	70	#6	27'-0"	—
b ₂ (E)	216	#5	23'-6"	—
d(E)	280	#5	5'-7"	⌋
d ₁ (E)	280	#5	7'-4"	⌋
e(E)	84	#4	14'-1"	—
e ₁ (E)	42	#4	13'-8"	—
e ₂ (E)	8	#8	24'-1"	—
e ₃ (E)	4	#8	23'-6"	—
e ₄ (E)	8	#4	22'-6"	—
e ₅ (E)	4	#4	21'-11"	—
m(E)	32	#6	20'-5"	—
m ₁ (E)	24	#6	9'-1"	—
m ₂ (E)	16	#6	6'-9"	—
m ₃ (E)	8	#6	2'-6"	—
s(E)	72	#5	7'-0"	⌋
s ₁ (E)	62	#4	8'-5"	⌋
u(E)	84	#5	2'-9"	⌋
v(E)	70	#5	3'-9"	⌋
Reinforcement Bars, Epoxy Coated		Pound		40,060
Concrete Superstructure		Cu. Yds.		167.3

Bars indicated thus 1 x 2-#5 etc. indicates 1 line of bars with 2 lengths per line.

FILE NAME = ... \sup-struct\11-sup-struct\11.dgn
PROJECT NO. 00952-2

Coombe-Bloxdorf P.C.
- CIVIL ENGINEERS -
- STRUCTURAL ENGINEERS -
- LAND SURVEYORS -
Design Firm License No. 184-002703

USER NAME = carpenterd_j	DESIGNED - AMC	REVISED -
PLOT SCALE = 0:2.0000 '1' / in.	CHECKED - GJB	REVISED -
PLOT DATE = 8/1/2014	DRAWN - CFC	REVISED -
	CHECKED - MCB	REVISED -

STATE OF ILLINOIS
DEPARTMENT OF TRANSPORTATION

SUPERSTRUCTURE DETAILS
STRUCTURE NO. 006-0140

SHEET NO. S11 OF S26 SHEETS

F.A.P. RT.E.	SECTION	COUNTY	TOTAL SHEETS	SHEET NO.
613	(8D-BR) BR	BUREAU	63	33
CONTRACT NO. 66A17				

ILLINOIS FED. AID PROJECT