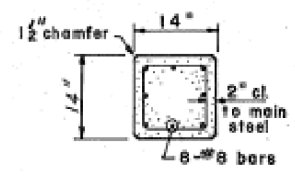


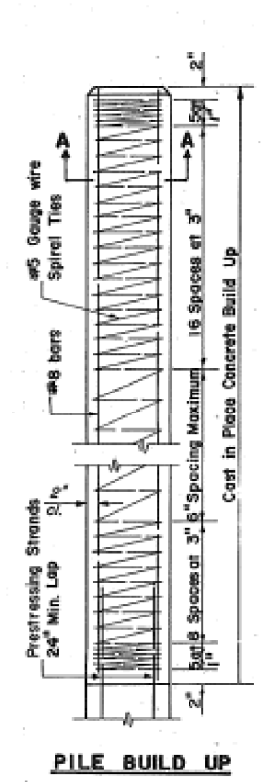
**SECTION A-A
FOR PILES UNDER
45' LONG**



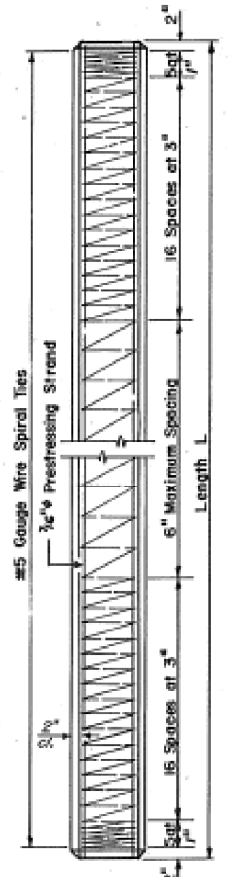
**SECTION A-A
FOR PILES 45'
OR MORE**

HANDLING: For Pile lengths up to 45' use two slings placed at a distance of 0.21 L from each end. For Piles longer than 45' use three slings placed at a distance of 0.12 L from each end and at mid point of pile.

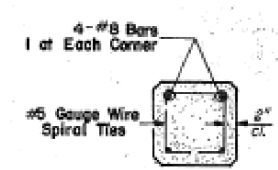
**DETAIL OF PRECAST
CONCRETE PILES**



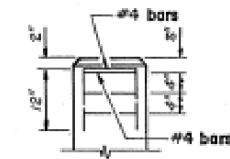
PILE BUILD UP



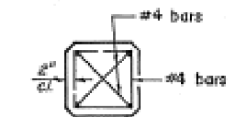
PILE PLAN



SECTION A-A

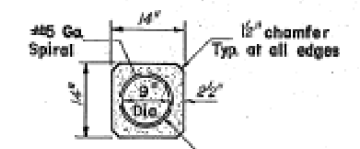


**ELEVATION
(End Reinforcement)**



**PLAN
(End Reinforcement)**

NO. IN SET	NO.	PROJECT	TOTAL SHEETS	SHEET NO.
1	8D BR	BUREAU	9	9



**SECTION
THRU PILE**

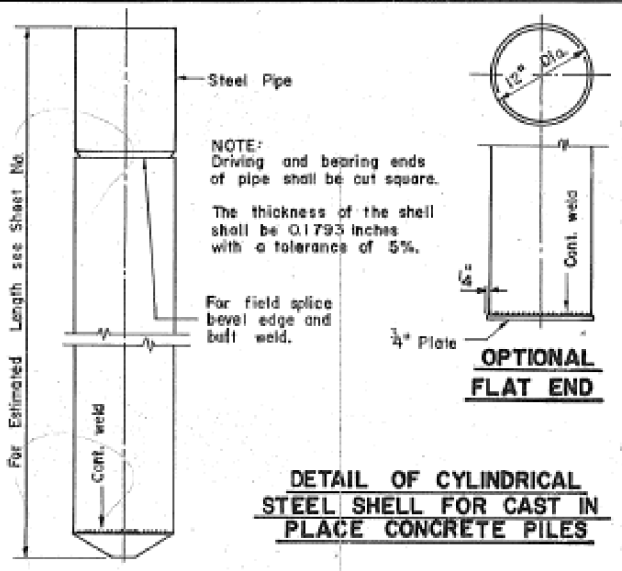
DESIGN STRESSES

- $f_c' = 5,000 \text{ psi}$
- $f_c' = 4,000 \text{ psi}$
- $f_s' = 270,000 \text{ psi (31,000 lbs.)}$
- $f_s' = 189,000 \text{ psi (21,700 lbs. } 1/2 \text{ or } 29,900 \text{ lbs. } 3/4 \text{)}$

NOTES

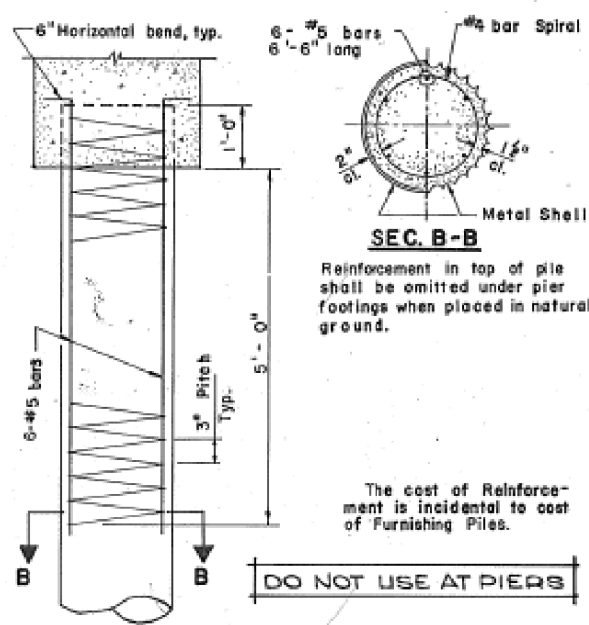
Prestressing steel shall be non-galvanized extra high strength stress-relieved 7-wire strand. The nominal diameter shall be 7/16 inch and the minimum nominal cross-sectional area shall be 0.115 sq. in. or the equivalent 6 #7/16 strands with a cross-sectional area of 0.153 sq. in. may be used. For Pile lengths up to 65', use two slings placed at a distance of 0.21 L from each end. For Piles longer than 65' use three slings placed at a distance of 0.12 L from each end or a mid-point of pile. L = Over all length of pile to be handled.

PRECAST PRESTRESSED CONCRETE PILE



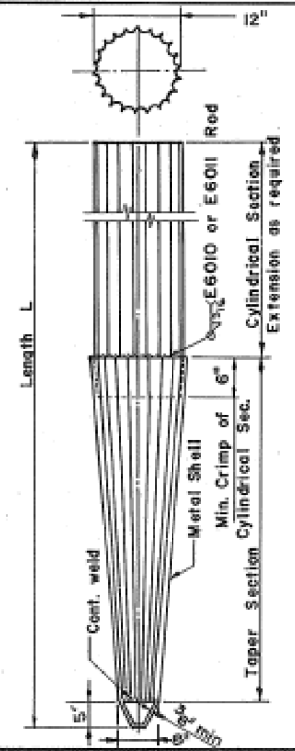
**DETAIL OF CYLINDRICAL
STEEL SHELL FOR CAST IN
PLACE CONCRETE PILES**

DO NOT USE AT PIERS



**DETAIL OF REINFORCEMENT
FOR METAL SHELLS**

DO NOT USE AT PIERS

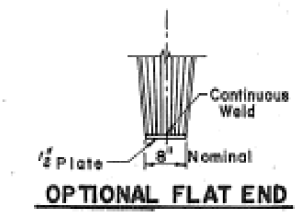


**DETAIL OF TAPERED METAL SHELLS
FOR CAST IN PLACE CONCRETE PILES**

NOTE: The thickness of the shell shall be 0.1495 inches with a tolerance of 5%. The shell shall be in accordance with Article 710.05 (a) of the standard Specifications except that min. yield strength for the steel after cold working shall be 50,000 p.s.i.

FIELD CRIMP DETAIL

NOTE: 6" Crimp shall either be supplied on the cylindrical section or made in the field as detailed.



OPTIONAL FLAT END

DO NOT USE AT PIERS

ALLOWABLE TAPERS

- 10' Length - Taper 1" in 2'-6"
- 17' Length - Taper 1" in 4'-0"
- 25' Length - Taper 1" in 7'-0"
- 30' Length - Taper 1" in 7'-0"

**PILE DETAILS
SECTION 8D - BR
U S RT. 6 FAS RT. 2246
BUREAU COUNTY**

FILE NAME =	USER NAME = carpenterdj	DESIGNED -	REVISOR -
ci:\pw\work\p\midot\carpenterdj\d0183264\0366A17-sht-exbrIDGE.dgn		DRAWN -	REVISOR -
		CHECKED -	REVISOR -
		DATE -	REVISOR -

**STATE OF ILLINOIS
DEPARTMENT OF TRANSPORTATION**

**EXISTING BRIDGE PLANS
FOR INFORMATION ONLY**

SCALE: _____ SHEET _____ OF _____ SHEETS STA. _____ TO STA. _____

F.A.P. RTE.	SECTION	COUNTY	TOTAL SHEETS	SHEET NO.
613	(8D BR)BR	BUREAU	63	54
			CONTRACT NO. 66A17	