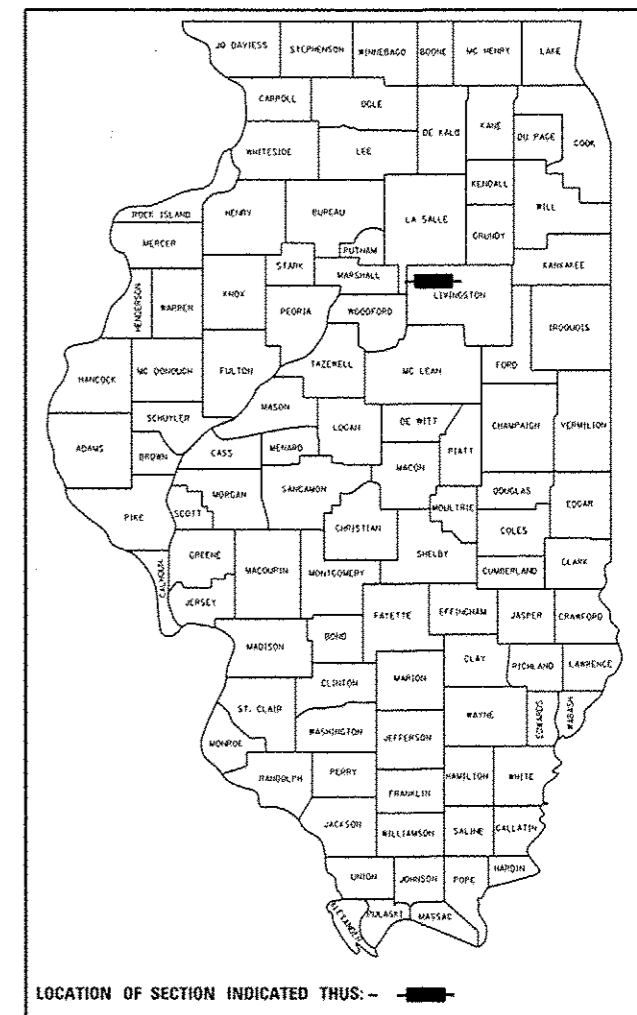


F.A.S. RTE.	SECTION	COUNTY	TOTAL SHEETS	SHEET NO.
370	(102 BR) BR	LIVINGSTON	65	1
		ILLINOIS	CONTRACT NO. 66A18	

STATE OF ILLINOIS
DEPARTMENT OF TRANSPORTATION
DIVISION OF HIGHWAYS
**PROPOSED
HIGHWAY PLANS**

P-93-014-08
D-93-024-14



LOCATION OF SECTION INDICATED THUS: —

FUNCTIONAL CLASSIFICATION
RURAL MAJOR COLLECTOR
2011 ADT = 460
PV = 93% SU = 7% MU = 0%

STATE OF ILLINOIS
DEPARTMENT OF TRANSPORTATION
DIVISION OF HIGHWAYS

SUBMITTED August 15 2014
Paul Loete o.b.
DEPUTY DIRECTOR OF HIGHWAYS, REGION ENGINEER

Oct 17 2014
John D. Baranzelli P.E. *JB*
actg. ENGINEER OF DESIGN AND ENVIRONMENT

Oct 17 2014
Omer Osman P.E. *OO*
DIRECTOR OF HIGHWAYS, CHIEF ENGINEER

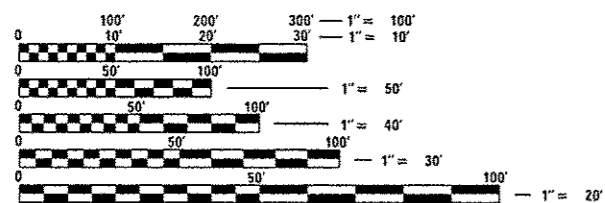
**PRINTED BY THE AUTHORITY
OF THE STATE OF ILLINOIS**

INDEX OF SHEETS

- 1 COVER SHEET
- 2 GENERAL NOTES
- 3-7 SUMMARY
- 8-9 TYPICAL SECTIONS
- 10-11 SCHEDULES
- 12 TIE POINTS
- 13-15 PLAN AND PROFILES SHEETS
- 16-19 STAGES OF CONSTRUCTION
- 20 EROSION CONTROL & PAVEMENT MARKING
- 21 ROW PLAN
- 22-39 STRUCTURE DETAILS
- 40-53 EXISTING STRUCTURE PLANS
- 54-55 DETAILS
- 56-65 CROSS-SECTIONS

HIGHWAY STANDARDS

- 000001-06 STANDARD SYMBOLS, ABBREVIATIONS AND PATTERNS
- 001001-02 AREAS OF REINFORCEMENT BARS
- 001006 DECIMAL OF AN INCH AND OF A FOOT
- 280001-07 TEMPORARY EROSION CONTROL SYSTEMS
- 408201-01 MAILBOX TURNOUT
- 420401-10 BRIDGE APPROACH PAVEMENT CONNECTOR
- 482011-03 HMA SHOULDER STRIPS/SHOULDERS WITH RS OR WIDENING & RS PROJECTS
- 515001-03 NAME PLATE FOR BRIDGES
- 630001-10 STEEL PLATE BEAM GUARDRAIL
- 630201-08 PCC/HMA STABILIZATION AT STEEL PLATE BEAM GUARDRAIL
- 630301-06 SHOULDER WIDENING FOR TYPE 1(SPECIAL) GUARDRAIL TERMINALS
- 631032-08 TRAFFIC BARRIER TERMINAL, TYPE 6A
- 635006-03 REFLECTOR AND TERMINAL MARKER PLACEMENT
- 635011-02 REFLECTOR MARKER AND MOUNTING DETAILS
- 688001-01 RIGHT-OF-WAY MARKERS
- 701001-02 OFF-ROAD OPERATIONS 2L, 2W, MORE THAN 15' (4.5 m) AWAY
- 701006-05 OFF-ROAD OPERATIONS 2L, 2W, 15' (4.5 m) TO 24' (600 mm) FROM PAVEMENT EDGE
- 701011-04 OFF-ROAD MOVING OPERATIONS 2L, 2W, DAY ONLY
- 701201-04 LANE CLOSURE, 2L, 2W, DAY ONLY, FOR SPEEDS ≥ 45 MPH
- 701301-04 LANE CLOSURE, 2L, 2W, SHORT TIME OPERATIONS
- 701306-03 LANE CLOSURE, 2L, 2W, SLOW MOVING OPERATIONS DAY ONLY, FOR SPEEDS ≥ 45 MPH
- 701311-03 LANE CLOSURE, 2L, 2W, MOVING OPERATIONS - DAY ONLY
- 701321-13 LANE CLOSURE, 2L, 2W, BRIDGE REPAIR WITH BARRIER
- 701901-03 TRAFFIC CONTROL DEVICES
- 704001-07 TEMPORARY CONCRETE BARRIER
- 781001-03 TYPICAL APPLICATIONS RAISED REFLECTIVE PAVEMENT MARKERS



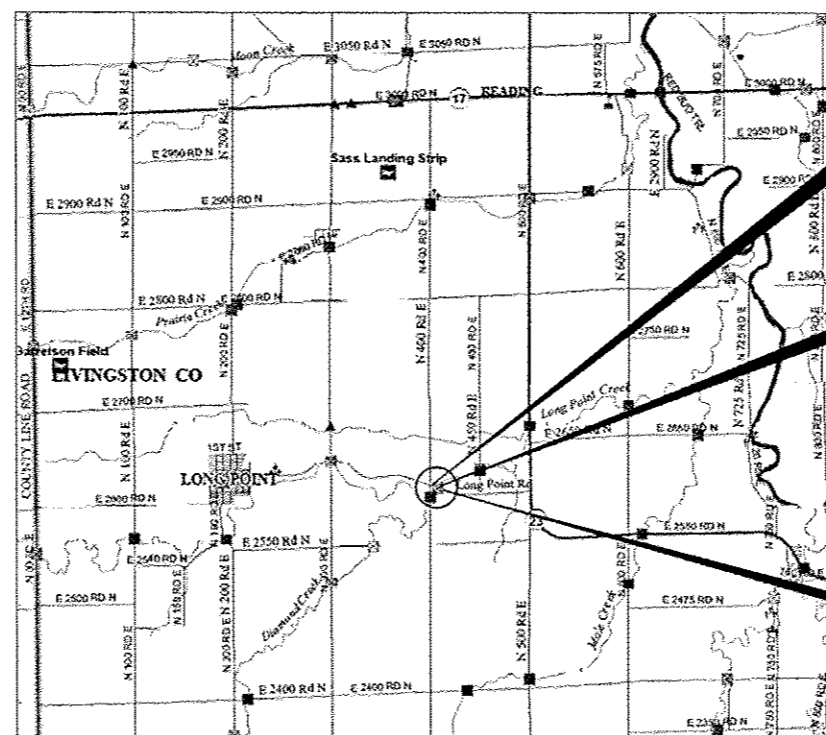
FULL SIZE PLANS HAVE BEEN PREPARED USING STANDARD ENGINEERING SCALES. REDUCED SIZED PLANS WILL NOT CONFORM TO STANDARD SCALES. IN MAKING MEASUREMENTS ON REDUCED PLANS, THE ABOVE SCALES MAY BE USED.

J.U.I.E.
JOINT UTILITY LOCATION INFORMATION FOR EXCAVATION
1-800-892-0123
OR 811

DISTRICT 3 (815) 434-6131
PROJECT ENGINEER: JOE KANNEL, P.E.
UNIT CHIEF: DUANE LUKKARI, P.E.
TOWNSHIP: LONG POINT
CONTRACT NO. 66A18

FAS ROUTE 370 (LONG POINT ROAD)
SECTION (102 BR) BR
PROJECT: ACRS-0370(102)
SUPERSTRUCTURE REPLACEMENT
LIVINGSTON COUNTY

C-93-031-14



IMPROVEMENT ENDS
STA. 51 + 47

S.N. 053-0157 STA. 48 + 96.77
BRIDGE SUPERSTRUCTURE
REPLACEMENT OVER
LONG POINT CREEK.

THE EXIST. 3 SPAN BRIDGE
WAS CONSTRUCTED IN 1988 WITH
PPC DECK BEAMS ON PILE BENT
OPEN ABUTMENTS AND SOLID
SHAFT PILE BENT PIERS.

IMPROVEMENT BEGINS
STA. 45 + 00

GROSS LENGTH = 647 FT. = 0.12 MILE
NET LENGTH = 647 FT. = 0.12 MILE