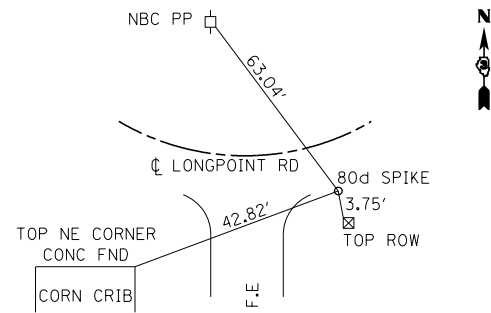
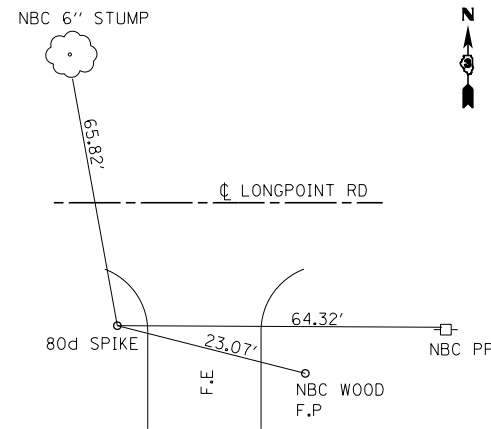


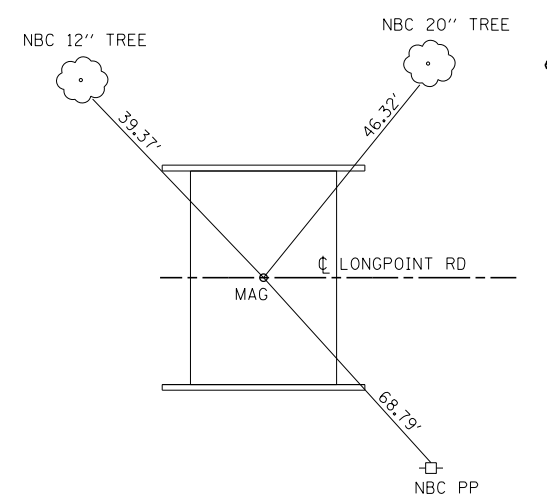
STA. 40+20.07, 30.65'LT



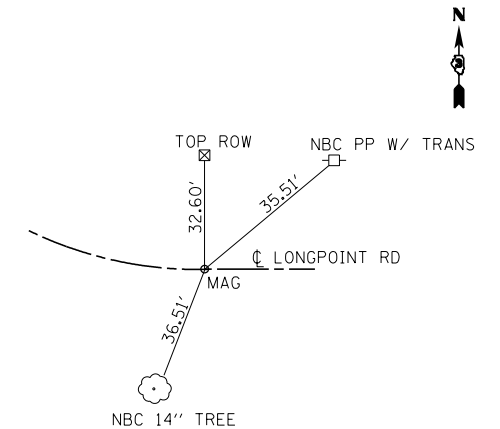
STA. 13+75.18, 30.49'LT



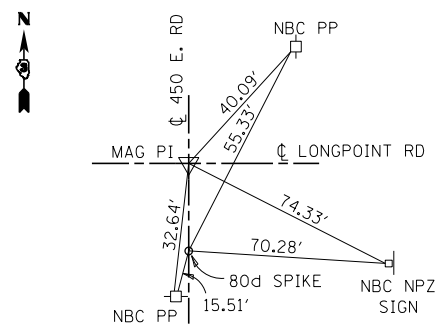
POT ☐ BOX CULVERT
STA. 5+24.99



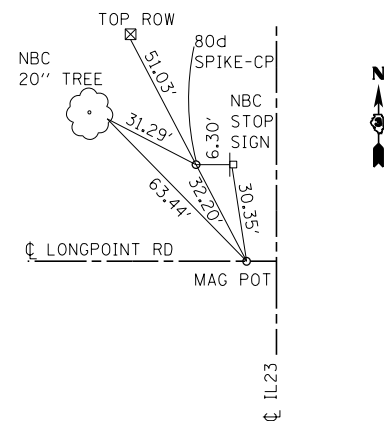
PC STA. 34+00.94



CP 31503 26+85.99 17.55'LT
PI 26+86.33 LONGPOINT RD=
90+00 E. 450TH RD



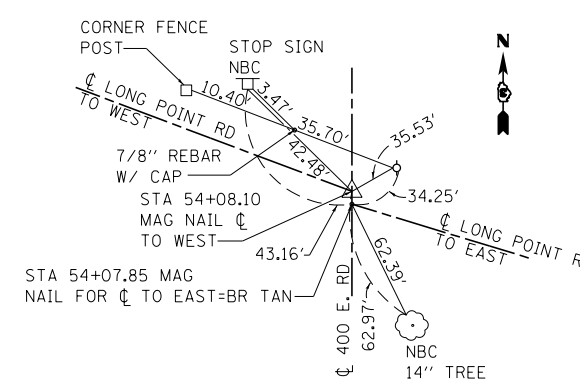
CP 31505 0+23.70 21.75'RT
POT 0+00.00 LONGPOINT RD



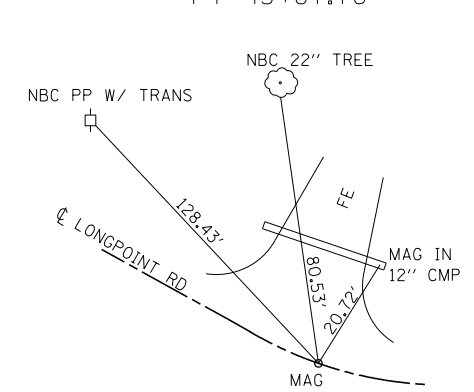
POINT # 550 TRAVERSE STATION
STA 54+32.64, 30.99' RT

PI STA 54+07.85 = BR. TAN TO EAST

PI STA 54+08.10 2610 N RD =
100+00.00 400 E RD



PT 43+87.76



FILE NAME =	USER NAME = Schwankerg	DESIGNED -	REVISED -
et:\pw\work\p1dot\schwankerg\d0179226\066A18-sht-ATB.dgn		DRAWN -	REVISED -
	PLOT SCALE = 100.0000' / in.	CHECKED -	REVISED -
	PLOT DATE = 8/13/2014	DATE -	REVISED -

STATE OF ILLINOIS
DEPARTMENT OF TRANSPORTATION

TIE POINTS	
SCALE:	SHEET 1 OF 1 SHEETS STA. TO STA.

F.A.S. RTE.	SECTION	COUNTY	TOTAL SHEETS	SHEET NO.
370	(102 BR) BR	LIVINGSTON	65	12
CONTRACT NO. 66A18			ILLINOIS FED. AID PROJECT	