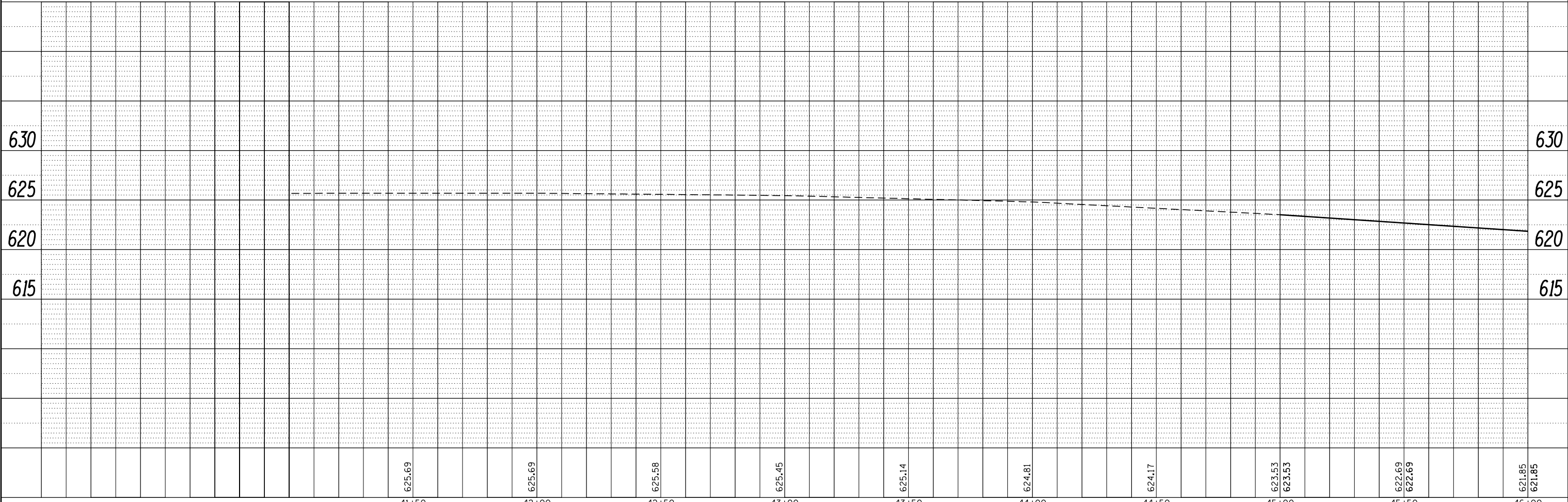
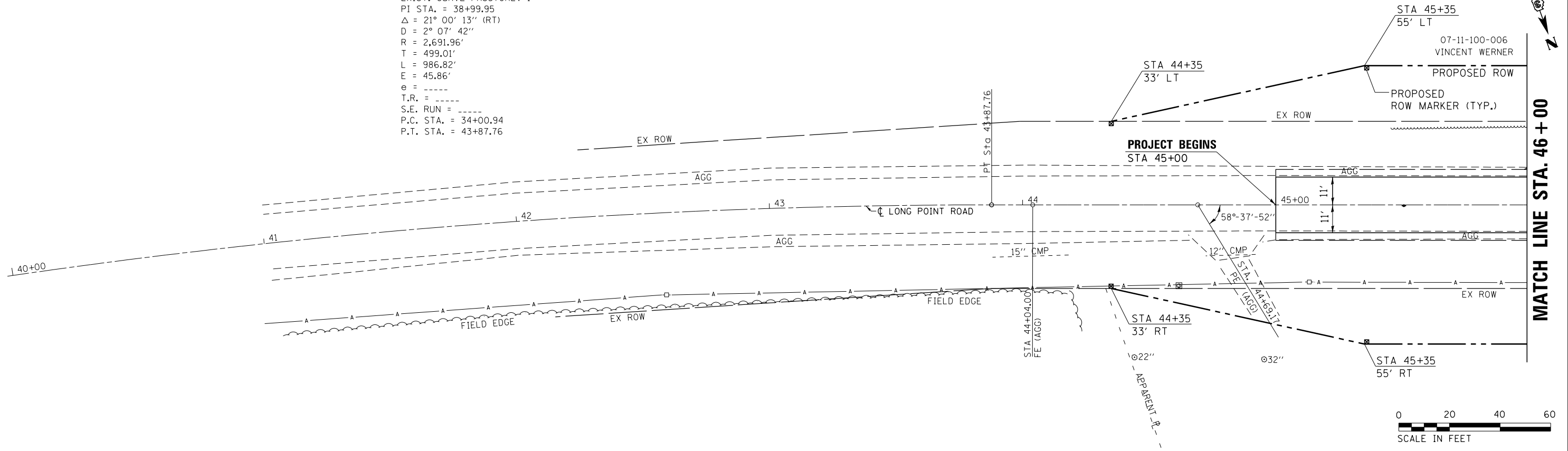


PLAN	SURVEYED	BY	DATE
	PLOTTED		
	NOTE BOOK		
	NO.		

PROFILE	SURVEYED	BY	DATE
	PLOTTED		
	GRADES CHECKED		
	STRUCTURE NOTATIONS CHECKED		
	NO.		

EXIST. CURVE FAS370REV-1
 PI STA. = 38+99.95
 $\Delta = 21^\circ 00' 13''$ (RT)
 $D = 2^\circ 07' 42''$
 $R = 2,691.96'$
 $T = 499.01'$
 $L = 986.82'$
 $E = 45.86'$
 $e =$ -----
 $T.R. =$ -----
 $S.E. RUN =$ -----
 $P.C. STA. = 34+00.94$
 $P.T. STA. = 43+87.76$



FILE NAME =	USER NAME = Schwankerg	DESIGNED -	REVISED -	STATE OF ILLINOIS DEPARTMENT OF TRANSPORTATION	PLAN & PROFILE			F.A.S. RTE.	SECTION	COUNTY	TOTAL SHEETS	SHEET NO.
c:\pwork\pwork\schwankerg\0179226\0366A18-sht-plnprf.dgn		DRAWN -	REVISED -		370	(102 BR) BR	LIVINGSTON	65	13			
PLOT SCALE = 40.0000' / in.		CHECKED -	REVISED -		CONTRACT NO. 66A18							
PLOT DATE = 8/13/2014		DATE -	REVISED -		ILLINOIS FED. AID PROJECT							