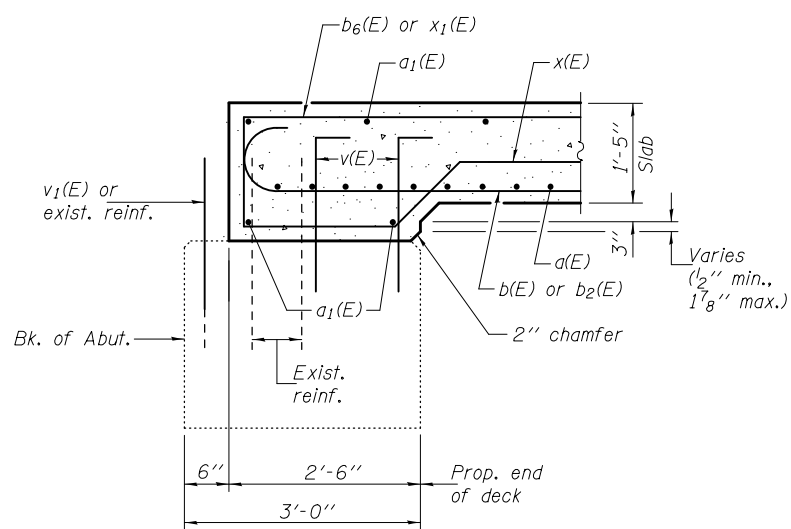
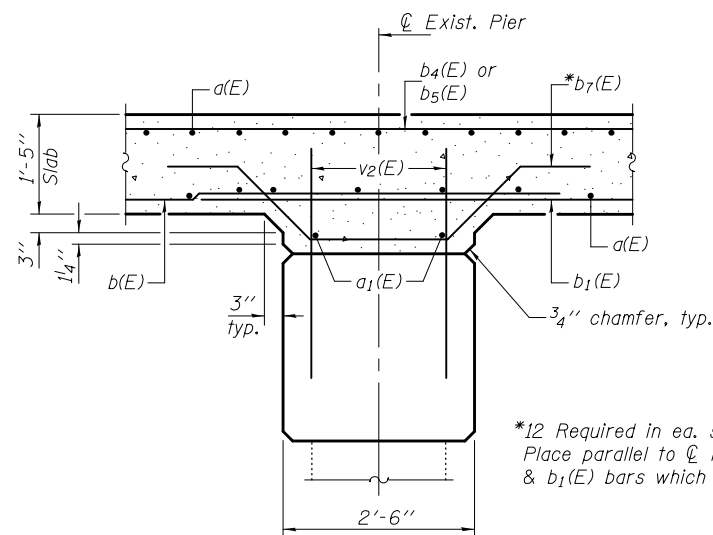


**RAIL POST SPACING**



**SECTION A-A**

Horizontal dimensions are at right L's



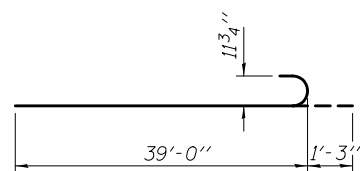
**SECTION B-B**

Horizontal dimensions are at right L's

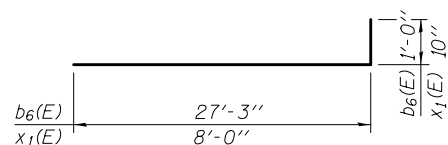
\*12 Required in ea. stage at ea. pier.  
Place parallel to  $\phi$  Rdwy. tied to b(E)  
& b1(E) bars which are lapped at piers

**BILL OF MATERIAL**

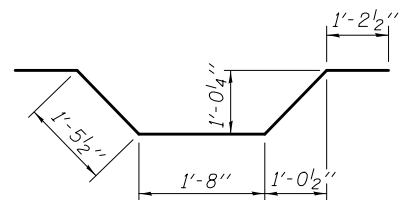
Bar	No.	Size	Length	Shape
a(E)	604	#6	14'-0"	—
a1(E)	96	#5	14'-0"	—
b(E)	48	#9	40'-3"	—
b1(E)	24	#9	40'-6"	—
b2(E)	88	#9	28'-0"	—
b3(E)	22	#9	24'-6"	—
b4(E)	68	#9	33'-0"	—
b5(E)	64	#9	21'-0"	—
b6(E)	68	#6	28'-3"	—
b7(E)	48	#5	7'-0"	—
b8(E)	32	#4	28'-3"	—
s(E)	260	#6	13'-3"	—
x(E)	56	#5	6'-0"	—
x1(E)	64	#5	8'-10"	—
Reinforcement Bars, Epoxy Coated			Pound	56340
Concrete Superstructure			Cu. Yds.	163.2



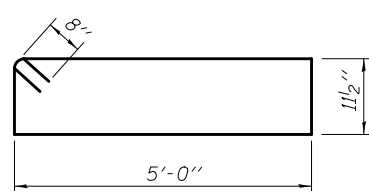
**BAR b(E)**



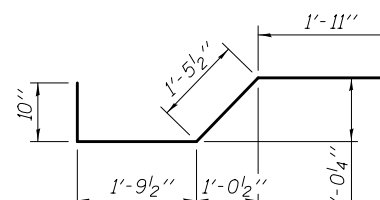
**BARS b6(E) & x1(E)**



**BAR b7(E)**



**BAR s(E)**



**BAR x(E)**

Note: For details, location and spacing of v(E) thru v2(E) bars, see sheets 13 & 14 of 18.

DESIGNED - Paul S. Johnson	EXAMINED - <i>Joanne F. [Signature]</i>	DATE - OCTOBER 16, 2014
CHECKED - Zachary T. Bulva	PASSED - <i>Carl [Signature]</i>	REVISED
DRAWN - h.t. duong	ACTING ENGINEER OF BRIDGES AND STRUCTURES	REVISED
CHECKED - PSJ/ZTB		

**STATE OF ILLINOIS  
DEPARTMENT OF TRANSPORTATION**

**SUPERSTRUCTURE DETAILS  
STRUCTURE NO. 053-0157**

SHEET NO. 9 OF 18 SHEETS

F.A.S. RTE.	SECTION	COUNTY	TOTAL SHEETS	SHEET NO.
370	(102BR)BR	LIVINGSTON	65	30
ILLINOIS FED. AID PROJECT			CONTRACT NO. 66A18	