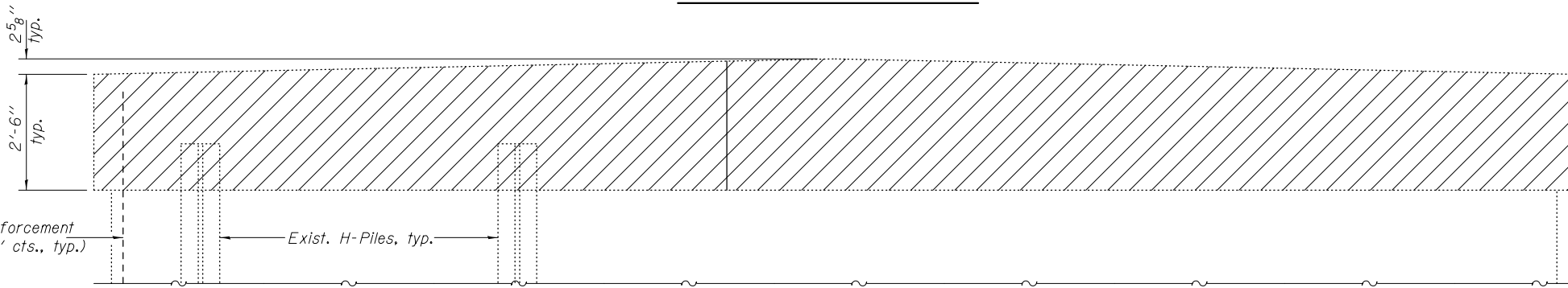


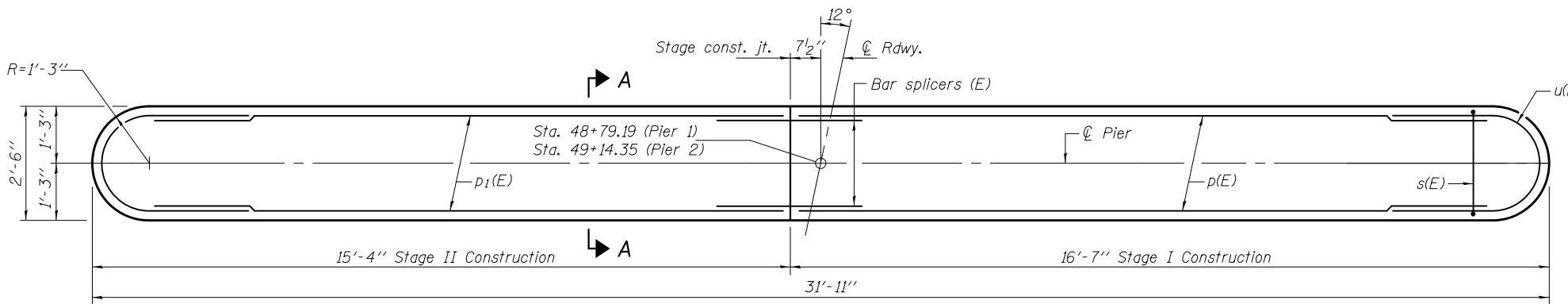
**PLAN - SHOWING REMOVAL**



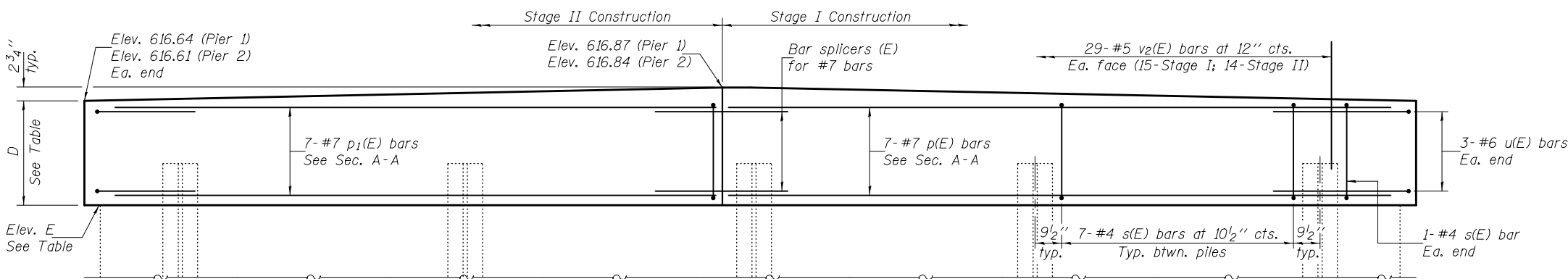
**ELEVATION - SHOWING REMOVAL**

(Looking West)

\*Existing reinforcement shall be cleaned and incorporated into new construction. Cost included in Concrete Removal.



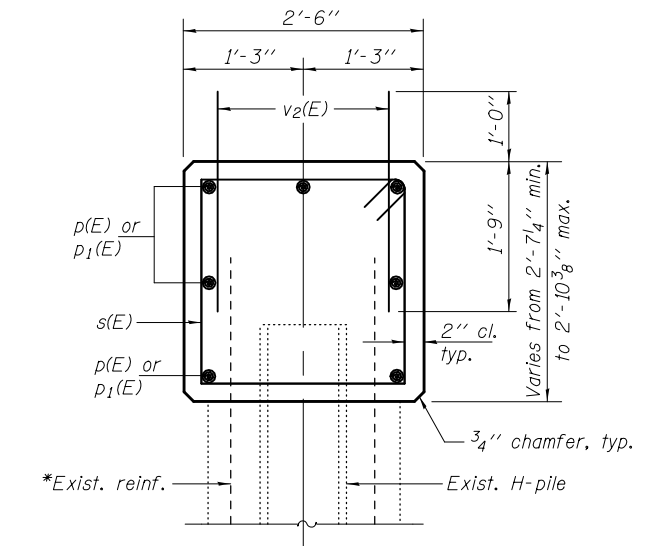
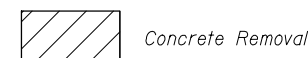
**PLAN**



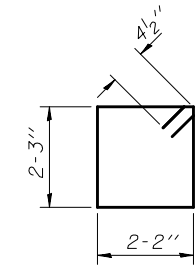
**ELEVATION**

(Looking West)

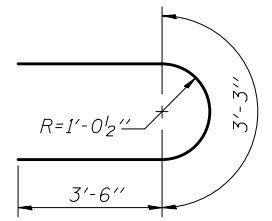
**LEGEND**



**SECTION A-A**



**BAR s(E)**



**BAR u(E)**

**TABLE**

Location	Dim. D	Elev. E
Pier 1 (South)	2'-7 1/4"	614.04
Pier 1 (North)	2'-7 1/2"	614.01
Pier 2 (South)	2'-7 3/8"	614.00
Pier 2 (North)	2'-7 5/8"	613.97

**TWO PIERS  
BILL OF MATERIAL**

Bar	No.	Size	Length	Shape
p(E)	14	#7	15'-0"	—
p1(E)	14	#7	13'-9"	—
s(E)	60	#4	9'-7"	□
u(E)	12	#6	10'-3"	U
v2(E)	116	#5	2'-9"	—
Concrete Removal			Cu. Yd.	15.2
Concrete Structures			Cu. Yd.	15.6
Reinforcement Bars, Epoxy Coated			Pound	1,720

DESIGNED - Paul S. Johnson  
 CHECKED - Zachary T. Bulva  
 DRAWN - h.t. duong  
 CHECKED - PSJ/ZTB

EXAMINED  
 PASSED  
 ACTING ENGINEER OF BRIDGE DESIGN  
 ACTING ENGINEER OF BRIDGES AND STRUCTURES

DATE - OCTOBER 16, 2014  
 REVISED  
 REVISED

**STATE OF ILLINOIS  
 DEPARTMENT OF TRANSPORTATION**

**EXISTING PIER DETAILS  
 STRUCTURE NO. 053-0157**

SHEET NO. 14 OF 18 SHEETS

F.A.S. RT.E. SECTION COUNTY TOTAL SHEETS SHEET NO.  
 370 (102BR)BR LIVINGSTON 65 35  
 CONTRACT NO. 66A18  
 ILLINOIS FED. AID PROJECT