

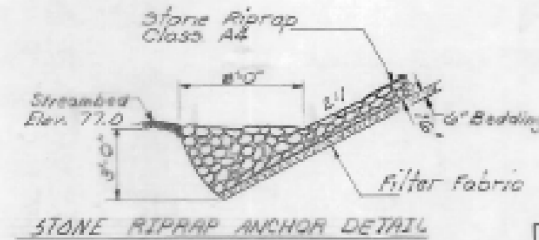
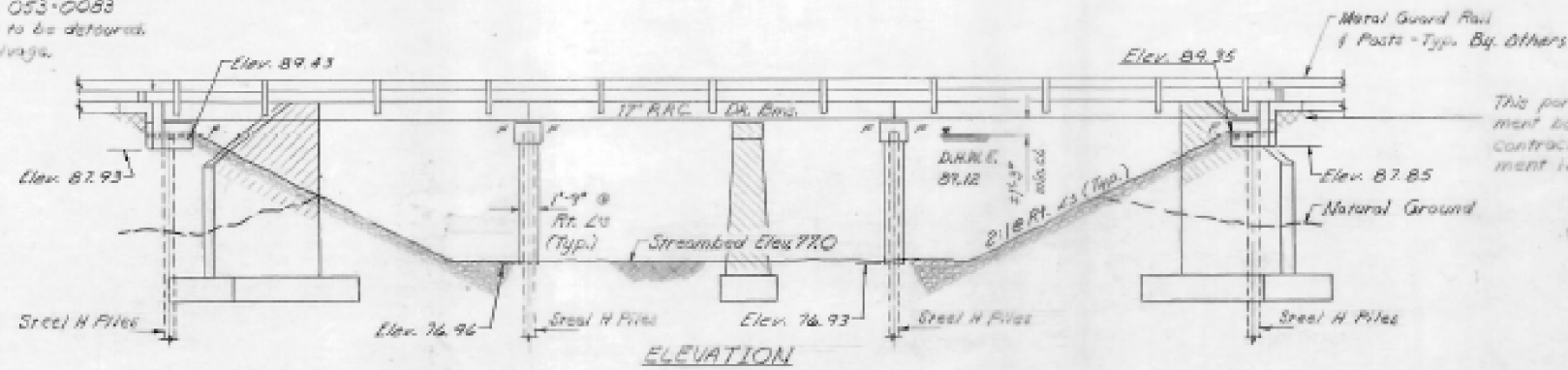
Bench Marks #1; Spike in power pole, 31 ft. right Sta. 45+12-assumed  
Elevation = 100.00  
Existing Structure: Built in 1927 as part of S.B.I. Rte. 118 as a R.C.D.G. 86'2" back to back abutments and 22'-0" face to face of rails. Portions of the existing structure are to be removed prior to the construction of a 3 span 17' R.R.G. Dr. Em. structure.  
S.M. 053-0083  
Traffic to be detoured.  
No savings.

STATE OF ILLINOIS  
DEPARTMENT OF TRANSPORTATION **FOR INFORMATION ONLY**

SECTION	COUNTY	TOTAL SHEETS	SHEET NO.
102BR	Livingston	65	43

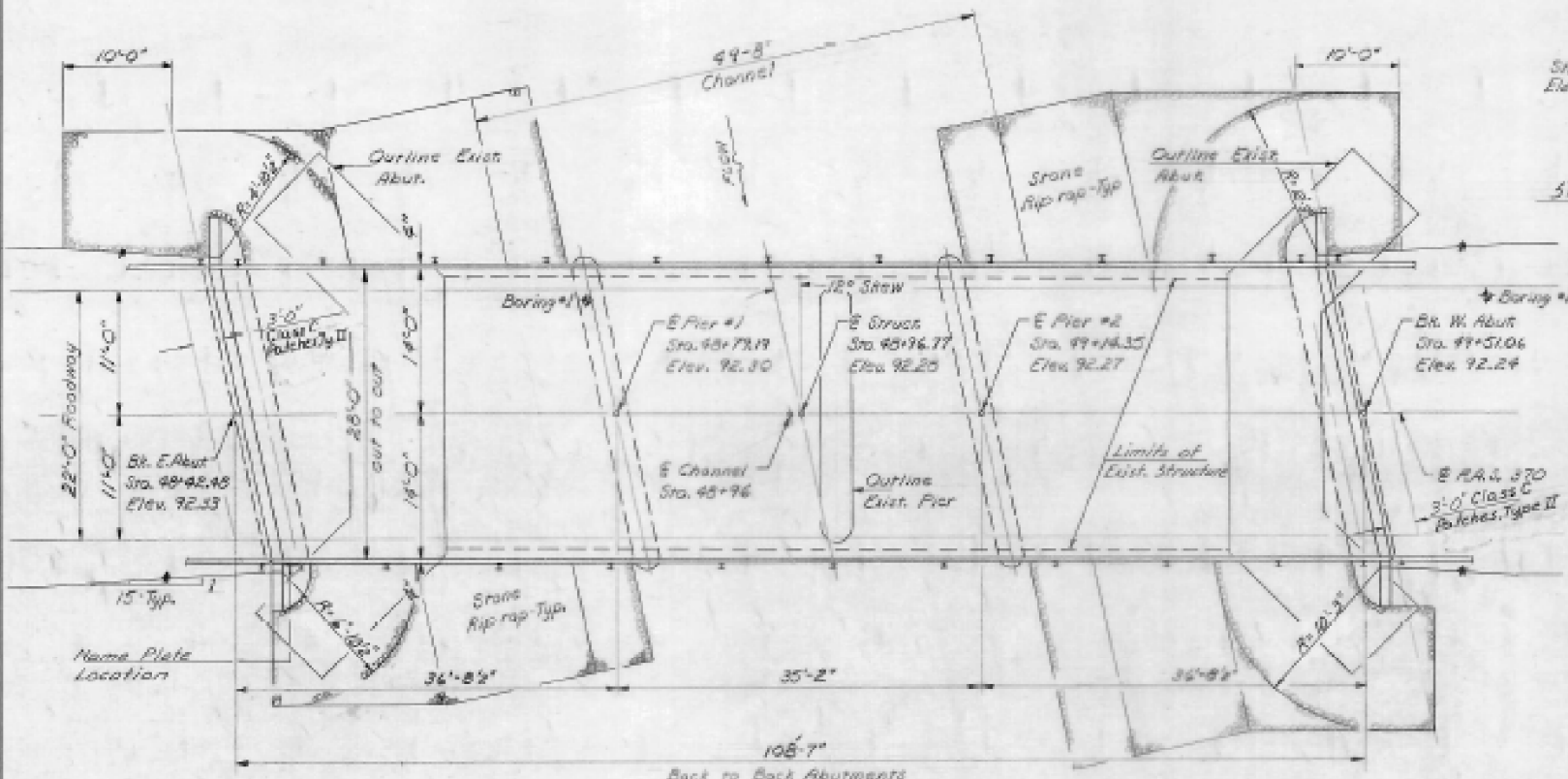
**GENERAL NOTES**

See Proposal for Boring Data.  
Reinforcement bars shall conform to the requirements of AASHTO M-31, M-42 or M-53 Grade 60.  
Layout of stone riprap may be varied in the field to suit ground conditions as directed by the Engineer.  
The top surface of the beams shall be finished in accordance with Article 505.06 of the Standard Specification except that the surface shall not be roughened by brooming. The finished surface shall be free of depressions or high spots with sharp corners, and the top edge of keys shall be rounded or chamfered a minimum of 1/4".  
A Calcium Nitrite Corrosion Inhibitor, as covered in the Special Provisions, shall be used in the concrete for precast prestressed concrete deck beams.  
The contractor shall drive one steel HP10x42 test pile in a permanent location of the East Abutment as directed by the Engineer before ordering the remainder of piles.



**TOTAL BILL OF MATERIAL**

ITEM	UNIT	SUPER	SUB	TOTAL
Bituminous Concrete Surface Course Class I	Tons	27		27
Precast Prestressed Concrete, Dr. Em. (P)	Sq. Ft.	2947		2947
Class I Concrete	Cu. Yds.	4.5	81.7	86.2
Reinforcement Bars	Lbs.		8170	8170
Waterproofing Membrane System	Sq. Yds.	334		334
Aluma Plates	Each	1		1
Removal of Existing Structures	Each		1	1
Test Piles - Steel (HP10x42)	Each		1	1
Driving Steel Piles (HP10x42)	Lin. Ft.		676	676
Portland Cement Mortar Facing Lsc.	Lin. Ft.	682		682
Steel Railings, Type NT	Lin. Ft.	211		211
Stone Riprap Class A4	Sq. Yds.		368	358
Furnishing Steel Piles (HP10x42)	Lin. Ft.		692	692
Class C Patches, Type II	Sq. Yds.	15		15
Structure Excavation	Cu. Yds.		151	151



**DESIGN STRESSES**  
Precast Prestress Units  
F<sub>c</sub> = 5000 p.s.i.  
F<sub>c</sub> = 4000 p.s.i.  
F<sub>c</sub> = 27000 p.s.i. (Ground)  
F<sub>c</sub> = 18000 p.s.i. (1 1/2" strand)  
Elast. Units  
F<sub>c</sub> = 3,500 psi  
f<sub>y</sub> = 60,000 psi (Reinforcement)

STA. 48+96.77  
BUILT 1927 BY  
STATE OF ILLINOIS  
F.A.S. RTE. 370 SEC. 102BR  
LOADING HS20  
STR. NO. 053-057

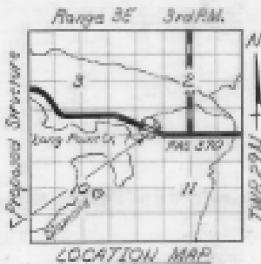
**NAME PLATE**  
(See Std. 213)

**WATERWAY INFORMATION**

Flood	Reg. Yr.	C.F.S.	Opening Sq. Ft.		Max. H.W.E.	Head - Ft.		Headwater El.	
			Exist.	Prop.		Exist.	Prop.	Exist.	Prop.
Design	30	4600	790	829	29.12	0.82	0.79	89.94	89.91
Base	100	5070	790	877	31.07	1.35	1.25	91.22	91.12
Overlapping	200	5250	790	955	30.45	1.63	1.65	91.83	92.1
Max. Cvtc.		500							

LOADING HS20-44  
Design Specifications  
1983 A.A.S.H.T.O.

Allow 25#/sq.ft. for future wearing surface.



**GENERAL PLAN**  
S.B.I. RTE. 118 OVER LONG POINT CREEK  
F.A.S. RTE. 370 SEC. 102BR  
LIVINGSTON COUNTY  
STATION 48+96.77  
STR. NO. 053-057

DESIGNED: David K. M. M...  
CHECKED: Thomas D...  
DRAWN: A. Sommer  
REVISIONS: December 3, 1984

REVISED: TJD 1-3-85 REVISED: PMV 1-5-88