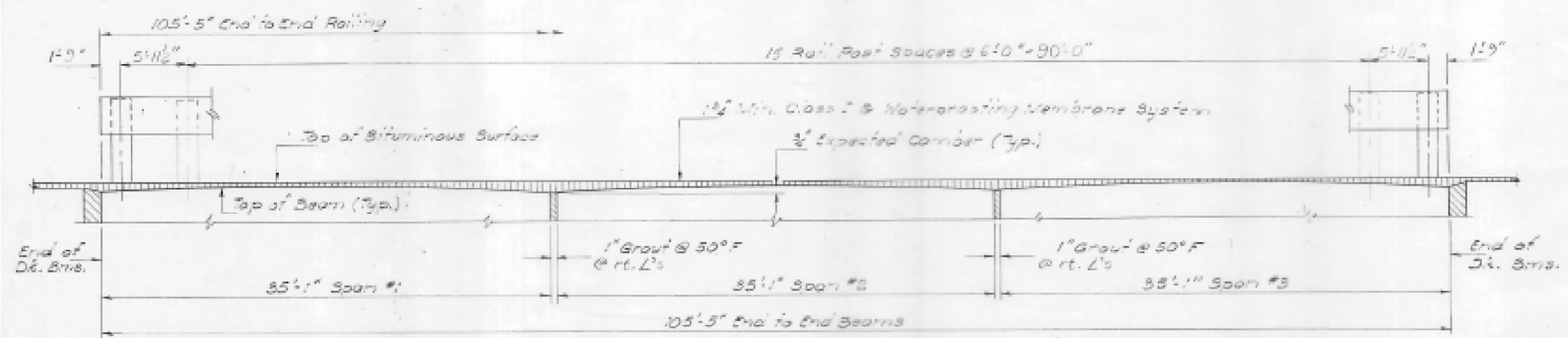


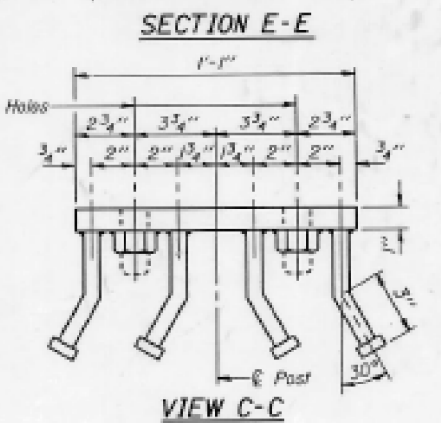
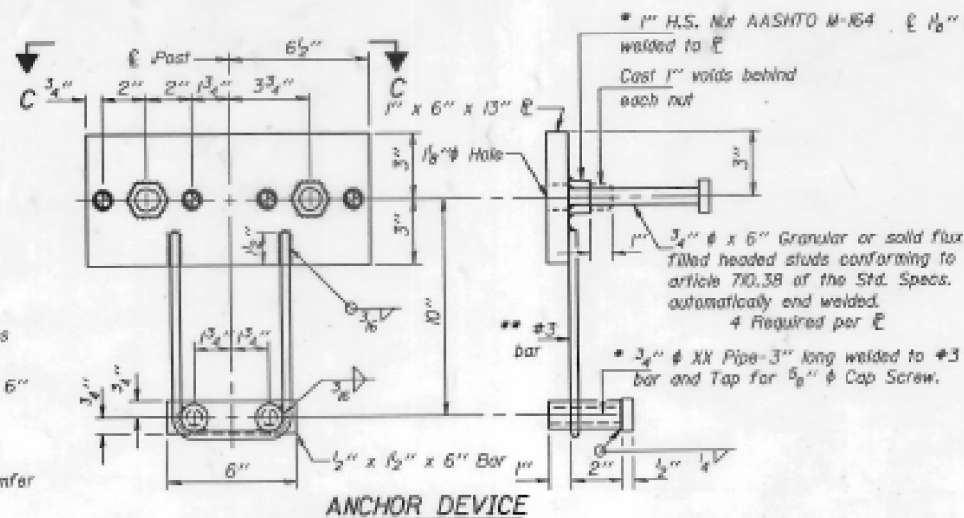
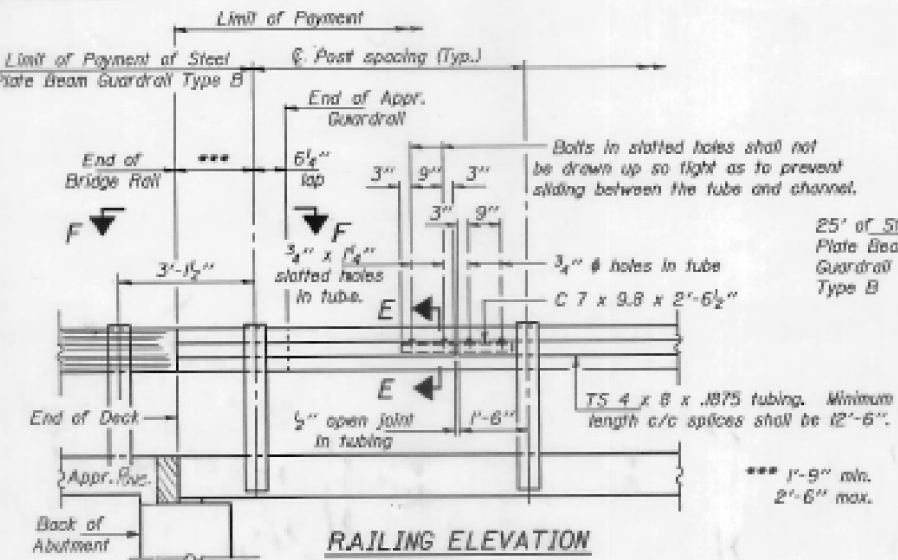
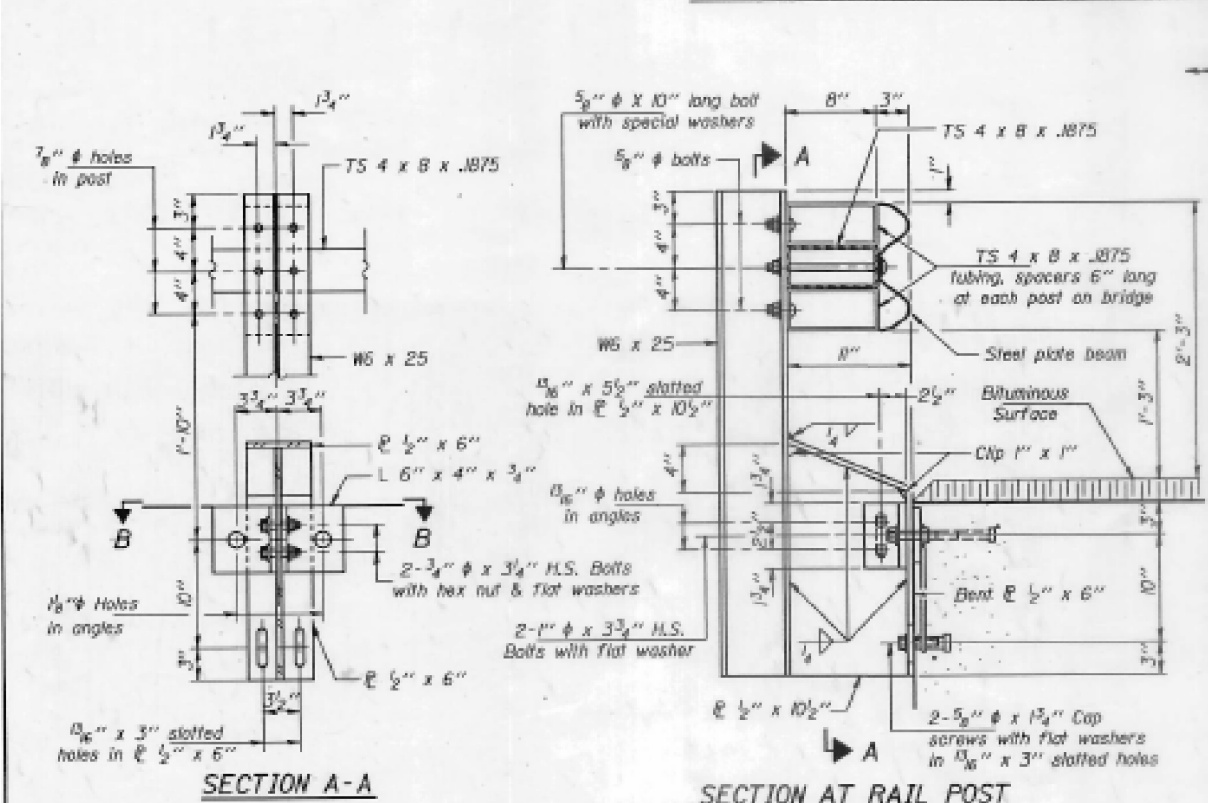
PROJECT NO.	SECTION	DATE	BY	CHECKED	SHEET NO.
370	102BR	Livingston	12	ID	5
					TOTAL SHEETS
					65
					CONTRACT NO.
					66A18

NOTES

Hollow structural steel tubing shall conform to the requirements of ASTM designation A-500 Grade B Structural Steel Tubing.
 All other steel shapes and plates shall conform to the requirements of AASHTO M-103 except posts and angles shall conform to AASHTO M-223, Grade 50.
 Bolts, cap screws and nuts shall conform to the requirements of ASTM designation A-307 except for high strength bolts, nuts and washers noted which shall conform to AASHTO M-164.
 All bolts, nuts, cap screws, washers and lock washers shall be galvanized in accordance with AASHTO M-232.
 All posts, railing, rail splices, anchor devices and angles shall be galvanized after shop fabrication in accordance with AASHTO M-11 and ASTM A-385. Galvanized rail shall not be painted.
 Railing shall be in accordance with Section 508 of the Standard Specifications, except as noted, and will be paid for at the contract unit price per lined foot for STEEL RAILING, TYPE WT.
 All field drilled holes shall be coated with an approved zinc rich paint before erection.
 The 1/2" x 6" plates that come in contact with concrete shall receive two coats of asphalt paint conforming to Section 714.08 Type B or place 1/4" fabric bearing pads between the plates and concrete.
 The 3/4" high strength bolts used to connect the 6" x 4" x 3/4" angles to the post shall be tightened in accordance with Article 507.04(g)(3) of the Standard Specifications. The 1" # high strength bolts connecting the angles to the concrete shall be tightened to a snug fit and given an additional 1/2 turn. The 5/8" # cap screws in bottom of posts shall be tightened to a snug fit only.
 For multi-span bridges, sufficient 1/4" x 6" x 1'-2" galvanized steel shims shall be provided to align rail between adjacent spans. Cost incidental to Steel Railing.



ELEVATION & BITUMINOUS SURFACE PROFILE



BILL OF MATERIAL

Item	Unit	Quantity
Steel Railing, Type WT	Lin. Ft.	277

TYPE WT STEEL RAILING
 F.A.S. RT. 370 SEC. 102BR
 LIVINGSTON COUNTY
 STA. 43+96.77

DESIGNED: John Schenkler
 CHECKED: [Signature]
 DRAWN: J. Schenkler
 CHECKED: [Signature]
 EXAMINED: [Signature]
 PASSED: [Signature]
 APPROVED: [Signature]
 R-30 9/30/87 6'-3" Maximum Post Spacing