

SN 038-0123 NB
 GUARDRAIL REMOVAL-288'
 SPBGR TY A 6 FT-128.125'
 TBT TYPE 6-1 EACH
 TBT TYPE 1 (SPEC)-1 EACH

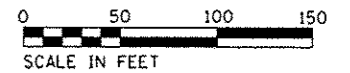
STA. 132+00
 NB 36"x61" RCCP
 W/MEDIAN INLET
 REPLACE MISSING
 GRATE ON MEDIAN
 INLET

HMA SHLDS, 6" FOR SPBGR
 STABILIZATION (TYR.)

STA. 132+00
 SB 36"x66" RCCP
 NO WORK

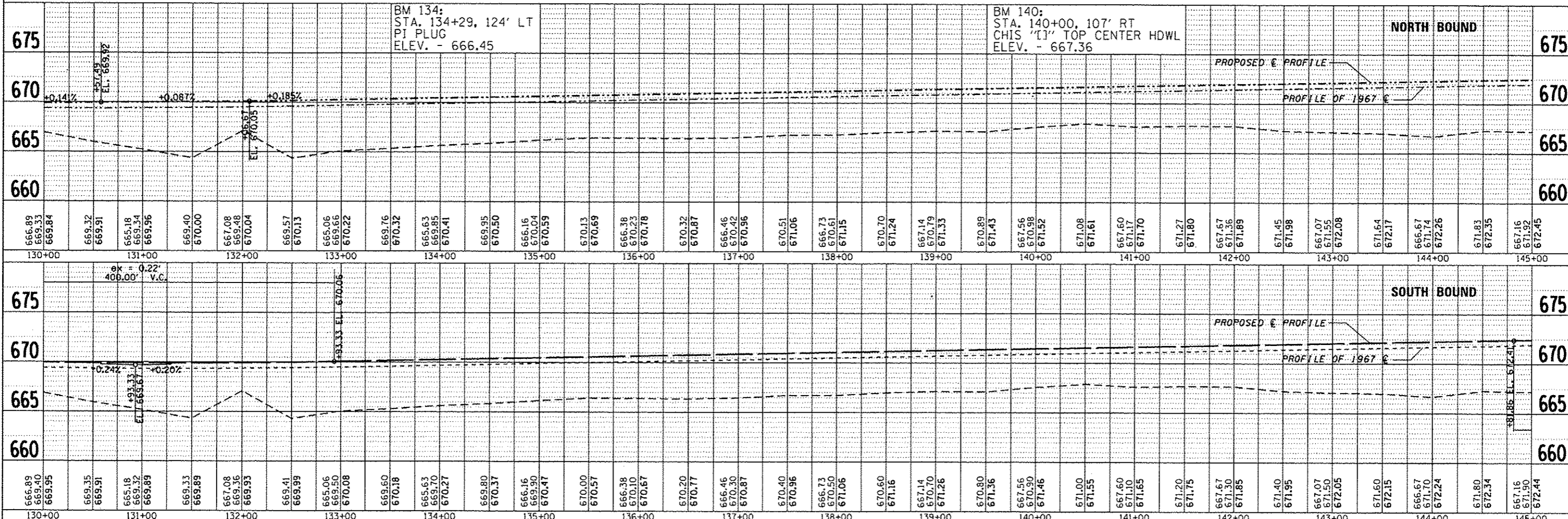
EXIST. CURVE I571R0-4
 PI STA. = 134+29.41
 $\Delta = 23^\circ 37' 37''$ (RT)
 $D = 1^\circ 00' 00''$
 $R = 5,729.68'$
 $T = 1,198.39'$
 $L = 2,362.72'$
 $E = 123.98'$
 $e = 0.0334$
 P.C. STA. = 122+31.02
 P.T. STA. = 145+93.74
 SUPER TRANSITIONS
 STA. 121+18.42 TO STA. 122+64.42
 STA. 145+60.34 TO STA. 147+06.34

STA. 7+50 RAMP D
 24"x61" RCCP
 REMOVE END SECTION
 ADD CONC END SECTION 24"



PLAN	DATE
REVISIONS	BY
NO.	
NO.	
NO.	
NO.	
NO.	
NO.	
NO.	
NO.	
NO.	

PROFILE	DATE
REVISIONS	BY
NO.	
NO.	
NO.	
NO.	
NO.	
NO.	
NO.	
NO.	
NO.	



FILE NAME :	USER NAME :	DESIGNED :	REVISED :
cr:\p\work\p\sidot\dunobnd\0315942\0366653-plansheeta.dgn	dunobnd	CHECKED -	REVISED -
PLOT SCALE = 1/80,000" = 1/8"		DRAWN -	REVISED -
PLOT DATE = 6/18/2014		CHECKED -	REVISED -

STATE OF ILLINOIS
 DEPARTMENT OF TRANSPORTATION

PLAN AND PROFILE

F.A.T. RTE. 57	SECTION (38-3)RS-2	COUNTY IROQUOIS	TOTAL SHEETS 186	SHEET NO. 26
SCALE: 1"=50'		SHEET NO. 4 OF 31 SHEETS		STA. 130+00 TO STA. 145+00
CONTRACT NO. 66C53			FED. ROAD DIST. NO. (ILLINOIS) FED. AID PROJECT	