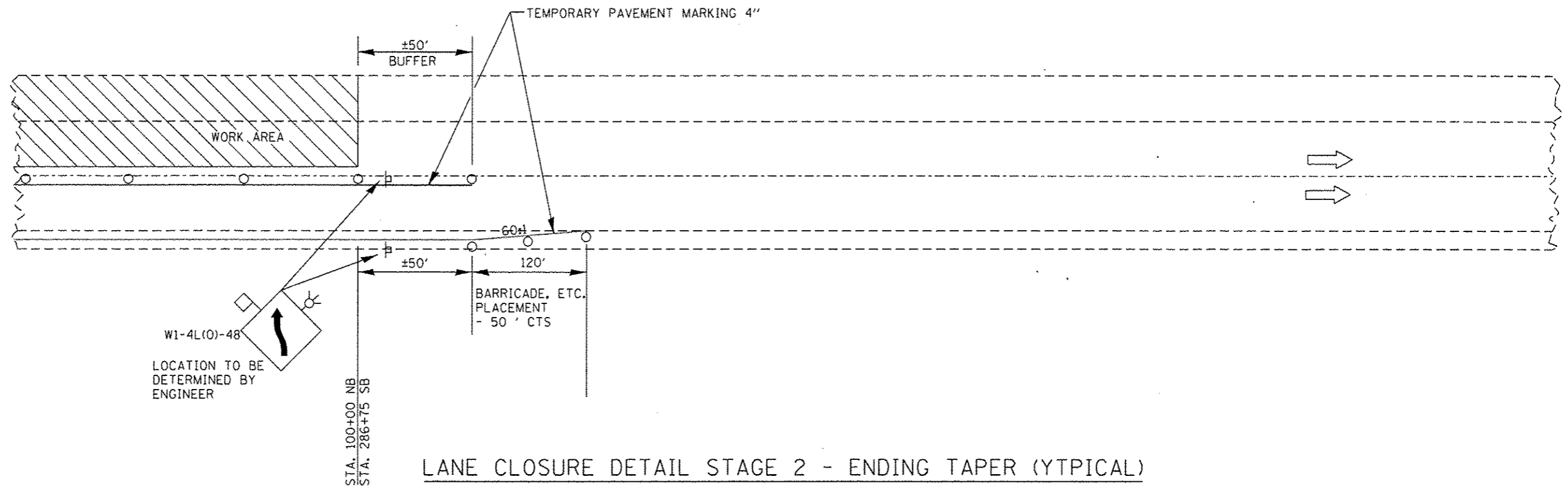


LANE CLOSURE DETAIL STAGE 2 - BEGINNING TAPER (TYPICAL)
NORTHBOUND & SOUTHBOUND

TRAFFIC CONTROL DEVICES SHOWN TO BE INCLUDED IN COST OF TC & P 701401 (SPECIAL)



LANE CLOSURE DETAIL STAGE 2 - ENDING TAPER (TYPICAL)
NORTHBOUND & SOUTHBOUND

FILE NAME :	USER NAME : duncanbd	DESIGNED -	REVISED -	STATE OF ILLINOIS DEPARTMENT OF TRANSPORTATION	TRAFFIC CONTROL STAGING			F.A.I. RTE.	SECTION	COUNTY	TOTAL SHEETS	SHEET NO.
ct:\pw\work\p\dot\duncanbd\0315542\036	033-shl-staging and TC.dgn	DRAWN -	REVISED -		57	38-31RS-2	IRROQUOIS	186	40			
PLOT SCALE : 100.0000' / in.	CHECKED -	REVISED -	REVISED -		SCALE: SHEET OF SHEETS STA. TO STA.		CONTRACT NO. 66C53		ILLINOIS FED. AID PROJECT			
PLOT DATE : 6/18/2014	DATE -	REVISED -	REVISED -									