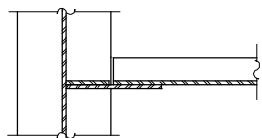
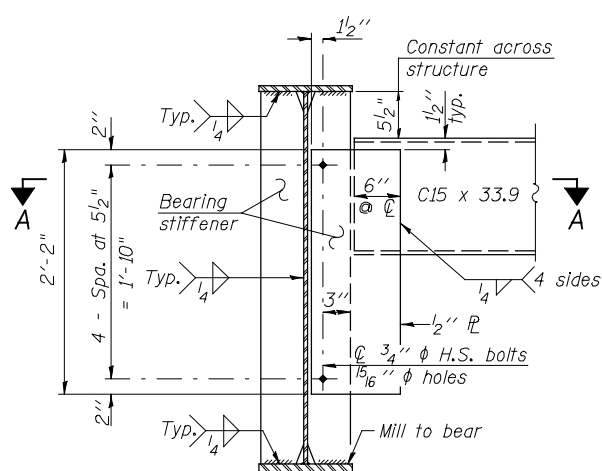


SECTION A-A

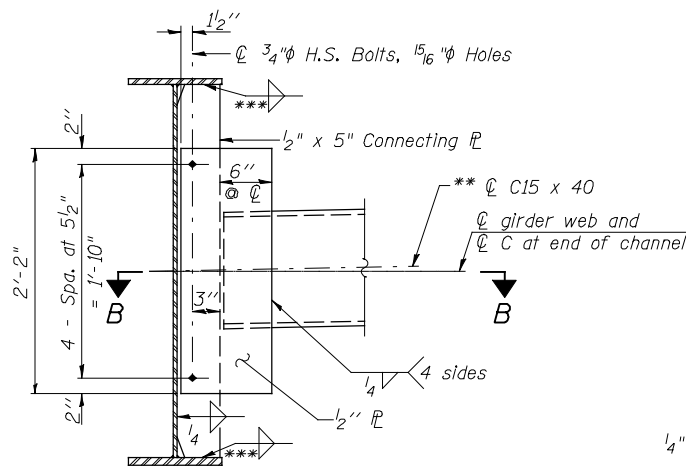


SECTION B-B



END DIAPHRAGM, D1  
(10 Required)

Note: Two hardened washers required for each set of oversized holes.

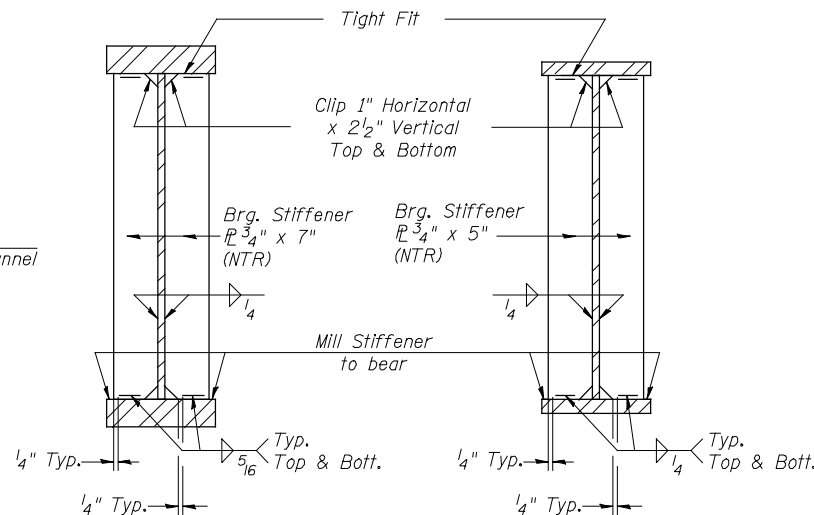


INTERIOR DIAPHRAGM, D  
(65 Required)

Note:  
Two hardened washers required for each set of oversized holes.

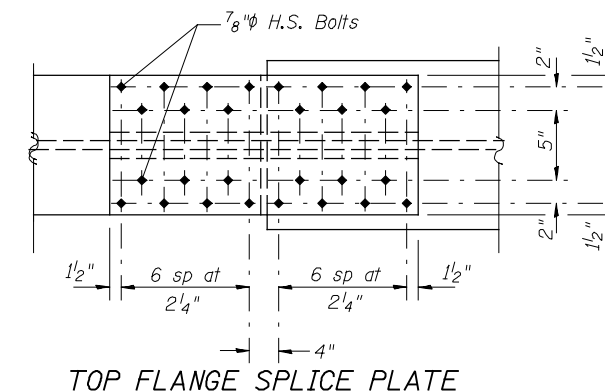
\*\* Alternate channel C15x50 are permitted to facilitate material acquisition. Calculated weight of structural steel is based on C15x40 sections. The alternate, if utilized, shall be provided at no extra cost to the department.

\*\*\* 1/4" for 3/4" flange plates, 5/16" for all others

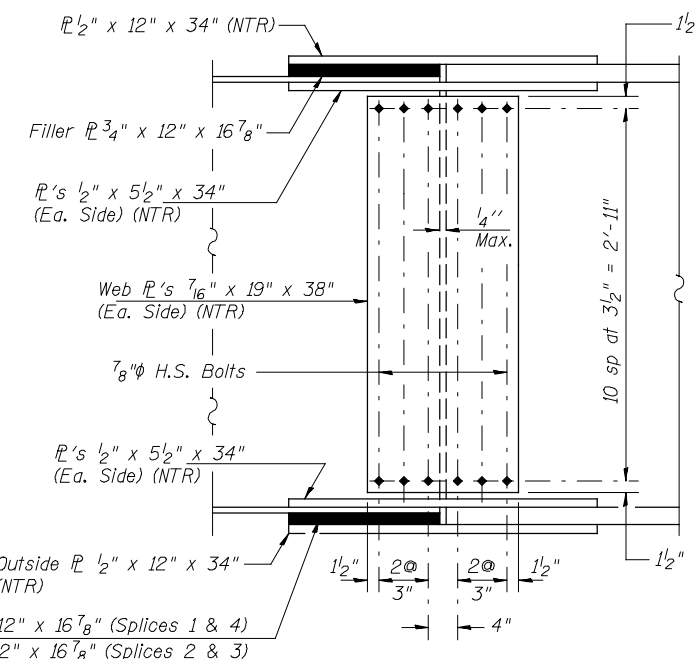


SECTION AT PIERS  
1 & 2

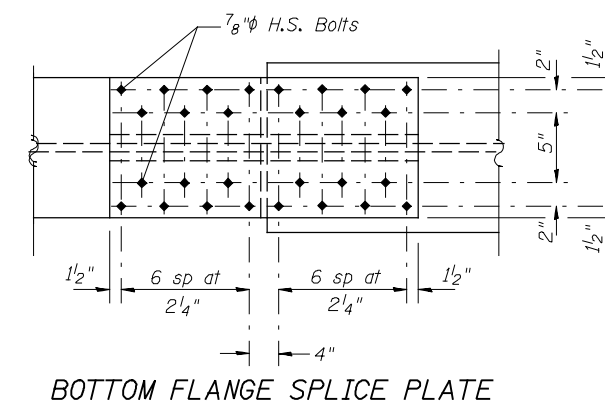
SECTION AT N. ABUTMENT  
& N. BRG. PIER 3



TOP FLANGE SPLICE PLATE



WEB SPLICE PLATE



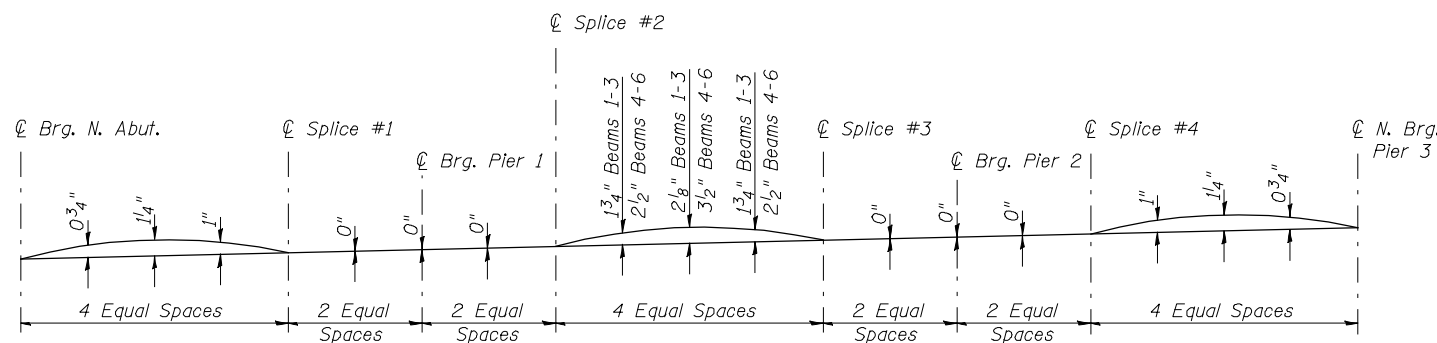
BOTTOM FLANGE SPLICE PLATE

FIELD SPLICE DETAIL

\* TOP OF WEB ELEVATIONS

Location	Girder 1	Girder 2	Girder 3	Girder 4	Girder 5	Girder 6
⊕ Brg. at N. Abut.	643.98	644.24	644.50	644.76	645.02	645.29
⊕ Splice 1	644.29	644.57	644.82	645.08	645.35	645.61
⊕ Brg. at Pier 1	644.48	644.75	645.01	645.27	645.54	645.80
⊕ Splice 2	644.62	644.89	645.15	645.41	645.68	645.94
⊕ Splice 3	644.71	644.90	645.10	645.30	645.50	645.69
⊕ Brg. at Pier 2	644.61	644.77	644.93	645.07	645.21	645.35
⊕ Splice 4	644.48	644.59	644.70	644.78	644.84	644.90
⊕ N. Brg. at Pier 3	643.99	644.11	644.21	644.25	644.19	644.12

\* For fabrication only



CAMBER DIAGRAM

Notes:  
All diaphragms between girders shall be installed with erection pins and bolts in accordance with the erection plan approved by the Engineer. Individual diaphragms at supports may be temporarily disconnected to install bearing anchor rods.  
Load carrying components designated "NTR" shall conform to the Impact Testing Requirement, Zone 2.