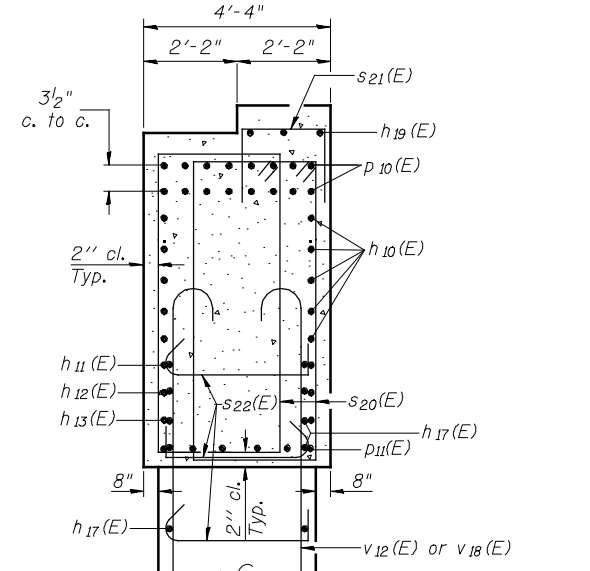
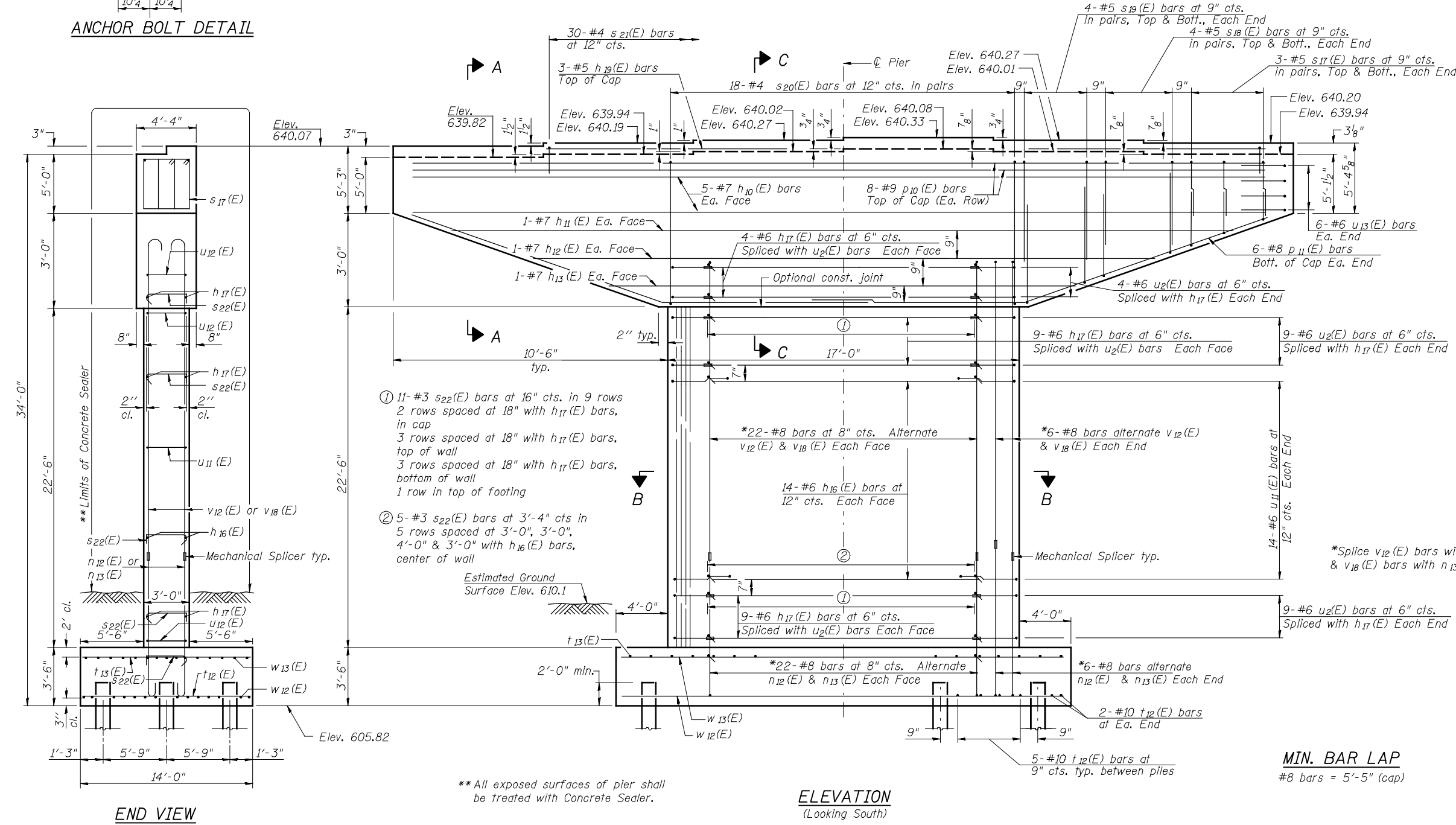
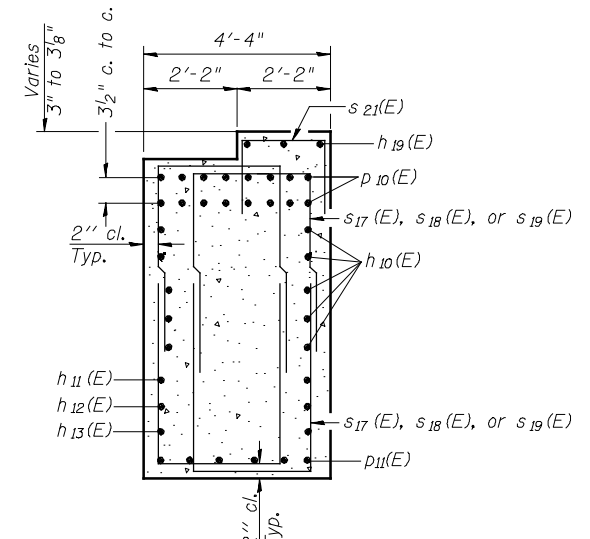
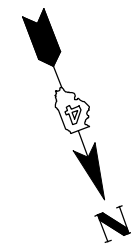
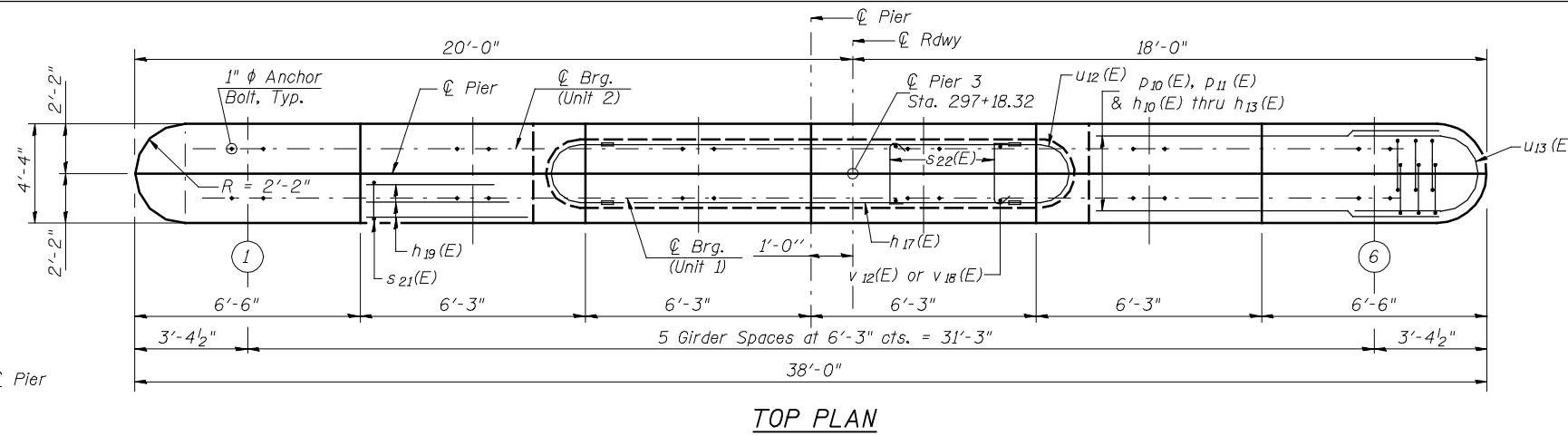
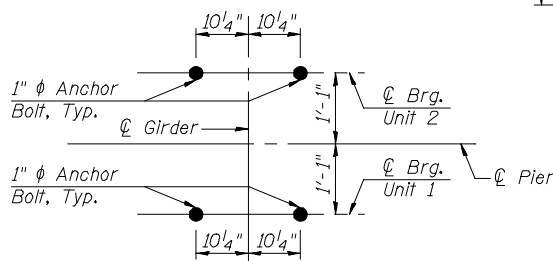


Notes:

Space reinforcement in cap to miss anchor bolts.
 Pour steps monolithically with cap.
 For details of piles, see sheet 53 of 62.



PILE DATA

Type: Metal Shell 14" dia. x 0.312" Walls with Pile Shoes
 Nominal Required Bearing: 321^k
 Factored Resistance Available: 177^k
 Est. Length: 29'
 No. Production Piles: 17
 No. Test Piles: 1

MIN. BAR LAP
 #8 bars = 5'-5" (cap)

Hutchison Engineering, Inc.
 Jacksonville, Peoria, & Shorewood, Illinois

USER NAME = jdean	DESIGNED - JOH	REVISED -
PLOT SCALE = NONE	CHECKED - BAN	REVISED -
PLOT DATE = 7/25/2013	DRAWN - TAC	REVISED -
	CHECKED - JOH/BAN	REVISED -

STATE OF ILLINOIS
DEPARTMENT OF TRANSPORTATION

PIER 3 DETAILS
STRUCTURE NO. 062-0086

F.A.P. RTE. 698	SECTION (125VBR)BR	COUNTY MARSHALL	TOTAL SHEETS 148	SHEET NO. 70
			CONTRACT NO. 68580	
ILLINOIS FED. AID PROJECT				