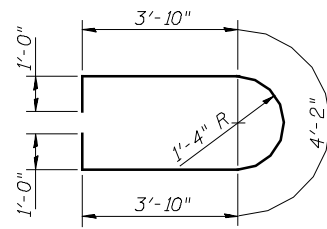
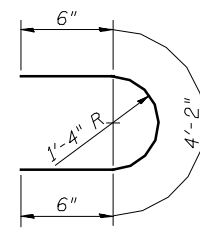


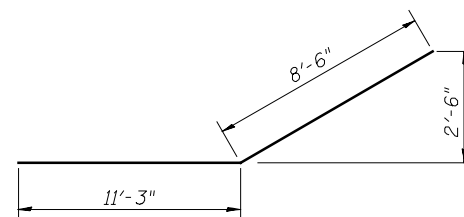
BAR  $u_{10}(E)$



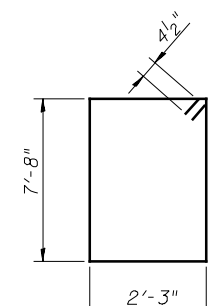
BAR  $u_{11}(E)$



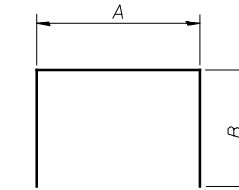
BAR  $u_{12}(E)$



BAR  $p_{11}(E)$



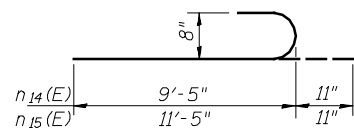
BAR  $s_{15}(E)$



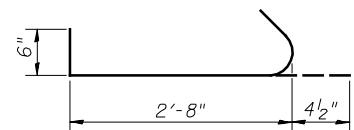
BARS  $s_{12}(E)$ ,  
 $s_{13}(E)$ , &  $s_{14}(E)$

A & B DIMENSIONS

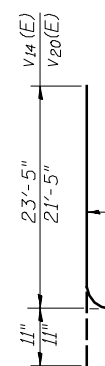
Bar	A	B
$s_{12}(E)$	2'-3"	4'-1"
$s_{13}(E)$	2'-3"	4'-7"
$s_{14}(E)$	2'-3"	5'-3"



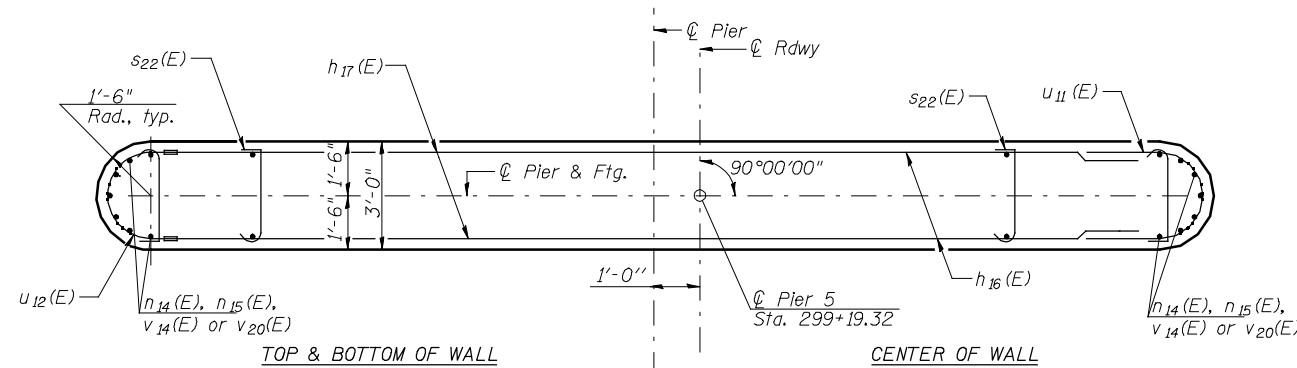
BAR  $n_{14}(E)$  &  $n_{15}(E)$



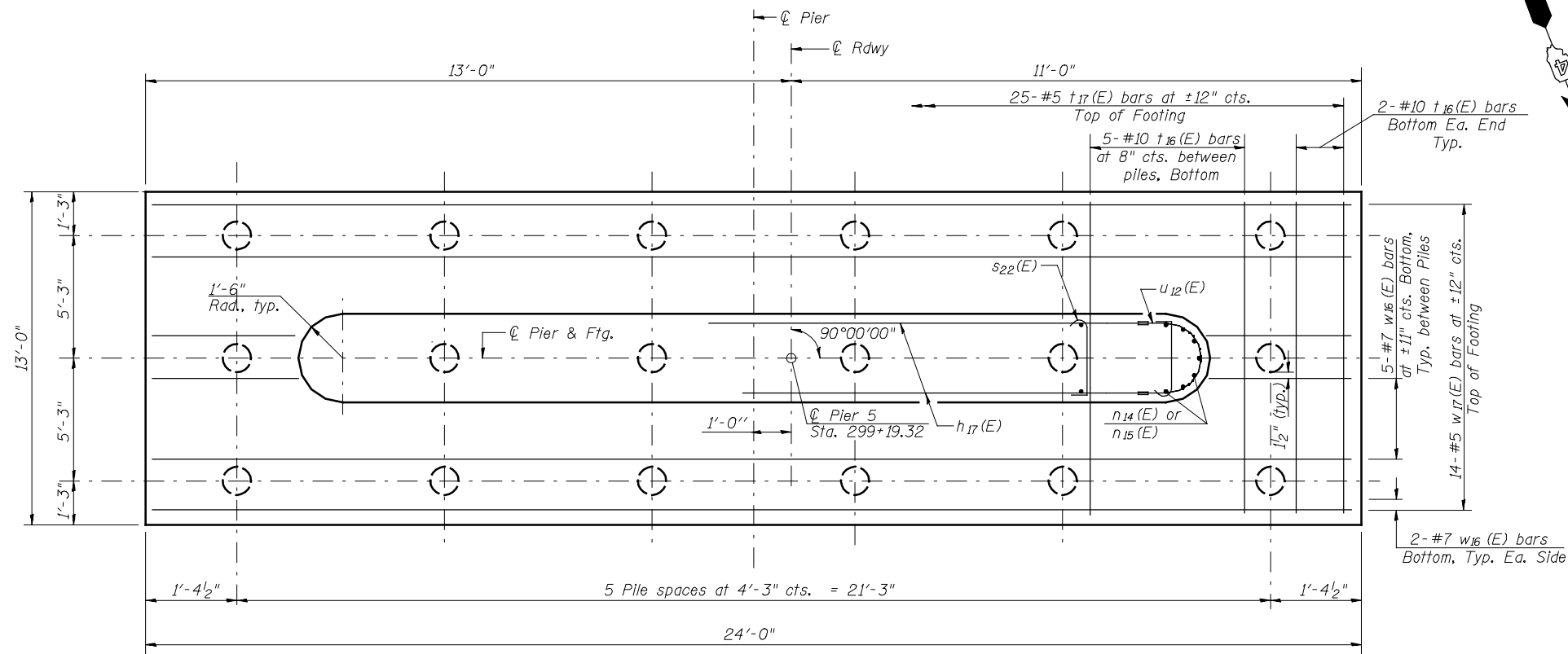
BAR  $s_{22}(E)$



BAR  $v_{14}(E)$  &  $v_{20}(E)$



SECTION B-B



FOOTING PLAN

PIER 5  
BILL OF MATERIAL

Bar	No.	Size	Length	Shape
$h_{10}(E)$	10	#7	33'-8"	—
$h_{11}(E)$	2	#7	31'-8"	—
$h_{12}(E)$	2	#7	27'-0"	—
$h_{13}(E)$	2	#7	22'-0"	—
$h_{16}(E)$	34	#6	14'-0"	—
$h_{17}(E)$	48	#6	13'-0"	—
$n_{14}(E)$	28	#8	10'-4"	U
$n_{15}(E)$	28	#8	12'-4"	U
$p_{10}(E)$	16	#9	33'-8"	—
$p_{11}(E)$	10	#8	19'-9"	—
$s_{12}(E)$	24	#5	10'-5"	□
$s_{13}(E)$	32	#5	11'-5"	□
$s_{14}(E)$	32	#5	12'-9"	□
$s_{15}(E)$	36	#4	20'-7"	□
$s_{22}(E)$	146	#3	3'-7"	U
$t_{16}(E)$	29	#10	12'-8"	—
$t_{17}(E)$	25	#5	12'-8"	—
$u_{10}(E)$	12	#6	12'-3"	U
$u_{11}(E)$	34	#6	13'-10"	U
$u_{12}(E)$	48	#6	5'-2"	U
$v_{14}(E)$	28	#8	24'-4"	U
$v_{20}(E)$	28	#8	22'-4"	U
$w_{16}(E)$	14	#7	23'-8"	—
$w_{17}(E)$	14	#5	23'-8"	—
Concrete Structures		CU YD	127.6	
Reinforcement Bars, Epoxy Coated		POUND	16,050	
Furnishing Metal Shell Piles 14" x 0.312"		FOOT	493	
Driving Piles		FOOT	493	
Test Pile Metal Shells		EACH	1	
Pile Shoes		EACH	18	
Cofferdam (Type 2) (Location - 1)		EACH	1	
Seal Coat Concrete		CU YD	61.7	
Cofferdam Excavation		CU YD	290	

