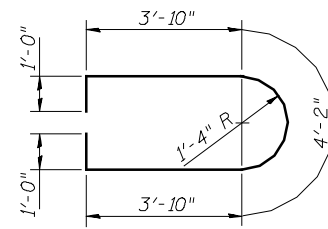
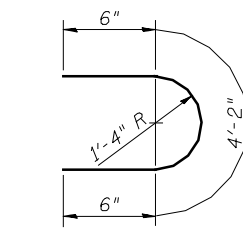


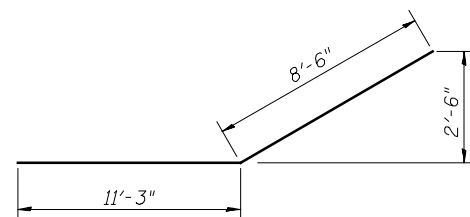
BAR $u_{10}(E)$



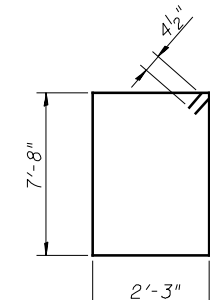
BAR $u_{11}(E)$



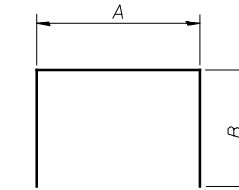
BAR $u_{12}(E)$



BAR $p_{11}(E)$



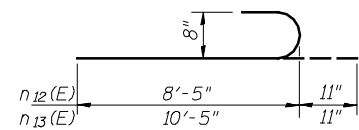
BAR $s_{15}(E)$



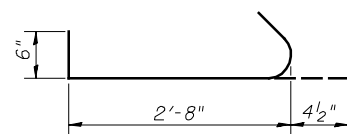
BARS $s_{12}(E)$,
 $s_{13}(E)$, & $s_{14}(E)$

A & B DIMENSIONS

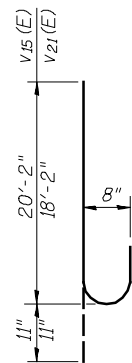
Bar	A	B
$s_{12}(E)$	2'-3"	4'-1"
$s_{13}(E)$	2'-3"	4'-7"
$s_{14}(E)$	2'-3"	5'-3"



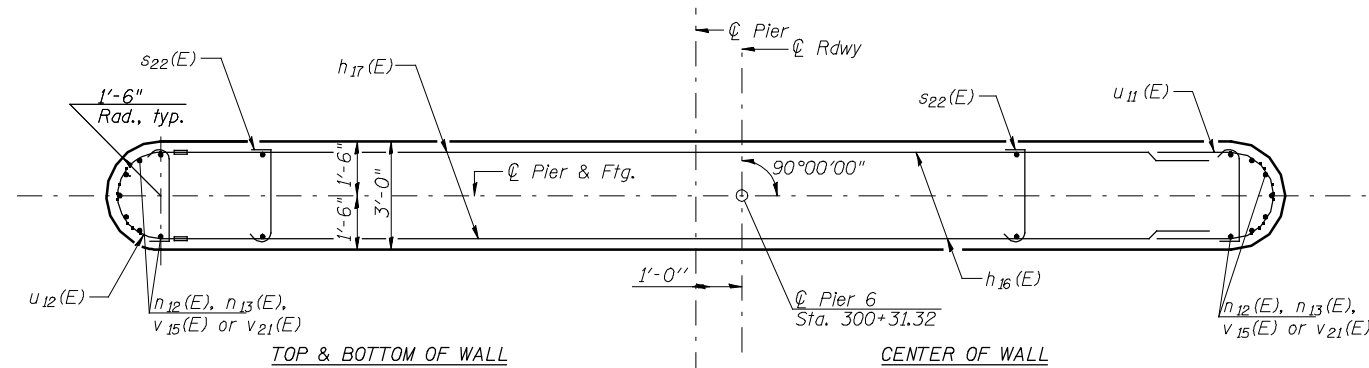
BAR $n_{12}(E)$ & $n_{13}(E)$



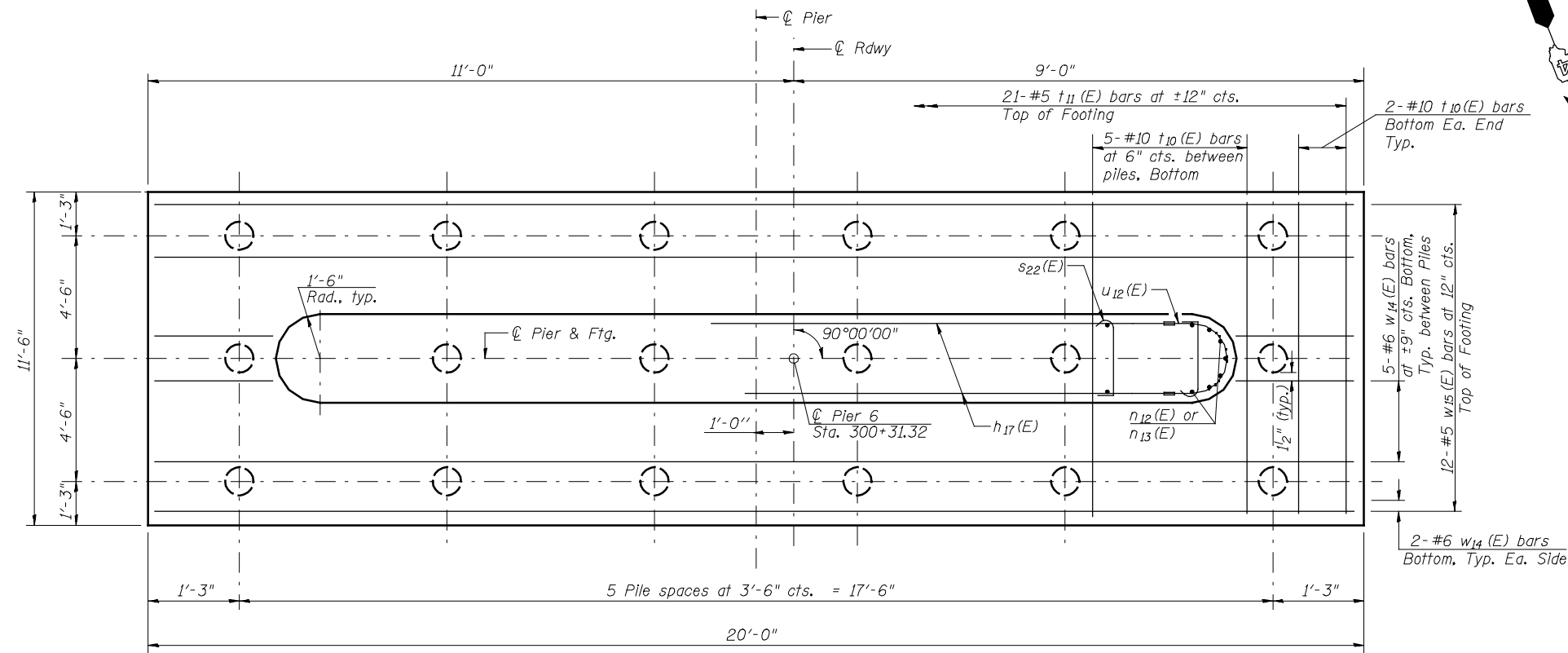
BAR $s_{22}(E)$



BAR $v_{15}(E)$ & $v_{21}(E)$



SECTION B-B



FOOTING PLAN

PIER 6
BILL OF MATERIAL

Bar	No.	Size	Length	Shape
$h_{10}(E)$	10	#7	33'-8"	—
$h_{11}(E)$	2	#7	31'-8"	—
$h_{12}(E)$	2	#7	27'-0"	—
$h_{13}(E)$	2	#7	22'-0"	—
$h_{16}(E)$	30	#6	14'-0"	—
$h_{17}(E)$	44	#6	13'-0"	—
$n_{12}(E)$	28	#8	9'-4"	U
$n_{13}(E)$	28	#8	11'-4"	U
$p_{10}(E)$	16	#9	33'-8"	—
$p_{11}(E)$	10	#8	19'-9"	—
$s_{12}(E)$	24	#5	10'-5"	□
$s_{13}(E)$	32	#5	11'-5"	□
$s_{14}(E)$	32	#5	12'-9"	□
$s_{15}(E)$	36	#4	20'-7"	□
$s_{22}(E)$	124	#3	3'-7"	U
$t_{10}(E)$	29	#10	11'-2"	—
$t_{11}(E)$	21	#5	11'-2"	—
$u_{10}(E)$	12	#6	12'-3"	U
$u_{11}(E)$	30	#6	13'-10"	U
$u_{12}(E)$	44	#6	5'-2"	U
$v_{15}(E)$	28	#8	21'-1"	U
$v_{21}(E)$	28	#8	19'-1"	U
$w_{14}(E)$	14	#6	19'-8"	—
$w_{15}(E)$	12	#5	19'-8"	—
Concrete Structures		CU YD	104.4	
Reinforcement Bars, Epoxy Coated		POUND	14,740	
Furnishing Metal Shell Piles 14" x 0.312"		FOOT	714	
Driving Piles		FOOT	714	
Test Pile Metal Shells		EACH	1	
Pile Shoes		EACH	18	
Cofferdam (Type 2) (Location 2)		EACH	1	
Seal Coat Concrete		CU YD	48.2	
Cofferdam Excavation		CU YD	246	