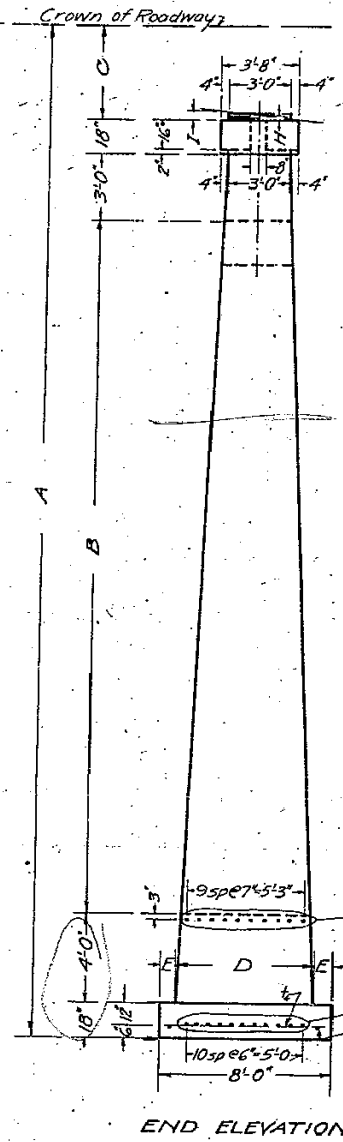


STATE OF ILLINOIS  
DEPARTMENT OF PUBLIC WORKS & BUILDINGS  
DIVISION OF HIGHWAYS

BOND ISSUE	SEC.	COUNTY	TOTAL SHEETS	SHEET NO.
89	125V-B	Marshall	18	16

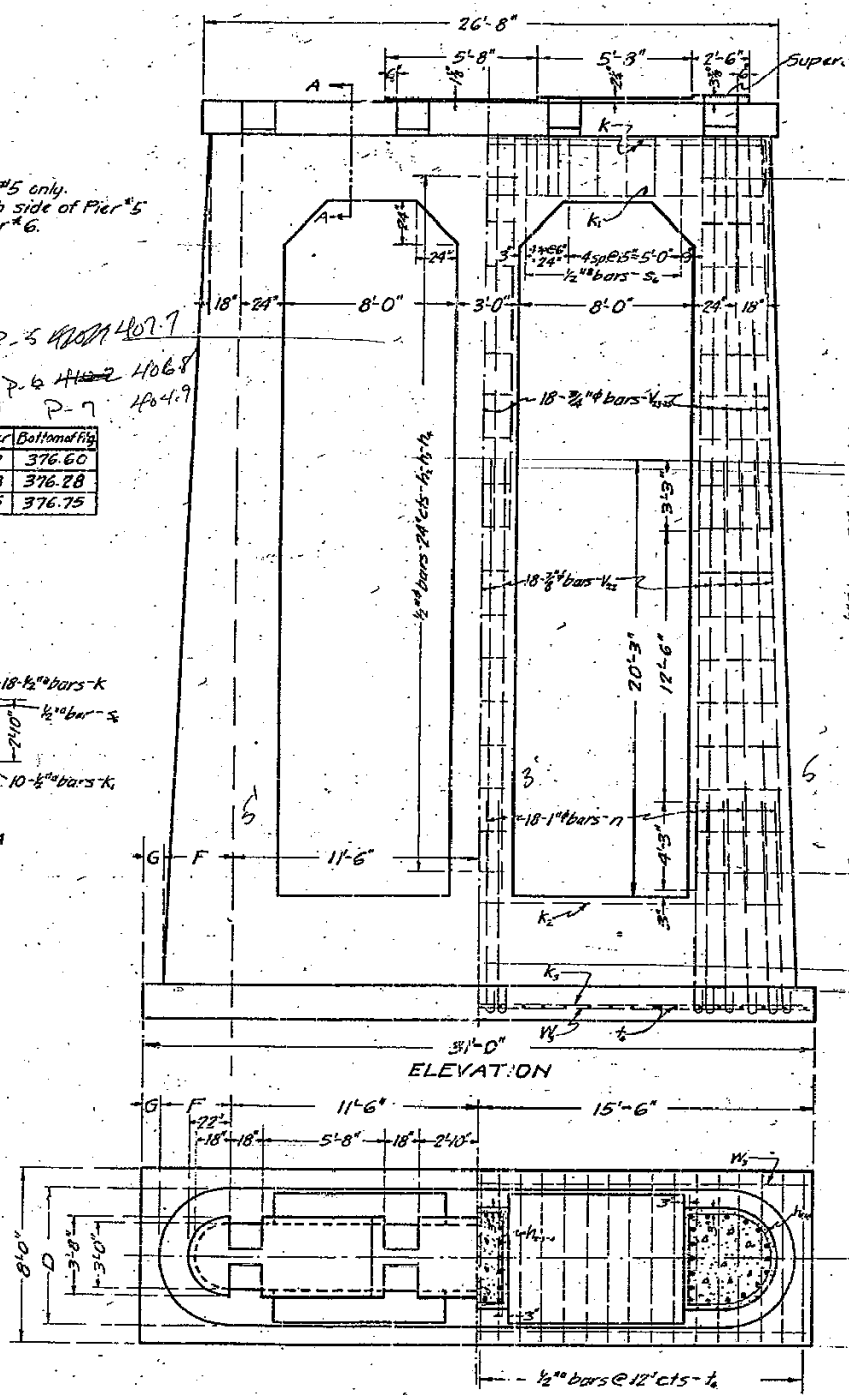
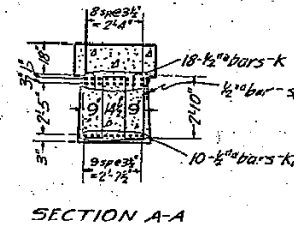
SHRIT NC  
15 SHEETS



Note:-  
Super-elevation on Pier #5 only.  
Omit pockets on North side of Pier #5  
Omit all pockets on Pier #6.

ELEVATIONS

	Cr. of Rdwy.	Top of Pier	Bottom of Pier
Pier #5	432.87	418.50	376.60
Pier #6	421.42	417.28	376.28
Pier #7	419.42	415.25	376.75



Super-elevation Blocks on Pier #5 only.  
Bottom of New CAP ELEV  
P-5 = 407.7  
P-6 = 406.8  
P-7 = 405.5

DIMENSIONS

	Pier 5	Pier 6	Pier 7
A	46'-3/4"	45'-1/2"	42'-8"
B	32'-0"	31'-0"	28'-6"
C	4'-3/4"	4'-1/2"	4'-2"
D	6'-3/4"	6'-2"	5'-11/8"
E	10"	11"	12"
F	3'-1/2"	3'-1"	2'-11/8"
G	10"	11"	12"
H	1/2"	3/8"	1/2"
I	1/8"	1/4"	1/8"

BILLS OF MATERIAL  
PIER 5

Bar	No.	Size	Length
K	18	1/2"	29'-0"
K1	10	"	26'-0"
K2	10	"	28'-0"
K3	11	"	30'-0"
V1	54	3/8"	20'-0"
V2	54	3/8"	18'-0"
N	54	1/2"	11'-0"
Z	31	1/2"	7'-9"
W	4	1/2"	16'-6"
H1	6	1/2"	13'-6"
H2	6	"	15'-6"
H3	5	"	17'-0"
H4	12	"	14'-0"
H5	12	"	16'-0"
H6	10	"	18'-6"
S	18	1/2"	17'-9"

Reinforcing Steel-Lbs. 7910  
Class X Conc.-Cu.Yds. 111.1

PIER 6

Bar	No.	Size	Length
K	18	1/2"	29'-0"
K1	10	"	26'-0"
K2	10	"	28'-0"
K3	11	"	30'-0"
V1	54	3/8"	20'-0"
V2	54	3/8"	18'-0"
N	54	1/2"	11'-0"
Z	31	1/2"	7'-9"
W	4	1/2"	16'-6"
H1	6	1/2"	13'-6"
H2	6	"	15'-6"
H3	5	"	17'-0"
H4	12	"	14'-0"
H5	12	"	16'-0"
H6	10	"	18'-6"
S	18	1/2"	17'-9"

Reinforcing Steel-Lbs. 7420  
Class X Conc.-Cu.Yds. 107.0

PIER 7

Bar	No.	Size	Length
K	18	1/2"	29'-0"
K1	10	"	26'-0"
K2	10	"	28'-0"
K3	11	"	30'-0"
V1	54	3/8"	20'-0"
V2	54	3/8"	18'-0"
N	54	1/2"	11'-0"
Z	31	1/2"	7'-9"
W	4	1/2"	16'-6"
H1	6	1/2"	13'-6"
H2	6	"	15'-6"
H3	5	"	17'-0"
H4	12	"	14'-0"
H5	12	"	16'-0"
H6	10	"	18'-6"
S	18	1/2"	17'-9"

Reinforcing Steel-Lbs. 7150  
Class X Conc.-Cu.Yds. 98.9

PLAN Column Heights

P-5 = 28.6  
P-6 = 28.02  
P-7 = 26.25

Use Class X Concrete throughout.  
All reinforcing steel shall be wired securely  
in place before pouring concrete.

PIERS 5, 6 & 7

BRIDGE OVER  
SANTA FE RAILROAD  
AND CROW CREEK  
S.B.I. RT. 89 SEC. 125V-B  
STA. 301+00

COMPUTED	- M. J. Pitzer
CHECKED	- E. J. Styles
DRAWN	- M. J. Pitzer
CHECKED	- E. J. Styles
ASSEMBLED	-
CHECKED	-

EXAMINED June 2, 1930  
BRIDGE ENGINEER  
PASSED  
ENGINEER OF DESIGN  
APPROVED Paul Sheets  
CHIEF HIGHWAY ENGINEER

FILE NAME =	USER NAME = jdeen	DESIGNED -	REVISED -
v:\transportation\3013\cadd\sheet\06220086-68580-106-EXISTING PLANS.dgn		DRAWN -	REVISED -
PLOT SCALE = 20.0000 / IN.		CHECKED -	REVISED -
PLOT DATE = 7/25/2013		DATE - JULY 24, 2013	REVISED -

STATE OF ILLINOIS  
DEPARTMENT OF TRANSPORTATION

EXISTING STRUCTURE PLANS  
FOR INFORMATION ONLY

SCALE: SHEET NO. 7 OF 27 SHEETS STA. TO STA.

F.A.P. RTE.	SECTION	COUNTY	TOTAL SHEETS	SHEET NO.
698	(125VBR)BR	MARSHALL	148	94
FED. ROAD DIST. NO. ILLINOIS FED. AID PROJECT			CONTRACT NO. 68580	