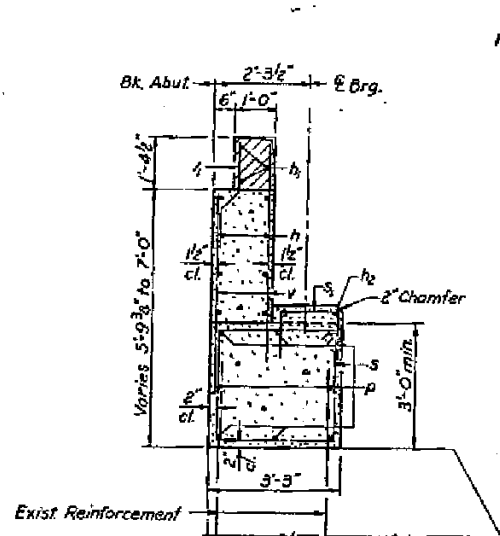
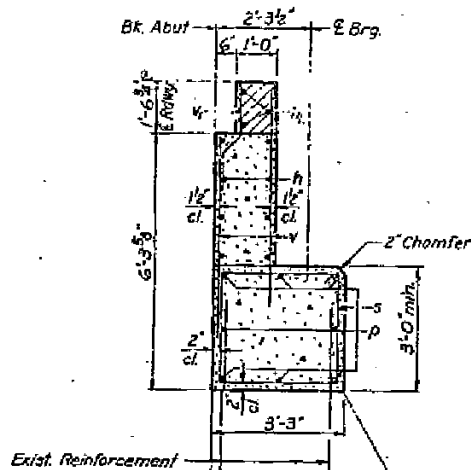


STATE OF ILLINOIS  
DEPARTMENT OF PUBLIC WORKS & BUILDINGS  
DIVISION OF HIGHWAYS

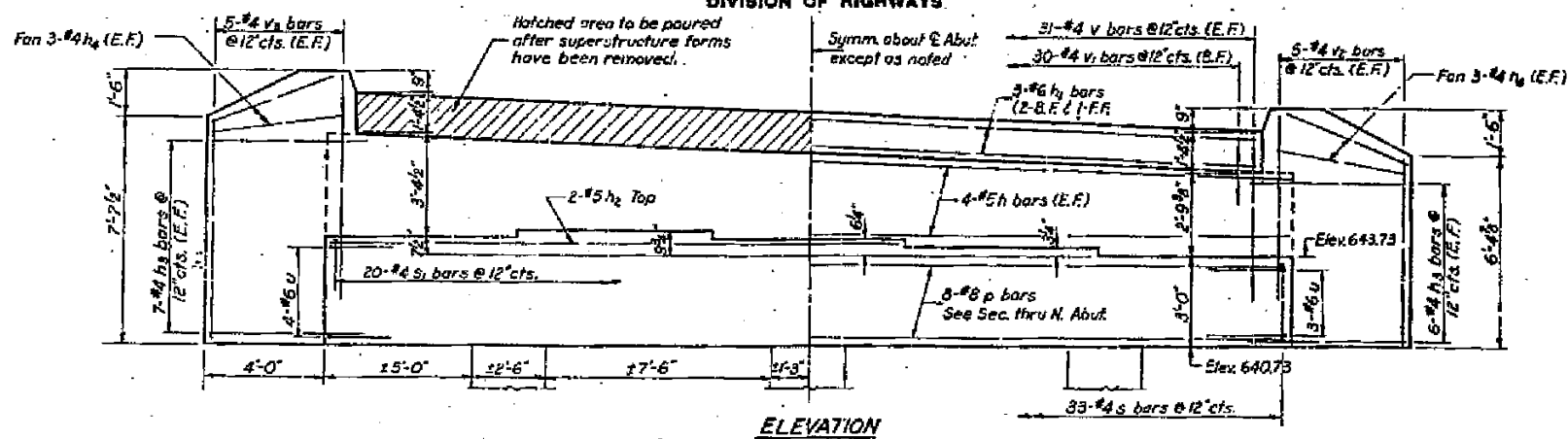
PROJECT NO.	125VBR	SHEET NO.	20	TOTAL SHEETS	27
COUNTY	MARSHALL	SECTION	41	STA.	295 + 98.76



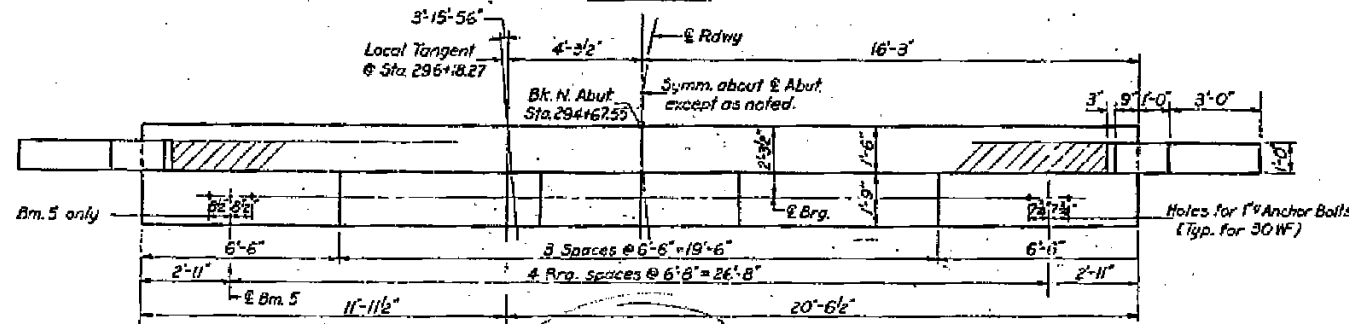
SEC. THRU NORTH ABUT.



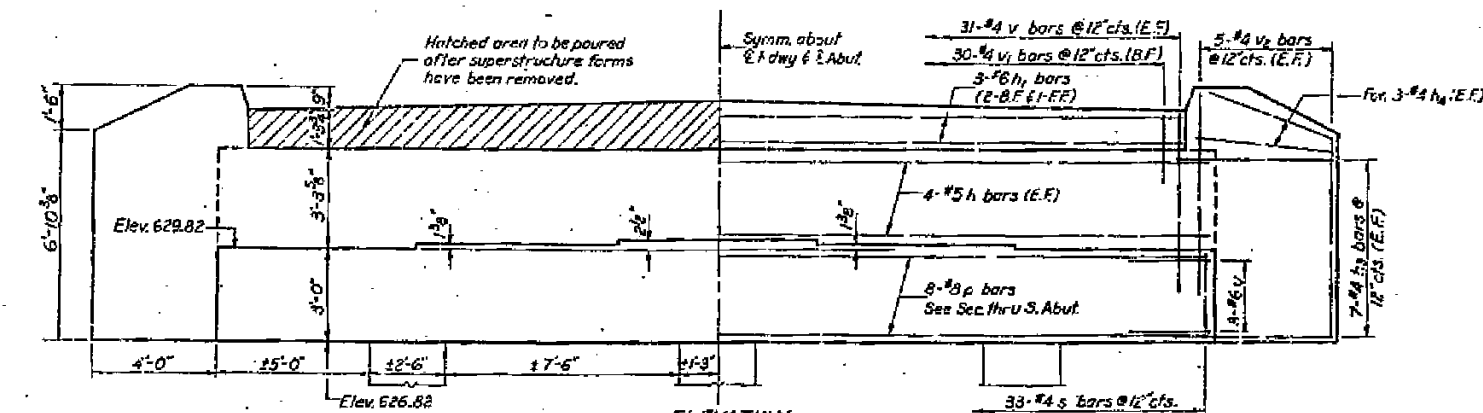
SEC. THRU SOUTH ABUT.



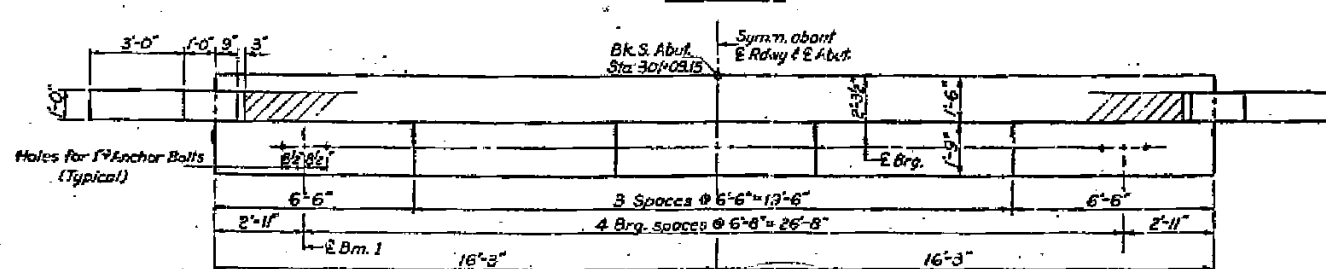
ELEVATION



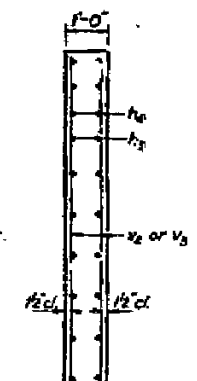
PLAN - NORTH ABUT.



ELEVATION

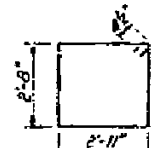


PLAN - SOUTH ABUT.

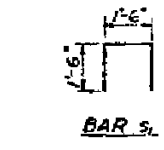


SEC. THRU WING WALL  
(Bend v<sub>2</sub> or v<sub>3</sub> bars in field to fit section if necessary.)

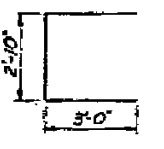
Remove the existing concrete from top of Abut. to the bottom of new cap. The existing vertical reinforcement which will be embedded in new concrete shall be cleaned and cut off 2'-6" above bottom of new cap. The other vertical reinforcement shall be cut off flush with bottom of new cap and covered with cement mortar.



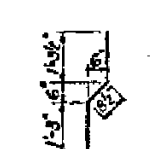
BAR S



BAR S



BAR U



BAR V

TWO ABUTS.  
BILL OF MATERIAL

Bar	No.	Size	Length	Usage
h	16	#4	32'-3"	
h <sub>1</sub>	6	#6	31'-3"	
h <sub>2</sub>	2	#5	19'-3"	
h <sub>3</sub>	54	#4	5'-3"	
h <sub>4</sub>	24	#4	4'-6"	
D	16	#8	32'-3"	
S	66	#4	11'-11"	
S <sub>1</sub>	20	#4	4'-6"	
U	13	#5	8'-10"	
V	124	#4	5'-6"	
v <sub>1</sub>	60	#4	3'-3"	
v <sub>2</sub>	30	#4	7'-6"	
v <sub>3</sub>	10	#4	6'-9"	
Class K Concrete		Cu. Yds.	41.7	
Reinforcement Bars		Lbs.	3150	
Concrete Removal		Cu. Yds.	17	

ABUTMENTS  
S.B.I. RT. 89 SEC. 125 VBR  
MARSHALL COUNTY  
STA. 295 + 98.76

DESIGNED	W. H. Hays	EXAMINED	J. L. Armstrong
CHECKED	Lynn Casco	PASSED	
DRAWN	J. L. Armstrong	APPROVED	
CHECKED	L.P.		

JUNE 3 1970