

F.A.I. RTE.	SECTION	COUNTY	TOTAL SHEETS	SHEET NO.
74	48-[(25B)BR, BR-1]	KNOX	131	1
ILLINOIS CONTRACT NO. 68B85				

\*131 + 3 = 134

D-94-027-14



LOCATION OF SECTION INDICATED THUS: —■—

STATE OF ILLINOIS  
DEPARTMENT OF TRANSPORTATION  
DIVISION OF HIGHWAYS

**PROPOSED  
HIGHWAY PLANS**

FAI 74 (I-74)  
AT HENDERSON CREEK  
SECTION 48-[(25B)BR, BR-1]  
PROJECT ACNHPP-0074 (306)  
BRIDGE REPLACEMENT  
KNOX COUNTY  
C-94-083-14

INDEX OF SHEETS

SHEET NUMBER	DESCRIPTION
1	TITLE SHEET
2	STATE STANDARDS, GENERAL NOTES AND COMMITMENTS
3 - 8	SUMMARY OF QUANTITIES
9	I-74 EASTBOUND EXISTING AND PROPOSED TYPICAL SECTION
10	I-74 WESTBOUND EXISTING AND PROPOSED TYPICAL SECTION
11	ALIGNMENT, TIES AND BENCHMARKS
12	I-74 EASTBOUND ROADWAY PLAN AND PROFILE
13	I-74 WESTBOUND ROADWAY PLAN AND PROFILE
14	SUGGESTED STAGES OF CONSTRUCTION AND TRAFFIC CONTROL NOTES
15	I-74 EASTBOUND EROSION & SEDIMENT CONTROL PLAN
16 - 17	I-74 WESTBOUND EROSION & SEDIMENT CONTROL PLAN
18	I-74 EASTBOUND DRAINAGE PLAN AND PROFILE
19	I-74 WESTBOUND DRAINAGE PLAN AND PROFILE
20	I-74 EASTBOUND PAVEMENT MARKING PLAN
21	I-74 WESTBOUND PAVEMENT MARKING AND SIGNING PLAN
22 - 71	STRUCTURE PLANS
72 - 77	IDOT DISTRICT 4 DETAILS
78 - 94	I-74 EASTBOUND CROSS SECTIONS
95 - 111	I-74 WESTBOUND CROSS SECTIONS
112 - 131	EXISTING PLANS

\* Added 72A, 72B, 72C

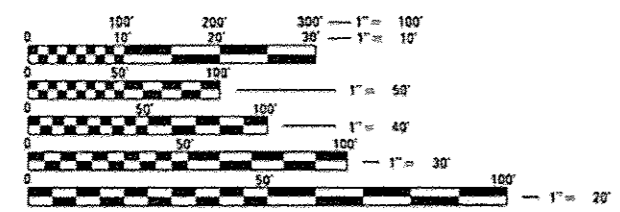
FOR IDOT HIGHWAY STANDARDS, SEE SHEET NO. 2

TRAFFIC DATA

FAI 74  
EXISTING TRAFFIC ADT: 13100 (2013)  
EXISTING TRUCK ADT: 4700 (2013)  
SPEED LIMIT: 70 MPH  
SINGLE UNIT: 650  
MULTI UNIT: 4050  
DESIGN DESIGNATION: INTERSTATE

PROJECT LOCATED IN RIO TOWNSHIP  
IN KNOX COUNTY

PROJECT DESCRIPTION:  
PROJECT INCLUDES REMOVAL AND REPLACEMENT OF SUPERSTRUCTURE AND  
SUBSTRUCTURE OF EXISTING BRIDGES, INTERSTATE ROUTE 74 OVER HENDERSON  
CREEK IN RIO TOWNSHIP, KNOX COUNTY.

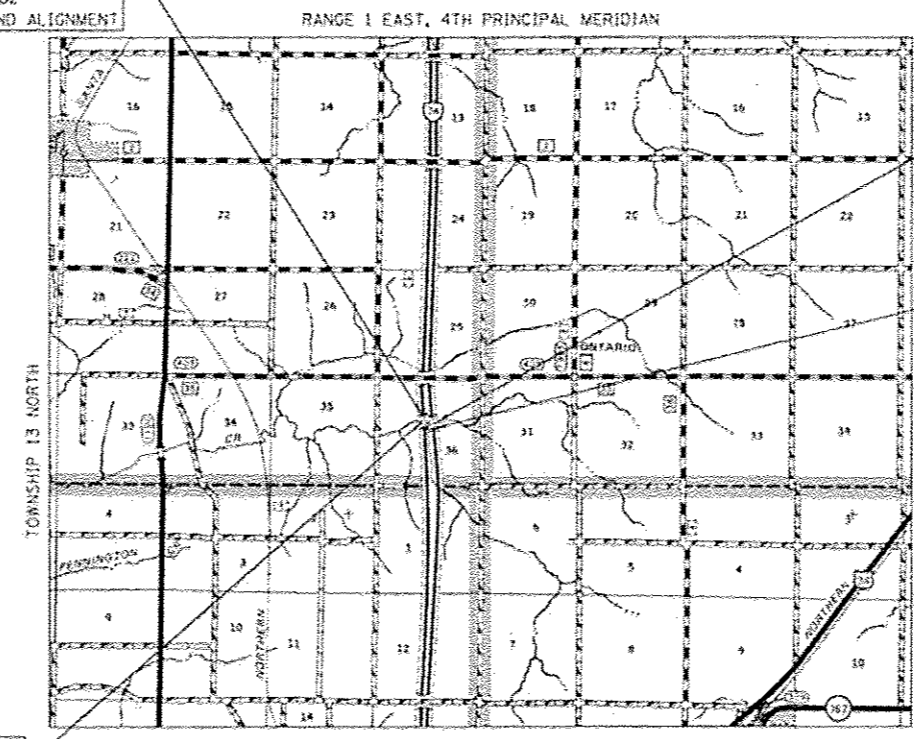


FULL SIZE PLANS HAVE BEEN PREPARED USING STANDARD  
ENGINEERING SCALES. REDUCED SIZED PLANS WILL NOT  
CONFORM TO STANDARD SCALES. IN MAKING MEASUREMENTS  
ON REDUCED PLANS, THE ABOVE SCALES MAY BE USED.

FOR UTILITY INFORMATION CONTACT  
J.U.L.I.E.  
JOINT UTILITY LOCATION INFORMATION FOR EXCAVATION  
1-800-892-0123

PROJECT MANAGER: MICHAEL LEWIS (309)671-3454  
PROJECT ENGINEER: MICHAEL MCLUCKIE (309)671-3468  
CATALOG NO. 032264-03D  
CONTRACT NO. 68B85

PROJECT BEGINS  
STA. 409+45.82  
ON EASTBOUND ALIGNMENT



STA. 416+04.00  
STRUCTURE NO. 048-0003  
REMOVE EXISTING 121.5'  
THREE SPAN STRUCTURE  
PROPOSED S.N. 048-0090  
SINGLE SPAN STRUCTURE

STA. 417+20.00  
STRUCTURE NO. 048-0004  
REMOVE EXISTING 115.0'  
THREE SPAN STRUCTURE  
PROPOSED S.N. 048-0091  
SINGLE SPAN STRUCTURE

PROJECT ENDS  
STA. 421+38.00  
ON WESTBOUND ALIGNMENT



Prakash K. Chatterjee 7/29/2014  
Expires: 11/30/2014



Greg Alan Schneider 7/30/2014  
Expires: 11/30/2014

GROSS LENGTH = 1192.8 FT. = 0.226 MILE  
NET LENGTH = 1192.8 FT. = 0.226 MILE

STATE OF ILLINOIS  
DEPARTMENT OF TRANSPORTATION  
DIVISION OF HIGHWAYS

SUBMITTED Aug 14 20 14  
Frensis A. Garnett  
DEPUTY DIRECTOR OF HIGHWAYS, REGION ENGINEER

Oct 17 20 14  
John D. Baranzelli, P.E.  
acting ENGINEER OF DESIGN AND ENVIRONMENT

Oct 17 20 14  
Omer Osman, P.E.  
DIRECTOR OF HIGHWAYS, CHIEF ENGINEER

PRINTED BY THE AUTHORITY  
OF THE STATE OF ILLINOIS



Rev. 11-12-14

**LIST OF STATE STANDARDS**

STANDARD NUMBER	DESCRIPTION
000001-06	STANDARD SYMBOLS, ABBREVIATIONS AND PATTERNS
001001-02	AREAS OF REINFORCEMENT BARS
001006	DECIMAL OF AN INCH AND OF A FOOT
280001-07	TEMPORARY EROSION CONTROL SYSTEMS
420001-07	PAVEMENT JOINTS
420401-10	BRIDGE APPROACH PAVEMENT CONNECTOR
421001-02	BAR REINFORCEMENT FOR CRC PAVEMENT
421101-09	24' (7.2 M) CRC PAVEMENT
515001-03	NAME PLATE FOR BRIDGES
542401-01	METAL END SECTION FOR PIPE CULVERTS
601101-01	CONCRETE HEADWALL FOR PIPE DRAIN
606001-05	CONCRETE CURB TYPE B AND COMBINATION CONCRETE CURB AND GUTTER
609006-05	BRIDGE APPROACH PAVEMENT (DRAIN DETAIL)
610001-06	SHOULDER INLET WITH CURB
630001-10	STEEL PLATE BEAM GUARDRAIL
630301-06	SHOULDER WIDENING FOR TYPE 1 (SPECIAL) GUARDRAIL TERMINALS
631011-09	TRAFFIC BARRIER TERMINAL, TYPE 2
631031-12	TRAFFIC BARRIER TERMINAL, TYPE 6
635001-01	DELINEATORS
635006-03	REFLECTOR AND TERMINAL MARKER PLACEMENT
635011-02	REFLECTOR MARKER AND MOUNTING DETAILS
665001-02	WOVEN WIRE FENCE
701101-04	OFF-RD OPERATIONS, MULTILANE, 15' (4.5 m) TO 24' (6 mm) FROM PAVEMENT EDGE
701106-02	OFF-RD OPERATIONS, MULTILANE, MORE THAN 15' (4.5 m) AWAY
701400-07	APPROACH TO LANE CLOSURE, FREEWAY/EXPRESSWAY
701401-08	LANE CLOSURE, FREEWAY/EXPRESSWAY
701402-09	LANE CLOSURE, FREEWAY/EXPRESSWAY, WITH BARRIER
701406-08	LANE CLOSURE, FREEWAY/EXPRESSWAY, DAY OPERATIONS ONLY
701426-06	LANE CLOSURE, MULTILANE, INTERMITTENT OR MOVING OPER., FOR SPEEDS >= 45 MPH
701428	TRAFFIC CONTROL SETUP AND REMOVAL FREEWAY/EXPRESSWAY
701901-03	TRAFFIC CONTROL DEVICES
704001-07	TEMPORARY CONCRETE BARRIER
720001-01	SIGN PANEL MOUNTING DETAILS
720006-04	SIGN PANEL ERECTION DETAILS
720011-01	METAL POSTS FOR SIGNS, MARKERS & DELINEATORS
780001-04	TYPICAL PAVEMENT MARKINGS

**LIST OF DISTRICT FOUR CADD STANDARDS \***

STANDARD NUMBER	DESCRIPTION
205001-D4	SLOPE STEPS DETAIL
406101-D4	BUTT JOINTS
601101-D4	SLOPE DRAIN DETAILS FOR BURIED PIPES
601301-D4	PIPE ELBOW
601401-D4	DETAILS OF SEEPAGE COLLARS FOR BURIED PIPES
630101-D4	GUARDRAIL EROSION CONTROL TREATMENTS

\* INCLUDED AS SHEETS 72-73C, 74-77

**GENERAL NOTES**

- MICROSTATION AND GEOPAK FILES OF THIS PROJECT WILL BE MADE AVAILABLE TO THE CONTRACTOR. IF THERE IS A CONFLICT BETWEEN THE ELECTRONIC FILES AND THE PRINTED AFTER CONTRACT AWARD PLANS AND DOCUMENTS, THE PRINTED CONTRACT PLANS AND DOCUMENTS SHALL TAKE PRECEDENCE OVER THE ELECTRONIC FILES. THE CONTRACTOR SHALL ACCEPT ALL RISK ASSOCIATED WITH USING THE ELECTRONIC FILES AND SHALL HOLD THE DEPARTMENT HARMLESS FOR ANY ERRORS OR OMISSIONS IN THE ELECTRONIC FILES AND THE DATA CONTAINED THEREIN. ERRORS OR DELAYS RESULTING FROM THE USE OF THE ELECTRONIC FILES BY THE CONTRACTOR SHALL NOT RESULT IN AN EXTENSION OF TIME FOR ANY INTERIM OR FINAL COMPLETION DATE OR SHALL NOT BE CONSIDERED CAUSE FOR ADDITIONAL COMPENSATION. THE CONTRACTOR SHALL NOT USE, SHARE, OR DISTRIBUTE THESE ELECTRONIC FILES EXCEPT FOR THE PURPOSE OF CONSTRUCTING THIS CONTRACT. ANY CLAIMS BY THIRD PARTIES DUE TO USE OR ERRORS SHALL BE THE SOLE RESPONSIBILITY OF THE CONTRACTOR. THE CONTRACTOR SHALL INCLUDE THIS DISCLAIMER WITH THE TRANSFER OF THESE ELECTRONIC FILES TO ANY OTHER PARTIES AND SHALL INCLUDE APPROPRIATE LANGUAGE BINDING THEM TO SIMILAR RESPONSIBILITIES.
- NOT USED
- ALL ELEVATIONS SHOWN ON THE PLANS ARE ESTABLISHED FROM U.S.G.S. MEAN SEA LEVEL DATUM.
- THE CONTRACTOR WILL SUBMIT TO THE ENGINEER A SATISFACTORY PROGRESS SCHEDULE AND CRITICAL PATH SCHEDULE WHICH SHALL SHOW THE PROPOSED SEQUENCE OF WORK AT THE TIME OF THE PRE-CONSTRUCTION CONFERENCE.
- AT LOCATIONS WHERE CLEARING IS INDICATED ON THE PLANS BEYOND THE LIMITS OF THE PROPOSED EXCAVATION OR EMBANKMENT, THE CONTRACTOR SHALL RESTORE THE DISTURBED EARTH BY BLADING AND SHAPING TO BLEND WITH THE ADJACENT GROUND. THE CLEARING WILL NOT BE PAID FOR SEPARATELY BUT SHALL BE INCLUDED IN THE COST OF THE EXCAVATION PAY ITEMS IN THE PLANS. PAYMENT FOR RESEEDING OR RESODDING WILL BE AS PROVIDED IN THE PLANS.
- EARTH EXCAVATION AND BACKFILL FOR THE PROPOSED CURB AND GUTTERS SHALL BE INCLUDED IN THE UNIT COST OF THE VARIOUS ITEMS.
- THE CONTRACTOR SHALL CONSULT WITH THE ENGINEER IN REGARD TO THE EXACT LENGTH OF THE PIPE DRAINS REQUIRED PRIOR TO ORDERING THESE ITEMS.
- IN ACCORDANCE WITH SECTION 602 OF THE STANDARD SPECIFICATIONS, THE CONNECTING OF EXISTING DRAIN TILES, PIPE CULVERTS, OR STORM SEWERS TO THE PROPOSED DRAINAGE SYSTEM STRUCTURES WILL NOT BE PAID FOR SEPARATELY BUT SHALL BE CONSIDERED AS INCLUDED IN THE PAY ITEMS PROVIDED.
- TEN FEET (10 FT.) (3 M) TRANSITIONS SHALL BE USED TO MATCH PROPOSED ITEMS OF WORK TO EXISTING ITEMS IN THE FIELD UNLESS OTHERWISE SHOWN. THE TRANSITION SHALL BE PAID FOR AT THE CONTRACT UNIT PRICE FOR THE PROPOSED ITEM OF WORK SPECIFIED.
- THE WOVEN WIRE FENCE SHALL BE INSTALLED PRIOR TO THE REMOVAL OF THE EXISTING FARM FENCES. THE CONTRACTOR SHALL PROVIDE A PULL POST AT THE INTERSECTION OF NEW AND EXISTING FENCES. WHEN SO DIRECTED BY THE ENGINEER, THE CONTRACTOR SHALL INSTALL THE WOVEN WIRE FENCE PRIOR TO COMMENCING ANY OTHER WORK IN THE AREA. THE CONTRACTOR SHALL PERFORM ANY CLEARING AND MINOR GRADING AS DIRECTED BY THE ENGINEER TO PROVIDE A SMOOTH GROUND SURFACE FOR THE PROPOSED FENCE.
- ADD THE FOLLOWING SENTENCE TO THE END OF PARAGRAPH 670.02 (I) AND 670.04 (e):  
ALL OF THE TELEPHONE LINES PROVIDED SHALL HAVE UNPUBLISHED NUMBERS.
- SIGN LOCATIONS MAY VARY FROM THE STATIONS SHOWN ON THE PLANS IN ACCORDANCE WITH DIRECTIONS FROM THE ENGINEER AT THE TIME OF CONSTRUCTION. SIGN LOCATIONS MAY BE ADJUSTED IN THE FIELD TO AVOID ANY FOUND UTILITIES.  
ALL WOOD POST LOCATIONS SHALL BE VERIFIED WITH THE BUREAU OF OPERATIONS, TRAFFIC SECTION, BEFORE INSTALLATION.
- NOT USED
- NOT USED

15. ALL WORK NECESSARY FOR THE PLACEMENT OF RIP RAP INCLUDING EXCAVATION AND DEWATERING SHALL BE INCLUDED IN THE COST OF THE RIP RAP. REMOVAL AND DISPOSAL OF REGULATED SUBSTANCES WILL BE PAID SEPARATELY.

16. SLOPE STABILIZATION REQUIRING DROP OFFS GREATER THAN 2 FEET SHALL BE COMPLETED IN LESS THAN 24 HOURS.

**COMMITMENTS**

NONE

**MIXTURES TABLE**


	POLYMER SURFACE 1/2"	FLEXIBLE PAVEMENT CONNECTOR	HMA SHOULDERS (1/2" SURFACE LIFT)	HMA SHOULDERS (LOWER LIFTS)
PG GRADE	SBS OR SBR 76-22	64-22	64-22	64-22
MAX % RAP ALLOWABLE **	10%	15%	15%	25%
DESIGN AIR Voids	4.0% @ N=70	4.0% @ N=70	4.0% @ N=50	4.0% @ N=50
MIXTURE COMPOSITION	IL 9.5	IL 9.5	IL 9.5	IL 19.0
FRICTION AGGREGATE	MIX E	N.A.	MIX C	N.A.
QUALITY MANAGEMENT PROGRAM	OC OA	OC OA	OC OA	OC OA

\* MATERIAL SHALL BE COMPACTED TO 93.0-97.4 PERCENT OF THE MAXIMUM THEORETICAL DENSITY, EXCEPT THAT WHEN PLACED AS FIRST LIFT ON AN UNIMPROVED SUBGRADE, THE MINIMUM PERCENT COMPACTION SHALL BE 92.0 PERCENT. THE MAXIMUM THEORETICAL DENSITY SHALL BE DETERMINED FROM THE MOVING AVERAGE AS SPECIFIED IN THE OC/OA SPECIFICATION.

\*\* WHEN MORE THAN 20 PERCENT RAP IS USED, A SOFTER ASPHALT BINDER (PG58-22) MAY BE REQUIRED AS DETERMINED BY THE ENGINEER.

\*\*\* THE USE OF A MATERIAL TRANSFER DEVICE WILL NOT BE ALLOWED.

*Rev. Sheet 11-12-14*

FILE NAME =	DESIGNED - JCP	REVISED -	 <p>SEPSTEIN 105 WEST FULTON STREET CHICAGO, ILLINOIS 60651-1228 TEL 312 294 4100 FAX 312 596 1217 WWW.SEPSTEIN.COM</p>	<p>STATE OF ILLINOIS DEPARTMENT OF TRANSPORTATION</p>	<p>STATE STANDARDS, GENERAL NOTES AND COMMITMENTS</p>	F.A.J. RTE.	SECTION	COUNTY	TOTAL SHEETS	SHEET NO.
...YD4-174-HendersonCreek-Combined-sh1002-10-DRAWN	- JCP	REVISED -				74	4B-((25D)BR, BR-1)	KNOX	131	2
PLOT TIME = 11/19/2014	CHECKED - GAO	REVISED -				CONTRACT NO. 68B85				
PLOT DATE = 11/18/2014	DATE - 08/01/14	REVISED -				SCALE: N.T.S.	SHEET NO. 1 OF 1 SHEETS	STA. TO STA.	ILLINOIS FED. AID PROJECT	

CODE NO.	ITEM	UNIT	TOTAL QUANTITY	CONSTRUCTION CODE					
				90% FED 10% STATE ROADWAY	90% FED 10% STATE BRIDGE	90% FED 10% STATE BRIDGE	90% FED 10% STATE TRAINEES	100% STATE ROADWAY	
				0004	0011	0011	0042	0004	
				RURAL	048-0090	048-0091	RURAL	RURAL	
28000315	AGGREGATE DITCH CHECKS	TON	23	23					
28000400	PERIMETER EROSION BARRIER	FOOT	2147	2147					
28000500	INLET AND PIPE PROTECTION	EACH	17	17					
28100105	STONE RIPRAP, CLASS A3	SO YD	50	50					
28100107	STONE RIPRAP, CLASS A4	SO YD	3333		1673	1660			
28200200	FILTER FABRIC	SO YD	3463	130	1673	1660			
⚠ 40600275	<i>BITUMINOUS MATERIALS (PRIME COAT)</i>	<i>POUND</i>	<i>8080</i>	<i>8080</i>					
31101200	SUBBASE GRANULAR MATERIAL, TYPE B 4"	SO YD	657	657					
⚠ 40600285	<i>POLYMERIZED BITUMINOUS MATERIALS (PRIME COAT)</i>	<i>POUND</i>	<i>530</i>	<i>530</i>					
42001300	PROTECTIVE COAT	SO YD	647	647					
⚠ 40600982	<i>HOT-MIX ASPHALT SURFACE REMOVAL - BUTT JOINT</i>	<i>SQ YD</i>	<i>534</i>	<i>534</i>					
⚠ 42001430	<i>BRIDGE APPROACH PAVEMENT CONNECTOR (FLEXIBLE)</i>	<i>SO YD</i>	<i>647</i>	<i>647</i>					
⚠ 40603565	<i>POLYMERIZED HOT-MIX ASPHALT SURFACE COURSE, MIX "E", N70</i>	<i>TON</i>	<i>100</i>	<i>100</i>					
44000100	PAVEMENT REMOVAL	SO YD	623	623					
⚠ 44000184	<i>HOT-MIX ASPHALT SURFACE REMOVAL, 8 1/2"</i>	<i>SQ YD</i>	<i>2057</i>	<i>2057</i>					
44000500	COMBINATION CURB AND GUTTER REMOVAL	FOOT	117	117					
⚠ 48203031	<i>HOT-MIX ASPHALT SHOULDERS, 8 1/2"</i>	<i>SQ YD</i>	<i>2057</i>	<i>2057</i>					
50100100	REMOVAL OF EXISTING STRUCTURES	EACH	2		1	1			
50200100	STRUCTURE EXCAVATION	CU YD	1582		804	778			
50300225	CONCRETE STRUCTURES	CU YD	170.2		84.2	86.0			

20  
 \* DENOTES SPECIALTY ITEM

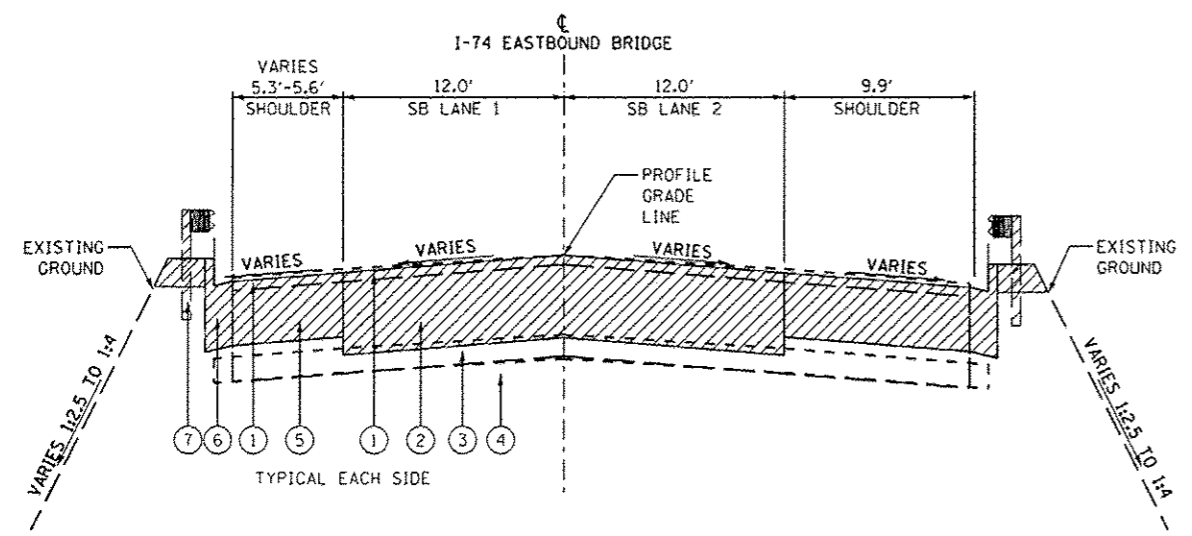
⚠ Rev. 11-12-14

FILE NAME : ...104-174-HendersonCreek-Combined-sh1804-5000	DESIGNED - JCP	REVISED - -	 <small>SEPSTEIN ENGINEERING &amp; ARCHITECTURE</small>	<b>STATE OF ILLINOIS</b> <b>DEPARTMENT OF TRANSPORTATION</b>	<b>SUMMARY OF QUANTITIES</b>			F.A.I. RTE.	SECTION	COUNTY	TOTAL SHEETS	SHEET NO.
PLOT TIME * 11:55:50 PM	CHECKED - GAO	REVISED - -						74	48-[[25B]BR, BR-1]	KNOX	131	4
PLOT DATE * 8/12/2014	DATE - 08/01/14	REVISED - -			SCALE: N/A	SHEET NO. 2 OF 6 SHEETS	STA.	TO STA.	ILLINOIS FED. AID PROJECT		CONTRACT NO. 68865	

CODE NO.	ITEM	UNIT	TOTAL QUANTITY	CONSTRUCTION CODE						
				90% FED 10% STATE ROADWAY	90% FED 10% STATE BRIDGE	90% FED 10% STATE BRIDGE	90% FED 10% STATE TRAINEES	100% STATE ROADWAY		
				0004	0011	0011	0042	0004		
				RURAL	048-0090	048-0091	RURAL	RURAL		
60603800	COMBINATION CONCRETE CURB AND GUTTER, TYPE B-6.12	FOOT	190	190						
60900515	CONCRETE THRUST BLOCKS	EACH	8	8						
61000225	TYPE F INLET BOX, STANDARD 610001	EACH	4	4						
61000335	TYPE G INLET BOX, STANDARD 610001	EACH	4	4						
63000003	STEEL PLATE BEAM GUARDRAIL, TYPE A, 9 FOOT POSTS	FOOT	1437.5	1437.5						
63100045	TRAFFIC BARRIER TERMINAL, TYPE 2	EACH	4	4						
63100085	TRAFFIC BARRIER TERMINAL, TYPE 6	EACH	8	8						
63100167	TRAFFIC BARRIER TERMINAL, TYPE 1 (SPECIAL) TANGENT	EACH	4	4						
63200310	GUARDRAIL REMOVAL	FOOT	1992	1992						
66500105	WOVEN WIRE FENCE, 4'	FOOT	227	227						
66700205	PERMANENT SURVEY MARKERS, TYPE 1	EACH	2	2						
67000400	ENGINEER'S FIELD OFFICE, TYPE A	CAL MO	7	7						
67100100	MOBILIZATION	L SUM	1	1						
70100205	TRAFFIC CONTROL AND PROTECTION, STANDARD 701401	EACH	2	2						
70100207	TRAFFIC CONTROL AND PROTECTION, STANDARD 701402	EACH	2	2						

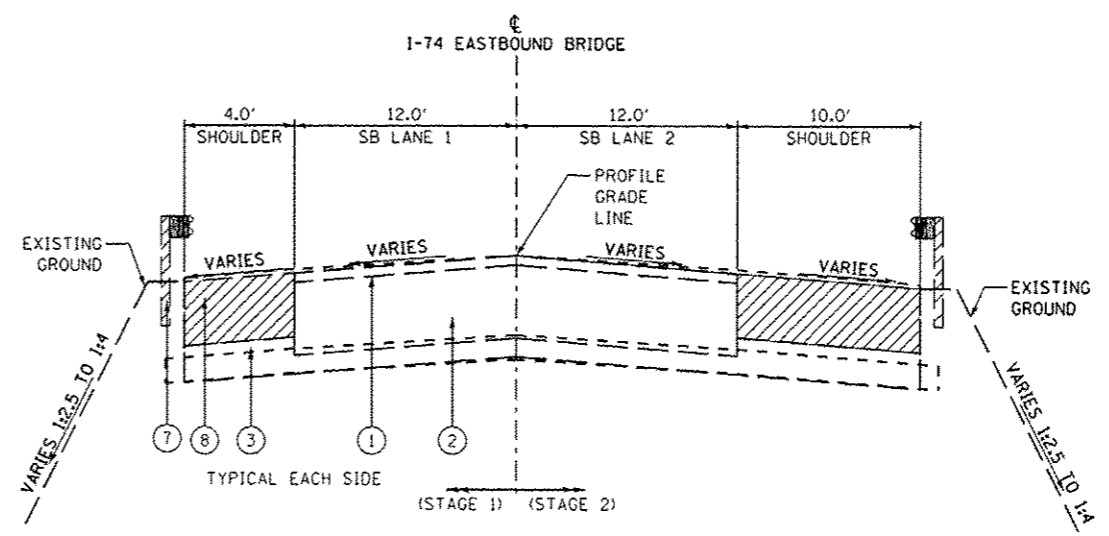
\* DENOTES SPECIALTY ITEM

Rev. 11-12-14



**EXISTING TYPICAL SECTION**

STA. 415+00.00 TO STA. 415+43.50  
 STA. 416+65.00 TO STA. 417+08.96  
 (BRIDGE OMISSION STA. 415+43.50 TO STA. 416+65.00)



**EXISTING TYPICAL SECTION**

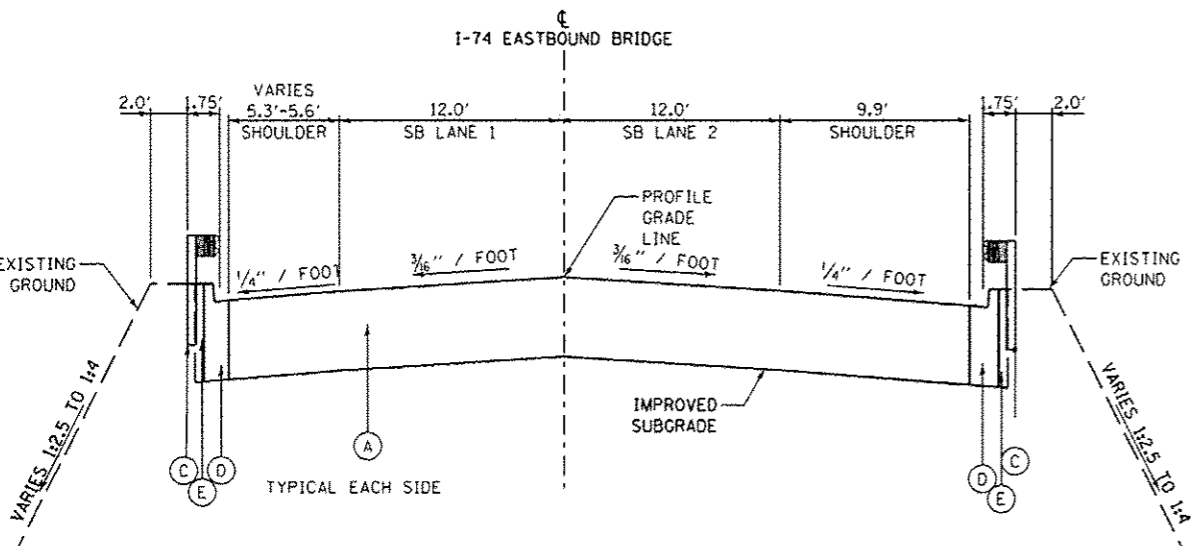
(STAGE 1)  
 STA. 412+36.00 TO STA. 415+00.00  
 STA. 417+08.96 TO STA. 418+96.00  
 (STAGE 2)  
 STA. 410+75.00 TO STA. 415+50.25  
 STA. 416+57.75 TO STA. 420+58.96

**EXISTING LEGEND:**

- ① 1/2" ASPHALT SURFACE
- ② PCC PAVEMENT
- ③ VARIABLE SUBBASE GRANULAR MATERIAL
- ④ SUBGRADE
- ⑤ BITUMINOUS AGGREGATE SHOULDER
- ⑥ TYPE B-6.12 CURB AND GUTTER
- ⑦ GUARDRAIL
- ⑧ HOT-MIX ASPHALT SURFACE REMOVAL, 8 1/2"
- ▨ ROADWAY REMOVAL ITEM (SEE ROADWAY PLANS)
- ▩ STRUCTURE REMOVAL ITEM (SEE STRUCTURE PLANS)

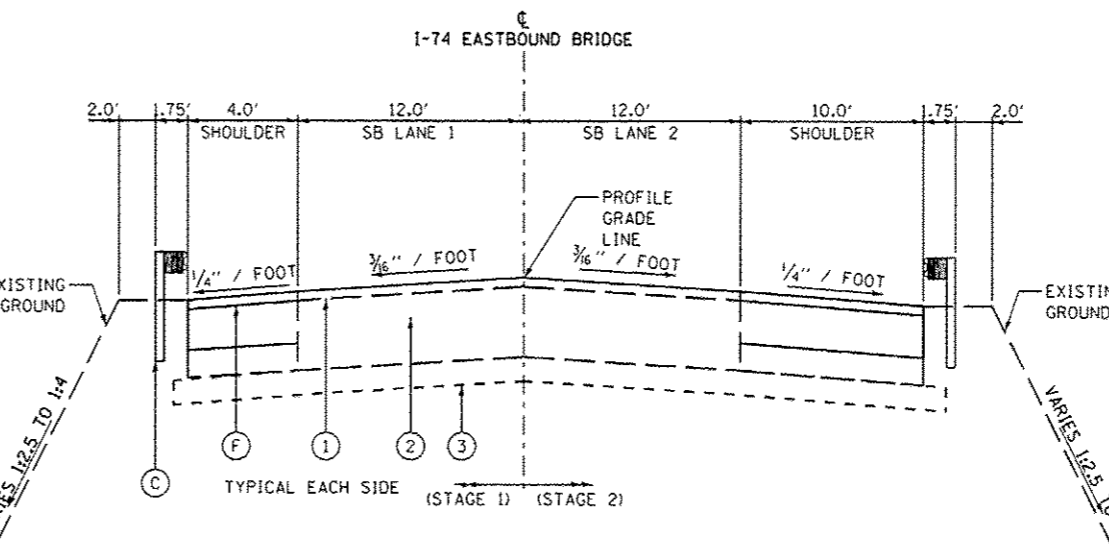
**NOTES:**

1. TYPE B6.12 CURB AND GUTTER REMOVAL FROM STA. 415+26.40 LT TO STA. 415+42.82 LT FROM STA. 415+29.89 RT TO STA. 415+43.43 RT FROM STA. 416+62.16 LT TO STA. 416+77.04 LT FROM STA. 416+61.86 RT TO STA. 416+75.72 RT
2. SEE DISTRICT 4 SLOPE STEPS DETAIL FOR ADDITIONAL INFORMATION.



**PROPOSED TYPICAL SECTION**

STA. 415+00.00 TO STA. 415+21.25  
 STA. 416+86.75 TO STA. 417+08.96  
 (BRIDGE OMISSION STA. 415+50.25 TO STA. 416+57.75)



**PROPOSED TYPICAL SECTION**

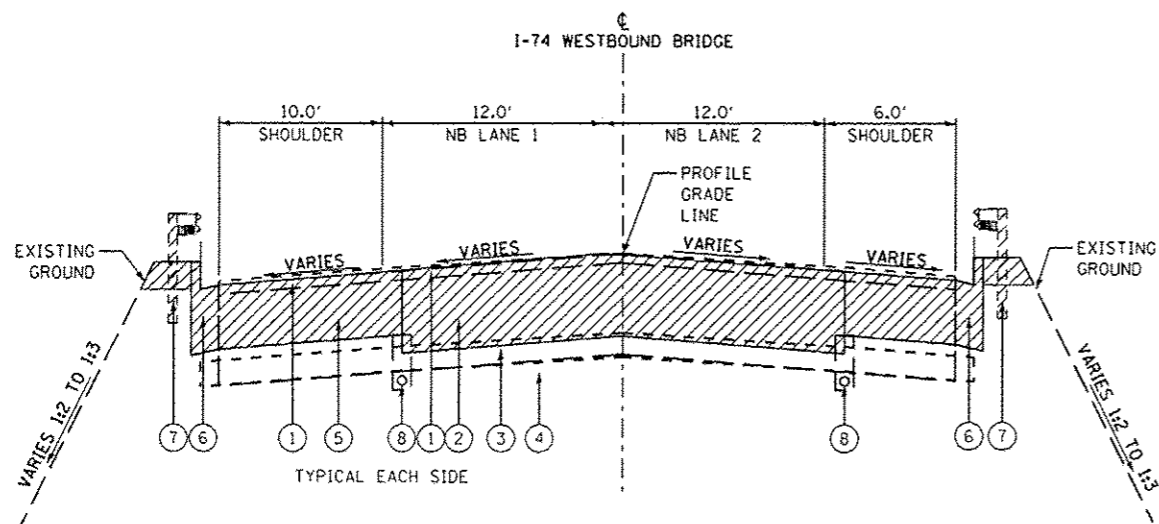
(STAGE 1)  
 STA. 412+36.00 TO STA. 415+00.00  
 STA. 417+08.96 TO STA. 418+96.00  
 (STAGE 2)  
 STA. 410+75.00 TO STA. 415+50.25  
 STA. 416+57.75 TO STA. 420+58.96

**PROPOSED LEGEND:**

- Ⓐ BRIDGE APPROACH PAVEMENT CONNECTOR (FLEXIBLE)
- Ⓑ NOT USED
- Ⓒ STEEL PLATE BEAM GUARDRAIL, TYPE A, 9 FOOT POSTS
- Ⓓ COMBINATION CONCRETE CURB AND GUTTER, TYPE B-6.12
- Ⓔ FURNISHED EXCAVATION
- Ⓕ HOT-MIX ASPHALT SHOULDERS, 8 1/2"

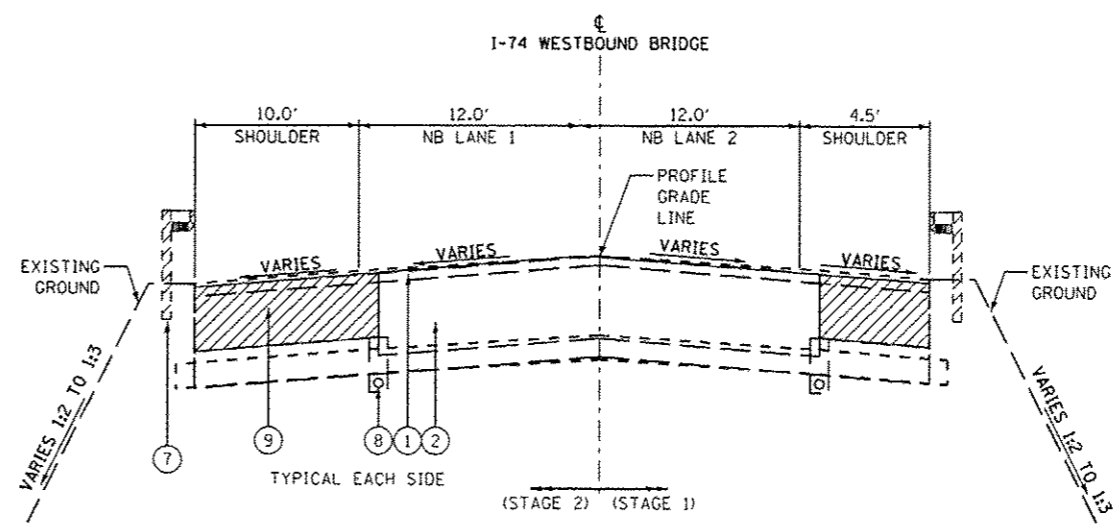
Rev. Sheet 11-12-14

FILE NAME : ...D4-174-HendersonCreek-Combined-sh1809-EG	DESIGNED - JCP	REVISED -	<p>SEPSTEIN        800 WEST FALCON STREET        CHICAGO, ILLINOIS 60611-1228        TEL 312 434 9300        FAX 312 538 1217        WEB www.sepstein.com</p>	<p>STATE OF ILLINOIS          DEPARTMENT OF TRANSPORTATION</p>		<p>I-74 EASTBOUND          EXISTING AND PROPOSED TYPICAL SECTION</p>		F.A.I. RTE. 74	SECTION 4B-1(25)BR, BR-1J	COUNTY KNOX	TOTAL SHEETS 131	SHEET NO. 9				
PLOT TIME : 2:07:09 PM	CHECKED - GAO	REVISED -						SCALE: N/A	SHEET NO. 1 OF 1 SHEETS	STA. N/A	TO STA. N/A	CONTRACT NO. 68B85				
PLOT DATE : 3/17/2014	DATE - \$RDATE	REVISED -														
									ILLINOIS FED. AID PROJECT							



**EXISTING TYPICAL SECTION**

STA. 415+69.56 TO STA. 416+62.52  
 STA. 417+77.54 TO STA. 418+24.56  
 (BRIDGE OMISSION STA. 416+62.52 TO STA. 417+77.54)



**EXISTING TYPICAL SECTION**

(STAGE 1)  
 STA. 413+94.56 TO STA. 415+69.56  
 STA. 418+24.56 TO STA. 420+13.08  
 (STAGE 2)  
 STA. 412+79.06 TO STA. 416+68.14  
 STA. 417+71.86 TO STA. 421+38.00

**EXISTING LEGEND:**

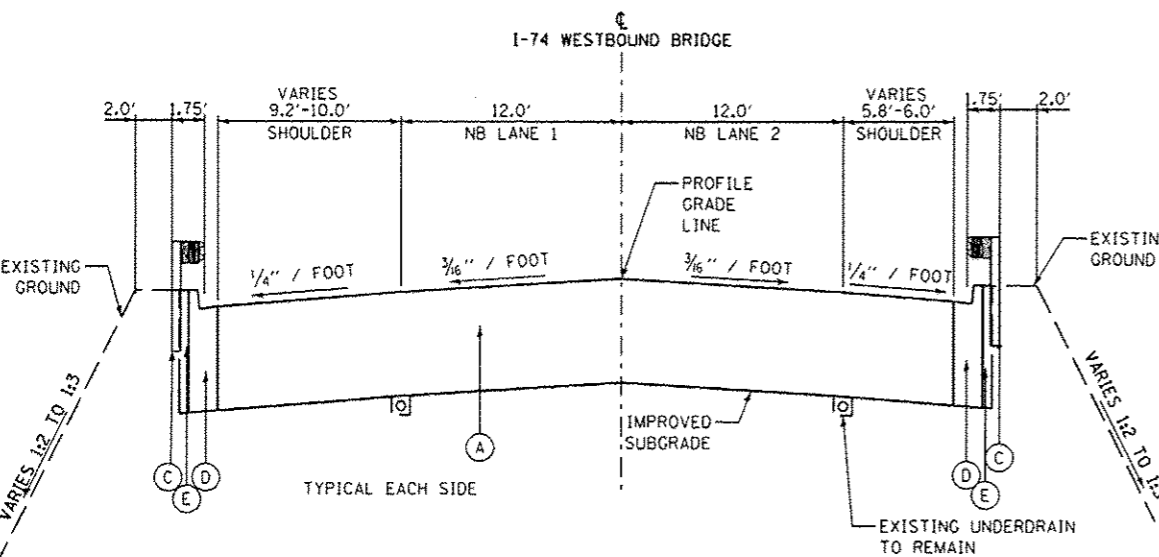
- ① 1/2" ASPHALT SURFACE
- ② PCC PAVEMENT
- ③ VARIABLE SUBBASE GRANULAR MATERIAL
- ④ SUBGRADE
- ⑤ BITUMINOUS AGGREGATE SHOULDER
- ⑥ TYPE B6.12 CURB AND GUTTER
- ⑦ GUARDRAIL
- ⑧ UNDERDRAIN
- ⑨ HOT-MIX ASPHALT SURFACE REMOVAL, 8 1/2"
- ▨ ROADWAY REMOVAL ITEM (SEE ROADWAY PLANS)
- ▩ STRUCTURE REMOVAL ITEM (SEE STRUCTURE PLANS)

**NOTES:**

1. TYPE B6.12 CURB AND GUTTER REMOVAL FROM STA. 415+26.40 LT TO STA. 415+42.82 LT FROM STA. 415+29.89 RT TO STA. 415+43.43 RT
2. SEE DISTRICT 4 SLOPE STEPS DETAIL FOR ADDITIONAL INFORMATION.

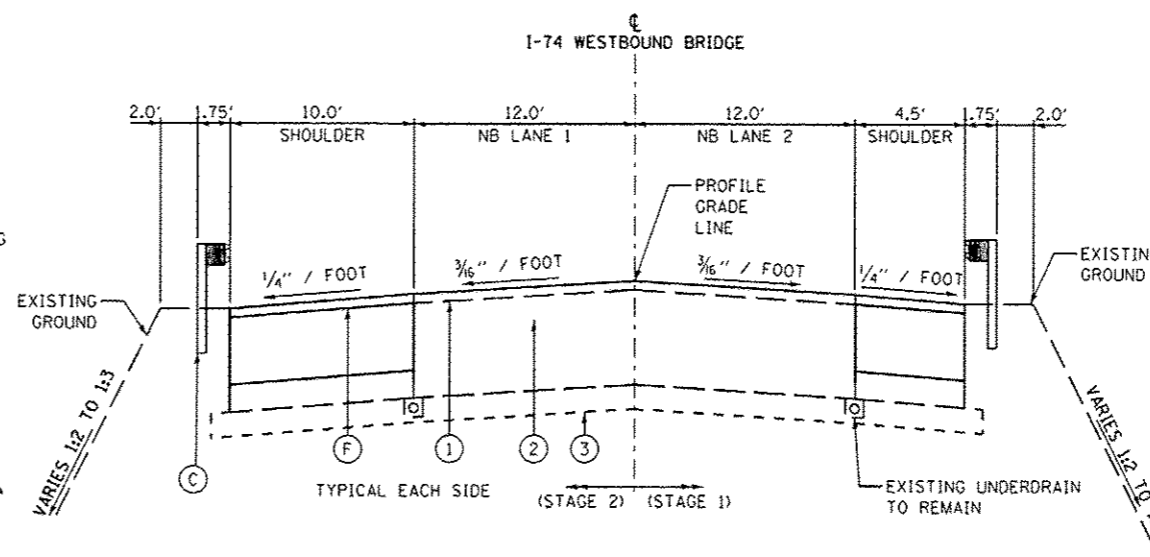
**PROPOSED LEGEND:**

- Ⓐ BRIDGE APPROACH PAVEMENT CONNECTOR (FLEXIBLE)
- Ⓑ NOT USED
- Ⓒ STEEL PLATE BEAM GUARDRAIL, TYPE A, 9 FOOT POSTS
- Ⓓ COMBINATION CONCRETE CURB AND GUTTER, TYPE B-6.12
- Ⓔ FURNISHED EXCAVATION
- Ⓕ HOT-MIX ASPHALT SHOULDERS, 8 1/2"



**PROPOSED TYPICAL SECTION**

STA. 415+69.56 TO STA. 416+39.18  
 STA. 418+00.81 TO STA. 418+24.56  
 (BRIDGE OMISSION STA. 416+68.14 TO STA. 417+71.86)

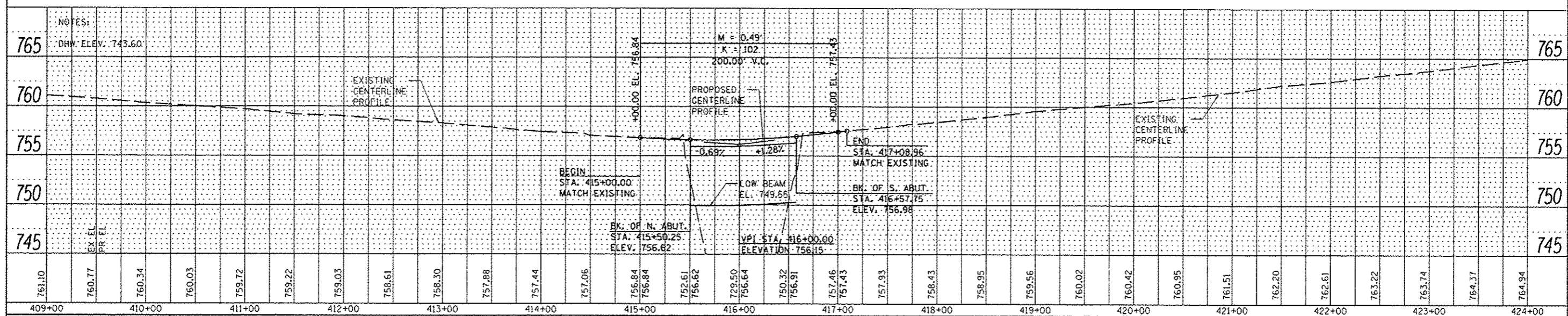
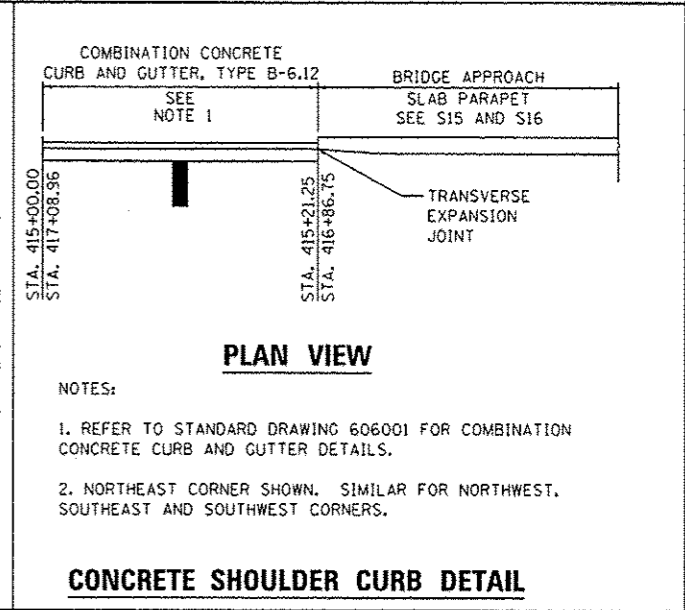
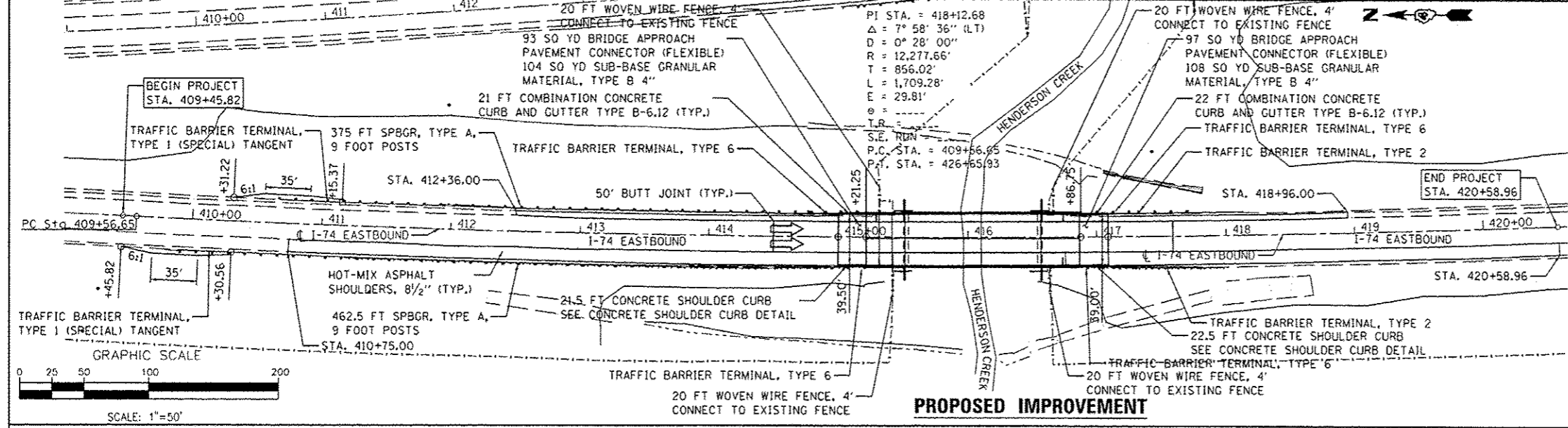
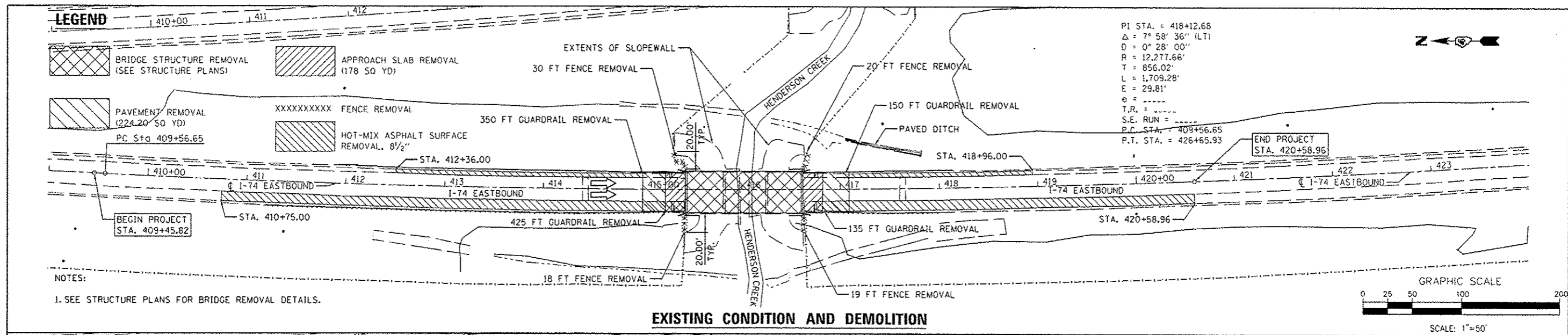


**PROPOSED TYPICAL SECTION**

(STAGE 1)  
 STA. 413+94.56 TO STA. 415+69.56  
 STA. 418+24.56 TO STA. 420+13.08  
 (STAGE 2)  
 STA. 412+79.06 TO STA. 416+68.14  
 STA. 417+71.86 TO STA. 421+38.00

Rev. Sheet 11-12-14

FILE NAME: ...D4-174-HendersonCreek-Combined-sh1818-W...	DESIGNED - JCP	REVISED -	 401 WEST FULLY STREET CHICAGO, ILLINOIS 60611-3716 TEL: 312 474 9100 FAX: 312 455 1117 WEB: www.sepstein.com	<b>STATE OF ILLINOIS</b> <b>DEPARTMENT OF TRANSPORTATION</b>	<b>I-74 WESTBOUND</b> <b>EXISTING AND PROPOSED TYPICAL SECTION</b>		F.A.I. R.T.E.	SECTION	COUNTY	TOTAL SHEETS	SHEET NO.
PLOT TIME: 11/10/2014 10:15 AM	CHECKED - GAO	REVISED -					74	48-(125B)DR, DR-1)	KNOX	131	10
PLOT DATE: 11/10/2014	DATE: 08/01/14	REVISED -			SCALE: N/A	SHEET NO. 1 OF 1 SHEETS	STA. N/A	TO STA. N/A	CONTRACT NO. 68885		



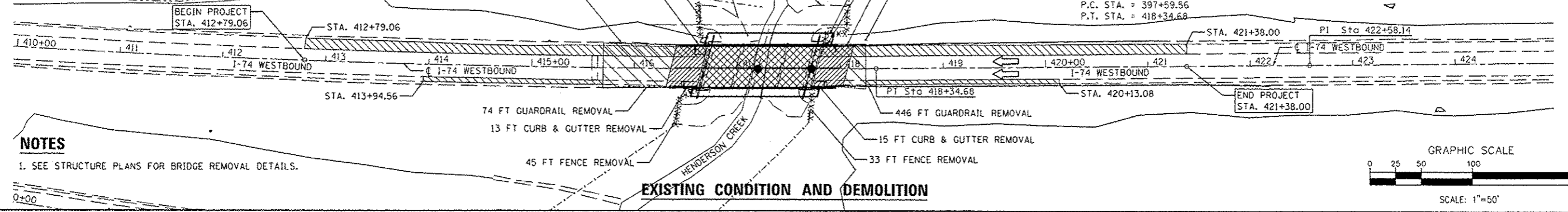
FILE NAME = ...ND4-174-HendersonCreek-Combined-sh1812-66p	DESIGNED - JCP	REVISED -	 400 WEST PLYMOUTH STREET CHICAGO, ILLINOIS 60601-1248 TEL 312 474 8100 FAX 312 655 1217 WWW.SEPSTEIN.COM	<b>STATE OF ILLINOIS</b> <b>DEPARTMENT OF TRANSPORTATION</b>	<b>I-74 EASTBOUND</b> <b>ROADWAY PLAN AND PROFILE</b>		F.A.T. RTE. 74	SECTION 4B-(125)BR, BR-11	COUNTY KNOX	TOTAL SHEETS 131	SHEET NO. 12	
PLOT TIME = 10/28/24 AM	CHECKED - GAO	REVISED -			SCALE: 1" = 50'	SHEET NO. 1 OF 1 SHEETS	STA. 409+00.00 TO STA. 424+00.00	CONTRACT NO. 68885				
PLOT DATE = 11/18/2014	DATE - 08/01/14	REVISED -			ILLINOIS FED. AID PROJECT							

Rev. Sheet 11-12-14

**LEGEND**

- APPROACH SLAB REMOVAL (280 SQ YD)
- HOT-MIX ASPHALT SURFACE REMOVAL, 8 1/2"
- PAVEMENT REMOVAL (399 SQ YD)
- BRIDGE STRUCTURE REMOVAL (SEE STRUCTURE PLANS)
- FENCE REMOVAL

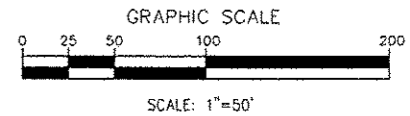
EXIST. CURVE WBC01  
 PI STA. = 407+99.60  
 $\Delta = 9^\circ 41' 02''$  (LT)  
 $D = 0^\circ 28' 00''$   
 $R = 12,277.66'$   
 $T = 1,040.04'$   
 $L = 2,075.12'$   
 $E = 43.97'$   
 $\epsilon = \dots$   
 T.R. =  
 S.E. RUN =  
 P.C. STA. = 397+59.56  
 P.T. STA. = 418+34.68



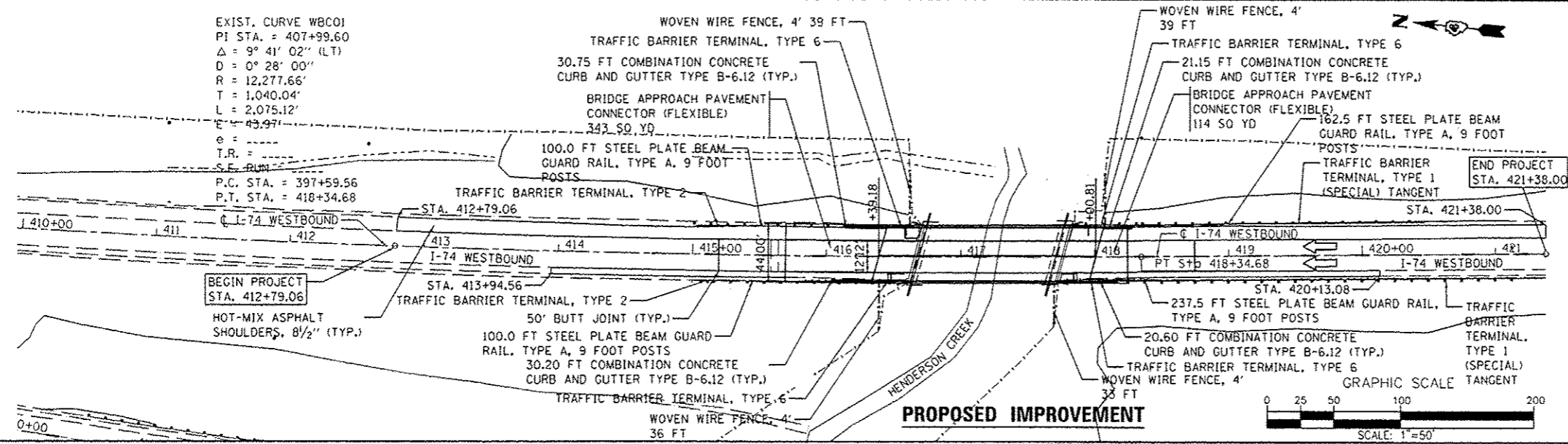
**NOTES**

1. SEE STRUCTURE PLANS FOR BRIDGE REMOVAL DETAILS.

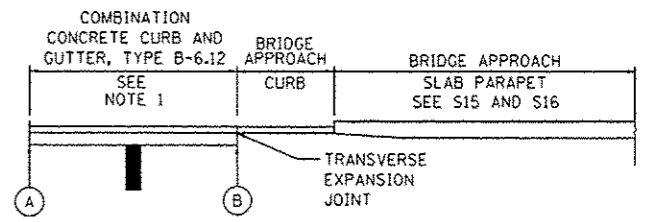
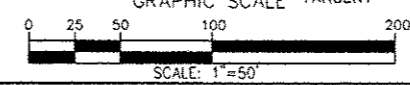
**EXISTING CONDITION AND DEMOLITION**



DATE	BY
DATE	BY
DATE	BY
DATE	BY



**PROPOSED IMPROVEMENT**



**PLAN VIEW**

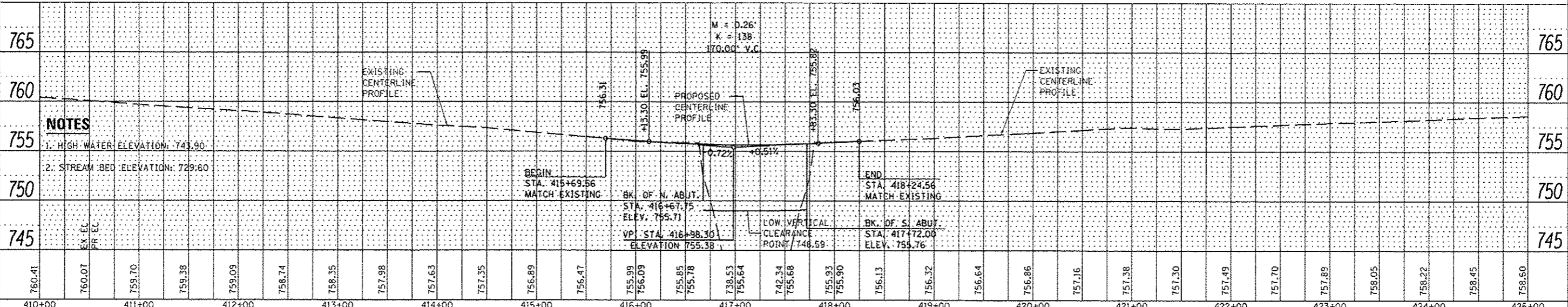
(A) NE CORNER: STA. 416+14.34  
 NW CORNER: STA. 416+04.20  
 SE CORNER: STA. 418+22.90  
 SW CORNER: STA. 418+11.52

(B) NE CORNER: STA. 416+45.14  
 NW CORNER: STA. 416+34.15  
 SE CORNER: STA. 418+06.71  
 SW CORNER: STA. 417+95.80

NOTES:  
 1. REFER TO STANDARD DRAWING 606001 FOR CONCRETE CURB AND GUTTER DETAILS.  
 2. NORTHEAST CORNER SHOWN. SIMILAR FOR NORTHWEST, SOUTHEAST AND SOUTHWEST CORNERS.

**CONCRETE SHOULDER CURB DETAIL**

DATE	BY
DATE	BY
DATE	BY
DATE	BY



**NOTES**

1. HIGH WATER ELEVATION: 743.90  
 2. STREAM BED ELEVATION: 729.80

FILE NAME: ...ND4-174-HendersonCreek-Combined-sh1813-WB	DESIGNED - JCP	REVISED -	<p>SEPSTEIN                  40 WEST FULLERTON STREET                  CHICAGO, ILLINOIS 60611-4120                  TEL: 312 474 1100                  FAX: 312 474 1317                  WWW.SEPSTEIN.COM</p>	<p>STATE OF ILLINOIS                  DEPARTMENT OF TRANSPORTATION</p>	<p>I-74 WESTBOUND                  ROADWAY PLAN AND PROFILE</p>	F.A.I. RTE. 74	SECTION 48-(125)BR, BR-1J	COUNTY KNOX	TOTAL SHEETS 131	SHEET NO. 13			
PLOT TIME: 10/21/17 AM	CHECKED - GAO	REVISED -				SCALE: 1" = 50'	SHEET NO. 1 OF 1	SHEETS	STA. 410+00.00 TO STA. 425+00.00	CONTRACT NO. 68885	ILLINOIS FED. AID PROJECT		
PLOT DATE: 11/18/2014	DATE: 08/01/14	REVISED -											

Rev sheet 11-12-14



**SUGGESTED CONSTRUCTION STAGING TRAFFIC CONTROL**

THE FOLLOWING SEQUENCE OF TRAFFIC CONTROL IS SUGGESTED. VARIATIONS MAY BE MADE, WITH THE APPROVAL OF THE ENGINEER, IF THE PREVAILING SITE CONDITIONS AT THE TIME OF CONSTRUCTION ALLOW.

**PRE-STAGE**

USE HIGHWAY STANDARD 701401 TO CLOSE ONE LANE IN EACH DIRECTION AT A TIME. REHABILITATE EXISTING SHOULDER AS SHOWN ON PLANS TO PREPARE FOR SHIFTED TRAFFIC ON SHOULDER IN SUBSEQUENT STAGES.

**STAGE I**

USE HIGHWAY STANDARD 701402 TO PLACE TEMPORARY CONCRETE BARRIER AND CLOSE LEFT EASTBOUND LANE OF TRAFFIC OF INTERSTATE 74. REDIRECT TRAFFIC TO USE REMAINING EASTBOUND LANE FOR ONE-WAY TRAFFIC. REMOVE EAST HALF OF EXISTING BRIDGE DECK AND STRUCTURE. CONSTRUCT PROPOSED EAST HALF OF BRIDGE DECK AND STRUCTURE.

USE HIGHWAY STANDARD 701402 TO PLACE TEMPORARY CONCRETE BARRIER AND CLOSE LEFT WESTBOUND LANE OF TRAFFIC OF INTERSTATE 74. REDIRECT TRAFFIC TO USE REMAINING WESTBOUND LANE FOR ONE-WAY TRAFFIC. REMOVE WEST HALF OF EXISTING BRIDGE DECK AND STRUCTURE. CONSTRUCT PROPOSED WEST HALF OF BRIDGE DECK AND STRUCTURE.

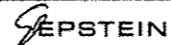
**STAGE II**

USE HIGHWAY STANDARD 701402 TO PLACE TEMPORARY CONCRETE BARRIER TO CLOSE RIGHT EASTBOUND LANE OF TRAFFIC OF INTERSTATE 74. REDIRECT TRAFFIC TO USE REMAINING EASTBOUND LANE FOR ONE-WAY TRAFFIC. REMOVE WEST HALF OF EXISTING SUBSTRUCTURE AND BRIDGE DECK. CONSTRUCT PROPOSED WEST HALF OF SUBSTRUCTURE AND BRIDGE DECK.

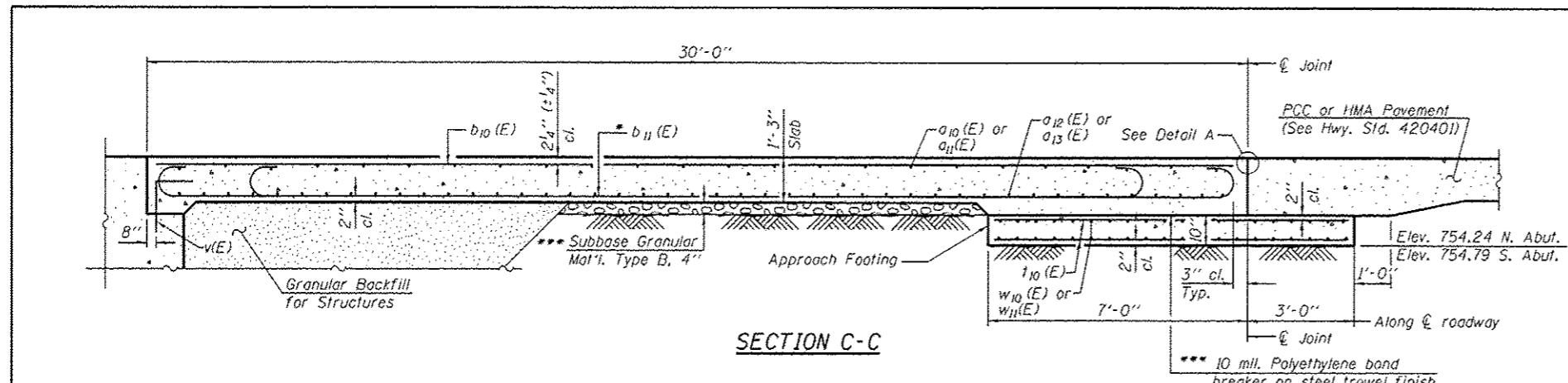
USE HIGHWAY STANDARD 701402 TO PLACE TEMPORARY CONCRETE BARRIER TO CLOSE RIGHT WESTBOUND LANE OF TRAFFIC OF INTERSTATE 74. REDIRECT TRAFFIC TO USE REMAINING WESTBOUND LANE FOR ONE-WAY TRAFFIC. REMOVE EAST HALF OF EXISTING SUBSTRUCTURE AND BRIDGE DECK. CONSTRUCT PROPOSED EAST HALF OF SUBSTRUCTURE AND BRIDGE DECK.

**SUGGESTED CONSTRUCTION STAGING TRAFFIC CONTROL NOTES**

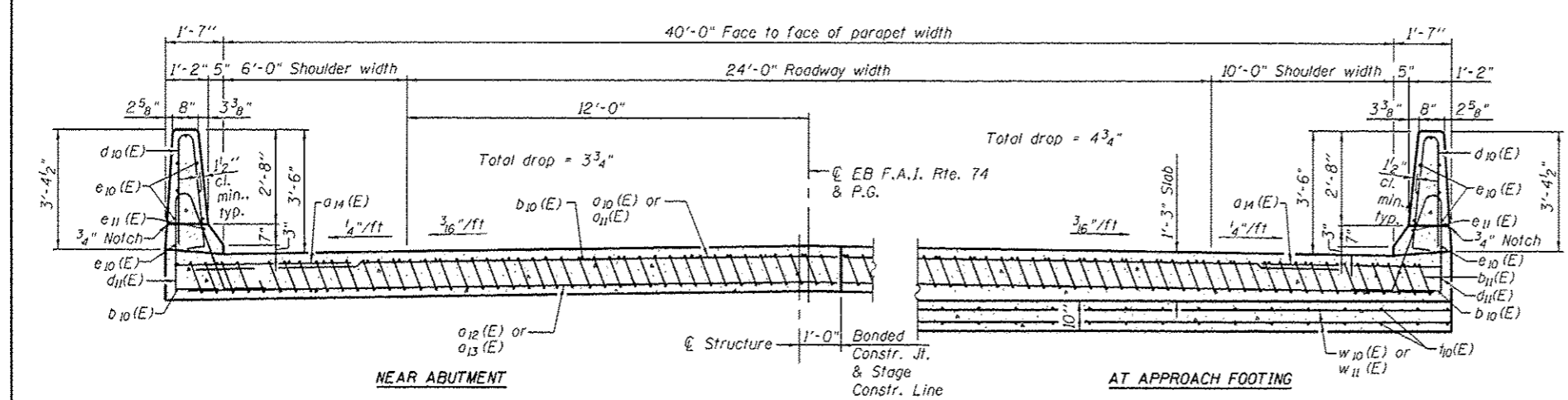
1. 4 INCH SOLID WHITE LINES SHALL BE USED TO DELINEATE THE TRAFFIC RIGHT EDGE OF THE PAVEMENT.
2. 4 INCH SOLID YELLOW LINES SHALL BE USED TO DELINEATE THE TRAFFIC LEFT EDGE OF THE PAVEMENT.
3. EXISTING SIGNS AND MESSAGES SHALL BE TEMPORARILY COVERED, MODIFIED OR REMOVED AS DIRECTED BY THE ENGINEER.
4. ALL OF THE TRAFFIC CONTROL DEVICES SHALL CONFORM TO THE TRAFFIC CONTROL PLANS OR THE LATEST EDITION OF THE "ILLINOIS MANUAL OF UNIFORM TRAFFIC CONTROL DEVICES FOR STREETS AND HIGHWAYS" AND SHALL BE IN PLACE BEFORE CONSTRUCTION IS STARTED.
5. THE EXACT NUMBER, LOCATION AND SPACING OF ALL SIGNS AND TRAFFIC CONTROL DEVICES MAY BE ADJUSTED TO FIT FIELD CONDITIONS DIRECTED BY THE ENGINEER.
6. TEMPORARY CONCRETE BARRIER AND TEMPORARY IMPACT ATTENUATORS SHALL BE PLACED AS INDICATED IN THE PLANS AND IN ACCORDANCE WITH SECTION 701 OF THE STANDARD SPECIFICATIONS. TEMPORARY CONCRETE BARRIER SHALL BE IN ACCORDANCE WITH SECTION 704 OF THE STANDARD SPECIFICATIONS, AND SHALL BE PLACED WHERE THE TRAVEL LANE IS ADJACENT TO A DROP OF 3 FEET OR GREATER AND AT OTHER LOCATIONS AS DIRECTED BY THE ENGINEER.
7. THE CONTRACTOR SHALL PROVIDE ADVANCE NOTICE CONSTRUCTION SIGNING. SIGNS SHALL BE ERECTED ONE WEEK IN ADVANCE OF THE START OF CONSTRUCTION. SIGNS SHALL BE REMOVED OR COVERED WHEN PROTECTION IS NOT REQUIRED AND RESTORED AS APPROPRIATE.
8. CONSTRUCTION WORK WILL NOT COMMENCE UNTIL ALL SIGNS AND PAVEMENT MARKINGS IN CONFLICT WITH THE STAGED CONSTRUCTION HAVE BEEN REMOVED AND ALL TEMPORARY SIGNS, PAVEMENT MARKINGS AND BARRICADES ARE IN PLACE AND APPROVED BY THE ENGINEER.
9. THE CONTRACTOR SHALL PROVIDE ALL BARRIERS, SIGNS, SUPPORTS, PAVEMENT MARKING MATERIALS AND LABOR NECESSARY FOR THE MAINTENANCE OF TRAFFIC UNLESS NOTED OTHERWISE IN THE SPECIAL PROVISIONS.
10. IMMEDIATELY AFTER THE COMPLETION OF THE WORK, THE CONTRACTOR SHALL RESTORE ALL PERMANENT PAVEMENT MARKINGS, SIGNS AND OTHER TRAFFIC CONTROL DEVICES THAT WERE COVERED, REMOVED, MODIFIED, DAMAGED OR OTHERWISE AFFECTED BY THE CONSTRUCTION.
11. TRAFFIC CONTROL DEVICES AND TEMPORARY CONCRETE BARRIER WALL SHALL BE IN ACCORDANCE WITH I.D.O.T. TRAFFIC CONTROL STANDARD 701901 AND 704001.
12. FOR EACH STAGE OF CONSTRUCTION PROVIDE TRAFFIC CONTROL AS SHOWN ON THE MAINTENANCE OF TRAFFIC PLANS, COORDINATE INSTALLATION OF TEMPORARY PAVEMENT MARKINGS AND OTHER TRAFFIC CONTROL DEVICES WITH THE EXISTING TRAFFIC PATTERNS AT THE ENDS OF THE PROJECT.
13. COST OF ANCHORING TEMPORARY CONCRETE BARRIER TO BRIDGE DECK TO BE INCLUDED IN TRAFFIC CONTROL AND PROTECTION, STANDARD 701402 PAY ITEM. SEE SHEET S5 OF S25.

FILE NAME : ...ND4-174-HendersonCreek-Combined-sh1814-st	DESIGNED - JCP	REVISED -	 840 WEST FULLTON STREET CHICAGO, ILLINOIS 60612-2728 TEL 312 454 9100 FAX 312 454 9217 WEB www.sepstein.com	STATE OF ILLINOIS DEPARTMENT OF TRANSPORTATION	SUGGESTED STAGES OF CONSTRUCTION AND TRAFFIC CONTROL		F.A.I. RTE.	SECTION	COUNTY	TOTAL SHEETS	SHEET NO.
PLOT TIME : 10:21:45 AM	CHECKED - GAO	REVISED -			NOTES		74	4B-1(25B)BR, BR-1	KNOX	131	14
PLOT DATE : 11/10/2014	DATE - 08/01/14	REVISED -			SCALE: N/A	SHEET NO. 1 OF 1 SHEETS	STA.	TO STA.	ILLINOIS FED. AID PROJECT CONTRACT NO. 68885		

Rev. Sheet 11-12-14

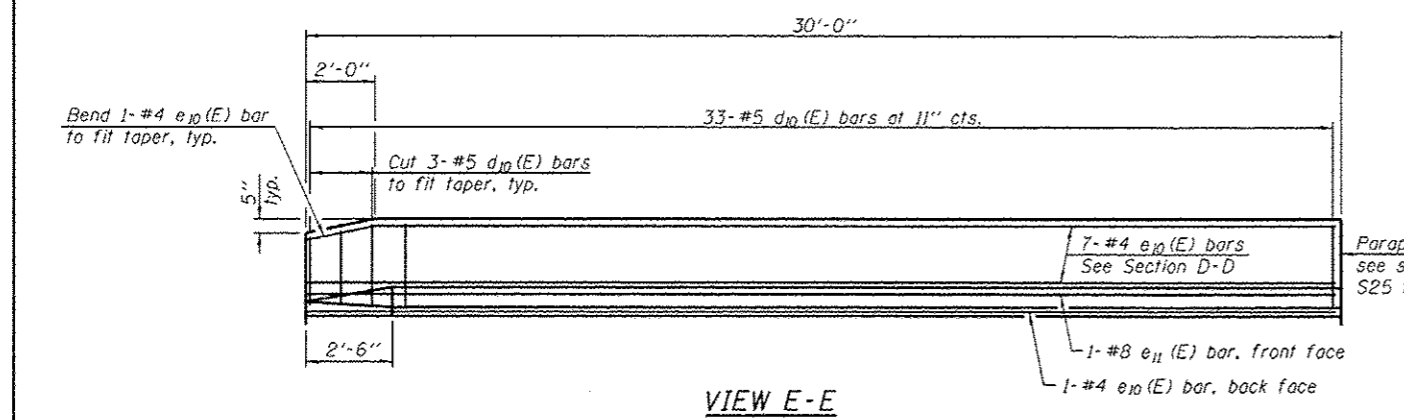


SECTION C-C

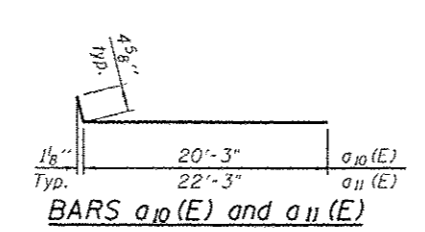


SECTION D-D

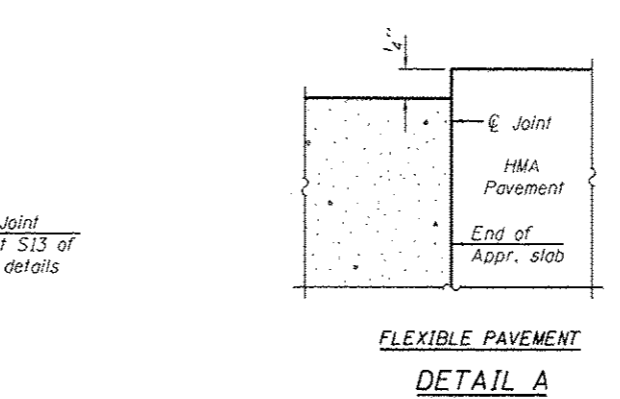
(See Plan for dimensions not shown)



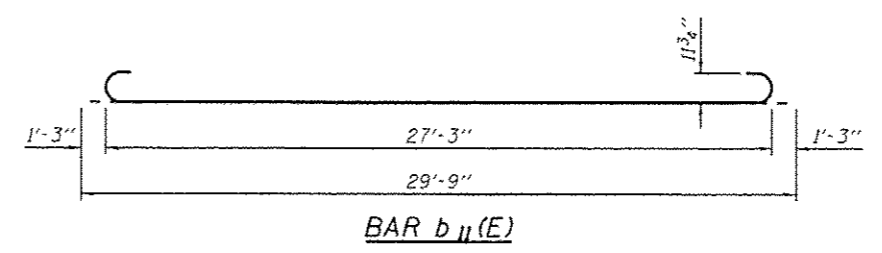
VIEW E-E



BARS a10(E) and a11(E)



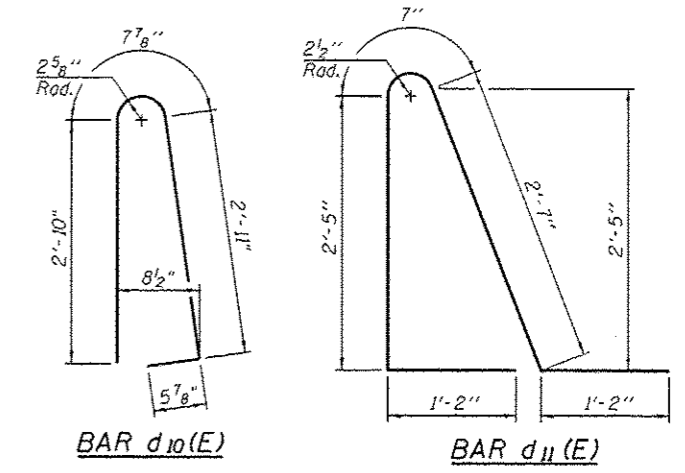
FLEXIBLE PAVEMENT  
DETAIL A



BAR b11(E)

NOTES

1. Approach slab and parapet concrete shall be paid for as Concrete Superstructure.
2. Approach footing concrete shall be paid for as Concrete Structures.
3. Reinforcement shall be paid for as Reinforcement Bars, Epoxy Coated.
4. For v(E) bar details, see sheet S13 of S25.
5. The approach footing maximum applied service bearing pressure (Omax) = 2.0 ksf.
6. For bar splicer details, see sheet S24 of S25.
7. Cost of excavation for approach footing included with Concrete Structures.
8. For Granular Backfill for Structures and drainage treatment details, see sheet S2 of S25.
9. For additional parapet details, see sheet S13 of S25.

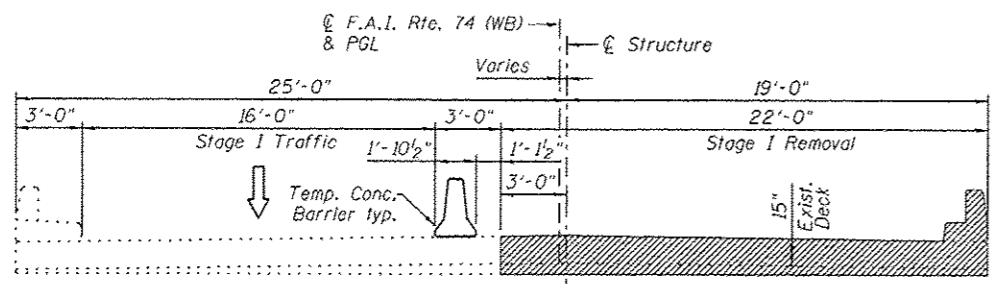


\* Tilt #9 b11(E) bars as required to maintain clearance.

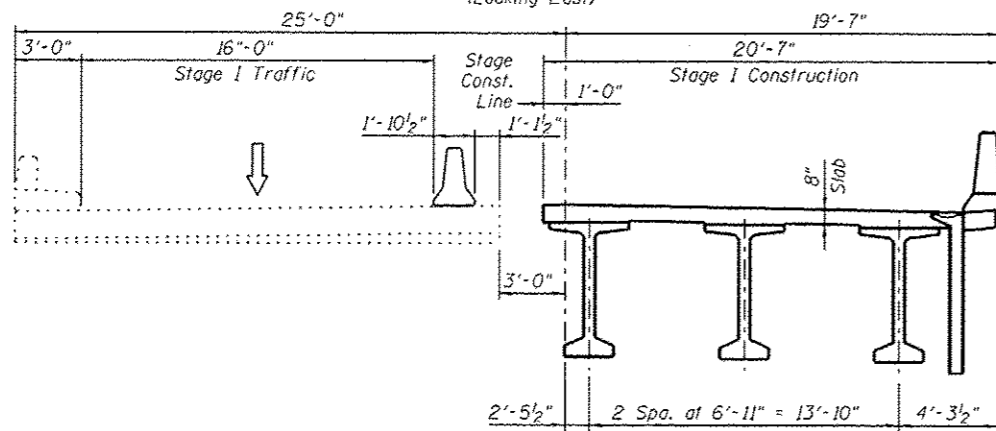
TWO APPROACH SLABS  
BILL OF MATERIAL

Bar	No.	Size	Length	Shape
a10(E)	50	#4	20' - 8"	—
a11(E)	50	#4	22' - 8"	—
a12(E)	92	#5	20' - 4"	—
a13(E)	92	#5	22' - 4"	—
a14(E)	96	#6	6' - 6"	—
b10(E)	78	#4	29' - 8"	—
b11(E)	214	#9	29' - 9"	—
d10(E)	132	#5	6' - 11"	⌒
d11(E)	132	#5	7' - 11"	⌒
e10(E)	32	#4	29' - 8"	—
e11(E)	4	#8	29' - 8"	—
f10(E)	184	#4	9' - 8"	—
w10(E)	80	#5	20' - 4"	—
w11(E)	80	#5	22' - 4"	—
Concrete Superstructure		Cu. Yd.	138.5	
Concrete Structures		Cu. Yd.	26.6	
Bridge Deck Grooving		Sq. Yd.	267	
Protective Coat		Sq. Yd.	326	
Reinforcement Bars, Epoxy Coated		Pound	37,430	

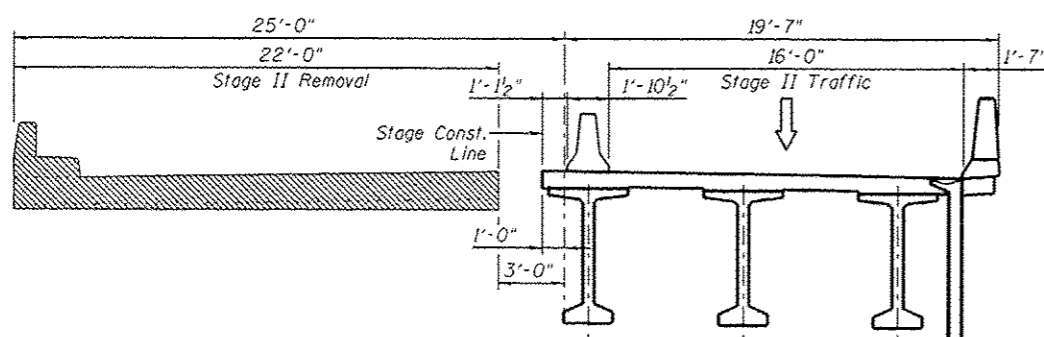
Rev. sheet 11-12-14



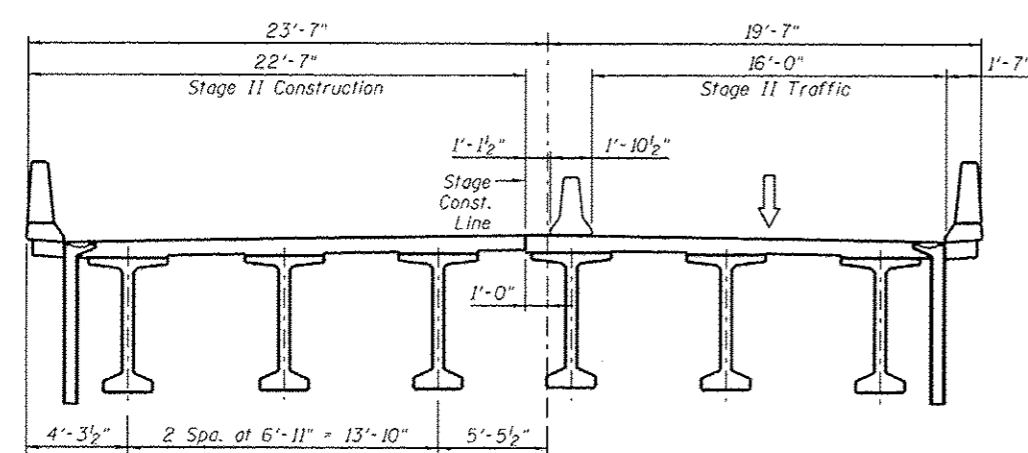
**STAGE I REMOVAL**  
(Looking East)



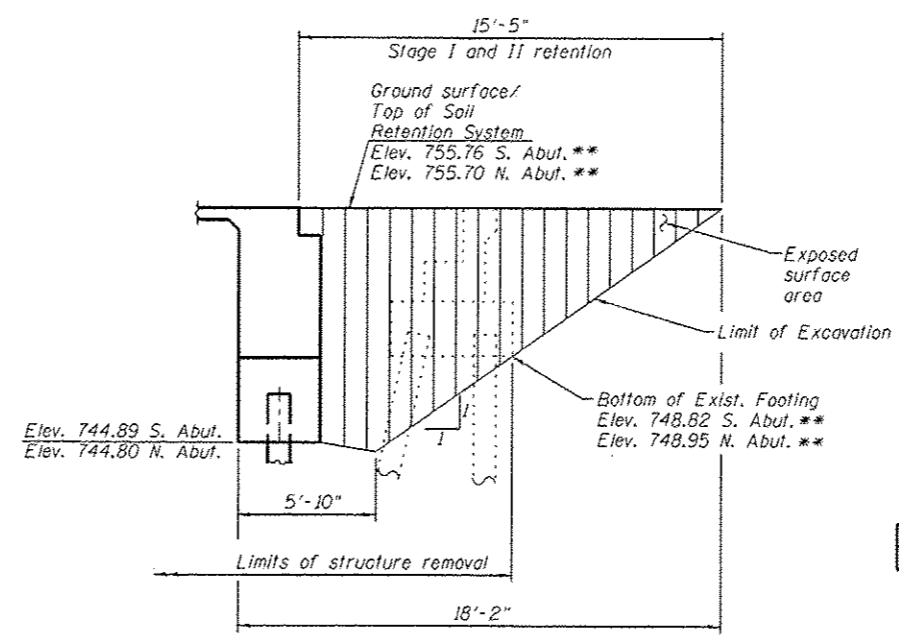
**STAGE I CONSTRUCTION**



**STAGE II REMOVAL**



**STAGE II CONSTRUCTION**



**TEMPORARY SOIL RETENTION SYSTEM**

\*\*To be verified in field by the Contractor

**BILL OF MATERIAL**

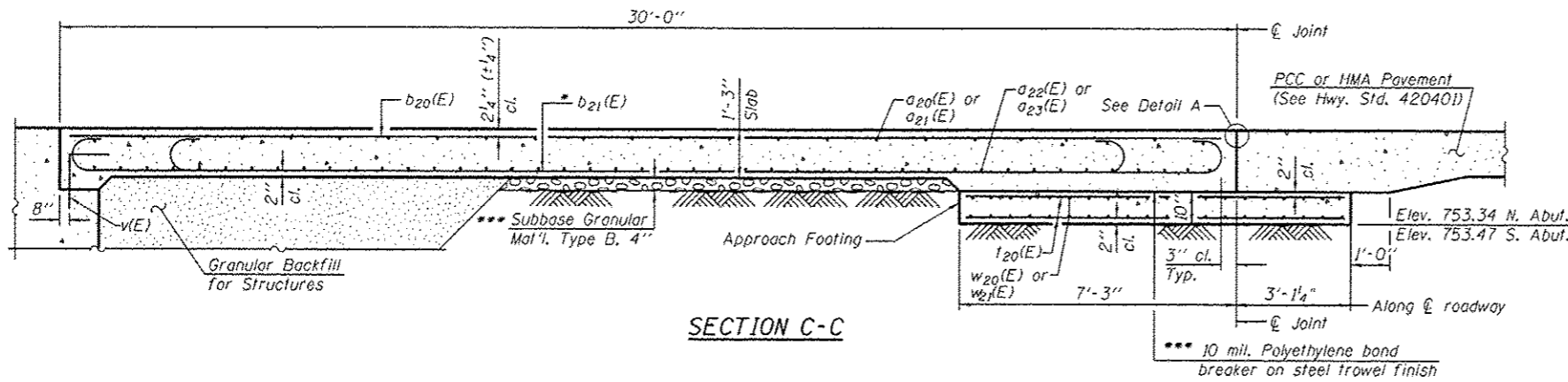
ITEM	UNIT	QUANTITY
Temporary Soil Retention System	Sq. Ft.	208

**NOTES**

- All stage cross sections are looking South.
- See sheet S5 of S25 for Temporary Concrete Barrier.
- Backfill shall be placed behind the abutment after the superstructure has been poured and false work removed. See Article 502.10 of the Standard Specifications.
- A cantilevered sheet piling design does not appear feasible and additional members or other retention systems may be necessary. The Contractor shall submit a temporary soil retention system design including plan details and calculations for review and acceptance by the Engineer.
- Hatched area indicates Removal of Existing Structures.

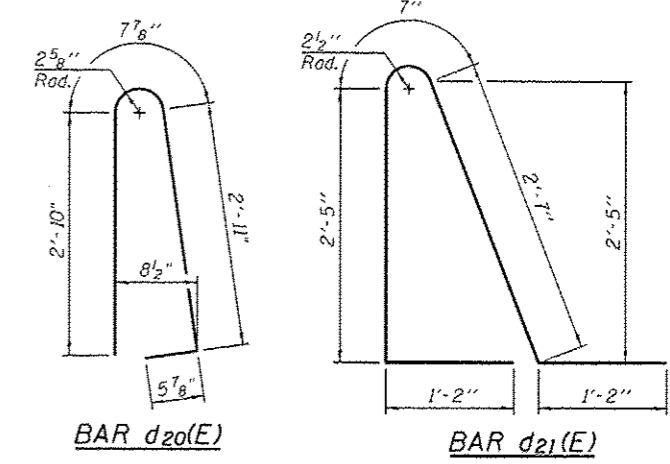
FILE NAME = ...B4B0041-68884-04-5tg.const.dgn	DESIGNED EV	REVISED -	<p>SEPSTEIN 900 SHEET PAVON STREET CHICAGO, ILLINOIS 60642-1255 TEL 312 436 1100 FAX 312 555 1217 WEB www.sepstein.com</p>	<p>STATE OF ILLINOIS DEPARTMENT OF TRANSPORTATION</p>	<p>STAGE CONSTRUCTION DETAILS AND TEMP. SOIL RETENTION SYSTEM STRUCTURE NO. 048-0091</p>	F.A.I. RTE. 74	SECTION 48-(125B)BR, BR-1)	COUNTY KNOX	TOTAL SHEETS 131	SHEET NO. 50
PLOT TIME = 4:37:35 PM	DRAWN JCP	REVISED -				CONTRACT NO. 68885				
PLOT DATE = 11/3/2014	CHECKED PC	REVISED -				SHEET NO. 54 OF 525 SHEETS				
	DATE 05 03 2013	REVISED -				ILLINOIS FED. AID PROJECT				

Rev. Sheet 11-12-14

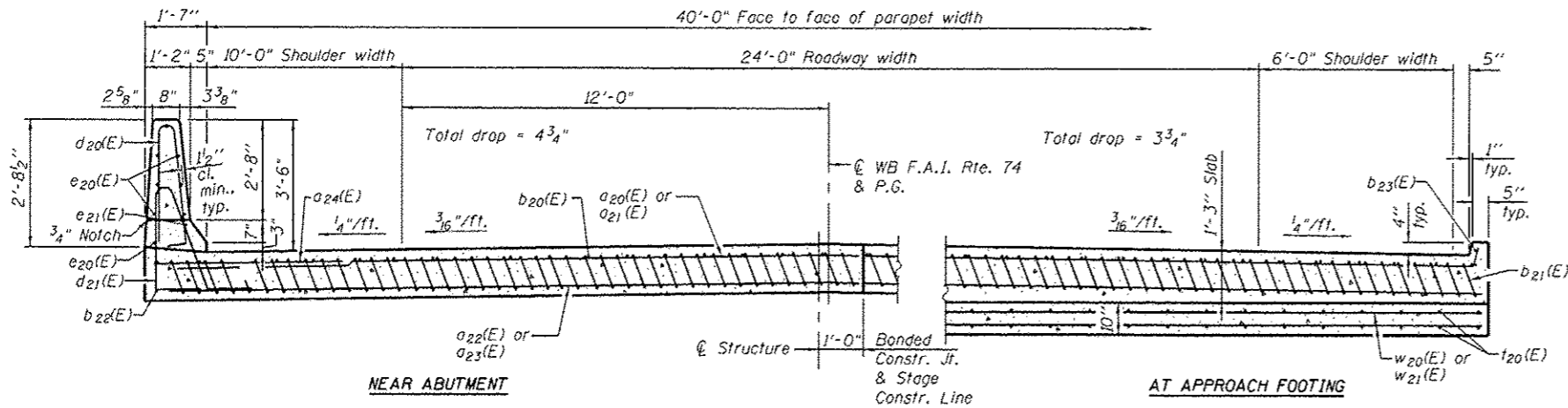


**NOTES**

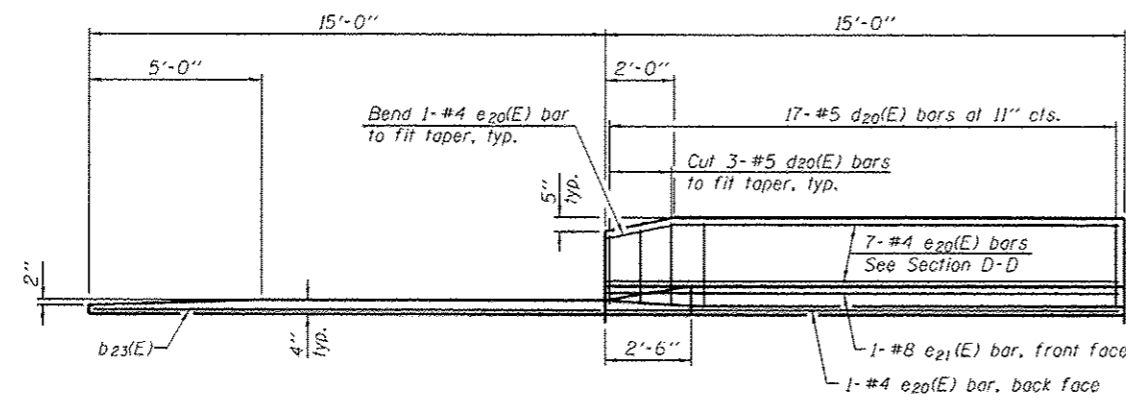
1. Approach slab and parapet concrete shall be paid for as Concrete Superstructure.
2. Approach footing concrete shall be paid for as Concrete Structures.
3. Reinforcement shall be paid for as Reinforcement Bars, Epoxy Coated.
4. For v(E) bar details, see sheet S13 of S25.
5. The approach footing maximum applied service bearing pressure ( $Q_{max}$ ) = 2.0 ksf.
6. For bar splicer details, see sheet S24 of S25.
7. Cost of excavation for approach footing included with Concrete Structures.
8. For Granular Backfill for Structures and drainage treatment details, see sheet S2 of S25.
9. For additional parapet details, see sheet S13 of S25.



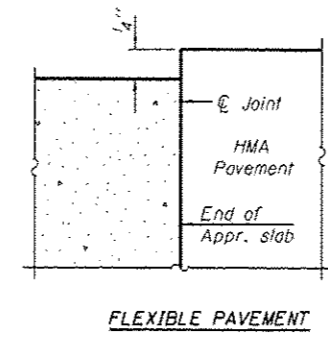
\* Tilt #9 b21(E) bars as required to maintain clearance.



**SECTION D-D**  
(See Plan for dimensions not shown)

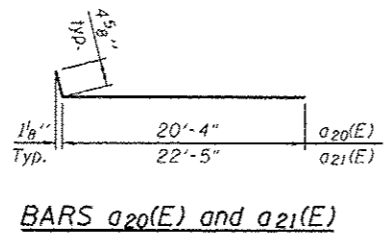


**VIEW E-E**

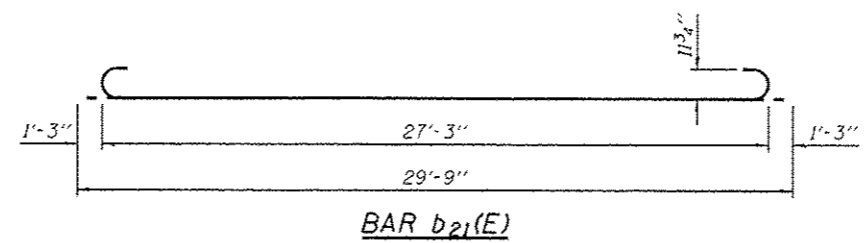


**FLEXIBLE PAVEMENT**

**DETAIL A**



**BARS a20(E) and a21(E)**

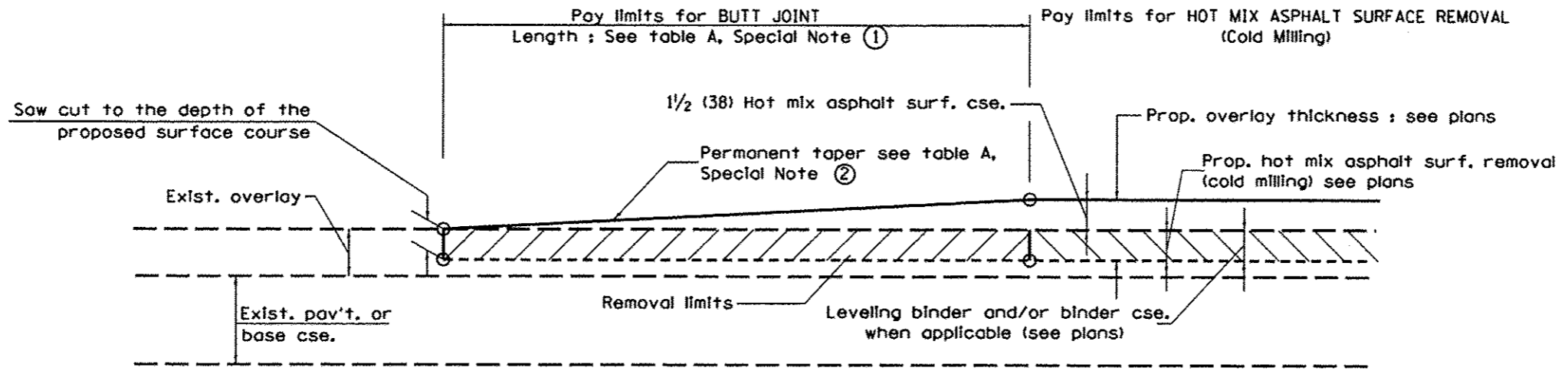


**BAR b21(E)**

**TWO APPROACH SLABS  
BILL OF MATERIAL**

Bar	No.	Size	Length	Shape
a20(E)	50	#4	20' - 9"	—
a21(E)	50	#4	22' - 10"	—
a22(E)	92	#5	20' - 4"	—
a23(E)	92	#5	22' - 5"	—
a24(E)	48	#6	6' - 6"	—
b20(E)	70	#4	29' - 8"	—
b21(E)	202	#9	29' - 9"	—
b22(E)	4	#4	14' - 8"	—
b23(E)	4	#4	14' - 9"	—
d20(E)	68	#5	6' - 11"	U
d21(E)	68	#5	7' - 11"	U
e20(E)	32	#4	14' - 8"	—
e21(E)	4	#8	14' - 8"	—
l20(E)	176	#4	9' - 8"	—
w20(E)	80	#5	20' - 4"	—
w21(E)	80	#5	22' - 5"	—
Concrete Superstructure				Cu. Yd. 131.1
Concrete Structures				Cu. Yd. 26.7
Bridge Deck Grooving				Sq. Yd. 269
Protective Coat				Sq. Yd. 304
Reinforcement Bars, Epoxy Coated				Pound 34,160

Rev Sheet 11-12-14



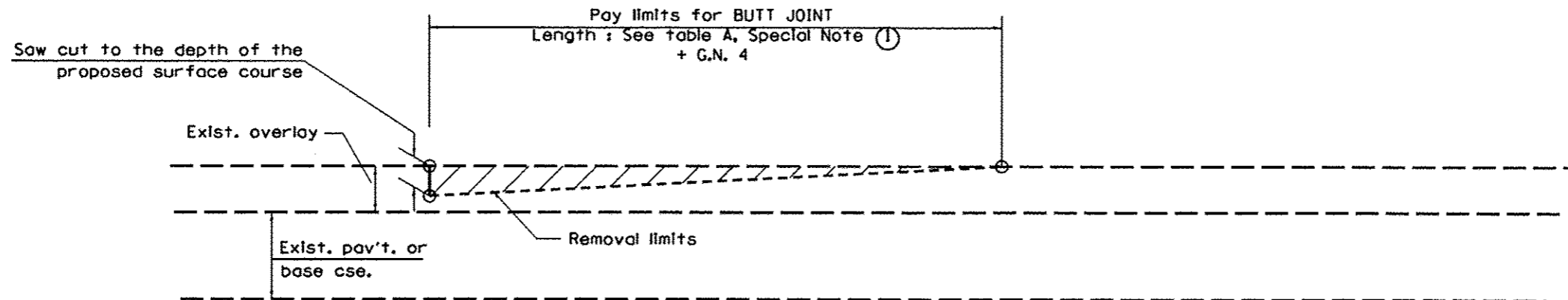
**CASE 1 : WITH HOT MIX ASPHALT SURFACE REMOVAL (COLD MILLING)**

**TABLE A  
TAPER RATES**

SPECIAL NOTE NUMBER	ELEMENT	MAINLINE INTERSTATES & 4-LANE EXPRESSWAYS	ALL OTHERS
①	BUTT JOINT TAPER RATE	1:480	1:240
②	TEMPORARY RAMP TAPER RATE	1:80	1:40

**GENERAL NOTES**

1. The work shall be done in accordance with Article 406.08 and the Special Provision for Butt Joints.
2. The pavement surface to be removed may be either bituminous or P.C. concrete. The work shall be performed in accordance with Article 440.04 and the Special Provisions for Butt Joints.
3. The saw cut joints shall be primed just prior to the placing of bituminous material. The work will be in accordance with the applicable portions of Article 406.05.
4. The length of butt joint is based on the taper rate times change in cold milling depth within the butt joint pay limits, unless otherwise indicated.

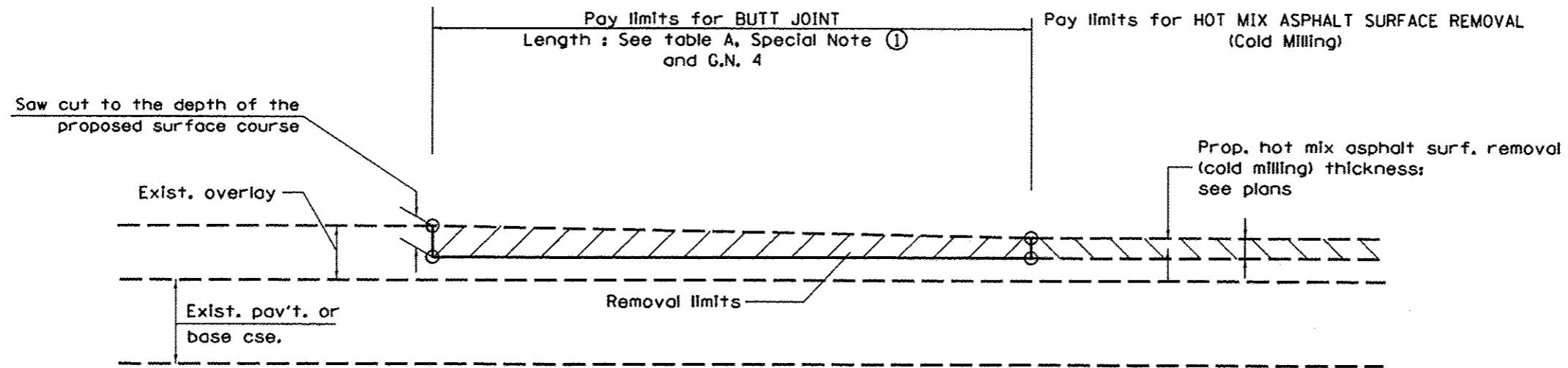


**CASE 2 : NO HOT MIX ASPHALT SURFACE REMOVAL (COLD MILLING)**

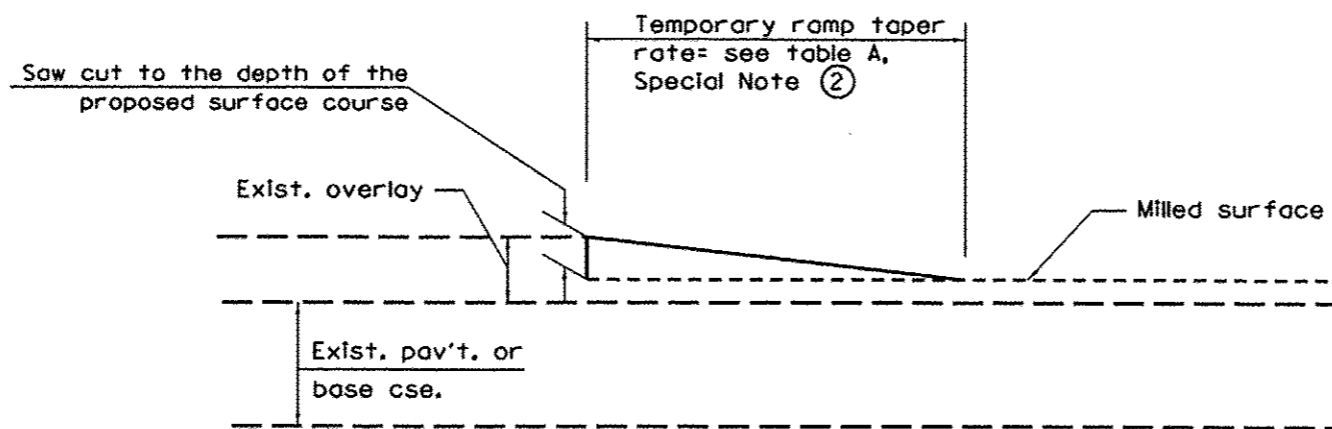
*Added sheet 11-12-14*

All dimensions are in inches (millimeters) unless otherwise noted.

01-01-97	RENUM. C-23.01, NEW REVISION BOX	T.P.	08-21-13	MAJOR MODIFICATIONS	R.D.	STATE OF ILLINOIS DEPARTMENT OF TRANSPORTATION	BUTT JOINTS	SHT. 1 OF 3 CADD STD. 406101-04	F.A. RTE.	SECTION	COUNTY	TOTAL SHEETS	SHEET NO.
04-01-97	CORRECTION TO DEPTH	J.A.							74	48-(1258)BR, BR-1)	KNOX	131	72A
09-15-05	REVISED DESIGNER NOTE	M.M.A.							CONTRACT NO. 68885				
10-16-06	REVISED TO 2007 SPEC.	M.A.							FED. ROAD DIST. NO. ILLINOIS FED. AID PROJECT				



**CASE 4 : NO HOT MIX ASPHALT SURFACE REMOVAL (COLD MILLING)  
TIE-IN TO EXISTING BITUMINOUS TAPER**

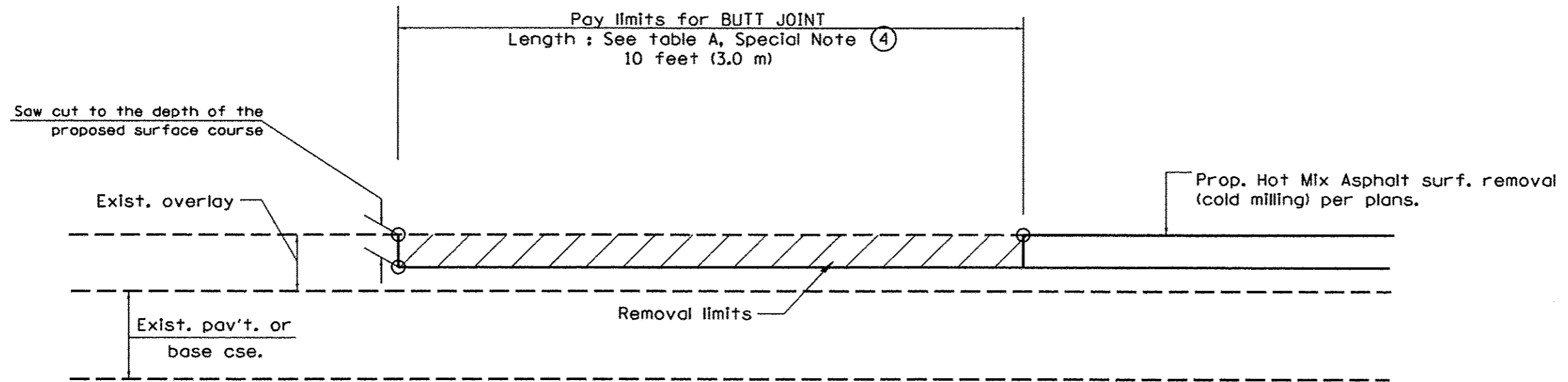


**DETAIL TEMPORARY RAMP**

*Added Sheet 11-12-14*

All dimensions are in inches (millimeters) unless otherwise noted.

STATE OF ILLINOIS DEPARTMENT OF TRANSPORTATION				BUTT JOINTS				SHT. 2 OF 3 CADD STD. 406101-D4	
NOT TO SCALE				F.A. RTE.		SECTION		COUNTY	
				74		40-(1250BR, BR-1)		KNOX	
				TOTAL SHEETS		131		720	
				CONTRACT NO. 68885					
				FED. ROAD DIST. NO. ILLINOIS FED. AID PROJECT					



**CASE 4 : SINGLE LIFT OVERLAY WITH EQUIVALENT DEPTH  
HOT MIX ASPHALT SURFACE REMOVAL (COLD MILLING)  
TIE-IN TO EXISTING BITUMINOUS TAPER**

*Added sheet 11-12-14*

All dimensions are in inches (millimeters) unless otherwise noted.

				STATE OF ILLINOIS DEPARTMENT OF TRANSPORTATION		BUTT JOINTS		SHT. 3 OF 3 CADD STD. 406101-04		FED. ROAD DIST. NO. ILLINOIS FED. AID PROJECT	
				NOT TO SCALE						CONTRACT NO. 68885	
										TOTAL SHEETS 131	
										SHEET NO. 72C	
										SECTION 4B-1(25)BR. BR-1	
										COUNTY KNOX	
										F.A. RTE. 74	