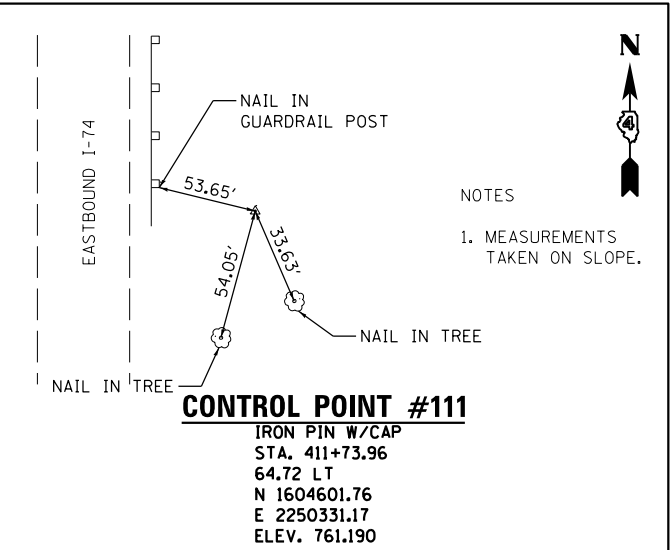
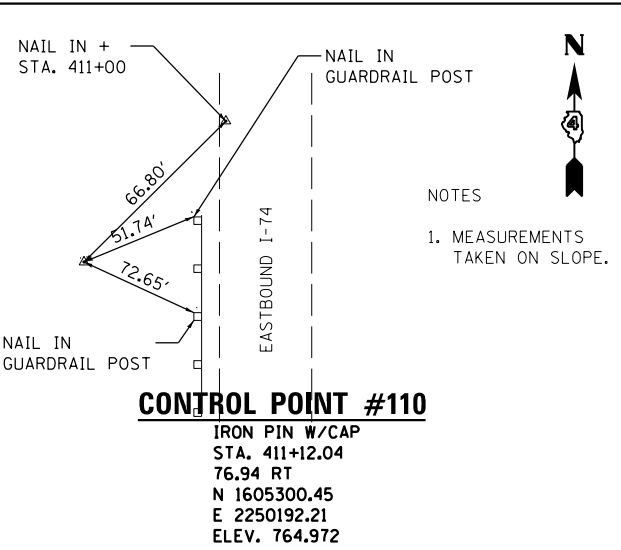
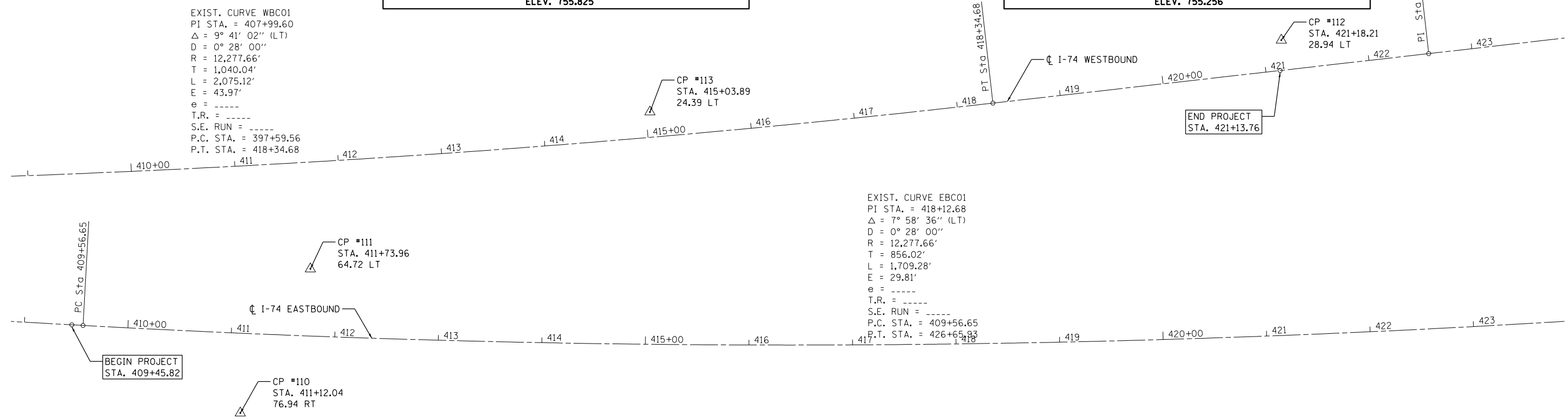


EXIST. CURVE WBC01  
 PI STA. = 407+99.60  
 $\Delta = 9^\circ 41' 02''$  (LT)  
 D =  $0^\circ 28' 00''$   
 R = 12,277.66'  
 T = 1,040.04'  
 L = 2,075.12'  
 E = 43.97'  
 e = -----  
 T.R. = -----  
 S.E. RUN = -----  
 P.C. STA. = 397+59.56  
 P.T. STA. = 418+34.68

EXIST. CURVE EBC01  
 PI STA. = 418+12.68  
 $\Delta = 7^\circ 58' 36''$  (LT)  
 D =  $0^\circ 28' 00''$   
 R = 12,277.66'  
 T = 856.02'  
 L = 1,709.28'  
 E = 29.81'  
 e = -----  
 T.R. = -----  
 S.E. RUN = -----  
 P.C. STA. = 409+56.65  
 P.T. STA. = 426+65.93

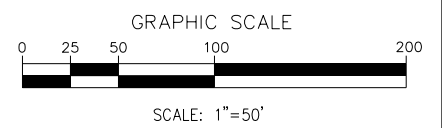


NOTES  
 1. MEASUREMENTS  
 TAKEN ON SLOPE.

NOTES  
 1. MEASUREMENTS  
 TAKEN ON SLOPE.

**BENCHMARKS**

BM #1 CHISELED SQUARE LOCATED ON THE NORTH END OF WEST WING WALL OF SOUTHBOUND HENDERSON CREEK BRIDGE (I-74) ELEV. 758.260  
 BM #3 CHISELED SQUARE LOCATED ON THE SOUTH END OF WEST WING WALL OF NORTHBOUND HENDERSON CREEK BRIDGE (I-74) ELEV. 757.278



FILE NAME =	DESIGNED - JCP	REVISED -	 800 WEST FULTON STREET CHICAGO, ILLINOIS 60611-1209 TEL. 312.454.9100 FAX 312.559.1217 WEB www.sepstein.com	<b>STATE OF ILLINOIS</b> <b>DEPARTMENT OF TRANSPORTATION</b>	<b>ALIGNMENT, TIES AND BENCHMARKS</b>		F.A.I. RTE.	SECTION	COUNTY	TOTAL SHEETS	SHEET NO.	
... \D4-174-HendersonCreek-Combined-sht011-ATB.DWG	DRAWN - JCP	REVISED -					74	48-(25B)BR, BR-1J	KNOX	131	11	
PLOT TIME = 11:28:52 PM	CHECKED - GAO	REVISED -			SCALE: 1" = 50'		SHEET NO. 1 OF 1 SHEETS	STA. 415+00.00 TO STA. 418+24.56	CONTRACT NO. 68B85			
PLOT DATE = 8/12/2014	DATE - 08/01/14	REVISED -			ILLINOIS FED. AID PROJECT							