
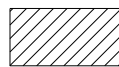

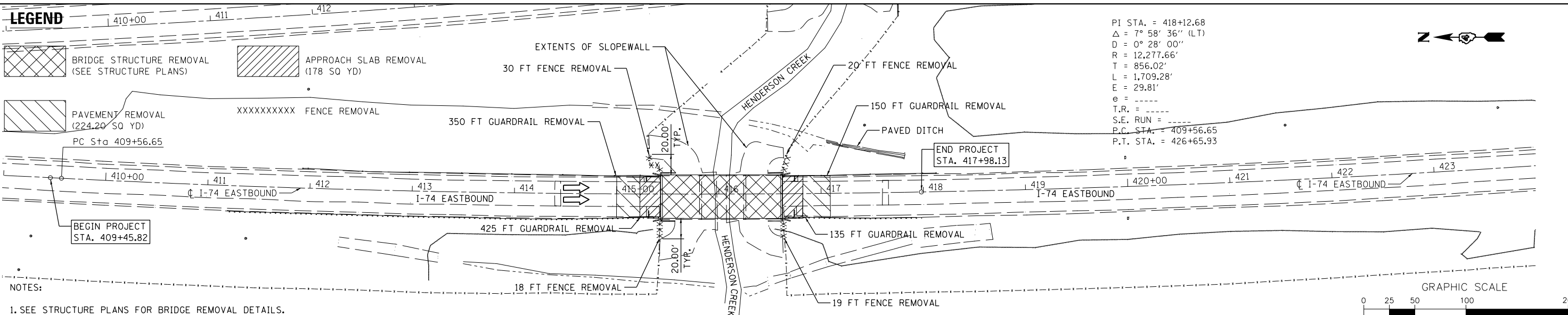


LEGEND

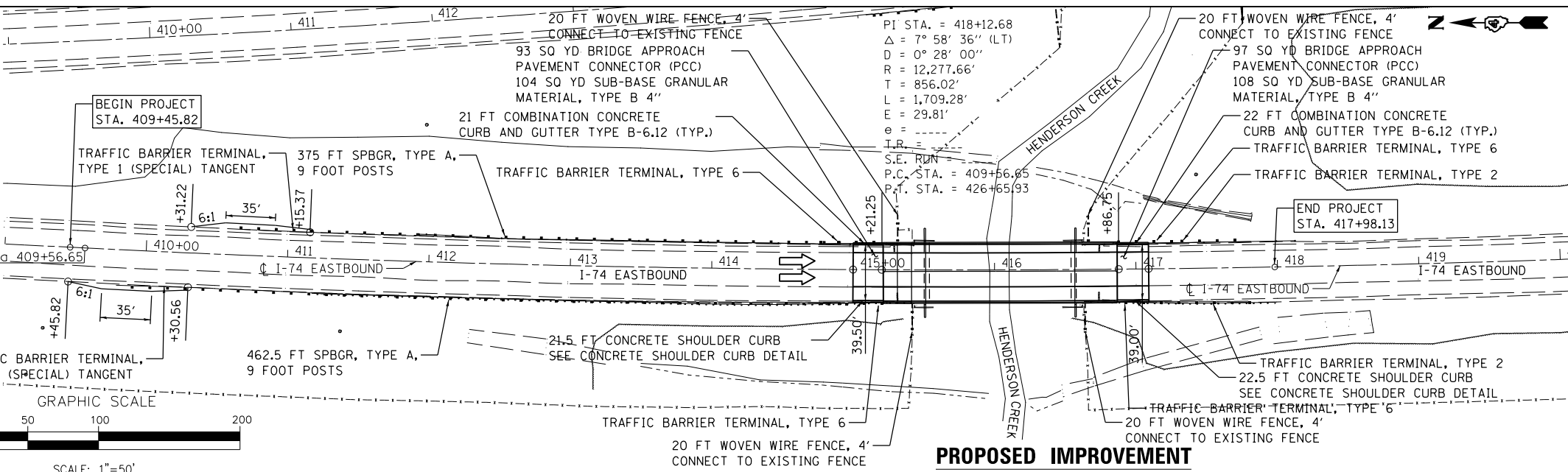
-  BRIDGE STRUCTURE REMOVAL (SEE STRUCTURE PLANS)
-  APPROACH SLAB REMOVAL (178 SQ YD)
-  PAVEMENT REMOVAL (224.20 SQ YD)
- XXXXXXXXXX FENCE REMOVAL



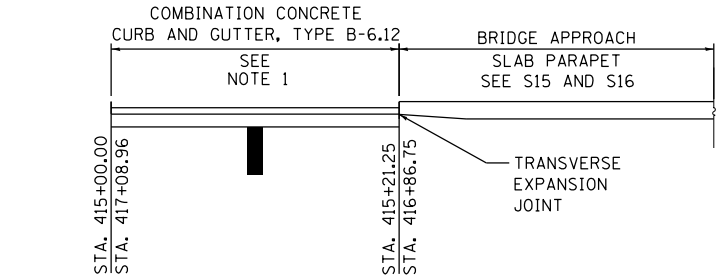
PI STA. = 418+12.68
 $\Delta = 7^\circ 58' 36''$ (LT)
 $D = 0^\circ 28' 00''$
 $R = 12,277.66'$
 $T = 856.02'$
 $L = 1,709.28'$
 $E = 29.81'$
 $e = \dots$
 $T.R. = \dots$
 $S.E. RUN = \dots$
 $P.C. STA. = 409+56.65$
 $P.T. STA. = 426+65.93$

NOTES:
 1. SEE STRUCTURE PLANS FOR BRIDGE REMOVAL DETAILS.

EXISTING CONDITION AND DEMOLITION



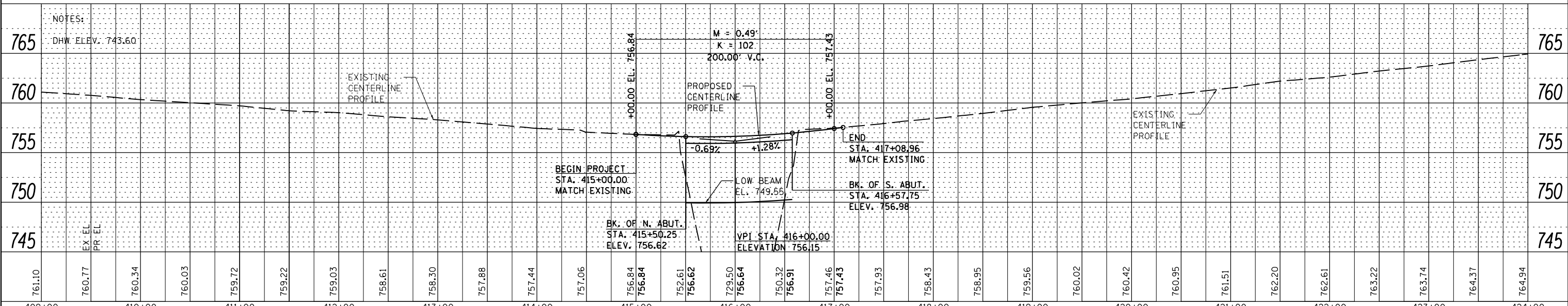
PI STA. = 418+12.68
 $\Delta = 7^\circ 58' 36''$ (LT)
 $D = 0^\circ 28' 00''$
 $R = 12,277.66'$
 $T = 856.02'$
 $L = 1,709.28'$
 $E = 29.81'$
 $e = \dots$
 $T.R. = \dots$
 $S.E. RUN = \dots$
 $P.C. STA. = 409+56.65$
 $P.T. STA. = 426+65.93$



PLAN VIEW

NOTES:
 1. REFER TO STANDARD DRAWING 606001 FOR COMBINATION CONCRETE CURB AND GUTTER DETAILS.
 2. NORTHEAST CORNER SHOWN. SIMILAR FOR NORTHWEST, SOUTHEAST AND SOUTHWEST CORNERS.

CONCRETE SHOULDER CURB DETAIL



STATION	EX. EL.	PR. EL.
409+00	761.10	760.77
410+00	760.34	760.03
411+00	759.72	759.22
412+00	759.03	758.61
413+00	758.30	757.88
414+00	757.44	757.06
415+00	756.84	756.84
416+00	756.64	756.91
417+00	757.46	757.43
418+00	757.93	758.43
419+00	758.95	759.56
420+00	760.02	760.42
421+00	760.95	761.51
422+00	762.20	762.61
423+00	763.22	763.74
424+00	764.37	764.94

FILE NAME = ...ND4-174-HendersonCreek-Combined-sht012-EBp	DESIGNED - JCP	REVISED -	 STATE OF ILLINOIS DEPARTMENT OF TRANSPORTATION 800 WEST FULTON STREET CHICAGO, ILLINOIS 60611-1259 TEL 312 454 9100 FAX 312 559 1217 WEB www.stepstein.com	I-74 EASTBOUND ROADWAY PLAN AND PROFILE		F.A.I. R.T.E. = 74	SECTION = 48-(25B)BR, BR-1J	COUNTY = KNOX	TOTAL SHEETS = 131	SHEET NO. = 12	
PLOT TIME = 1:54:52 PM	CHECKED - GAO	REVISED -		SCALE: 1" = 50'	SHEET NO. 1 OF 1 SHEETS	STA. 409+00.00 TO STA. 424+00.00	CONTRACT NO. 68B85				
PLOT DATE = 8/12/2014	DATE = 08/01/14	REVISED -		ILLINOIS FED. AID PROJECT							