

RTE.	SECTION	COUNTY	TOTAL SHEETS	SHEET NO.
VARIOUS	D4 SIGNAL WORK 2015	VARIOUS	13	1
ILLINOIS CONTRACT NO. 68B90				

1. COVER SHEET
2. CONSTRUCTION NOTES AND COMMITMENTS
- 3-4. SUMMARY OF QUANTITIES
- 5-8. LED REPLACEMENT LOCATIONS
- 9-10. LOOP INSTALLATION DETAILS (IL 29 & TRUITT)
11. LOOP INSTALLATION (IL 9 & EIGHTH)
12. FYA CONVERSION (IL 29 & IL 98)
13. CABINET INSTALLATION DETAILS (IL 116 & SPRINGFIELD)

DEPARTMENT OF TRANSPORTATION
DIVISION OF HIGHWAYS

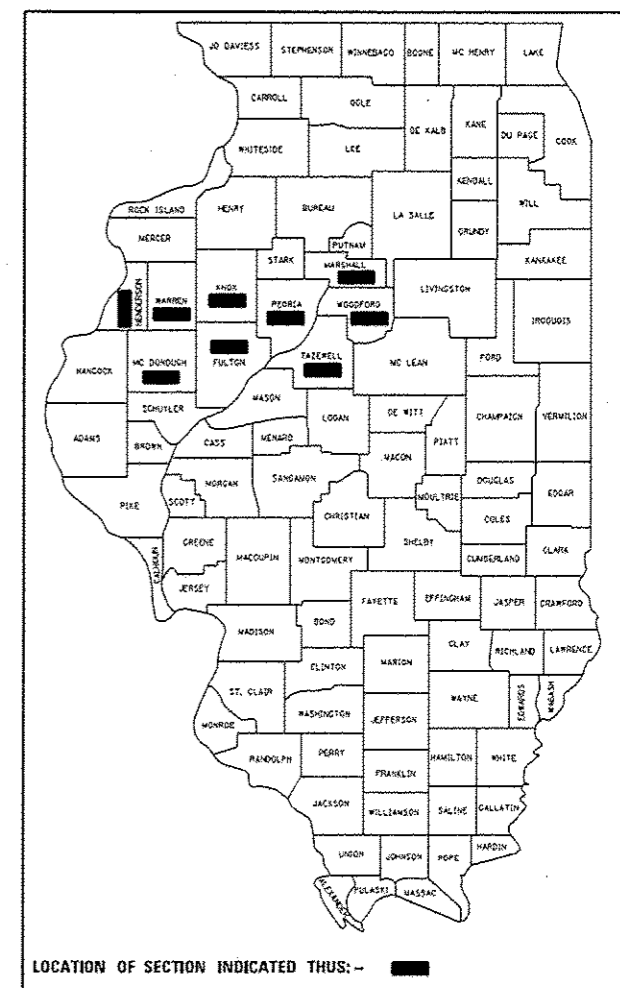
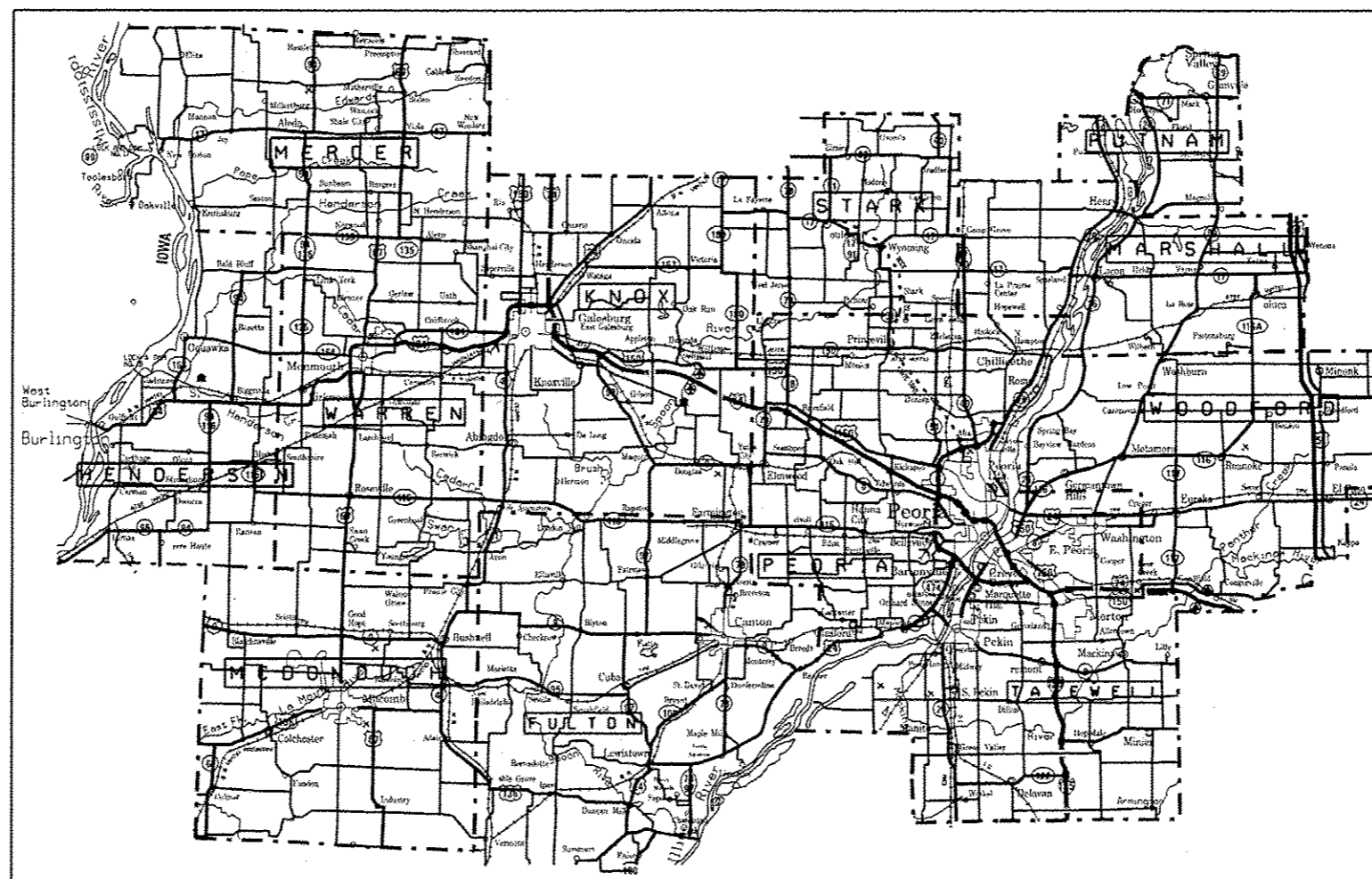
PROPOSED HIGHWAY PLANS

VARIOUS ROUTES
SECTION D4 SIGNAL WORK 2015
VARIOUS COUNTIES

C-94-089-14

HIGHWAY STANDARDS

STANDARDS LISTED
ON SHEET 2



PROJECT DESCRIPTION

REPLACEMENT OF TRAFFIC SIGNAL AND PEDESTRIAN LED MODULES, REPLACEMENT OF BATTERY BACKUP SYSTEM BATTERIES, INSTALLATION OF TRAFFIC SIGNAL AND PEDESTRIAN HEADS, INSTALLATION OF DETECTOR LOOPS, CONDUIT, AND HANDHOLES AND CONVERSION OF INTERSECTIONS TO FLASHING YELLOW ARROW SEQUENCING

J.U.L.I.E.
JOINT UTILITY LOCATION INFORMATION FOR EXCAVATION
1-800-892-0123
OR 811

PROJECT ENGINEER: ERIC HOWALD (309) 671-4481
PROJECT MANAGER: RANDY LANINGA (309) 671-4477
CATALOG NO. 35126-00D
CONTRACT NO. 68B90

STATE OF ILLINOIS
DEPARTMENT OF TRANSPORTATION
DIVISION OF HIGHWAYS

SUBMITTED *9/28* 20 *14*
Kevin A. Hawthorn
DEPUTY DIRECTOR OF HIGHWAYS, REGION ENGINEER

Oct 17 20 *14*
John D. Baranzoni, P.E.
ENGINEER OF DESIGN AND ENVIRONMENT

Oct 17 20 *14*
Amir Osman, P.E.
DIRECTOR OF HIGHWAYS, CHIEF ENGINEER

PRINTED BY THE AUTHORITY
OF THE STATE OF ILLINOIS

COMMITMENTS: THERE ARE NO COMMITMENTS FOR THIS PROJECT.

HIGHWAY STANDARDS	
STANDARD	APPLICATION
000001-06	STANDARD SYMBOLS, ABBREVIATIONS, AND PATTERNS
001006	DECIMAL OF AN INCH AND OF A FOOT
701001-02	OFF-ROAD OPERATIONS, 2L, 2W, MORE THAN 4.5 M (15') AWAY
701006-05	OFF-ROAD OPERATIONS, 2L, 2W, 4.5 M (15') TO 600 MM (24") FROM PAVEMENT EDGE
701101-04	OFF-ROAD OPERATIONS, MULTILANE, 4.5 M (15') TO 600 MM (24") FROM PAVEMENT EDGE
701106-02	OFF-ROAD OPERATIONS, MULTILANE, MORE THAN 4.5 (15') AWAY
701426-06	LANE CLOSURE, MULTILANE, INTERMITTENT OR MOVING OPERATIONS FOR SPEEDS ≤ 40 MPH
701427-02	LANE CLOSURE, MULTILANE, INTERMITTENT OR MOVING OPERATIONS FOR SPEEDS ≥ 45 MPH
701601-09	URBAN LANE CLOSURE, MULTILANE, 1W OR 2W WITH NON TRAVERSABLE MEDIAN
701602-07	URBAN LANE CLOSURE, MULTILANE, 2 WAY WITH BI-DIRECTIONAL LEFT TURN LANE
701701-09	URBAN LANE CLOSURE, MULTILANE INTERSECTION
701901-03	TRAFFIC CONTROL DEVICES
814001-02	HANDHOLES
857001-01	STANDARD PHASE DESIGNATIONS DIAGRAMS AND PHASE SEQUENCES
880006-01	TRAFFIC SIGNAL MOUNTING DETAILS - POST AND BRACKET MOUNTED
886001-01	DETECTOR LOOP INSTALLATIONS
886006-01	TYPICAL LAYOUTS FOR DETECTOR LOOPS

FYA CONTROLLER CABINET MODIFICATION NOTES

1. THE CONTRACTOR SHALL REMOVE THE EXISTING CONTROLLER CABINET TRAFFIC SIGNAL COMPONENTS (CONTROLLERS, CMU, ETC.) AND DELIVER THEM TO THE IDOT TRAFFIC BUILDING, 1025 W. DETWEILLER DR., PEORIA. THE CONTRACTOR SHALL NOTIFY PAUL GRANT, AT (309) 671-4474 FORTY-EIGHT HOURS IN ADVANCE OF EQUIPMENT DELIVERY.
2. THE CONTRACTOR SHALL SCHEDULE THE MODIFICATIONS OF THE THE EXISTING CONTROLLER CABINETS ONLY DURING THE HOURS OF 8:30 AM TO 3:30 PM MONDAY THROUGH FRIDAY.
3. THE CONTRACTOR WILL BE ALLOWED TO PLACE THE INTERSECTION INTO ALL-RED FLASH MODE AND ALL-WAY STOP CONTROL ONLY DURING THE HOURS SPECIFIED ABOVE TO FACILITATE THE INSTALLATION OF THE PROPOSED TRAFFIC SIGNAL HEADS AND PERFORM MODIFICATIONS TO THE EXISTING CONTROLLER CABINETS.
4. THE CONTRACTOR SHALL FURNISH AND INSTALL A MINIMUM OF TWO STOP SIGNS PER APPROACH WHEN THE INTERSECTION IS OPERATING IN ALL-RED FLASH MODE OR ALL-WAY STOP CONTROL. STOP SIGNS SHALL BE DISPLAYED IN ACCORDANCE WITH MUTCD REQUIREMENTS.
5. ALL COSTS (LABOR, MATERIALS, AND EQUIPMENT) ASSOCIATED WITH THESE REQUIREMENTS SHALL BE INCLUDED IN THE CONTRACT BID PRICE FOR THE MODIFY EXISTING CONTROLLER CABINET PAY ITEM. THERE WILL BE NO ADDITIONAL COMPENSATION FOR THIS WORK.

CONSTRUCTION NOTES

1. ANY MAINTENANCE OF EXISTING TRAFFIC SIGNALS WILL BE CONSIDERED EXTRA WORK IN ACCORDANCE WITH ARTICLE 109.04 OF THE STANDARD SPECIFICATIONS.
2. THE LOCATION OF ALL UTILITIES AND PRIVATELY OWNED FACILITIES SHALL BE FIELD VERIFIED BY THE CONTRACTOR PRIOR TO THE INSTALLATION OF ANY COMPONENTS.
3. THE CONTRACTOR SHALL BE RESPONSIBLE FOR LOCATING EXISTING IDOT ELECTRICAL FACILITIES AT HIS/HER OWN EXPENSE IF REQUIRED. THE CONTRACTOR SHALL ALSO BE LIABLE FOR ANY DAMAGE TO IDOT FACILITIES RESULTING FROM INACCURATE LOCATING.
4. ELECTRICAL WORK SHALL CONFORM WITH NATIONAL, STATE, AND LOCAL CODES.
5. ALL TRAFFIC SIGNAL SECTIONS SHALL HAVE 12" SINGLE LED LENSES.
6. THE RED SECTIONS OF THE SIGNAL HEADS SHARING THE SAME MAST ARM SHALL BE LEVEL WITH ONE ANOTHER AND MAINTAIN A 16 FT. MINIMUM CLEARANCE FROM THE HIGHEST POINT OF THE ROADWAY.
7. ALL TRAFFIC SIGNAL HEAD BRACKETS ARE TO BE ALUMINUM WITH A NATURAL FINISH.
8. THE EXISTING TRAFFIC SIGNALS SHALL REMAIN IN OPERATION DURING THE CONSTRUCTION OF THE PROPOSED TRAFFIC SIGNALS.
9. THE CONTRACTOR SHALL PROVIDE ELECTRICAL CABLE SLACK IN ACCORDANCE WITH ARTICLE 873.03.
10. ELECTRICAL CABLE WILL BE MEASURED FOR PAYMENT IN ACCORDANCE WITH ARTICLE 873.04.
11. ALL SURPLUS MATERIALS SHALL BE DISPOSED OF IN ACCORDANCE WITH ARTICLE 202.03 OF THE STANDARD SPECIFICATIONS.
12. REMOVAL OF EXISTING TRAFFIC SIGNAL AND PEDESTRIAN HEADS WILL NOT BE PAID FOR SEPARATELY, BUT SHALL BE INCLUDED IN THE UNIT BID PRICES FOR THE PROPOSED ITEMS.
13. ALL LED MODULES AND BATTERIES SHALL BE RECYCLED AT A CERTIFIED RECYCLING FACILITY. ALL COSTS, INCLUDING RECYCLING AND SHIPPING CHARGES, SHALL BE INCLUDED IN THE PAY ITEMS FOR EACH ITEM. THE CONTRACTOR SHALL SUBMIT SUPPORTING DOCUMENTATION FOR ALL RECYCLING ACTIVITIES.
14. ALL POST TOP MOUNTED TRAFFIC SIGNALS SHALL BE EQUIPPED WITH STIFFENING PLATES.
15. THE CONTRACTOR MAY ELECT TO CHANGE LED MODULES DURING NON-PEAK HOURS AND WEEKENDS, HOWEVER, ALL COSTS ASSOCIATED WITH WORKING DURING THESE TIME PERIODS SHALL BE INCLUDED IN THE BID PRICE FOR THE LED MODULE PAY ITEMS. THERE WILL BE NO ADDITIONAL COMPENSATION FOR SHIFT DIFFERENTIALS AND PREMIUM TIME HOURS.
16. ALL DETECTOR LOOPS SHALL BE INSTALLED IN THE CENTER OF THEIR RESPECTIVE TRAVEL LANES. THE CONTRACTOR SHALL NOTIFY RANDY LANINGA AT (309) 671-4477 TO OBTAIN VERIFICATION OF DETECTOR LOOP LAYOUT PRIOR TO INSTALLATION.
17. THE COST OF DRILLING MEDIANS AND CURBS SHALL BE INCLUDED IN THE UNIT BID PRICE FOR DETECTOR LOOP, TYPE I.
18. THE PROPOSED DETECTOR LOOPS SHALL BE INSTALLED AND FULLY OPERATIONAL PRIOR TO THE REMOVAL OF THE VIDEO DETECTION SYSTEM.
19. THE #18 3-PAIR TWISTED/SHIELDED CABLE SHALL HAVE THE SAME SLACK AS OTHER SIGNAL CABLE AND WILL BE MEASURED FOR PAYMENT.
20. ALL DETECTOR LOOPS SHALL UTILIZE A SEPARATE PAIR OF LEAD-INS AND A TYPE II SPLICE SHALL BE USED FOR ALL DETECTOR LEAD-INS.
21. NO ADDITIONAL COMPENSATION WILL BE ALLOWED FOR PLACING CONDUIT AT GREATER THAN 2 FT. MINIMUM DEPTH TO AVOID OBSTACLES SUCH AS UNDERGROUND UTILITIES.
22. THE CONTRACTOR IS RESPONSIBLE FOR THE COST OF UNCOVERING OR HAND DIGGING AROUND UTILITIES AS NECESSARY. THIS COST OF THIS WORK SHALL BE INCLUDED IN THE UNIT PRICES FOR THE CONDUITS.

FILE NAME :	USER NAME :	DESIGNED :	REVISED :	STATE OF ILLINOIS DEPARTMENT OF TRANSPORTATION	CONSTRUCTION NOTES, HIGHWAY STANDARDS, AND COMMITMENTS	F.A.I.:	SECTION	COUNTY	TOTAL SHEETS	SHEET NO.	
68990 - LEO & SBS Battery Replacement	Final B-29-14.dgn	DRAWN :	REVISED :			VAR.	D4 SIGNAL WORK 2015	VARIOUS	13	2	
	PLOT SCALE : 95.1470 / in.	CHECKED :	REVISED :			CONTRACT NO. 68990					
	PLOT DATE : 8/29/2014	DATE :	REVISED :			ILLINOIS FED. AID PROJECT					
				SCALE:	STA.	TO STA.					

SUMMARY OF QUANTITIES			VARIOUS COUNTY	FULTON COUNTY	HENDERSON COUNTY	KNOX COUNTY	MARSHALL COUNTY	MCDONOUGH COUNTY	MERCER COUNTY	PEORIA COUNTY	TAZEWELL COUNTY																WARREN COUNTY	WOODFORD COUNTY								
PAY ITEM CODE	ITEM DESCRIPTION	UNIT		TOTAL QTY.	1	2	3	4	5	6	7	8	9	10	11	12	13	14	15	16	17	18	19	20	21	22	23	24	25	26	27	28	29	30	31	32
42400100	PORTLAND CEMENT CONCRETE SIDEWALK 4 INCH	SQ FT	80.0											80.0																						
44000600	SIDEWALK REMOVAL	SQ FT	80.0											80.0																						
67100100	MOBILIZATION	L SUM	1.0	0.01	0.04	0.01	0.01	0.01	0.01	0.01	0.01	0.02	0.05	0.04	0.13	0.01	0.03	0.01	0.04	0.01	0.01	0.03	0.03	0.11	0.04	0.14	0.03	0.03	0.01	0.01	0.02	0.02	0.02	0.01	0.04	
72000100	SIGN PANEL - TYPE 1	SQ FT	5.0												5.00																					
81028350	UNDERGROUND CONDUIT, PVC, 2" DIA.	FOOT	581.0											574.0		7.0																				
81400700	HANDHOLE, PORTLAND CEMENT CONCRETE	EACH	2.0											2.0																						
86300400	CONTROLLER CABINET TYPE IV	EACH	1.0																						1.0											
87301515	ELECTRIC CABLE IN CONDUIT, LEAD-IN, NO. 18 3 PAIR	FOOT	1478.0											1318.5		159.5																				
87900100	DRILL EXISTING FOUNDATION	EACH	1.0													1.0																				
87900200	DRILL EXISTING HANDHOLE	EACH	6.0											6.0																						
88030020	SIGNAL HEAD, LED, 1-FACE, 3-SECTION, MAST ARM MOUNTED	EACH	10.0															4.0							6.0											
88030050	SIGNAL HEAD, LED, 1-FACE, 3-SECTION, BRACKET MOUNTED	EACH	2.0															2.0																		
88030070	SIGNAL HEAD, LED, 1-FACE, 4-SECTION, BRACKET MOUNTED	EACH	2.0												2.0																					
88102717	PEDESTRIAN SIGNAL HEAD, LED, 1-FACE, BRACKET MOUNTED WITH COUNTDOWN TIMER	EACH	14.0		2.0									4.0									2.0					2.0				2.0	2.0			
88102747	PEDESTRIAN SIGNAL HEAD, LED, 2-FACE, BRACKET MOUNTED WITH COUNTDOWN TIMER	EACH	23.0		10.0		4.0				4.0	4.0		1.0																						
88200310	TRAFFIC SIGNAL BACKPLATE, LOUVERED, PLASTIC	EACH	12.0												2.0			4.0						6.0												
88500100	INDUCTIVE LOOP DETECTOR	EACH	12.0											9.0				3.0																		
88600100	DETECTOR LOOP, TYPE I	FOOT	1269.0											966.0				303.0																		

- ③ ② ①A ④ ① ② ① ② ⑦ ① ③ ① ④ ⑤ ⑥ ⑦ ⑧ ⑨ ⑩ ⑪ ⑫ ⑬ ⑭ ⑮ ⑯ ⑰ ⑱ ⑲ ⑳ ㉑ ㉒ ㉓ ㉔ ㉕ ㉖ ㉗ ㉘ ㉙ ㉚ ㉛ ㉜ ㉝ ㉞ ㉟ ㊱ ㊲ ㊳ ㊴ ㊵ ㊶ ㊷ ㊸ ㊹ ㊺

FULTON COUNTY		HENDERSON COUNTY	KNOX COUNTY	MARSHALL COUNTY		MCDONOUGH COUNTY		MERCER COUNTY	PEORIA COUNTY		TAZEWELL COUNTY																WARREN COUNTY		WOODFORD COUNTY		
1	2	3	4	5	6	7	8	9	10	11	12	13	14	15	16	17	18	19	20	21	22	23	24	25	26	27	28	29	30	31	32
CONST. TYPE CODE 0021 93.3% STATE 8.7% CITY (CANTON) URBAN (1 LOCATION)	CONST. TYPE CODE 0021 90% STATE 10% CITY (CANTON) URBAN (3 LOCATIONS)	CONST. TYPE CODE 0021 100% STATE 9% CITY RURAL (1 LOCATION)	CONST. TYPE CODE 0021 90% STATE 10% CITY (ABINGDON) URBAN (1 LOCATION)	CONST. TYPE CODE 0021 100% STATE 0% CITY (LACON) URBAN (1 LOCATION)	CONST. TYPE CODE 0021 90% STATE 10% CITY (LACON) URBAN (1 LOCATION)	CONST. TYPE CODE 0021 100% STATE 0% CITY (LACON) URBAN (1 LOCATION)	CONST. TYPE CODE 0021 95% STATE 5% CITY (ALEDO) URBAN (1 LOCATION)	CONST. TYPE CODE 0021 100% STATE 0% CITY (ALEDO) URBAN (2 LOCATIONS)	CONST. TYPE CODE 0021 100% STATE 0% CITY (ALEDO) URBAN (4 LOCATIONS)	CONST. TYPE CODE 0021 90% STATE 10% CITY (CHILLICOTHE) URBAN (3 LOCATIONS)	CONST. TYPE CODE 0021 100% STATE 0% CITY (CREVE COEUR, EAST PEORIA, N. PEKIN, PEKIN, WASHINGTON) URBAN (11 LOCATIONS)	CONST. TYPE CODE 0021 95% STATE 5% CITY (EAST PEORIA) URBAN (1 LOCATION)	CONST. TYPE CODE 0021 95% STATE 5% CITY (PEKIN) URBAN (2 LOCATIONS)	CONST. TYPE CODE 0021 93.3% STATE 6.7% CITY (GREVE COEUR) URBAN (1 LOCATION)	CONST. TYPE CODE 0021 93.3% STATE 6.7% CITY (EAST PEORIA) URBAN (3 LOCATIONS)	CONST. TYPE CODE 0021 93.3% STATE 6.7% CITY (NARQUETTE HEIGHTS) URBAN (1 LOCATION)	CONST. TYPE CODE 0021 93.3% STATE 6.7% CITY (NORTH PEKIN) URBAN (1 LOCATION)	CONST. TYPE CODE 0021 93.3% STATE 6.7% CITY (PEKIN) URBAN (2 LOCATIONS)	CONST. TYPE CODE 0021 90% STATE 10% CITY (GREVE COEUR) URBAN (2 LOCATIONS)	CONST. TYPE CODE 0021 80% STATE 20% CITY (EAST PEORIA) URBAN (10 LOCATIONS)	CONST. TYPE CODE 0021 90% STATE 10% CITY (EAST PEORIA) URBAN (3 LOCATIONS)	CONST. TYPE CODE 0021 80% STATE 20% CITY (WASHINGTON) URBAN (12 LOCATIONS)	CONST. TYPE CODE 0021 80% STATE 20% CITY (WASHINGTON) URBAN (2 LOCATIONS)	CONST. TYPE CODE 0021 80% STATE 20% CITY (WASHINGTON) URBAN (2 LOCATIONS)	CONST. TYPE CODE 0021 80% STATE 20% CITY (WASHINGTON) URBAN (1 LOCATION)	CONST. TYPE CODE 0021 80% STATE 20% CITY (WASHINGTON) URBAN (1 LOCATION)	CONST. TYPE CODE 0021 85% STATE 15% CITY (MONMOUTH) URBAN (2 LOCATIONS)	CONST. TYPE CODE 0021 90% STATE 10% CITY (MONMOUTH) URBAN (3 LOCATIONS)	CONST. TYPE CODE 0021 100% STATE 0% CITY (EUREKA, GOODFIELD) URBAN (2 LOCATIONS)	CONST. TYPE CODE 0021 93.3% STATE 6.7% CITY (EUREKA) URBAN (1 LOCATION)	CONST. TYPE CODE 0021 90% STATE 10% CITY (BERMANTON HILLS) URBAN (3 LOCATIONS)

FULTON COUNTY	% OF MAINTENANCE RESPONSIBILITY			SOLID INDICATIONS (LED REPLACEMENT)			ARROW INDICATIONS (LED REPLACEMENT)				PEDESTRIAN INDICATIONS (LED REPLACEMENT)			TRAFFIC SIGNAL AND PEDESTRIAN HEAD REPLACEMENT				REPLACE BBS BATTERIES
	DEPARTMENT	LOCAL AGENCY	FUND CODE STATE/CITY	RED	YELLOW	GREEN	RED	YELLOW	GREEN	YELLOW/GREEN	12" WALKING MAN/HAND	12" COUNTDOWN TIMER	16" WALKING MAN/HAND WITH TIMER	3 SECTION HEAD (MAM)	3 SECTION HEAD (BM)	PED HEAD, 1-FACE, BM, W/ CT	PED HEAD, 2-FACE, BM, W/ CT	
CANTON																		
IL 78 (MAIN) & ASH	50	50	90/10	8	8	8												4
IL 78 (MAIN) & VINE	50	50	90/10	8	8	8												4
IL 78 (MAIN) & SYCAMORE TERRACE	50	50	90/10	8	8	8										2	2	
IL 78 (MAIN) & LINCOLN	67	33	93.3/6.7	6	6	6							4					
TOTALS				30	30	30	0	0	0	0	0	0	4	0	0	2	10	0

HENDERSON COUNTY	% OF MAINTENANCE RESPONSIBILITY			SOLID INDICATIONS (LED REPLACEMENT)			ARROW INDICATIONS (LED REPLACEMENT)				PEDESTRIAN INDICATIONS (LED REPLACEMENT)			TRAFFIC SIGNAL AND PEDESTRIAN HEAD REPLACEMENT				REPLACE BBS BATTERIES
	DEPARTMENT	LOCAL AGENCY	FUND CODE STATE/CITY	RED	YELLOW	GREEN	RED	YELLOW	GREEN	YELLOW/GREEN	12" WALKING MAN/HAND	12" COUNTDOWN TIMER	16" WALKING MAN/HAND WITH TIMER	3 SECTION HEAD (MAM)	3 SECTION HEAD (BM)	PED HEAD, 1-FACE, BM, W/ CT	PED HEAD, 2-FACE, BM, W/ CT	
US 34 & CARMAN	100	0	100/0	11	15	11	4	5	5									
TOTALS				11	15	11	4	5	5	0	0	0	0			0	0	1

KNOX COUNTY	% OF MAINTENANCE RESPONSIBILITY			SOLID INDICATIONS (LED REPLACEMENT)			ARROW INDICATIONS (LED REPLACEMENT)				PEDESTRIAN INDICATIONS (LED REPLACEMENT)			TRAFFIC SIGNAL AND PEDESTRIAN HEAD REPLACEMENT				REPLACE BBS BATTERIES
	DEPARTMENT	LOCAL AGENCY	FUND CODE STATE/CITY	RED	YELLOW	GREEN	RED	YELLOW	GREEN	YELLOW/GREEN	12" WALKING MAN/HAND	12" COUNTDOWN TIMER	16" WALKING MAN/HAND WITH TIMER	3 SECTION HEAD (MAM)	3 SECTION HEAD (BM)	PED HEAD, 1-FACE, BM, W/ CT	PED HEAD, 2-FACE, BM, W/ CT	
ABINGDON																		
IL 41 & MONROE / LATIMER	50	50	90/10	8	8	8												4
TOTALS				8	8	8	0	0	0	0	0	0	0	0	0	0	4	0

MARSHALL COUNTY	% OF MAINTENANCE RESPONSIBILITY			SOLID INDICATIONS (LED REPLACEMENT)			ARROW INDICATIONS (LED REPLACEMENT)				PEDESTRIAN INDICATIONS (LED REPLACEMENT)			TRAFFIC SIGNAL AND PEDESTRIAN HEAD REPLACEMENT				REPLACE BBS BATTERIES
	DEPARTMENT	LOCAL AGENCY	FUND CODE STATE/CITY	RED	YELLOW	GREEN	RED	YELLOW	GREEN	YELLOW/GREEN	12" WALKING MAN/HAND	12" COUNTDOWN TIMER	16" WALKING MAN/HAND WITH TIMER	3 SECTION HEAD (MAM)	3 SECTION HEAD (BM)	PED HEAD, 1-FACE, BM, W/ CT	PED HEAD, 2-FACE, BM, W/ CT	
LACON																		
IL 17 (FIFTH) & IL 26 (PRAIRIE)	100	0	100/0	8	8	8					8	8						
IL 17 (FIFTH) & HIGH ST	50	50	90/10	8	8	8					8	8						
TOTALS				16	16	16	0	0	0	0	16	16	0	0	0	0	0	0

MCDONOUGH COUNTY	% OF MAINTENANCE RESPONSIBILITY			SOLID INDICATIONS (LED REPLACEMENT)			ARROW INDICATIONS (LED REPLACEMENT)				PEDESTRIAN INDICATIONS (LED REPLACEMENT)			TRAFFIC SIGNAL AND PEDESTRIAN HEAD REPLACEMENT				REPLACE BBS BATTERIES
	DEPARTMENT	LOCAL AGENCY	FUND CODE STATE/CITY	RED	YELLOW	GREEN	RED	YELLOW	GREEN	YELLOW/GREEN	12" WALKING MAN/HAND	12" COUNTDOWN TIMER	16" WALKING MAN/HAND WITH TIMER	3 SECTION HEAD (MAM)	3 SECTION HEAD (BM)	PED HEAD, 1-FACE, BM, W/ CT	PED HEAD, 2-FACE, BM, W/ CT	
GOOD HOPE																		
US 67 & MAIN	50	50	90/10	8	8	8												4
MCDONOUGH COUNTY																		
US 67 & IL 9	100	0	100/0	8	8	8												
TOTALS				16	16	16	0	0	0	0	0	0	0	0	0	0	4	0

MERCER COUNTY	% OF MAINTENANCE RESPONSIBILITY			SOLID INDICATIONS (LED REPLACEMENT)			ARROW INDICATIONS (LED REPLACEMENT)				PEDESTRIAN INDICATIONS (LED REPLACEMENT)			TRAFFIC SIGNAL AND PEDESTRIAN HEAD REPLACEMENT				REPLACE BBS BATTERIES
	DEPARTMENT	LOCAL AGENCY	FUND CODE STATE/CITY	RED	YELLOW	GREEN	RED	YELLOW	GREEN	YELLOW/GREEN	12" WALKING MAN/HAND	12" COUNTDOWN TIMER	16" WALKING MAN/HAND WITH TIMER	3 SECTION HEAD (MAM)	3 SECTION HEAD (BM)	PED HEAD, 1-FACE, BM, W/ CT	PED HEAD, 2-FACE, BM, W/ CT	
ALEDO																		
IL 94 & IL 117/WARMART ENTRANCE	75	25	95/5	8	8	8			4									
IL 94 (COLLEGE) & IL 17 (3RD)	75	25	95/5	7	7	7				2							4	
TOTALS				15	15	15	0	0	4	2	0	0	0	0	0	0	4	0

PEORIA COUNTY	% OF MAINTENANCE RESPONSIBILITY			SOLID INDICATIONS (LED REPLACEMENT)			ARROW INDICATIONS (LED REPLACEMENT)				PEDESTRIAN INDICATIONS (LED REPLACEMENT)			TRAFFIC SIGNAL AND PEDESTRIAN HEAD REPLACEMENT				REPLACE BBS BATTERIES
	DEPARTMENT	LOCAL AGENCY	FUND CODE STATE/CITY	RED	YELLOW	GREEN	RED	YELLOW	GREEN	YELLOW/GREEN	12" WALKING MAN/HAND	12" COUNTDOWN TIMER	16" WALKING MAN/HAND WITH TIMER	3 SECTION HEAD (MAM)	3 SECTION HEAD (BM)	PED HEAD, 1-FACE, BM, W/ CT	PED HEAD, 2-FACE, BM, W/ CT	
BARTONVILLE																		
US 24 (ADAMS) & I 474 EB RAMPS	100	0	100/0	9	9	6			3		2	2						
CHILLICOTHE																		
IL 29 (FOURTH) & CLOVERDALE	50	50	90/10	7	7	7					4	4						
IL 29 (FOURTH) & WALNUT	50	50	90/10	6	6	6							8					
IL 29 (FOURTH) & TRUITT	50	50	90/10	11	11	11		2	7							4	1	
PEORIA COUNTY																		
IL 8 (FARMINGTON) & SOUTHPORT	100	0	100/0	7	7	6			1									
IL 6 & IL 29	100	0	100/0	9	9	9	2	4	7									1
IL 6 & STATE	100	0	100/0	11	11	11		3	5									1
TOTALS				60	60	56	2	9	23	0	6	6	8	0	0	4	1	2

TAZEWELL COUNTY	% OF MAINTENANCE RESPONSIBILITY			SOLID INDICATIONS (LED REPLACEMENT)			ARROW INDICATIONS (LED REPLACEMENT)				PEDESTRIAN INDICATIONS (LED REPLACEMENT)			TRAFFIC SIGNAL AND PEDESTRIAN HEAD REPLACEMENT				REPLACE BBS BATTERIES
	DEPARTMENT	LOCAL AGENCY	FUND CODE STATE/CITY	RED	YELLOW	GREEN	RED	YELLOW	GREEN	YELLOW/GREEN	12" WALKING MAN/HAND	12" COUNTDOWN TIMER	16" WALKING MAN/HAND WITH TIMER	3 SECTION HEAD (MAM)	3 SECTION HEAD (BM)	PED HEAD, 1-FACE, BM, W/ CT	PED HEAD, 2-FACE, BM, W/ CT	
CREVE COEUR																		
IL 29 (MAIN) & HIGHLAND / RUSCHE	50	50	90/10	9	9	9				2						2		
IL 29 & I-474 RAMPS A&D	100	0	100/0															1
IL 29 (MAIN) & FISCHER	50	50	90/10	8	8	8												
IL 29 (MAIN) & WESLEY	67	33	93.3/6.7											4	2			
EAST PEORIA																		
US 24 (MCCLUGAGE) & ICC ENTRANCE	50	50	90/10	11	11	11	4	4	4									1
US 150 (MEADOWS) & IL 8 (WASHINGTON)	75	25	95/5	9	9	9		1	3				8					
IL 116 (MAIN) & MARINERS WAY/ACCESS RD 6	50	50	90/10	8	8	8	4	4	4									1
IL 116 (MAIN) & ACCESS RD 7	67	33	93.3/6.7	9	9	9												1
IL 116 (MAIN) & BLACKJACK	0	100	80/20	11	11	11	4	5	5	1						2		1
IL 116 (MAIN) & CENTENNIAL **	67	33	93.3/6.7	7	7	5		1	5									1
IL 116 (MAIN) & HIGHVIEW	50	50	90/10	8	8	8	4	4	4									1
IL 8 (WASHINGTON) & CARVER/JAY	50	50	90/10	10	10	8					8	8						
IL 8 (WASHINGTON) & DOLANS	67	33	93.3/6.7	7	7	4					4	4						
IL 8 (WASHINGTON) & ILLINI/FARMDALE	50	50	90/10	9	9	9					8	8						
IL 8 (WASHINGTON) & ROSEDALE / PUTNAM	50	50	90/10	8	8	8					8	8						

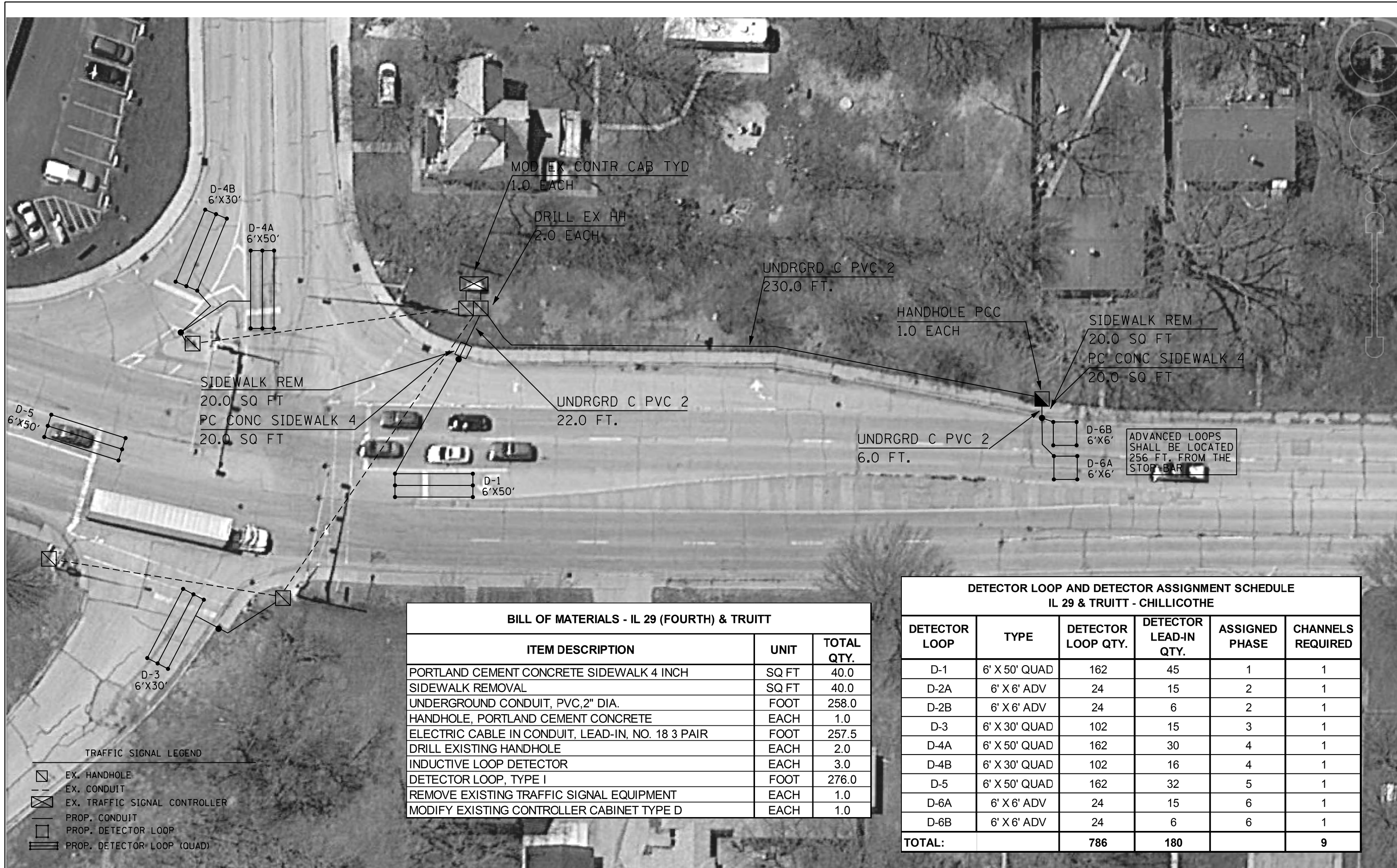
** INTERSECTION OF IL 116 (MAIN) & CENTENNIAL: LED QUANTITIES INCLUDE OPTICALLY PROGRAMMED SIGNAL HEAD LED RETROFITS (TWO RED ARROW, TWO YELLOW ARROW, AND FOUR GREEN ARROW INDICATIONS)

TAZEWELL COUNTY (CONTINUED)	% OF MAINTENANCE RESPONSIBILITY			SOLID INDICATIONS (LED REPLACEMENT)			ARROW INDICATIONS (LED REPLACEMENT)				PEDESTRIAN INDICATIONS (LED REPLACEMENT)			TRAFFIC SIGNAL AND PEDESTRIAN HEAD REPLACEMENT				REPLACE BBS BATTERIES
	DEPARTMENT	LOCAL AGENCY	FUND CODE STATE/CITY	RED	YELLOW	GREEN	RED	YELLOW	GREEN	YELLOW/GREEN	12" WALKING MAN/HAND	12" COUNTDOWN TIMER	16" WALKING MAN/HAND WITH TIMER	3 SECTION HEAD (MAM)	3 SECTION HEAD (BM)	PED HEAD, 1-FACE, BM, W/ CT	PED HEAD, 2-FACE, BM, W/ CT	
EAST PEORIA (CONTINUED)																		
IL 116 (MAIN) & SPRINGFIELD / SHOPPING CTR	50	50	90/10	9	9	9		1	1		8	8						
IL 116 (MAIN) & WASHINGTON	50	50	90/10	9	9	9		1	1			8						1
IL 116 (MAIN) & GOLD	0	100	80/20	8	8	8					2	2						
UNMARKED (WASHINGTON) & VETERANS	50	50	90/10															
I-74 RAMPS I-3/I-4 & CAMP	100	0	100/0															
IL 40 (WASHINGTON) & RIVER	50	50	90/10	10	10	10	8	10	10			6						1
IL 116 (MAIN) & I-74 EB RAMPS	100	0	100/0															1
IL 116 (MAIN) & I-74 WB RAMPS	100	0	100/0															1
MARQUETTE HEIGHTS																		
IL 29 & LASALLE	67	33	93.3/6.7	9	9	9				1								
MORTON																		
US 150 (JACKSON) & DETROIT	50	50	90/10	7	7	7		1	1		2	2						
US 150 (JACKSON) & VETERANS	50	50	90/10	4	4	4						4						1
IL 98 (BIRCHWOOD) & DETROIT	50	50	90/10	8	8	8												
NORTH PEKIN																		
IL 29 & IL 98 (EDGEWATER)	100	0	100/0	5	5	5		1	3									
IL 98 (EDGEWATER) & MAIN	67	33	93.3/6.7	7	7	5		2	5									
PEKIN																		
IL 9 / IL 29 (ANN ELIZA) & IL 29 (SECOND)	100	0	100/0	4	4	4						2						
IL 9 (BROADWAY) & EIGHTH	50	50	90/10	7	7	7						8						
IL 9 (COURT) & ALLENTOWN	67	33	93.3/6.7	9	9	9		1	1									
IL 9 (COURT) & BARNEY	50	50	90/10	11	11	11		1	5									
IL 9 (COURT) & EIGHTH	75	25	95/5	6	6	6						6						
IL 9 (COURT) & FOURTEENTH	50	50	90/10	6	6	6				8	8							
IL 9 (COURT) & PARKWAY / SUNSET	50	50	90/10	7	7	7			4			2						
IL 9 (COURT) & TENTH	0	100	80/20	8	8	8						8						
IL 9 (COURT) & VALLE VISTA	50	50	90/10	6	6	6												
IL 9 (COURT) & VETERANS	50	50	90/10	8	8	8												
IL 9 (MARGARET) & BROADWAY / COURT	50	50	90/10									8	6					
IL 9 (MARGARET) & FIFTH	75	25	95/5	5	5	5				8	8							
IL 9 (MARGARET) & SECOND	100	0	100/0	4	4	4						8						
IL 9 / IL 29 (MARGARET) & CAPITOL	50	50	90/10	7	7	7						8						
IL 9 / IL 29 (MARGARET) & FOURTH	50	50	90/10	7	7	7						8						
IL 29 (EIGHTH) & SHERIDAN	50	50	90/10	7	7	7		1	1			8						
IL 29 (SECOND) & DERBY	67	33	93.3/6.7	6	6	6												
IL 29 (SECOND) & KOCH	50	50	90/10	13	13	13			2									
IL 29 (SECOND) & MANITO / FED PRISON	50	50	90/10	8	8	8		1	5									
WASHINGTON																		
US 24 (BOYD) & CUMMINGS	100	0	100/0															1
IL 8 & FREEDOM/CENTENNIAL	0	100	0/100	14	14	10	4	6	12									
BUSINESS US 24 (WASHINGTON) & CUMMINS	50	50	90/10	10	10	6			4		8	8						
BUSINESS US 24 (WASHINGTON) & WILMOR	50	50	90/10	8	8	8						8						

TAZEWELL COUNTY (CONTINUED)	% OF MAINTENANCE RESPONSIBILITY			SOLID INDICATIONS (LED REPLACEMENT)			ARROW INDICATIONS (LED REPLACEMENT)				PEDESTRIAN INDICATIONS (LED REPLACEMENT)			TRAFFIC SIGNAL AND PEDESTRIAN HEAD REPLACEMENT				REPLACE BBS BATTERIES
	DEPARTMENT	LOCAL AGENCY	FUND CODE STATE/CITY	RED	YELLOW	GREEN	RED	YELLOW	GREEN	YELLOW/GREEN	12" WALKING MAN/HAND	12" COUNTDOWN TIMER	16" WALKING MAN/HAND WITH TIMER	3 SECTION HEAD (MAM)	3 SECTION HEAD (BM)	PED HEAD, 1-FACE, BM, W/ CT	PED HEAD, 2-FACE, BM, W/ CT	
TAZEWELL COUNTY																		
US 24 & GRANGE	100	0	100/0															1
US 24 (BOYD) & N MAIN	100	0	100/0	10	10	10	8	8	8									1
IL 116 (MAIN) & ACCESS RD. 8	100	0	100/0	9	9	8			2									1
TOTALS				378	378	360	36	53	97	4	64	64	100	12	2	4	0	16

WARREN COUNTY	% OF MAINTENANCE RESPONSIBILITY			SOLID INDICATIONS (LED REPLACEMENT)			ARROW INDICATIONS (LED REPLACEMENT)				PEDESTRIAN INDICATIONS (LED REPLACEMENT)			TRAFFIC SIGNAL AND PEDESTRIAN HEAD REPLACEMENT				REPLACE BBS BATTERIES
	DEPARTMENT	LOCAL AGENCY	FUND CODE STATE/CITY	RED	YELLOW	GREEN	RED	YELLOW	GREEN	YELLOW/GREEN	12" WALKING MAN/HAND	12" COUNTDOWN TIMER	16" WALKING MAN/HAND WITH TIMER	3 SECTION HEAD (MAM)	3 SECTION HEAD (BM)	PED HEAD, 1-FACE, BM, W/ CT	PED HEAD, 2-FACE, BM, W/ CT	
MONMOUTH																		
US 34 / IL 164 & US 67 (MAIN)	75	25	95/5	10	10	10	8	8	8									1
US 34 / IL 164 & US 67 (SIXTH)	50	50	90/10	8	8	8	8	8	8							2		
US 34 & ELEVENTH	50	50	90/10	10	10	10	4	4	4									1
US 34 / US 67 & IL 164 (BROADWAY)	75	25	95/5	10	10	10	4	4	4							2		
TOTALS				38	38	38	24	24	24	0	0	0	0	0	0	4	0	2

WOODFORD COUNTY	% OF MAINTENANCE RESPONSIBILITY			SOLID INDICATIONS (LED REPLACEMENT)			ARROW INDICATIONS (LED REPLACEMENT)				PEDESTRIAN INDICATIONS (LED REPLACEMENT)			TRAFFIC SIGNAL AND PEDESTRIAN HEAD REPLACEMENT				REPLACE BBS BATTERIES
	DEPARTMENT	LOCAL AGENCY	FUND CODE STATE/CITY	RED	YELLOW	GREEN	RED	YELLOW	GREEN	YELLOW/GREEN	12" WALKING MAN/HAND	12" COUNTDOWN TIMER	16" WALKING MAN/HAND WITH TIMER	3 SECTION HEAD (MAM)	3 SECTION HEAD (BM)	PED HEAD, 1-FACE, BM, W/ CT	PED HEAD, 2-FACE, BM, W/ CT	
EUREKA																		
US 24 & CENTER	100	0	100/0	6	6	6		2	2									
IL 117 (MAIN) & LAKE	67	33	93.3/6.7	5	5	5												
GERMANTOWN HILLS																		
IL 116 & FANDEL	50	50	90/10		8						4	4						1
IL 116 & SCHMITT	50	50	90/10		8						2	2						1
IL 116 & WOODLAND KNOLLS	50	50	90/10		8						2	2						1
GOODFIELD																		
US 150 & IL 117	100	0	100/0	4	4	4												
TOTALS				15	39	15	0	2	2	0	8	8	0	0	0	0	0	3



BILL OF MATERIALS - IL 29 (FOURTH) & TRUITT		
ITEM DESCRIPTION	UNIT	TOTAL QTY.
PORTLAND CEMENT CONCRETE SIDEWALK 4 INCH	SQ FT	40.0
SIDEWALK REMOVAL	SQ FT	40.0
UNDERGROUND CONDUIT, PVC, 2" DIA.	FOOT	316.0
HANDHOLE, PORTLAND CEMENT CONCRETE	EACH	1.0
ELECTRIC CABLE IN CONDUIT, LEAD-IN, NO. 18 3 PAIR	FOOT	1061.0
DRILL EXISTING HANDHOLE	EACH	4.0
INDUCTIVE LOOP DETECTOR	EACH	6.0
DETECTOR LOOP, TYPE I	FOOT	690.0



- TRAFFIC SIGNAL LEGEND
- EX. HANDHOLE
 - EX. CONDUIT
 - EX. TRAFFIC SIGNAL CONTROLLER
 - PROP. CONDUIT
 - PROP. DETECTOR LOOP
 - PROP. DETECTOR LOOP (QUAD)

FILE NAME = 68B90 - LED & BBS Battery Replacement	USER NAME = keathbr	DESIGNED -	REVISED -
	Final 8-29-14.dgn	DRAWN -	REVISED -
	PLOT SCALE = 95.1470' / in.	CHECKED -	REVISED -
	PLOT DATE = 8/29/2014	DATE -	REVISED -

**STATE OF ILLINOIS
DEPARTMENT OF TRANSPORTATION**

DETECTOR LOOP INSTALLATION (IL 29 (FOURTH) & TRUITT - CHILlicoTHE)	
SCALE:	STA. TO STA.

F.A.I. RTÉ.	SECTION	COUNTY	TOTAL SHEETS	SHEET NO.
VAR.	D4 SIGNAL WORK 2015	VARIOUS	13	10
CONTRACT NO. 68B90				
ILLINOIS FED. AID PROJECT				

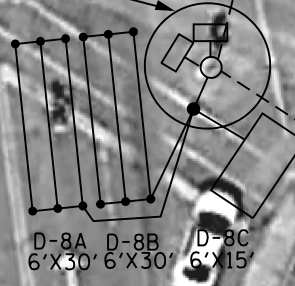
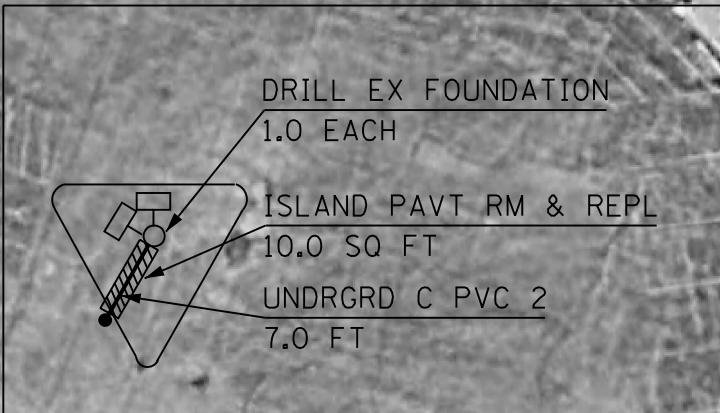


**DETECTOR LOOP AND DETECTOR ASSIGNMENT SCHEDULE
IL 9 (COURT) & EIGHTH - PEKIN**

DETECTOR LOOP	TYPE	DETECTOR LOOP QTY.	DETECTOR LEAD-IN QTY.	ASSIGNED PHASE	CHANNELS REQUIRED
D-8A	6' X 30' QUAD	102	30	8	1
D-8B	6' X 30' QUAD	102	15	8	1
D-8C	6' X 15'	42	12	8	1
TOTAL:		246	57		3

BILL OF MATERIALS - IL 9 (COURT) & EIGHTH

ITEM DESCRIPTION	UNIT	TOTAL QTY.
ISLAND PAVEMENT REMOVAL AND REPLACEMENT	SQ FT	10.0
UNDERGROUND CONDUIT, PVC, 2" DIA.	FOOT	7.0
ELECTRIC CABLE IN CONDUIT, LEAD-IN, NO. 18 3 PAIR	FOOT	159.5
DRILL EXISTING FOUNDATION	EACH	1.0
INDUCTIVE LOOP DETECTOR	EACH	3.0
DETECTOR LOOP, TYPE I	FOOT	303.0
MODIFY EXISTING CONTROLLER CABINET, SPECIAL	EACH	1.0



TRAFFIC SIGNAL LEGEND

	EX. HANDHOLE
	EX. CONDUIT
	EX. TRAFFIC SIGNAL CONTROLLER
	PROP. CONDUIT
	PROP. DETECTOR LOOP
	PROP. DETECTOR LOOP (QUAD)

FILE NAME = 68B90 - LED & BBS Battery Replacement	USER NAME = keithbr Final 8-29-14.dgn	DESIGNED - DRAWN -	REVISED - REVISED -
	PLOT SCALE = 95.1478' / in.	CHECKED -	REVISED -
	PLOT DATE = 8/29/2014	DATE -	REVISED -

**STATE OF ILLINOIS
DEPARTMENT OF TRANSPORTATION**

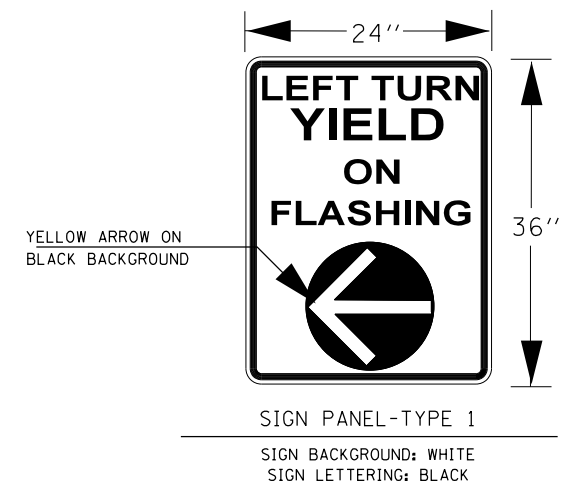
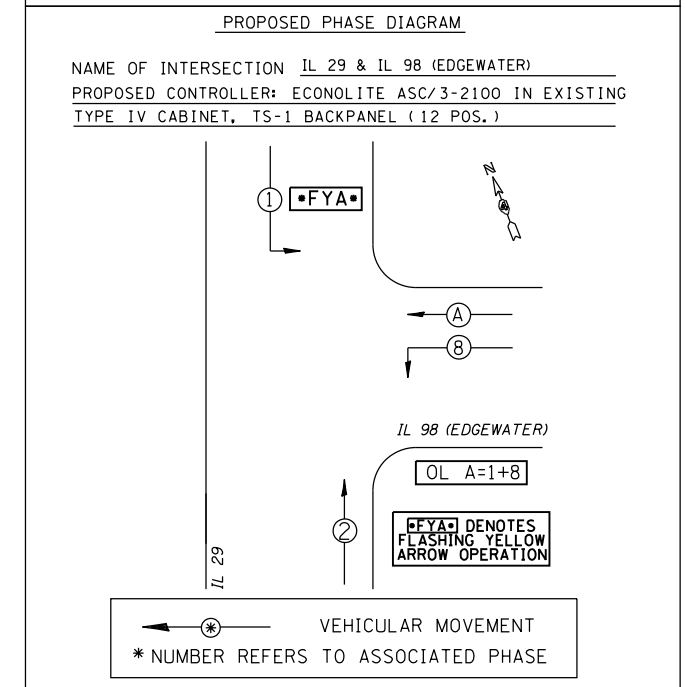
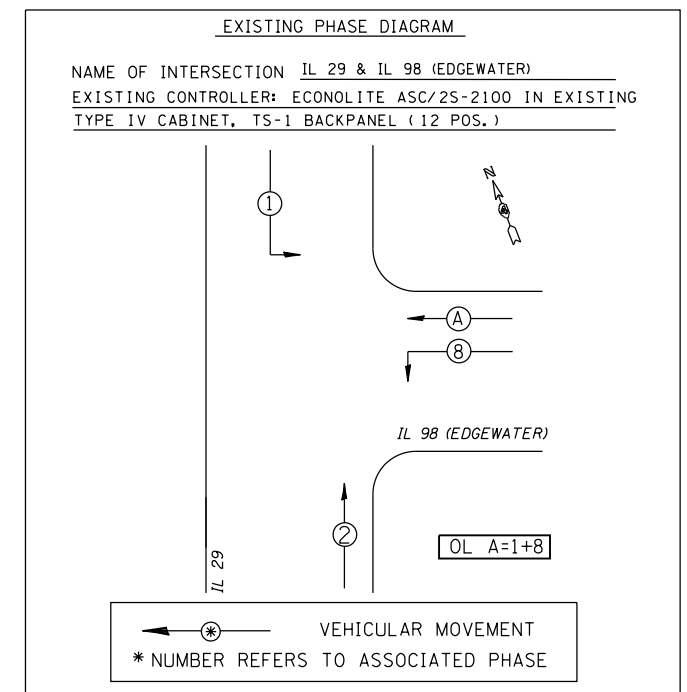
**PROPOSED DETECTOR LOOP INSTALLATION
(IL 9 (COURT) & EIGHTH - PEKIN)**

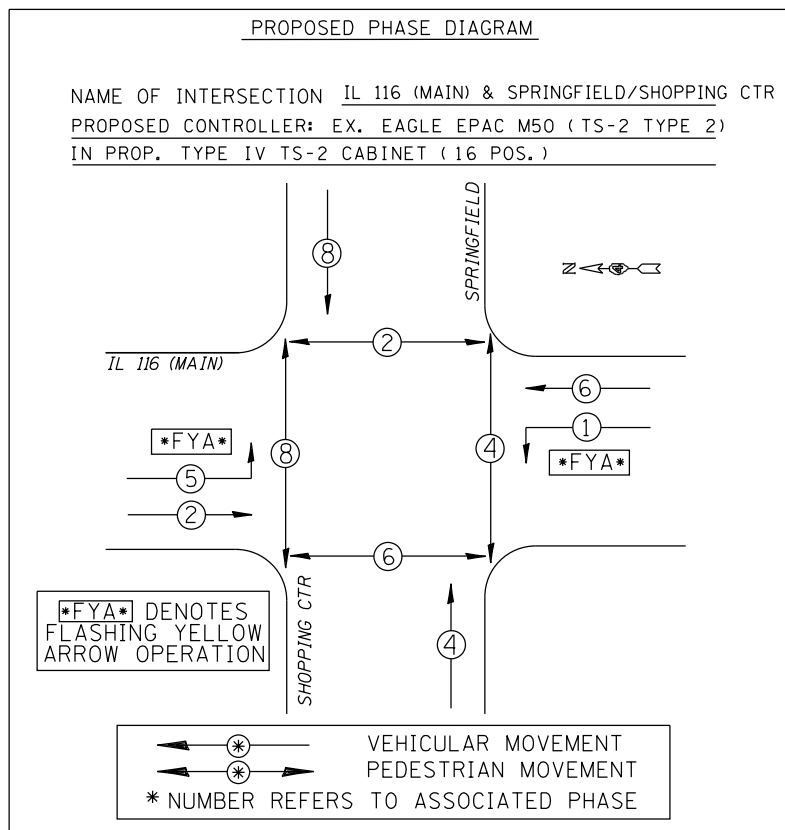
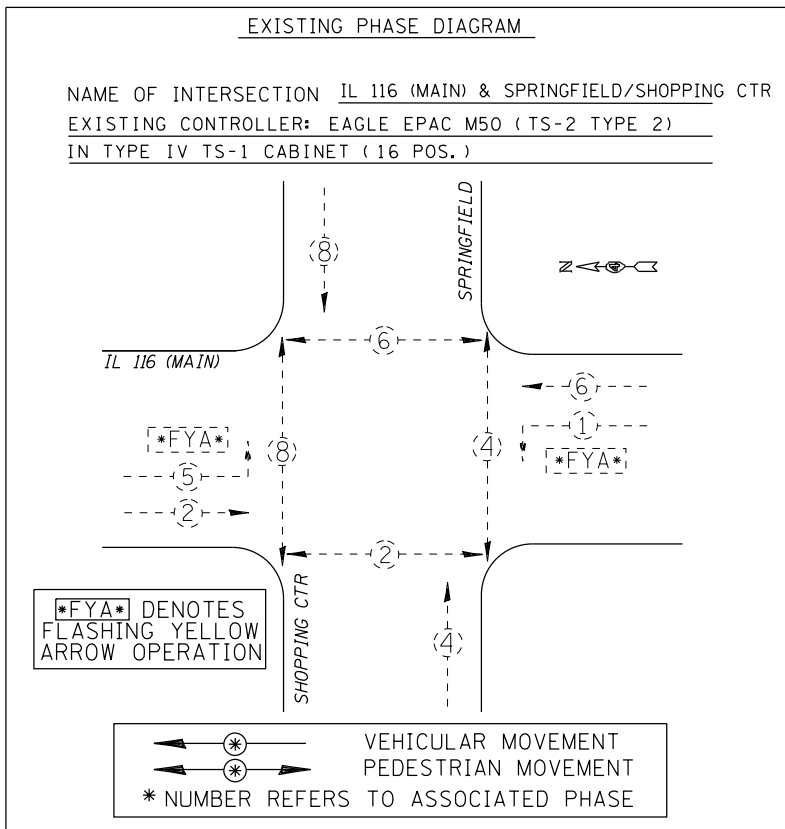
SCALE: _____ STA. _____ TO STA. _____

F.A.I. RTE.	SECTION	COUNTY	TOTAL SHEETS	SHEET NO.
VAR.	D4 SIGNAL WORK 2015	VARIOUS	13	11
CONTRACT NO. 68B90				
ILLINOIS FED. AID PROJECT				



BILL OF MATERIALS - IL 29 & IL 98 (EDGEWATER)		
ITEM DESCRIPTION	UNIT	TOTAL QTY.
SIGN PANEL - TYPE 1	SQ FT	5.0
SIGNAL HEAD, LED, 1-FACE, 4-SECTION, BRACKET MOUNTED	EACH	2.0
TRAFFIC SIGNAL BACKPLATE, LOUVERED, PLASTIC	EACH	2.0
MODIFY EXISTING CONTROLLER CABINET	EACH	1.0





BILL OF MATERIALS - IL 116 (MAIN) & SPRINGFIELD/SHOPPING CTR

ITEM DESCRIPTION	UNIT	TOTAL QTY.
CONTROLLER CABINET TYPE IV	EACH	1.0