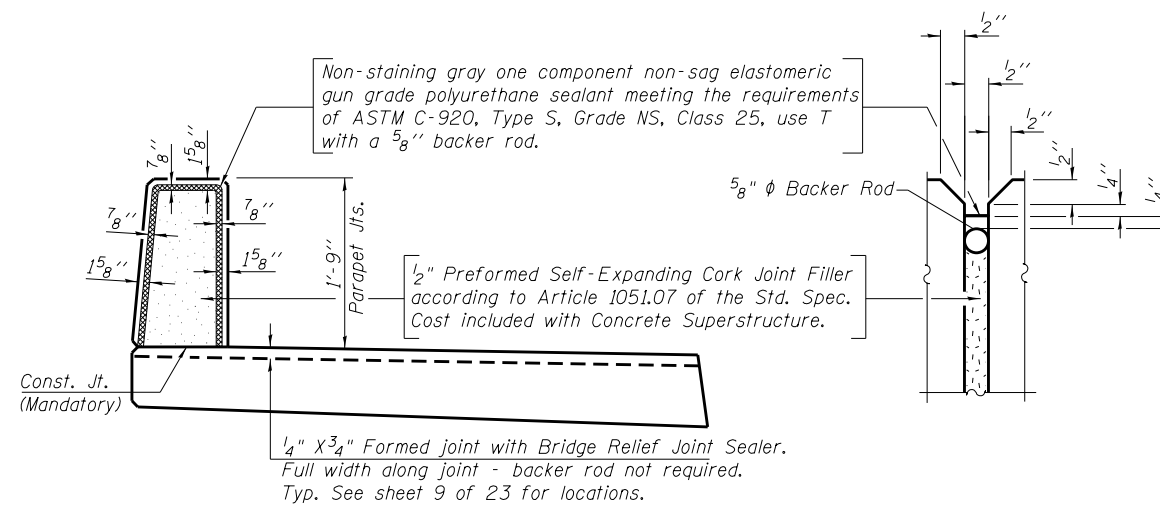


SECTION THRU PARAPET

INSIDE ELEVATION OF PARAPET

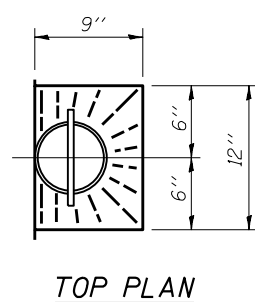
Note: See sheet 16 of 23 for Rail Post spacing.



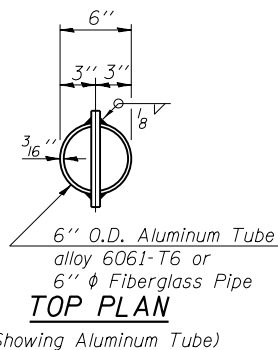
PARAPET JOINT DETAILS

SUPERSTRUCTURE BILL OF MATERIAL

Bar	No.	Size	Length	Shape
d(E)	197	#5	20'-0"	—
a ₁ (E)	197	#5	25'-0"	—
a ₂ (E)	12	#5	20'-3"	—
a ₃ (E)	12	#5	25'-4"	—
a ₄ (E)	132	#6	6'-6"	—
b(E)	140	#5	17'-7"	—
b ₁ (E)	140	#9	25'-4"	—
b ₂ (E)	136	#9	12'-10"	—
b ₃ (E)	104	#9	33'-8"	—
b ₄ (E)	52	#9	46'-7"	—
b ₅ (E)	100	#9	21'-1"	—
b ₆ (E)	50	#9	23'-6"	—
b ₇ (E)	48	#5	34'-5"	—
b ₈ (E)	70	#5	23'-8"	—
c(E)	198	#5	2'-4"	—
c ₁ (E)	198	#5	5'-6"	—
d ₁ (E)	198	#4	4'-4"	L
d ₁ (E)	198	#6	4'-6"	L
d ₂ (E)	48	#4	2'-0"	n
e(E)	48	#4	14'-3"	—
e ₁ (E)	24	#4	19'-8"	—
s(E)	394	#5	8'-2"	□
s ₁ (E)	394	#5	8'-1"	□
s ₂ (E)	788	#5	7'-9"	□
s ₃ (E)	92	#5	6'-5"	—
s ₄ (E)	92	#5	8'-1"	—
Reinforcement Bars, Epoxy Coated		Pound		85,220
Concrete Superstructure		Cu. Yds.		297.7

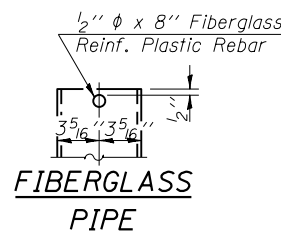


TOP PLAN

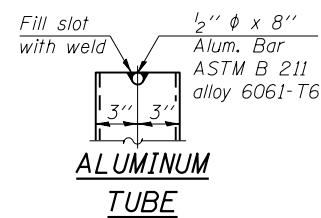


TOP PLAN

(Showing Aluminum Tube)



FIBERGLASS PIPE



ALUMINUM TUBE

FLOOR DRAIN DETAILS

Notes:

- Drains shall be located longitudinally as indicated on the Partial Plan Sidewalk, Sheet 9 of 23.
- Drains may be placed ±6" longitudinally of the locations shown to avoid transverse slab reinforcement.
- Longitudinal slab reinforcement at the drain locations may be shifted ±½ the specified bar spacing in order to place the floor drains.
- Bars shall not be omitted or cut at drain locations.
- Floor Drains need not be painted.
- Fiberglass pipe shall conform to ASTM D 2996, with short-time rupture strength hoop tensile stress of 30,000 p.s.i. minimum.

(Sheet 2 of 2)



USER NAME = FEI	DESIGNED - VPT	REVISED —
PLOT SCALE = 0.1667 "/> <td>CHECKED - JAF</td> <td>REVISED —</td>	CHECKED - JAF	REVISED —
PLOT DATE = 10/1/2014 3:14:08 PM	DRAWN - JAF	REVISED —
	CHECKED - VPT	REVISED —

**STATE OF ILLINOIS
DEPARTMENT OF TRANSPORTATION**

**SUPERSTRUCTURE DETAILS
STRUCTURE NO. 057-0256**

SHEET NO. 11 OF 23 SHEETS

F.A.P. RT.	SECTION	COUNTY	TOTAL SHEETS	SHEET NO.
730	62-ZBR	MCLEAN	65	38
CONTRACT NO. 70540				
ILLINOIS FED. AID PROJECT				