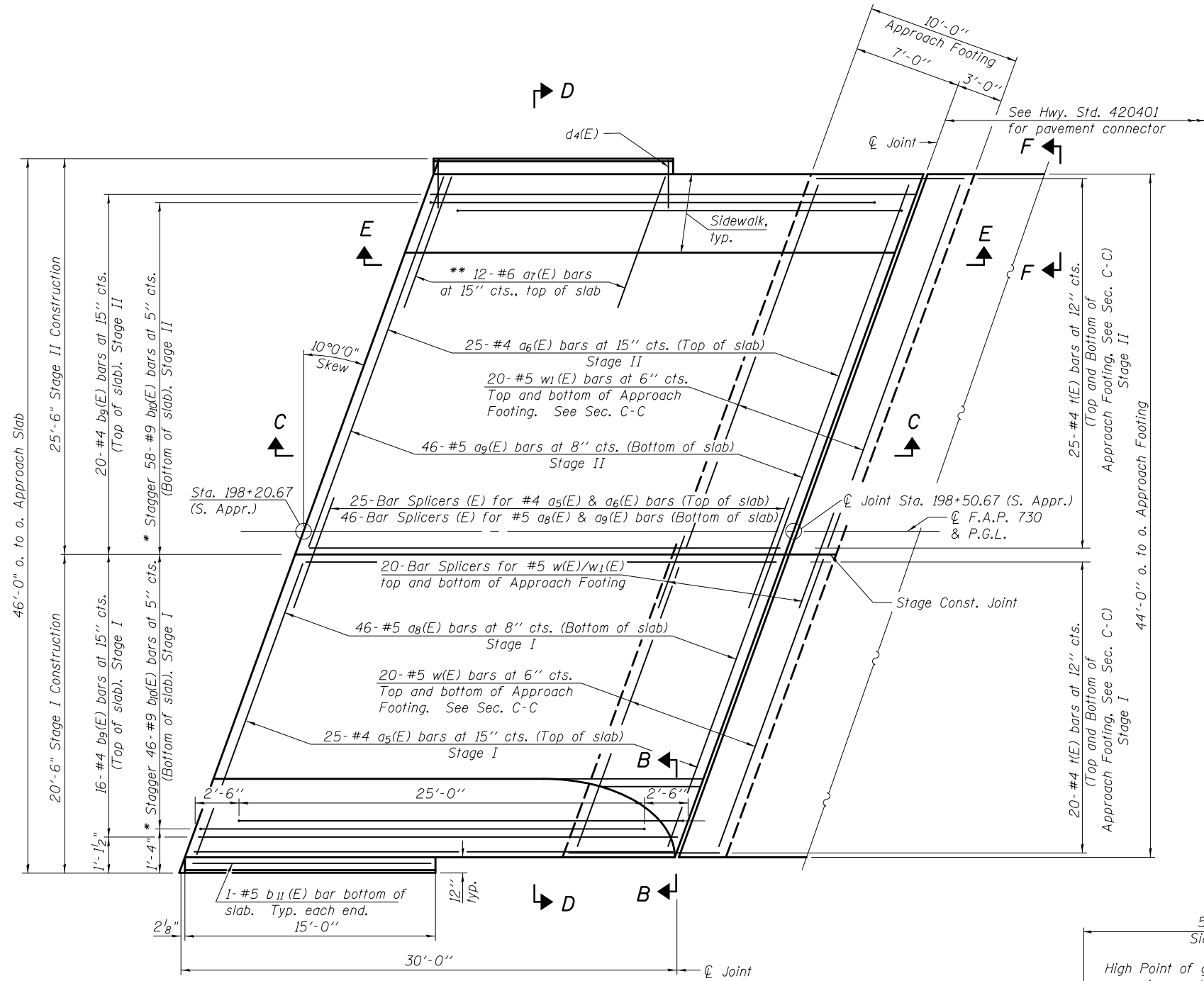
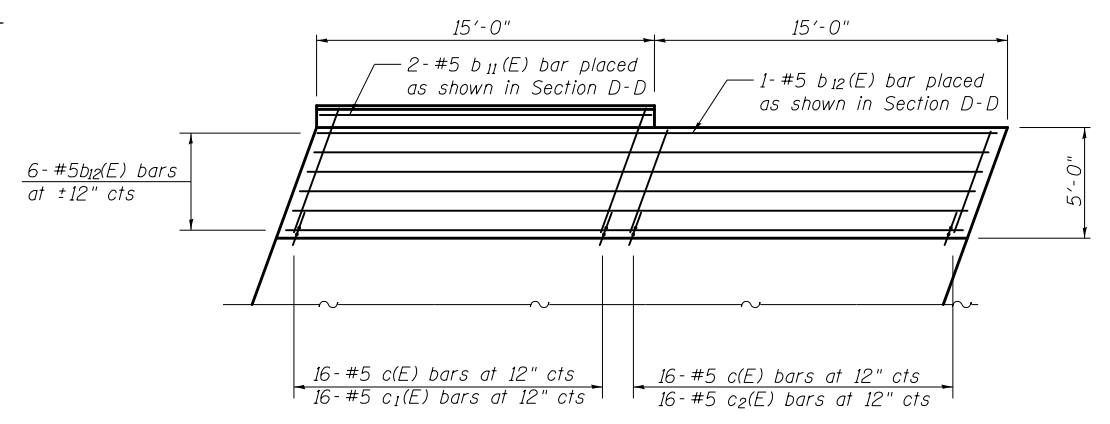


Notes:
See sheet 15 of 23 for Sections C-C & D-D and View E-E.
a₅(E) and a₆(E) bar spacings measured along \hat{C} Rdwy.

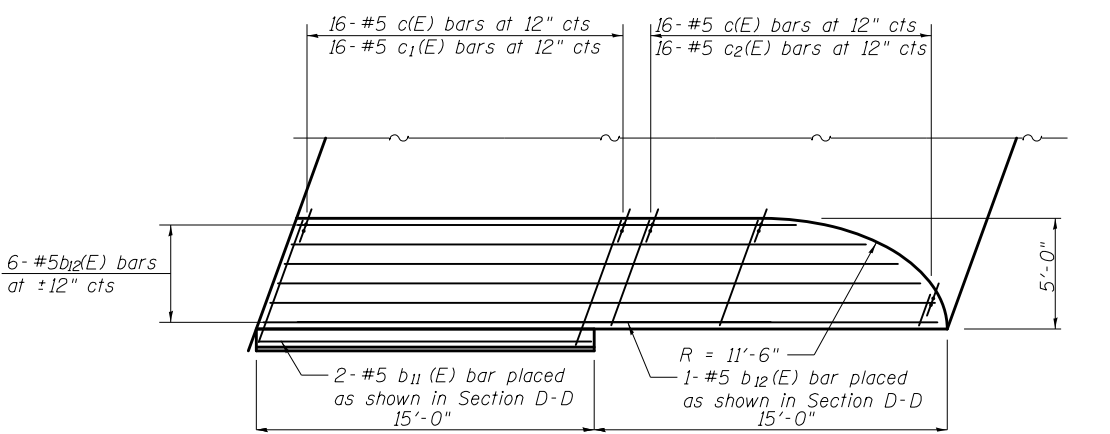


PLAN - SOUTH APPROACH

* Tilt #9 b₁₀(E) bars as required to maintain clearance.
** Space between a₅(E) or a₆(E) bars, typ. each parapet.

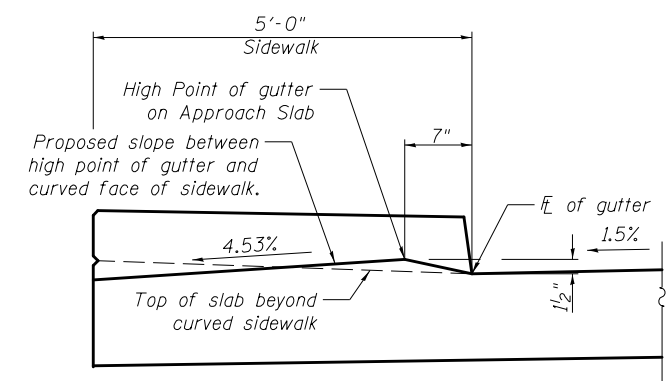


PLAN - SOUTH EAST SIDEWALK

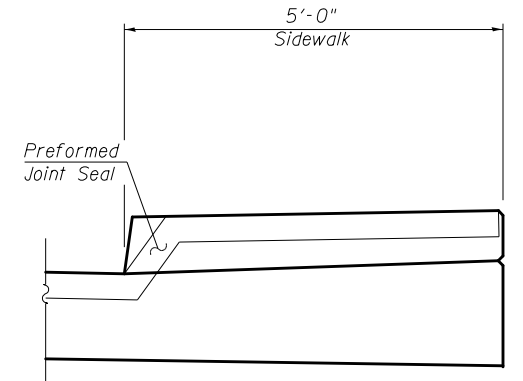


PLAN - SOUTH WEST SIDEWALK

#5 b₁₂(E) & #5 c₂(E) bars to be cut in field as required



VIEW B-B



VIEW F-F

Angle Preformed Joint Seal at 45° at curbs when req'd for drainage.

(Sheet 2 of 3)



USER NAME = ceerlockjd	DESIGNED - VPT	REVISED
	CHECKED - THW	REVISED
PLOT SCALE = 0.1667 ft / in.	DRAWN - THW	REVISED
PLOT DATE = 8/12/2014	CHECKED - VPT	REVISED

**STATE OF ILLINOIS
DEPARTMENT OF TRANSPORTATION**

**BRIDGE APPROACH SLAB DETAILS
STRUCTURE NO. 057-0256**

SHEET NO. 14 OF 23 SHEETS

F.A.P. RTE. 730	SECTION 62-ZBR	COUNTY MCLEAN	TOTAL SHEETS 65	SHEET NO. 41
CONTRACT NO. 70540				

ILLINOIS FED. AID PROJECT