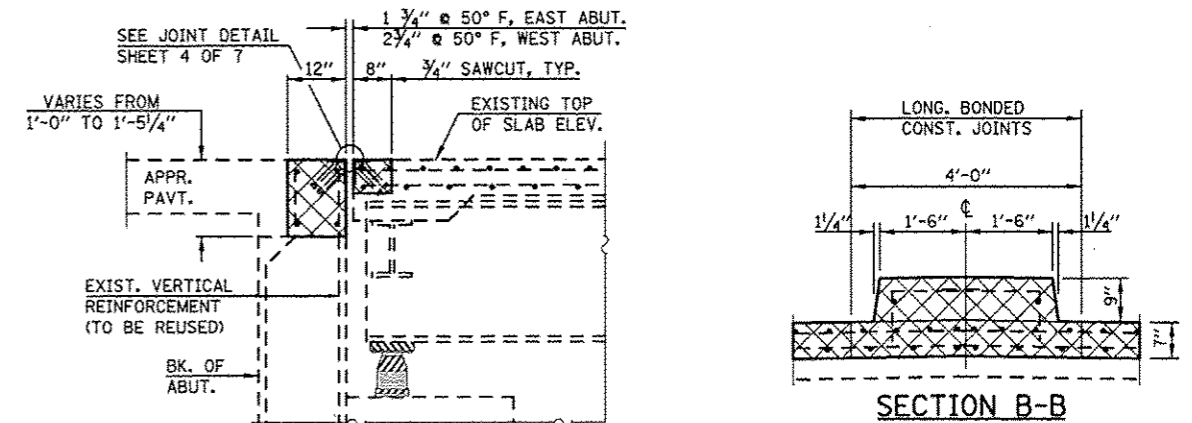
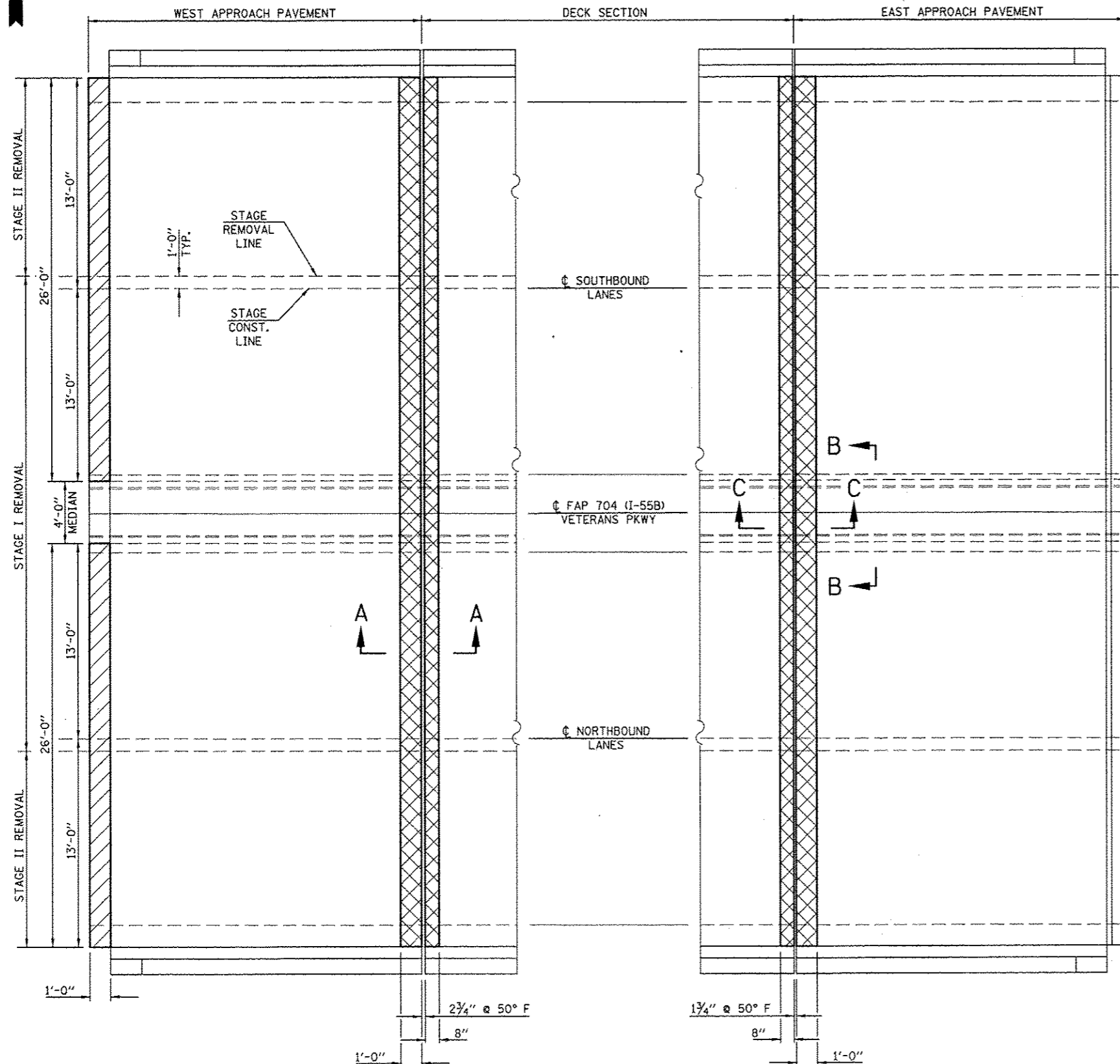
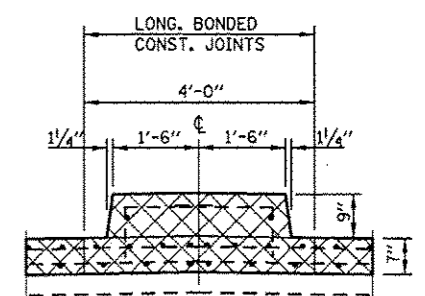


# CONCRETE REMOVAL PLAN

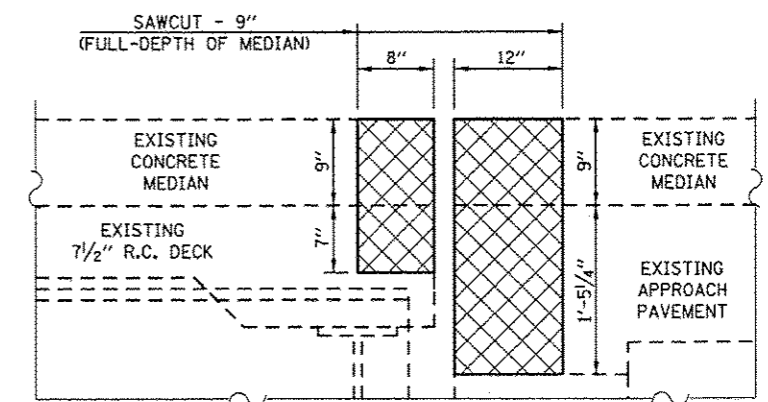
## S.N. 057-0063



**SECTION A-A**



**SECTION B-B**



**SECTION C-C**

**LEGEND**

- APPROACH SLAB REPAIR (PARTIAL-DEPTH)
- CONCRETE REMOVAL

**BILL OF MATERIALS**

ITEM	UNIT	TOTAL
APPROACH SLAB REPAIR (PARTIAL-DEPTH)	SQ YD	5.8
CONCRETE REMOVAL	CU YD	7.0

**NOTES**

EXISTING REINFORCEMENT BARS EXTENDING INTO THE REMOVAL AREA SHALL BE CLEANED, STRAIGHTENED AND INCORPORATED INTO THE NEW CONSTRUCTION. ANY REINFORCEMENT BARS THAT ARE DAMAGED DURING CONCRETE REMOVAL SHALL BE REPLACED WITH AN APPROVED BAR SPLICER OR ANCHORAGE SYSTEM. COST INCLUDED WITH CONCRETE REMOVAL.

THE LIMITS OF CONCRETE REMOVAL ON THE DECK SIDE OF THE JOINT ARE INTENDED TO PROVIDE FOR THE REMOVAL OF THE EXISTING STEEL ARMOR. THE ARMOR EXTENDS INTO THE PARAPET AND SHALL BE CUT OFF FLUSH WITH THE FACE OF THE PARAPET CURB AT THE EDGE OF THE REMOVAL LIMITS. COST INCLUDED WITH CONCRETE REMOVAL.

SEE SPECIAL PROVISION "DECK SLAB REPAIR" FOR APPROACH SLAB REPAIR (PARTIAL-DEPTH). FOR INTENT OF THIS WORK, "DECK" = "APPROACH".