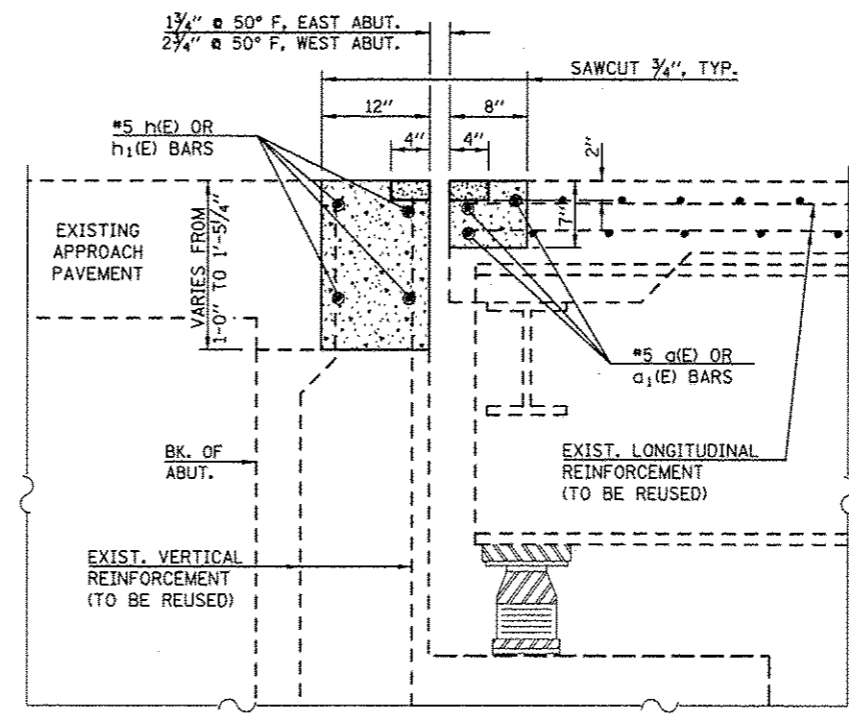
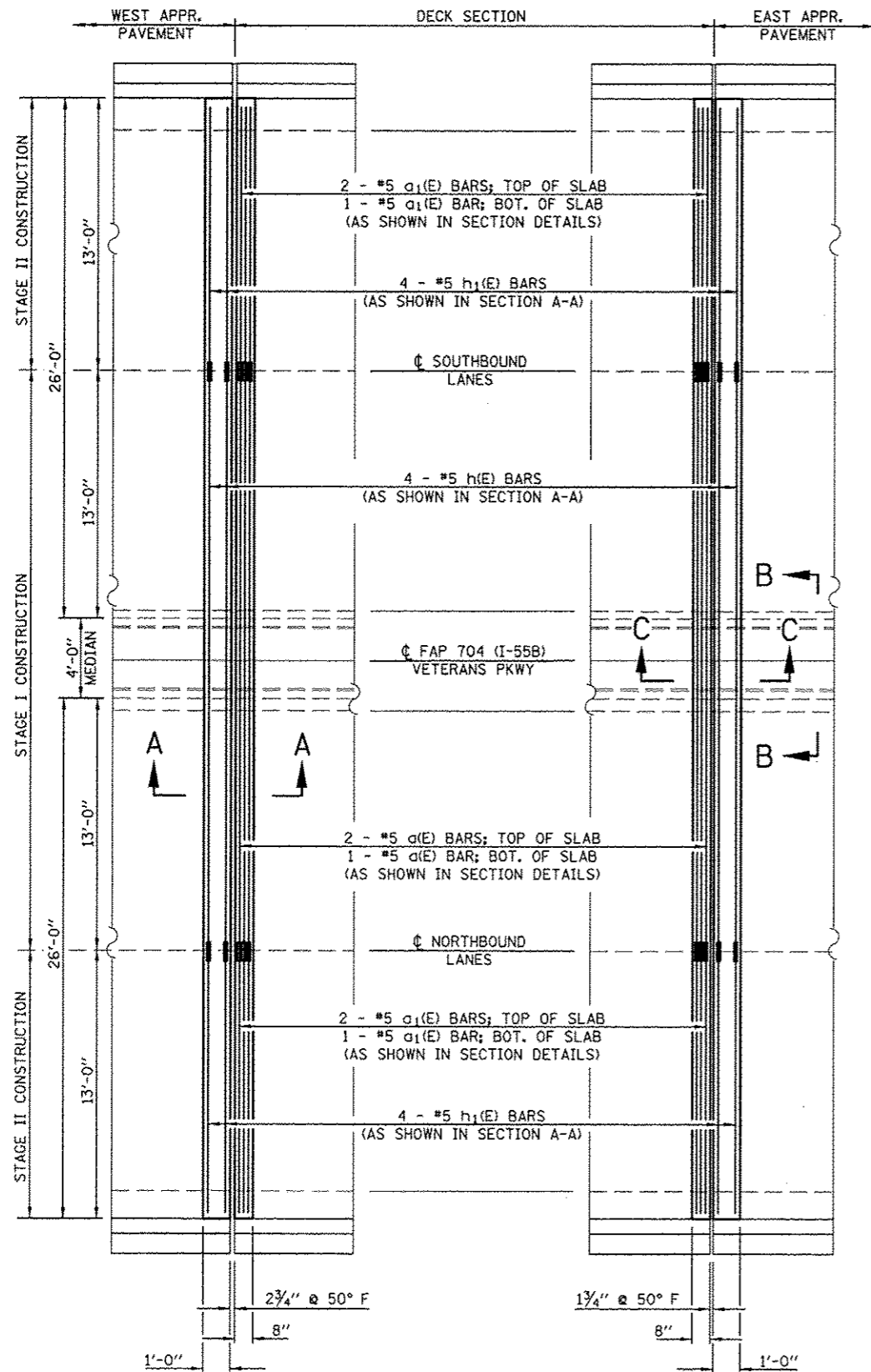


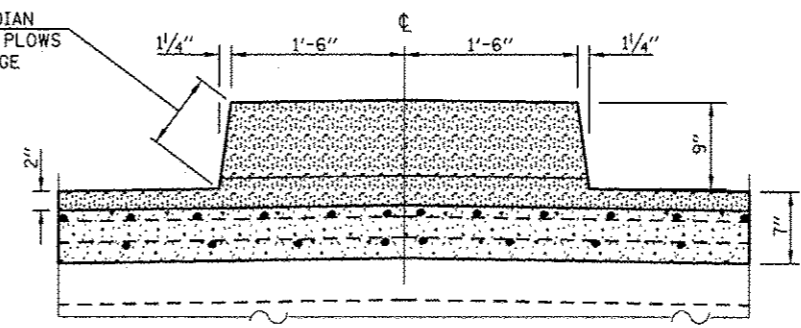
# SUPERSTRUCTURE REPAIR PLAN

## S.N. 057-0063

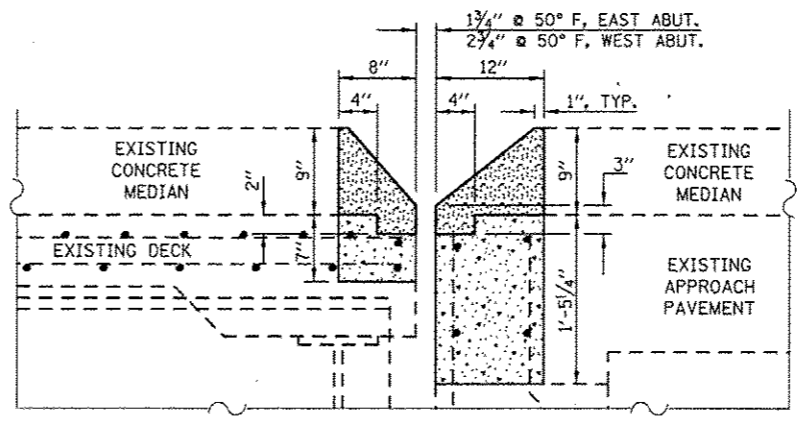


SECTION A-A

ROUND CORNERS AT MEDIAN  
END TO PREVENT SNOW PLOWS  
FROM SNAGGING THE EDGE



SECTION B-B



SECTION C-C

### BILL OF MATERIAL

BAR NO.	SIZE	LENGTH	SHAPE
a1(E) 6	#5	30'-0"	—
a1(E) 12	#5	12'-10"	—
h1(E) 8	#5	30'-0"	—
h1(E) 16	#5	12'-10"	—
CONCRETE SUPERSTRUCTURE			CU YD 6.2
POLYMER CONCRETE			CU FT 17.1
REINFORCEMENT BARS (EPOXY COATED)			POUND 820.0
BAR SPLICERS			EACH 28
PROTECTIVE COAT			SQ YD 17.5

### NOTES

EXISTING REINFORCEMENT BARS EXTENDING INTO THE REMOVAL AREA SHALL BE CLEANED, STRAIGHTENED AND INCORPORATED INTO THE NEW CONSTRUCTION. ANY REINFORCEMENT BARS THAT ARE DAMAGED DURING CONCRETE REMOVAL SHALL BE REPLACED WITH AN APPROVED BAR SPLICER OR ANCHORAGE SYSTEM. COST INCLUDED WITH CONCRETE REMOVAL.

REINFORCEMENT BARS DESIGNATED (E) SHALL BE EPOXY COATED.

EXCLUDING POLYMER CONCRETE, PROTECTIVE COAT SHALL BE APPLIED TO ALL NEW CONCRETE SURFACES PER ARTICLE 503.19 OF THE STD. SPECS.

### LEGEND

- POLYMER CONCRETE
- CONCRETE SUPERSTRUCTURES