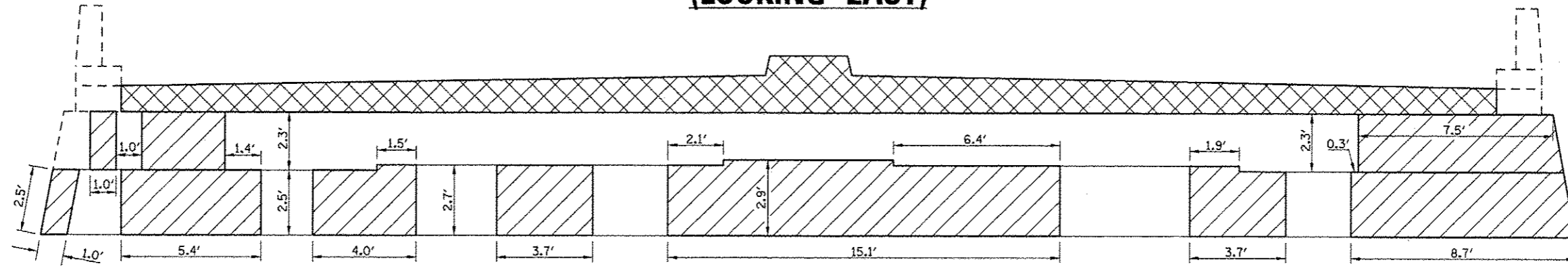
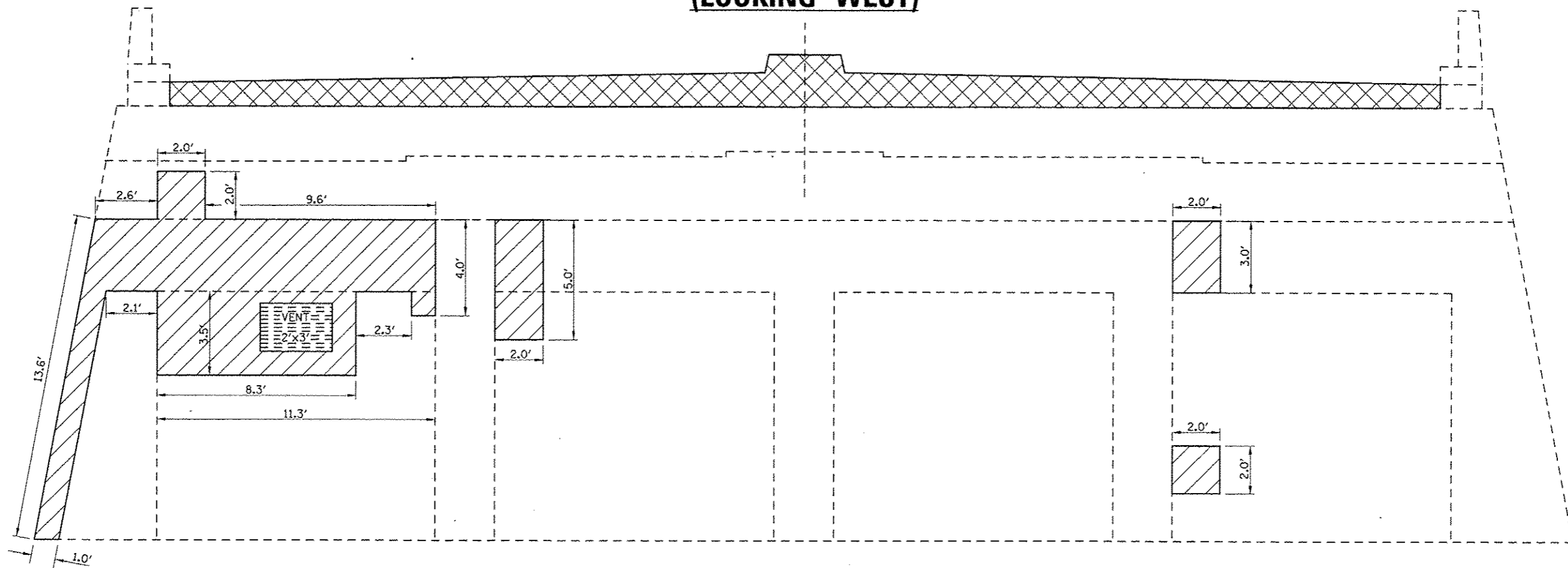


EAST ABUTMENT (LOOKING EAST)



WEST ABUTMENT (LOOKING WEST)



LEGEND

- STRUCTURAL REPAIR OF CONCRETE, DEPTH EQUAL TO OR LESS THAN 5"
- CONCRETE REMOVAL & CONCRETE STRUCTURES (SEE SHEET 2-3 OF 8 FOR DETAILS & QUANTITIES)

NOTE:

SEE SPECIAL PROVISION FOR STRUCTURAL REPAIR OF CONCRETE.

THE CONTRACTOR SHALL USE CARE TO AVOID DAMAGING THE EXISTING 2'x3' VENT IN THE WEST ABUTMENT WALL DURING THE REMOVAL FOR STRUCTURAL REPAIR OF CONCRETE. THE EXISTING FRAME AND VENT SHALL BE SALVAGED AND REUSED. COST INCLUDED WITH STRUCTURAL REPAIR OF CONCRETE (DEPTH LESS THAN OR EQUAL TO 5 INCHES).

BILL OF MATERIALS

ITEM	UNIT	TOTAL
STRUCTURAL REPAIR OF CONCRETE, DEPTH EQUAL TO OR LESS THAN 5"	SQ FT	238.3