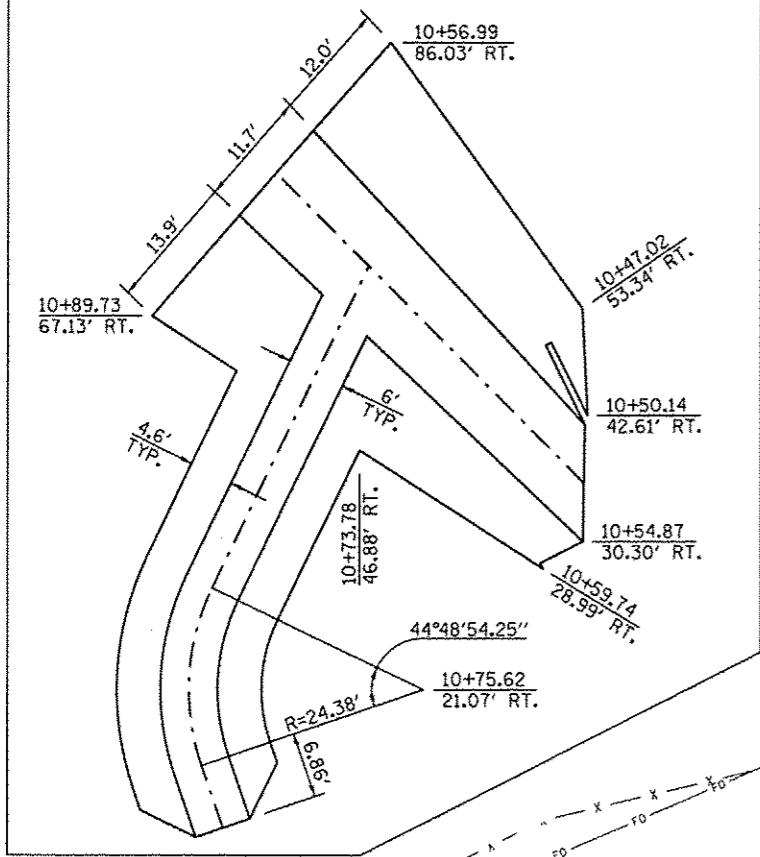


LAYOUT KEY FOR REPAIR AREA



B.M. 4920-8:
A CHISELED SQUARE IN THE CENTER OF THE TOP OF THE NORTH HEADWALL OF S.N. 057-8204, RAMP STATION 11+00.00, 13.59' RT., ELEVATION 808.85.

LIST OF QUANTITIES

ITEM	UNIT	TOTAL
TREE REMOVAL (OVER 15 UNITS Ø)	UNIT	25.0
STONE RIPRAP, CLASS A4	SQ YD	235.0
FILTER FABRIC	SQ YD	235.0

LEGEND

STONE RIPRAP, CLASS A4 (16" + 6" OF BEDDING STONE AND FILTER FABRIC)

NOTES

SEE NEXT SHEET FOR PROPOSED RIPRAP STREAM CROSS SECTIONS.

☐ PROPOSED STREAMBED
S.N. 057-8199 DOWNSTREAM
NW RAMP STA. 10+72.61
77.02' RT., ELEV. 802.94'

☐ PROPOSED STREAMBED
S.N. 057-8204 DOWNSTREAM
NW RAMP STA. 10+70.62
60.82' RT., ELEV. 803.15'

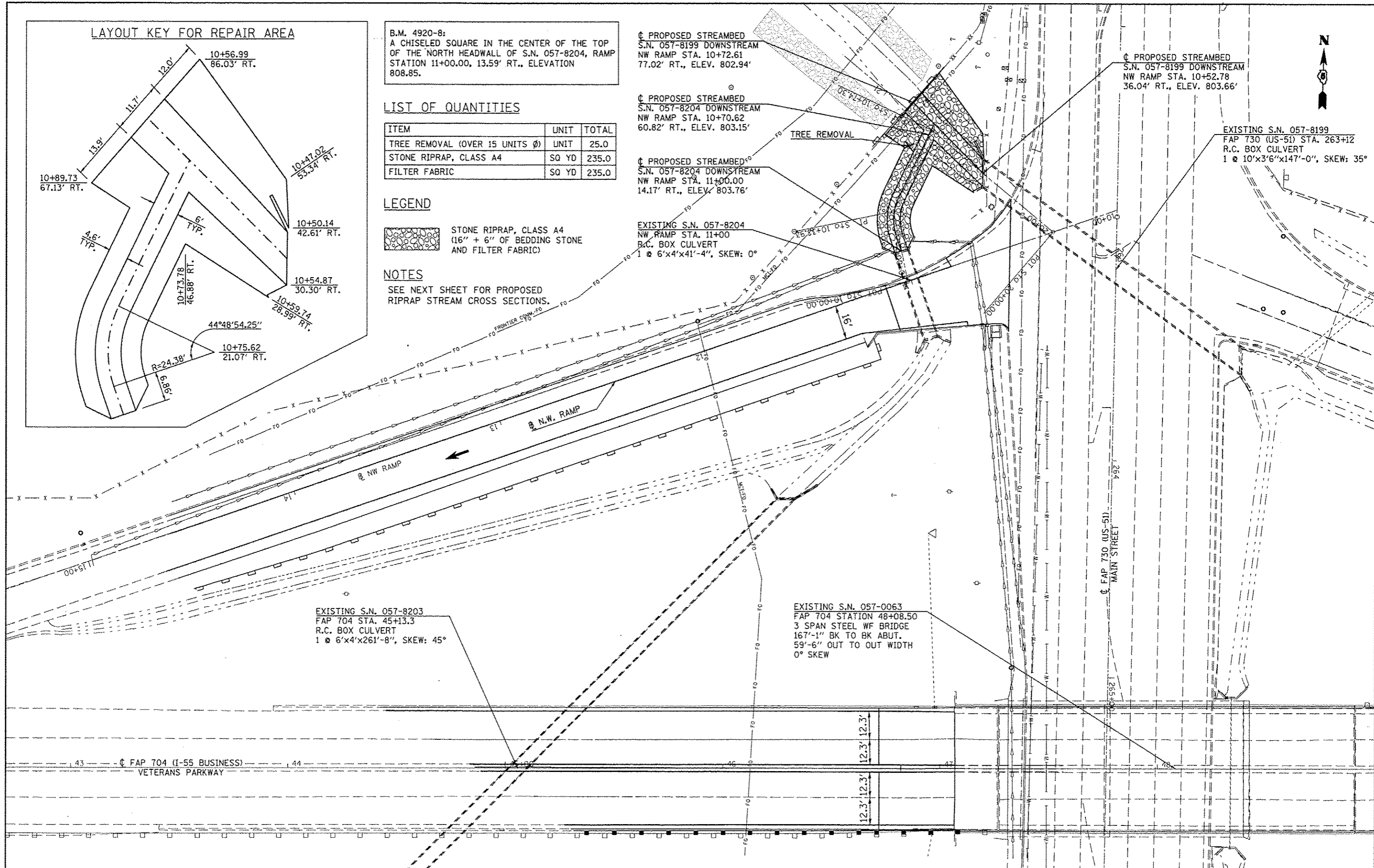
☐ PROPOSED STREAMBED
S.N. 057-8204 DOWNSTREAM
NW RAMP STA. 11+00.00
14.17' RT., ELEV. 803.76'

EXISTING S.N. 057-8204
NW RAMP STA. 11+00
R.C. BOX CULVERT
1 @ 6'x4'x41'-4", SKEW: 0°

☐ PROPOSED STREAMBED
S.N. 057-8199 DOWNSTREAM
NW RAMP STA. 10+52.78
36.04' RT., ELEV. 803.66'

EXISTING S.N. 057-8199
FAP 730 (US-51) STA. 263+12
R.C. BOX CULVERT
1 @ 10'x3'6"x147'-0", SKEW: 35°

TREE REMOVAL



EXISTING S.N. 057-8203
FAP 704 STA. 45+13.3
R.C. BOX CULVERT
1 @ 6'x4'x261'-8", SKEW: 45°

EXISTING S.N. 057-0063
FAP 704 STATION 48+08.50
3 SPAN STEEL WF BRIDGE
167'-1" BK TO BK ABUT.
59'-6" OUT TO OUT WIDTH
0° SKEW

☐ FAP 704 (I-55 BUSINESS)
VETERANS PARKWAY

FILE NAME c:\pwwork\pwwork\dodgema\d0267571\0578199-330-shr-Hyd.dgn	USER NAME dodgema	DESIGNED GMS	REVISOR -	STATE OF ILLINOIS DEPARTMENT OF TRANSPORTATION	SCOUR MITIGATION PLAN S.N. 057-8199 & 057-8204		F.A.P. RTE. 704	SECTION (57-7RS-1 & 1RS-3)	COUNTY McLean	TOTAL SHEETS 273	SHEET NO. 124
PLOT SCALE 48.0000 1" = 48.0000'	CHECKED BJM	REVISOR -	CONTRACT NO. 70838								
PLOT DATE 6/11/2014	DATE 10-29-12	REVISOR -	ILLINOIS FED. AID PROJECT								
SCALE:	SHEET	OF	SHEETS				STA.	TO	STA.		