

STATE OF ILLINOIS
DEPARTMENT OF TRANSPORTATION
DIVISION OF HIGHWAYS

PROPOSED
HIGHWAY PLANS

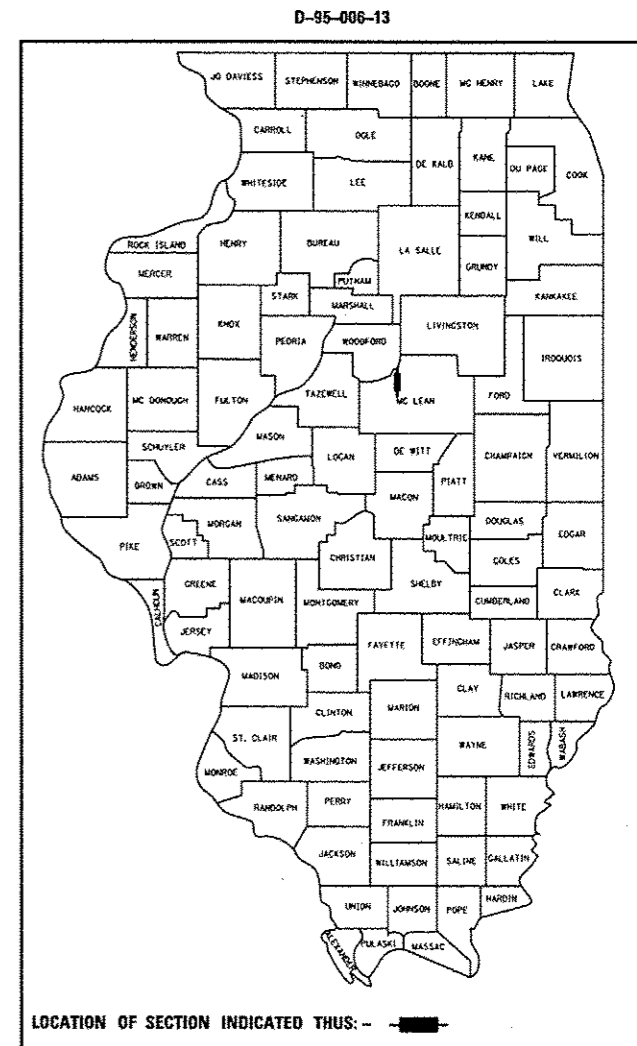
F.A.I. ROUTE 39 (I-39)
SECTION (57-3,57-4)RS
PROJECT ACNHPP-0039 (038)
RESURFACING (INT-1ST)
MCLEAN COUNTY

F.A.I. RTE.	SECTION	COUNTY	TOTAL SHEETS	SHEET NO.
39	(57-3,57-4)RS	MCLEAN	90	1
		ILLINOIS	CONTRACT NO. 70A20	

FOR INDEX OF SHEETS, SEE SHEET NO. 2
 FOR SUMMARY OF QUANTITIES, SEE SHEET NO. 7 THROUGH 11

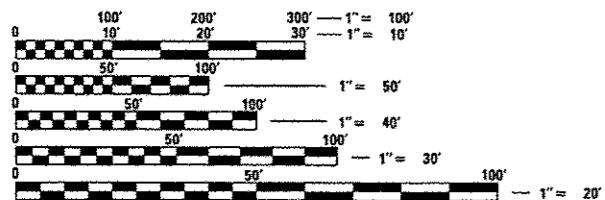
CURRENT TRAFFIC DATA			
	LEG "A"	LEG "B"	LEG "C"
2013 ADT	18,500	18,600	16,200
P.U. %	66.0	69.0	64.6
S.U. %	5.9	5.1	4.7
M.U. %	28.1	25.9	30.7

LEG "A" IS FROM SIX MILE CREEK TO FAS 472.
 LEG "B" IS FROM FAS 472 TO IL 251.
 LEG "C" IS FROM IL 251 TO WOODFORD COUNTY LINE.



C-95-006-13
SIX MILE CREEK SW OF HUDSON TO WOODFORD COUNTY LINE

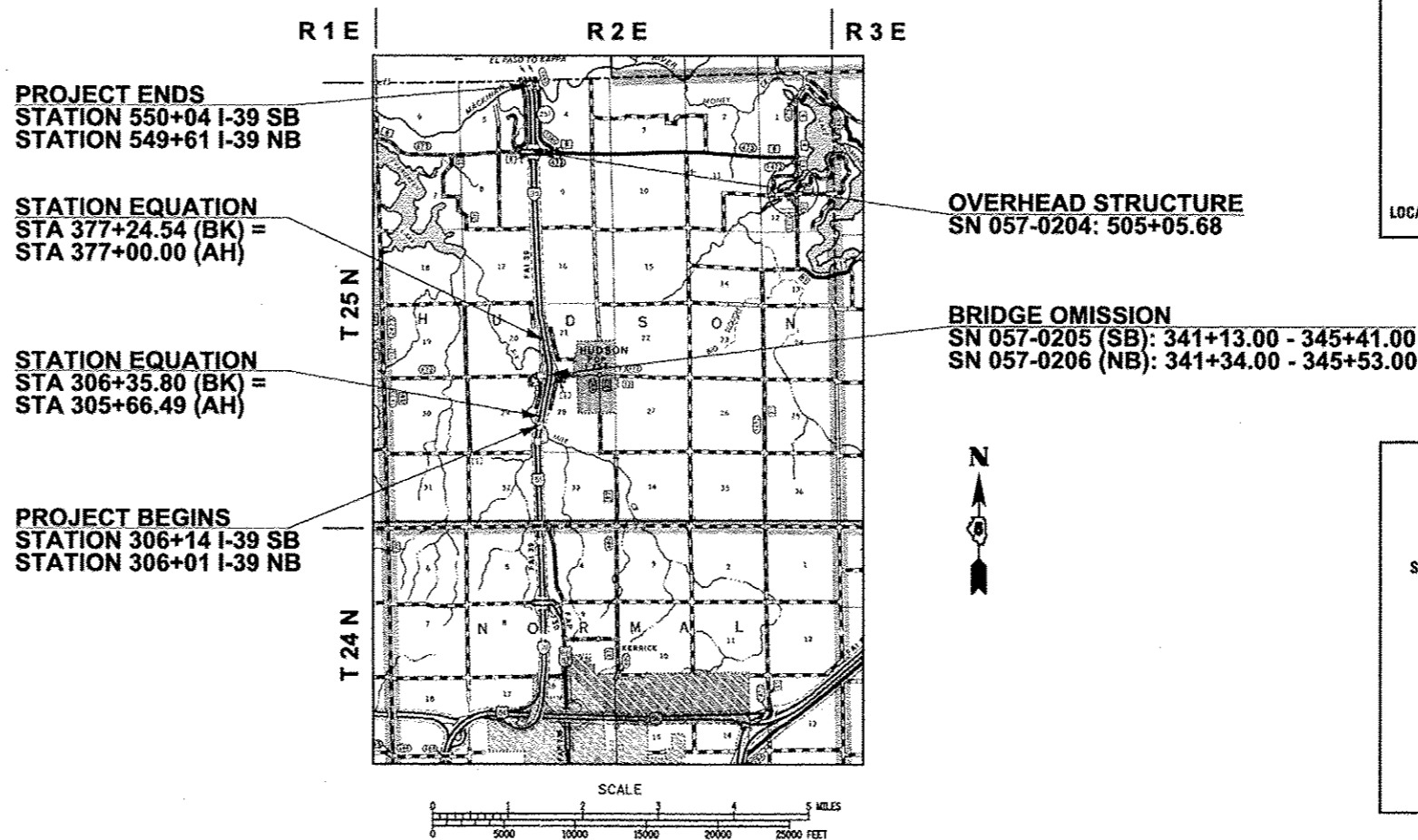
DESIGN DESIGNATION
 N/A



FULL SIZE PLANS HAVE BEEN PREPARED USING STANDARD ENGINEERING SCALES. REDUCED SIZED PLANS WILL NOT CONFORM TO STANDARD SCALES. IN MAKING MEASUREMENTS ON REDUCED PLANS, THE ABOVE SCALES MAY BE USED.

J.U.L.I.E.
 JOINT UTILITY LOCATION INFORMATION FOR EXCAVATION
 1-800-892-0123 (HUDSON TOWNSHIP)
 OR 811

PROJECT ENGINEER: NANCY FASIG
SQUAD LEADER: BRIAN J. HOGAN
DESIGNER: ANDREW BERGAN
 (217) 465-4181
CONTRACT NO. 70A20



STATE OF ILLINOIS
 DEPARTMENT OF TRANSPORTATION
 DIVISION OF HIGHWAYS

SUBMITTED AUGUST 7 2014
Kenneth A. Garnett
 DEPUTY DIRECTOR OF HIGHWAYS, REGION ENGINEER
Oct 17 2014
John D. Baranicki PE
 ENGINEER OF DESIGN AND ENVIRONMENT
Oct 17 2014
Emer Osman PE
 DIRECTOR OF HIGHWAYS, CHIEF ENGINEER

PRINTED BY THE AUTHORITY
OF THE STATE OF ILLINOIS

GROSS LENGTH = 24,453.85 FEET = 4.631 MILES
 NET LENGTH = 24,034.85 FEET = 4.552 MILES